

Mid North Coast BFMCC Bush Fire Risk Management Plan 2017

South Coffs Harbour - Map Display Area

Map 7 of 9

DRAFT

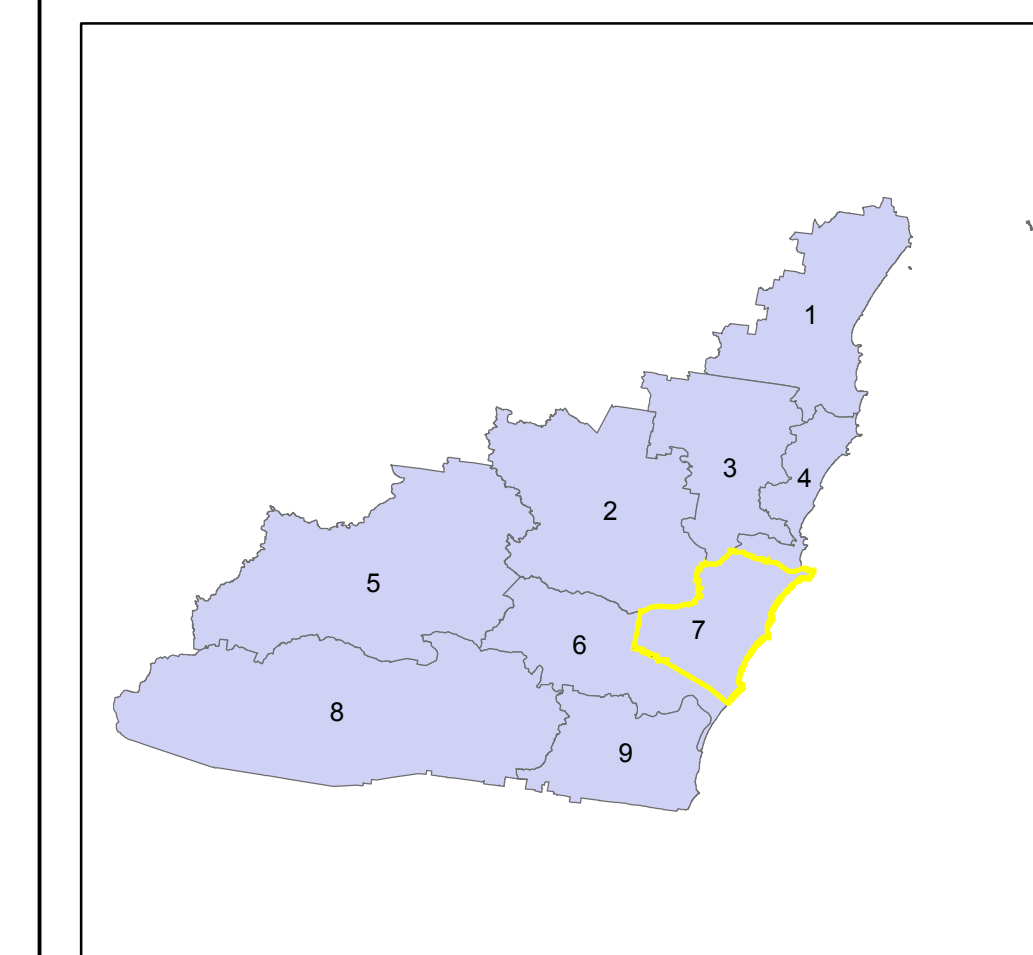
This Bush Fire Risk Management Plan (BFRMP) has been prepared by the Mid North Coast Bush Fire Management Committee (BFMC) pursuant to section 52 of the *Rural Fires Act 1997*.

The aim of this BFRMP is to reduce the adverse impact of bush fires on life, property and the environment.

The objectives of this BFRMP are to:

- reduce the number of human-induced bush fire ignitions that cause damage to life, property or the environment;
- manage fuel to reduce the spread and intensity of bush fires while minimising environmental/ecological impacts;
- reduce the community's vulnerability to bush fires by improving its preparedness; and
- effectively contain fires with a potential to cause damage to life, property and the environment.

This map forms part of the BFRMP for the Mid North Coast BFMC, covering the local government areas of Bellingen and Coffs Harbour. It should be viewed in conjunction with the accompanying BFRMP document which provides further details on the BFMC area, the assets assessed and the risk assessment process used.



Review
Under the *Rural Fires Act 1997* this plan must be reviewed and updated within each successive five year period following the constitution of the BFMC. The Mid North Coast BFMC will also review this plan as necessary. This may be triggered by a range of circumstances, including but not limited to:

- changes to the BFMC area, organisational responsibilities or legislation;
- changes to the bush fire risk in the area; or
- following a major fire event.

Assets
This BFRMP identifies the assets that are considered by the Mid North Coast BFMC and community to be at risk from bush fires, assesses the bush fire risk to each asset and assigns treatments designed to mitigate the risk. Assets in the BFMC area identified as requiring treatments are listed in the assets table. Other assets within the BFMC area that were assessed as not requiring treatments within the life of this plan are listed in the appendix to the BFRMP document. The Map Ref number "NA" denotes non-spatial assets.

Treatments
Specific treatments assigned to assets in the Mid North Coast area are listed in the treatments table and linked to the assets which they are designed to protect. Standard BFMC wide treatments (i.e. not linked to a specific asset) which occur on an ongoing basis within the BFMC area are:

- reviewing the bush fire prone land map;
- ensuring developments in the bush fire prone land comply with Planning for Bush Fire Protection;
- using the Local Environment Plan's (LEPs) to control development in areas with a bush fire risk;
- varying the standard bush fire danger period as required;
- requiring permits during bush fire danger periods;
- prosecution of arsonists/offenders;
- investigation of bush fire cause;
- normal fire suppression activities;
- assessing and managing compliance with strategic fire-fighting resource allocation management systems;
- preparation of a S&S Operations Coordination Plan;

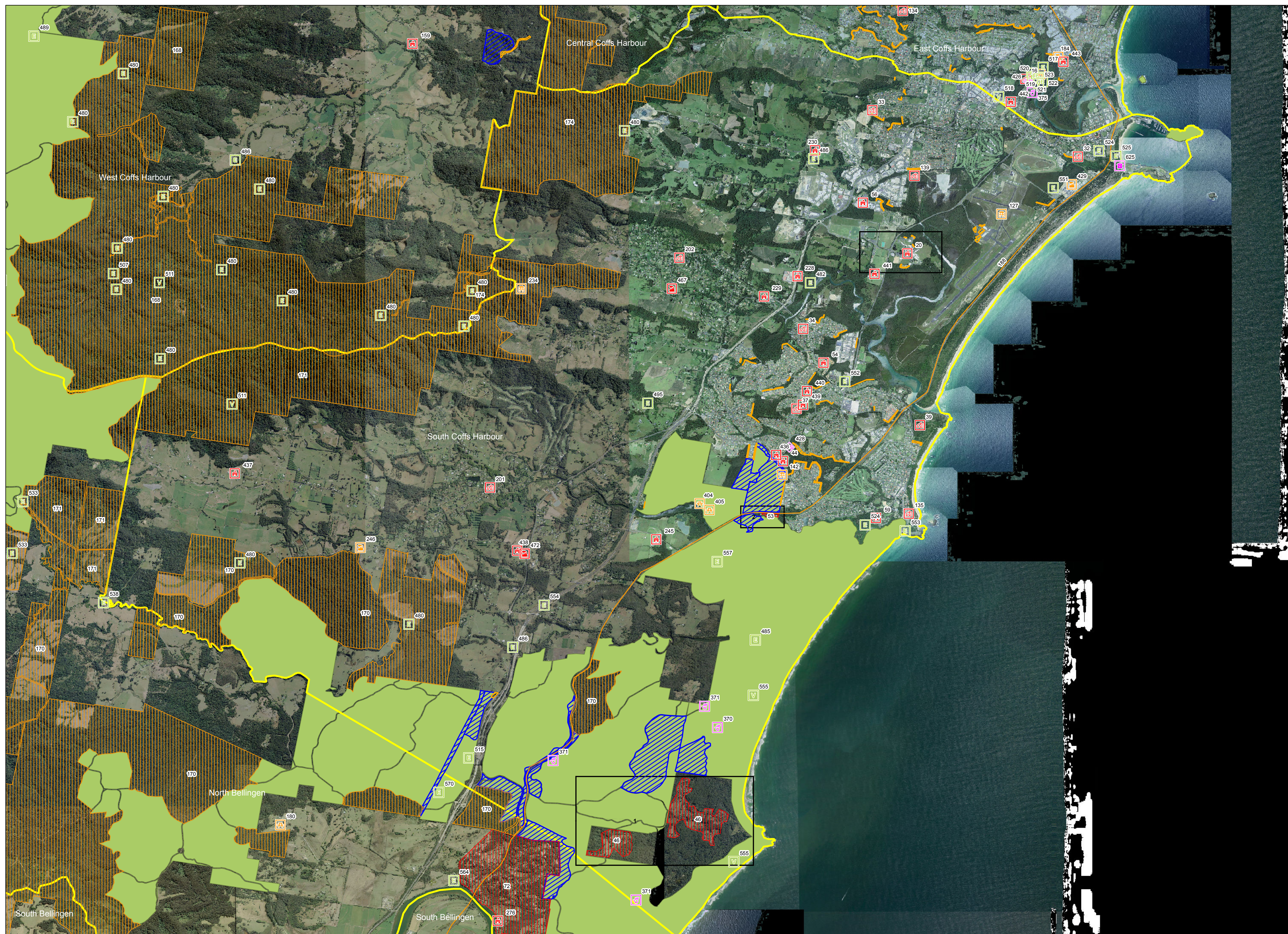
Note on LMZ: All areas not specifically mapped as an APZ, SFAZ or FEZ are considered as LMZ for this risk management plan. For areas identified by an LMZ polygon on the map, please refer to the BFRMP document for the specific land management objectives.

Zone	Purpose	Suppression	Zone
Asset Protection Zone	To protect human life, property and highly valued public assets and values.	To enable the safe use of Direct Attack suppression strategies within the zone. To minimise bush fire impacts on undefended assets.	As per RFS document <i>Standards for Asset Protection Zones</i> .
Strategic Fire Advantage Zone	To provide strategic areas of fire protection advantage which will reduce the speed and intensity of bush fires, and reduce the potential for spot fire development. To aid containment of wildfires to existing management boundaries.	To improve the likelihood and safe use of Parallel Attack suppression strategies within the zone, and/or Indirect Attack (back burning) in high to very high fire weather conditions within the zone. To reduce the likelihood of Crown fire development within the zone, and/or Spot fire ignition potential from the zone. Management practices should aim to achieve mosaic fuel reduction patterns so that the majority of the SFAZ has an OFH of less than high.	Zone width related to suppression objectives and dependant upon: - Topography - Aspect - Location of adjacent fire breaks - Mosaic pattern of treatment Assess Overall Fuel Hazard (OFH) once vegetation communities reach minimum fire thresholds within this plan. Management practices should aim to achieve mosaic fuel reduction patterns so that the majority of the SFAZ has an OFH of less than high.
Land Management Zone	To meet relevant land management objectives in area where APZs or SFAZs are not appropriate.	As per the land management and fire protection objectives of the responsible land management agency. To reduce the likelihood of spread of fires. To undertake mosaic burning.	As appropriate to achieve land management, e.g. heritage and/or fire protection e.g. broad scale mosaic burning objectives.
Fire Exclusion Zone	To exclude bush fires.	NA	Variable dependant on size of fire sensitive area requiring protection.

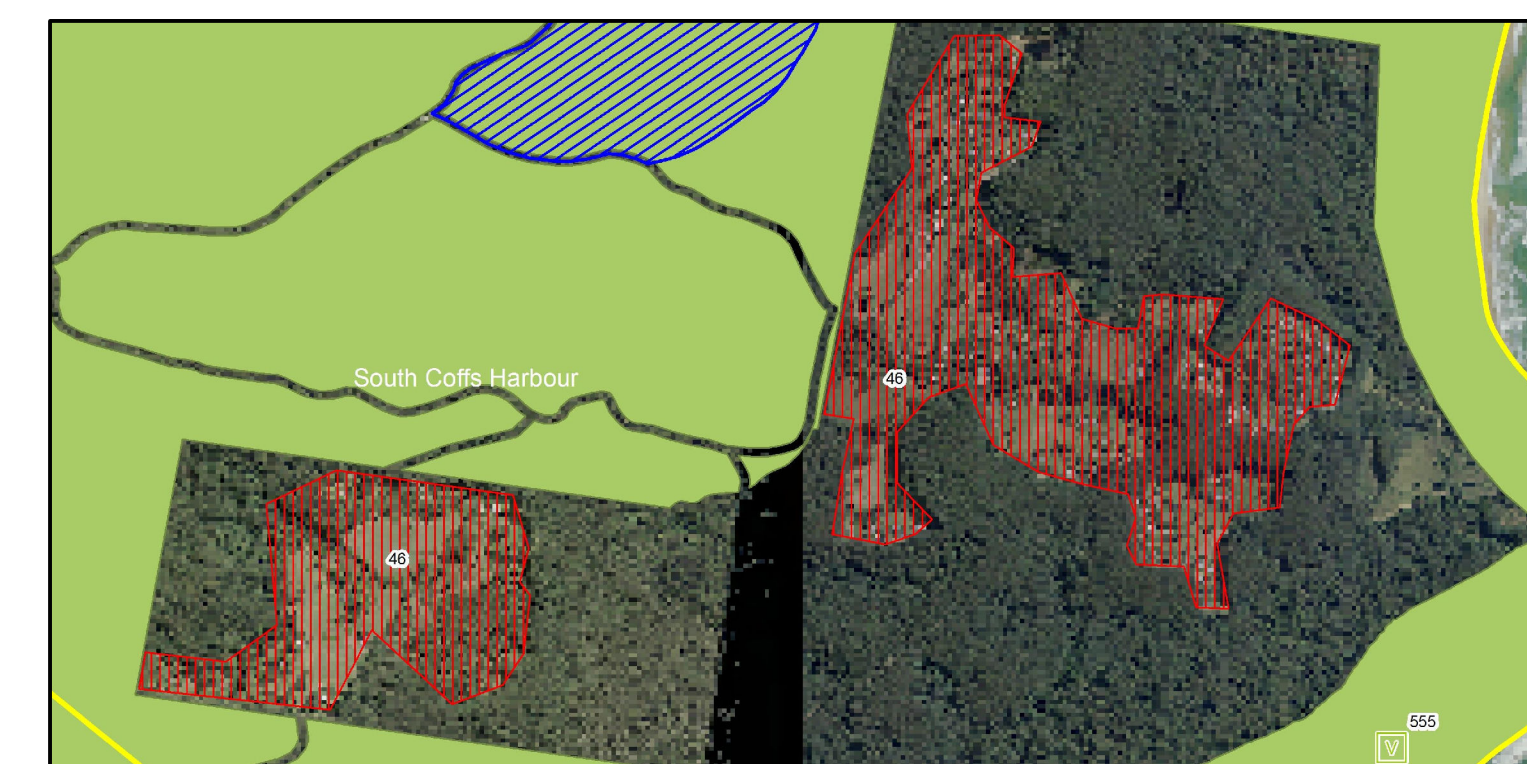
Disclaimer
The Mid North Coast BFMC makes every effort to ensure the quality of the information available on this map. Before relying on the information on this map, users should carefully evaluate its accuracy, currency or completeness of the information. Copyright: Mid North Coast BFMC 2017.

The Mid North Coast BFMC can not guarantee and assumes no legal liability or responsibility for the accuracy, currency or completeness of the information. Copyright: Mid North Coast BFMC 2017.
Authorized by _____ of Mid North Coast BFMC.
Date created: Friday, 2 June 2017

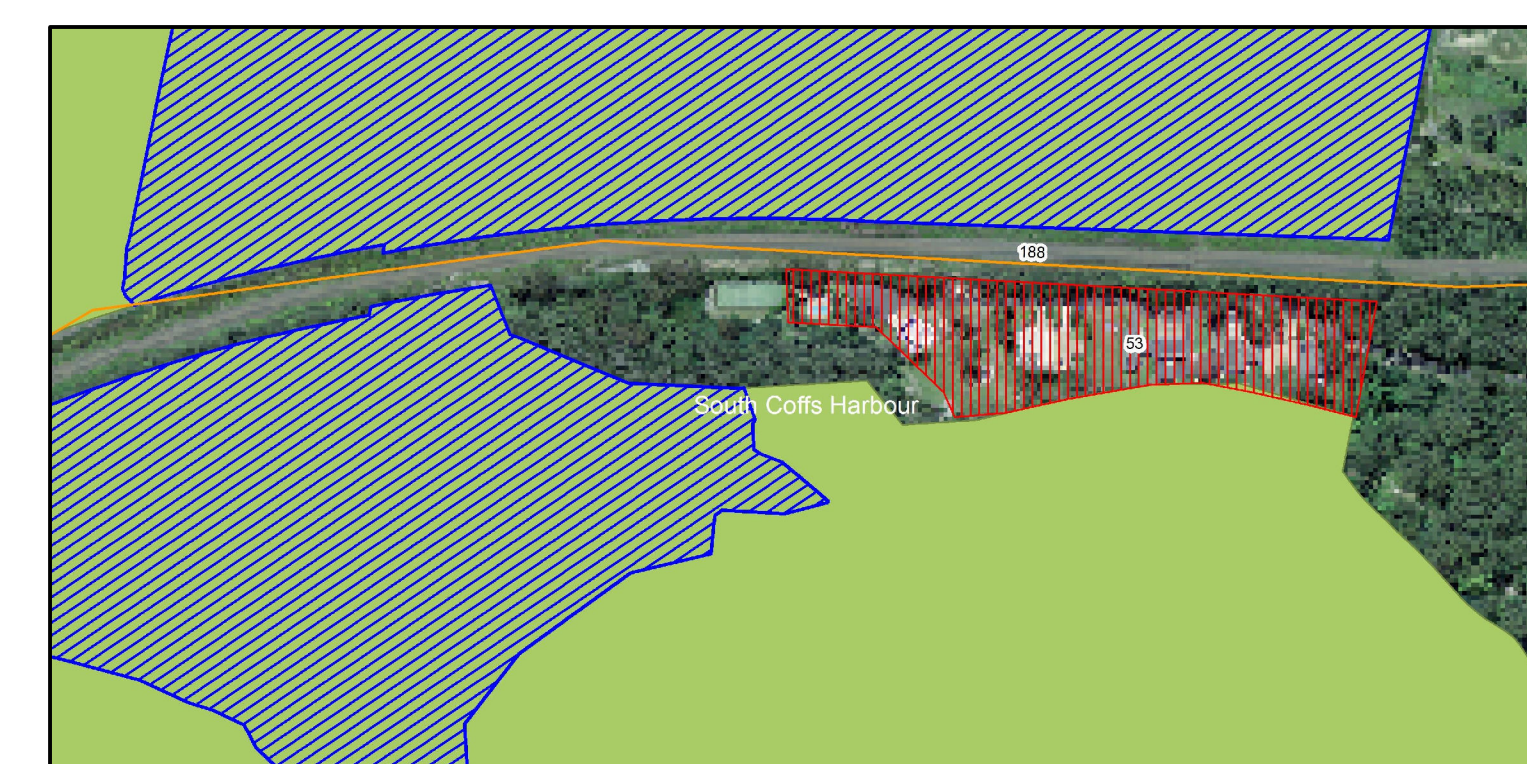
BFRMP version 2.1.26.0



Map Ref	Asset name	Asset type	Subtype	Risk level	Priority	Treatment
46	Bundagen MG	Human	Residential	Extreme	1B	T5;8;21;48
NA	Isolated Dwellings Coffs Harbour LGA	Human	Residential	Very High	2A	T9;11;34;37
20	Coffs Harbour Education Campus	Human	Special Fire	Very High	2A	T31
53	Moller Drive	Human	Residential	Very High	2A	T5;8;28
170	Pine Creek State Forest	Economic	Commercial	Very High	2A	T55
174	Boambee State Forest	Economic	Commercial	Very High	2A	T16
467	NSP - Ayrshire Park Reserve	Human	Other	Low	NA	T3
472	NSP - Bonville Hall	Human	Other	Low	NA	T3



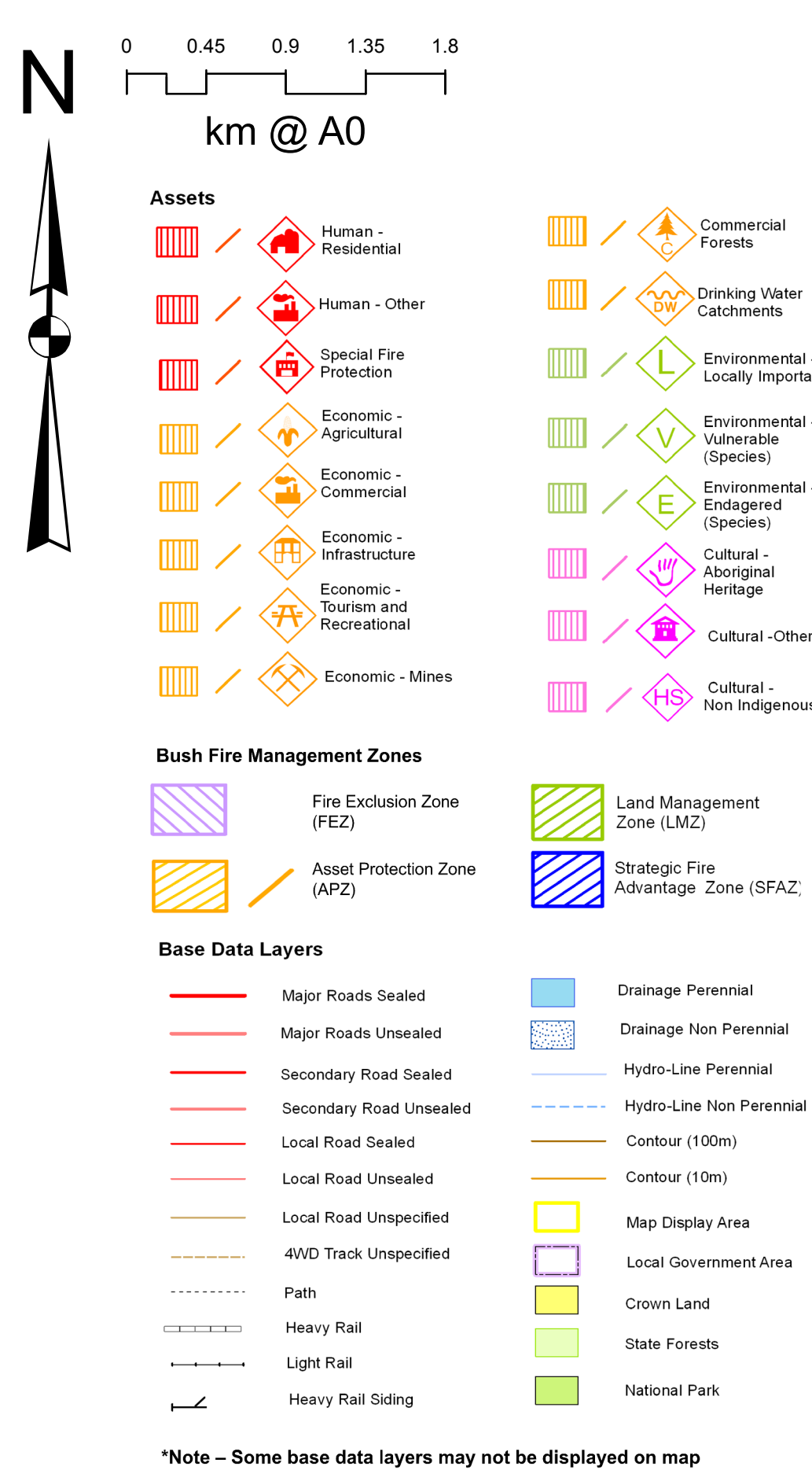
Inset map 1. Bundagen



Inset map 2. Moller Drive



Inset map 3. Coffs Harbour Education Campus



ID	Treatment strategy	Action	Agencies (Support)
T5	Hazard Reduction	Inspect SFZ and maintain as required	OEH
T8	Preparedness	Inspect and maintain fire trails as per BFMCC FTR	OEH
T9	Hazard Reduction	Inspect APZ and maintain annually	LGA
T16	Preparedness	Inspect and maintain fire trails as per BFMCC FTR	FCNSW
T21	Preparedness	Conduct Community Fire Unit training	RFS
T31	Hazard Reduction	Inspect APZ and maintain annually	RFS
T34	Hazard Reduction	Inspect SFZ and maintain as required	LGA, RFS
T48	Property Planning	Implement Community Protection Plan	BFMC
T11	Community Education	Publish media releases during the fire season	RFS
T28	Community Education	Conduct street meeting	FRNSW
T37	Preparedness	Inspect and maintain fire trails as per BFMCC FTR	TI, CL, LGA, OEH, FCNSW
T55	Preparedness	Inspect and maintain fire trails as per BFMCC FTR	OEH, FCNSW
T3	Hazard Reduction	Maintain fuels in accordance with Guidelines	LGA (RFS)

*Note - Some base data layers may not be displayed on map