

The Hills Bush Fire Management Committee

Bush Fire Risk Management Plan



Table of Contents

Glossary	5
Chapter 1. Introduction	7
1.1 Background	7
1.2 Aim and Objectives	7
1.3 Description of The Hills BFMC Area	8
1.3.1 Location and land tenure	8
1.3.2 Climate and bush fire season	8
1.3.3 Population and demographic information	8
1.3.4 History of bush fire frequency and ignition cause	9
Chapter 2. Identifying and Assessing the Bush Fire Risk	10
2.1 Process	10
2.2 Communication and Consultation	10
2.3 Identifying the Bush Fire Risk	11
2.3.1 Assets	11
2.3.2 Assessing the Bush Fire Risk - Consequence	12
2.3.3 Assessing the Bush Fire Risk - Likelihood	13
2.3.4 Identifying the level of risk	13
2.3.5 Evaluating the Bush Fire Risk	13
2.3.6 Prioritising Treatments	13
2.3.7 Risk Acceptability	14
Chapter 3. Treating the Risk	15
3.1 Bush Fire Management Zones	15
3.2 BFMC Wide Treatments	17
3.3 Asset Specific Treatments	18
3.4 Fire Thresholds	19
3.5 Annual Works Programs	20
3.6 Implementation	21
Chapter 4. Performance Monitoring and Reviewing	22
4.1 Review	22
4.2 Monitoring	22
4.3 Reporting	22
4.4 Performance Measurements	22
Appendix 1 Community Participation Strategy	23
Appendix 2 Asset Register	24
Appendix 3 Treatment Register	25
Appendix 4 Maps 1 - 4	26

List of Tables

Table 1.1 Land Tenure	8
Table 3.1 Bush Fire Management Zones: Purpose, objectives and characteristics	16
Table 3.2 Asset specific treatments used in The Hills BFMC area	19
Table 3.3 Fire Thresholds for Vegetation Categories	20

List of Figures

Figure 2.1 Overview of the risk assessment process.....	10
---	----

Authorisation

In accordance with Part 3 Division 4 of the Rural Fires Act 1997, this Plan has been prepared by The Hills Bush Fire Management Committee and has been endorsed at the BFMC meeting on 04/04/2019 for submission to the Bush Fire Coordinating Committee.

Recommended

 9/8/19

Clr Robyn Preston
Chairperson
The Hills Bush Fire Management Committee

Approved



On behalf of the
NSW Bush Fire Coordinating Committee

Amendment List

Amendment		Entered	
Number	Date	Signature	Date

Glossary

Assets: anything valued by the community which includes houses, crops, heritage buildings and places, infrastructure, the environment, businesses, and forests, that may be at risk from bush fire.

Bush Fire: a general term used to describe fire in vegetation, includes grass fire.

Bush Fire Hazard: the potential severity of a bush fire, which is determined by fuel load, fuel arrangement and topography under a given climatic condition.

Bush Fire Risk: the chance of a bush fire igniting, spreading and causing damage to the community or the assets they value.

Bush Fire Risk Management: a systematic process that provides a range of treatments which contribute to the well being of communities and the environment, which suffer the adverse effects of wildfire/bush fire.

Bush Fire Threat: potential bush fire exposure of an asset due to the proximity and type of a hazard and the slope on which the hazard is situated.

Consequence: outcome or impact of a bush fire event.

Fire Fighting Authorities: the NSW Rural Fire Service, NSW Fire Brigades, the National Parks and Wildlife Service and Forests NSW.

Likelihood: the chance of a bush fire igniting and spreading.

Major Bush Fire: A bush fire which requires the attendance of multiple brigades, or causes damage to property or injury to one or more persons.

Display area: geographic area determined by the Bush Fire Management Committee which is used to provide a suitable area and scale for community participation and mapping display purposes.

Recovery costs: the capacity of an asset to recover from the impacts of a bush fire.

Risk Acceptance: an informed decision to accept the consequences and the likelihood of a particular risk.

Risk Analysis: a systematic process to understand the nature of and to deduce the level of risk.

Risk Assessment: the overall process of risk identification, risk analysis and risk evaluation.

Risk Identification: the process of determining what, where, when, why, and how something could happen.

Risk Treatment: the process of selection and implementation of measures to modify risk.

Vulnerability: the susceptibility of an asset to the impacts of bush fire.

Chapter 1. Introduction

1.1 Background

Under the *Rural Fires Act 1997* the Bush Fire Coordinating Committee (BFCC) must constitute a Bush Fire Management Committee (BFMC) for each area in the State, which is subject to the risk of bush fires. Each BFMC is required to prepare and submit to the BFCC a draft Bush Fire Risk Management Plan (BFRMP).

A BFRMP is a strategic document that identifies community assets at risk and sets out a five-year program of coordinated multi-agency treatments to reduce the risk of bush fire to the assets. Treatments may include such things as hazard reduction burning, community education and fire trail maintenance.

Annual programs to implement the treatments identified in this plan will be undertaken by the relevant land managers and fire fighting authorities.

In exercising its functions under the *Rural Fires Act 1997*, including the preparation of a bush fire risk management plan, the Hills BFMC is required to have regard to the principles of ecologically sustainable development (ESD).

This document and the accompanying maps together form the BFRMP for The Hills BFMC area.

This BFRMP has been prepared by The Hills BFMC and covers both public and private lands. This BFRMP must be reviewed and updated within each successive five-year period from the constitution of the BFMC.

The BFCC recognises that climate change has the potential to increase bush fire risk. The risk assessment process applied in this BFRMP is based on current climatic conditions. The BFCC will monitor information on climate change and will modify the process when necessary.

1.2 Aim and Objectives

The **aim** of this BFRMP is to minimise the risk of adverse impact of bush fires on life, property and the environment.

The **objectives** of this BFRMP are to:

- reduce the number of human-induced bush fire ignitions that cause damage to life, property and the environment;
- manage fuel to reduce the rate of spread and intensity of bush fires, while minimising environmental/ecological impacts;
- reduce the community's vulnerability to bush fires by improving its preparedness; and
- effectively contain fires with a potential to cause damage to life, property and the environment.

1.3 Description of The Hills BFMC Area

1.3.1 Location and land tenure

The Hills BFMC area is located in Sydney's North West in New South Wales and includes the Local Government Area of The Hills Shire.

The area covered by The Hills BFMC is approximately 38,630 hectares and includes the land tenures outlined in Table 1.1.

Table 1.1 Land Tenure

Land Manager	% of BFMC area (Approx)
National Parks and Wildlife Service	1.5
Forestry Corporation of NSW	0.1
Department of Lands	9.0
Local Government	7.0
Private	81.4
Other (including Sydney Water, RMS, Endeavour Energy, Department of Education and Training, Department of Planning)	1.0

1.3.2 Climate and bush fire season

The typical/average climate in The Hills BFMC area is warm summers and cool winters with the most rainfall received during summer and autumn (December to May) and a drier winter and spring (June to November).

The start of the normal bush fire season coincides with northwest winds, which often prevail during late spring (Sep/Oct). The majority of serious bushfires occur from this period until the onset of autumn.

1.3.3 Population and demographic information

The Hills BFMC area is predominantly residential and rural. The rural areas in the northern part of the Shire boast significant amounts of agriculture, national parks, as well as semi-rural and rural-residential living. The southern parts of the Shire feature well-established residential and commercial areas as well as large areas of recent residential and employment development.

The population of The Hills BFMC area is approximately 172,473 people with the major population centres being the more established Baulkham Hills, Castle Hill and West Pennant Hills. Areas of growth now and into the future however include the precincts of Kellyville, North Kellyville, Rouse Hill and Box Hill with some increase in the more rural areas of Kenthurst, Glenorie, Maroota and South Maroota due to Rural Cluster Subdivisions.

1.3.4 History of bush fire frequency and ignition cause

The Hills BFMC area has on average 153 bush fires per year, of which approximately 4 on average can be considered to be major fires.

Major bush fires that have occurred in The Hills Shire were in 1939, 1975, 1991, 1994, 2002, 2006. The most notable were in 1991 and 2002. In 1991 a 1630Ha fire burnt through Kenthurst under a NW wind and resulted in the loss of two lives and the destruction of 7 homes. In 2002 over 45,000Ha were burnt after 3 fires joined together. The fire destroyed 31 homes and 47 other structures and damaged many more.

Most commonly today the main sources of ignition in The Hills BFMC area are:

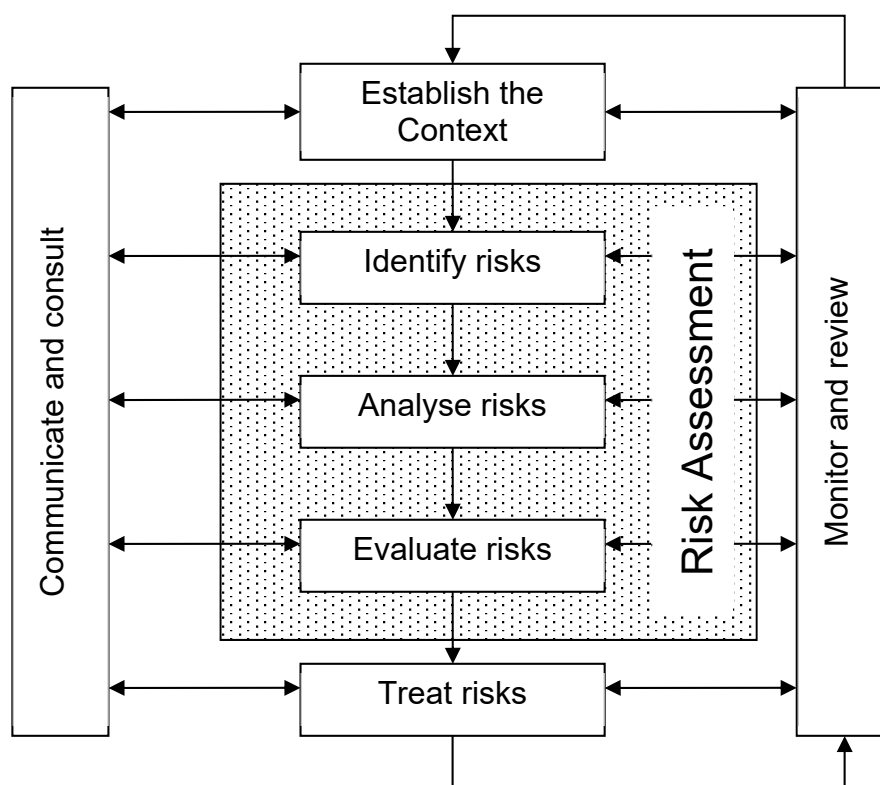
- Escaped private hazard reductions burns;
- Lightning; and
- Arson.

Chapter 2. Identifying and Assessing the Bush Fire Risk

2.1 Process

The Australia/New Zealand Standard *AS/NZS 4360: 2004 Risk Management* was used as the basis for the risk assessment process. See Figure 2.1 for the steps involved. For a detailed description of the process undertaken see the Bush Fire Risk Management Planning Guidelines for Bush Fire Management Committees on the RFS website: www.rfs.nsw.gov.au.

Figure 2.1 Overview of the risk assessment process



2.2 Communication and Consultation

Community participation is an integral part of risk management. The Community Participation Strategy involved developing and implementing a process to address the needs, issues and concerns of stakeholders within the BFMC area in regards to the BFRMP. See Appendix 1 for the Community Participation Strategy used by The Hills BFMC in preparing this BFRMP.

2.3 Identifying the Bush Fire Risk

Identifying the level of bush fire risk firstly involved identifying important community assets considered to be at risk from bush fire in The Hills BFMC area, and then assessing the likelihood and consequence ratings.

2.3.1 Assets

BFMC members and the community, including RFS volunteers, identified assets within The Hills BFMC that they believed were at risk of bush fire. The assets were divided into four asset types:

Human settlement

- Residential areas including urban bushland interface areas and rural properties;
- Special Fire Protection areas including schools, hospitals, nursing homes, and tourist facilities;
- Other human settlement areas including commercial and industrial areas where distinct from major towns; and
- Neighbourhood Safer Place (NSP) is defined by the *Rural Fires Act 1997* as *land or a building designated as a neighbourhood safer place under section 62C*. NSPs provide a place of last resort for people during a bush fire. All designated NSP locations for NSW are available at www.rfs.nsw.gov.au.

Economic

- Agricultural; e.g. orchards, plant nurseries, cropping/grazing land;
- Commercial/industrial e.g. major industries, waste treatment plants;
- Infrastructure e.g. regional and domestic power supply lines, gas and oil pipelines, railway lines, electricity substations, communication facilities and supply lines;
- Tourist and recreational e.g. tourist sites and facilities, resorts, retreats;
- Rural based home industry and infrastructure; and
- Mining sand and hard rock and various infrastructure.

Environmental

- Threatened species, populations and endangered ecological communities and Ramsar wetlands;
- Locally important species and ecological communities, such as species and ecological communities especially sensitive to fire.
- SEPP Coastal Management 2018.

Cultural

- Aboriginal significance – Aboriginal places and items of significance;
- Non-indigenous heritage – places and items arising from the early occupation of NSW by European or other non-indigenous settlers; and
- Other cultural assets – community halls, clubs and recreational facilities.

See Appendix 2 for the full list of assets identified within The Hills BFMC area. See maps 1-4 for the location of assets to be treated under this BFRMP.

Note: The more sensitive Assets (ie Environmental and Indigenous Cultural) do not appear within the Map Display Areas so as to protect their locations from being disclosed to the general public. Despite this specific treatments for their protection from high fire intensities and too frequent regimes are taken into account during fire management and planning processes.

2.3.2 Assessing the Bush Fire Risk - Consequence

Once the assets were identified, the consequence of a bush fire impacting on these assets was assessed.

See Appendix 2 for the consequence ratings assigned to each asset identified in The Hills BFMC area.

The different asset types had different assessment processes used to determine the consequence. These processes are identified below.

Human settlement

A potential fire behaviour model using vegetation type, slope and separation distance was used to produce a threat rating for human settlement assets. The vulnerability of the asset to a bush fire was also assessed and a rating assigned. These ratings were then used to assess the consequence of a bush fire impacting upon a human settlement asset.

Special Fire Protection (SFP) assets were considered inherently more vulnerable to bush fire due to mobility capacity, knowledge or other issues relating to their inhabitants, (e.g. the elderly, infirm, children or tourists) and therefore stricter requirements for vulnerability assessment and rating were applied.

Due to circumstances surrounding NSPs and their use during a bush fire, stricter requirements for vulnerability assessment and rating will also apply to these assets.

Economic

The level of economic impact e.g. local, regional or state, as well as the economic recovery costs (how long and complicated a financial recovery will be) of the asset were identified. These ratings were used to assess the consequence of a bush fire impacting upon an economic asset.

Environmental

Environmental assets with known minimum fire threshold were assessed to determine if they were at risk of a bush fire within the 5 year life of the BFRMP. Those environmental assets which were within or above the fire threshold were not assessed in the BFRMP, as the negative impact of a fire within the 5 year period was determined as being low and may even be of benefit to the asset and surrounding habitat.

The vulnerability of an environmental asset was determined by its conservation status and its geographic extent (distribution across the landscape). Vulnerability and potential impact of bush fire were used to assess the consequence of a bush fire impacting upon an environmental asset.

Cultural

For non-indigenous historical, Aboriginal and other cultural assets a potential fire behaviour model using fuel load, slope and proximity was used to produce a threat rating. The physical vulnerability of the asset to a bush fire was also assessed. These ratings were then used to assess the consequence of a bush fire impacting upon a cultural asset.

2.3.3 Assessing the Bush Fire Risk - Likelihood

For all asset types the likelihood of a bush fire occurring was assessed. This involves considering fire history, including ignition cause and patterns, known fire paths, access, containment potential and potential fire run (size of the vegetated area). See Appendix 2 for the likelihood ratings assigned to each asset identified in The Hills BFMC area.

2.3.4 Identifying the level of risk

The consequence and likelihood ratings were then used to identify the level of risk. See Appendix 2 for the risk ratings assigned to each asset identified in The Hills BFMC area.

2.3.5 Evaluating the Bush Fire Risk

Once the risk ratings for each asset were identified, they were evaluated to:

- a) confirm that risk levels identified in the risk analysis process are appropriate and reflect the relative seriousness of the bush fire risk;
- b) identify which assets require treatments; and
- c) identify treatment priorities.

2.3.6 Prioritising Treatments

No organisation has limitless resources to deal with adverse risk. It is therefore necessary to define priorities. The bush fire risk ratings determined were used to prioritise the risk treatments, i.e. areas of extreme risk were considered first for treatment, then very high, then high then medium then low.

2.3.7 Risk Acceptability

Risks below a certain level were assessed as not requiring treatment within the life of this plan. This is due to a combination of risk priority and capacity to undertake the works. Within The Hills BFMC area the level of acceptability is high. Areas of high, medium or low risk are likely to be managed by routine procedures and so do not require a specific application of resources.

The Hills BFMC has accepted that there will be extreme and very high risk to some environmental, aboriginal and non indigenous cultural assets of significance. The Hills BFMC will not be applying specific treatments to these assets as they may not be appropriate or may have the potential to damage the asset. However, the protection and management of these assets will be taken into account during the planning of treatments for the area. The BFMC wide treatments, in addition to scheduled treatments such as prescribed burns and fire trail maintenance, are likely to contribute toward the reduction of risk to these assets.

All NSPs for a BFMC area will require ongoing treatment by the applicable land owner to ensure that the asset remains viable as a place of last resort for people during a bush fire. Therefore, all NSP assets are allocated specific treatments in this Plan, regardless of the level of bush fire risk identified and the risk acceptability nominated by The Hills BFMC.

Chapter 3. Treating the Risk

3.1 Bush Fire Management Zones

Bush Fire Management Zones were identified within The Hills BFMC area and mapped (see maps 1-4). These zones identify the fire management intent for a specific area. See Table 3.1 for descriptions of the zones and their purposes. The four categories of Bush Fire Management Zones are:

- Asset Protection Zone (APZ);
- Strategic Fire Advantage Zone (SFAZ);
- Land Management Zone (LMZ); and
- Fire Exclusion Zone (FEZ).

Table 3.1 Bush Fire Management Zones: Purpose, objectives and characteristics

Zone	Purpose	Suppression Objective(s)	Zone characteristics
Asset Protection Zone	To protect human life, property and highly valued public assets and values.	To enable the safe use of Direct Attack suppression strategies within the zone. To minimise bush fire impacts on undefended assets.	As per RFS document <i>Standards for Asset Protection Zones</i> .
Strategic Fire Advantage Zone	To provide strategic areas of fire protection advantage which will reduce the speed and intensity of bush fires, and reduce the potential for spot fire development; To aid containment of wildfires to existing management boundaries.	To improve the likelihood and safe use of: Parallel Attack suppression strategies within the zone. and/or Indirect Attack (back burning) in high to very high fire weather conditions within the zone. To reduce the likelihood of: Crown fire development within the zone. and/or Spot fire ignition potential from the zone .	Zone width related to suppression objectives and dependant upon: <ul style="list-style-type: none"> • Topography • Aspect • Spotting propensity • Location of adjacent firebreaks • Mosaic pattern of treatment Assess Overall Fuel Hazard (OFH) once vegetation communities reach minimum fire thresholds within this plan. Management practices should aim to achieve mosaic fuel reduction patterns so that the majority of the SFAZ has an OFH of less than high.
Land Management Zone	To meet relevant land management objectives in areas where APZs or SFAZs are not appropriate.	As per the land management and fire protection objectives of the responsible land management agency. To reduce the likelihood of spread of fires. To undertake mosaic burning	As appropriate to achieve land management e.g. heritage and/or fire protection e.g. broad scale mosaic burning objectives.
Fire Exclusion Zone	To exclude bush fires.	N/A	Variable dependant on size of fire sensitive area requiring protection.

NB: OFH refers the Overall Fuel Hazard Guide as described in the document published by (Dept. of Sustainability and Environment 3rd ed. 1999 & NPWS version); State-wide procedures for assessment of fuel hazard will be developed in conjunction with the BFCC.

Note: All areas that are not mapped or described as APZs, SFAZs or FEZs are considered as LMZs.

3.2 BFMC Wide Treatments

BFMC wide treatments are activities which reduce the overall bush fire risk within the BFMC area and are undertaken on an ongoing basis as part of normal business. These treatments are not linked to specific assets in the BFRMP, rather they are applied across all or part of the BFMC area as designated by legislation or agency policy. BFMC wide treatments include the following:

- **Reviewing the bush fire prone land map**

These maps identify bush fire prone land and are used to trigger whether a development application is assessed using *Planning for Bush Fire Protection*¹.

- **Ensuring developments in bush fire prone land comply with *Planning for Bush Fire Protection***

This assessment process requires new applications for development to include bush fire protection measures.

- **Using the Local Environment Plan/s (LEPs) to control developments in areas with a bush fire risk**

LEPs can be used to exclude development in extreme bush fire risk areas or where bush fire protection measures cannot be incorporated.

- **Varying the standard bush fire danger period as required**

In years where the weather is particularly adverse the bush fire danger period may be brought in early or extended. This is assessed every year by the BFMC. The standard bush fire danger period in The Hills BFMC area is 1st October to 31st March.

- **Requiring permits during the bush fire danger period**

In the bush fire danger period a fire safety permit is required to light a fire in the open. Permits specify conditions such as fire fighting equipment that must be on site, or restrict burns based on weather conditions.

- **Prosecution of arsonists/offenders**

Under the *Rural Fires Act 1997* persons may be prosecuted for breaching the conditions on a fire permit, lighting a fire during a Total Fire Ban, allowing fire to escape their property, or other breaches of the Act.

- **Investigation of bush fire cause**

All bush fires which do not have a known cause are investigated to identify how they started.

- **Normal fire suppression activities**

Responding to bush fire is a normal business activity for the fire fighting authorities.

¹ NSW Rural Fire Service 2006 *Planning for Bush Fire Protection: A guide for councils, planners, fire authorities and developers*.

- **Assessing and managing compliance with strategic fire fighting resource allocation provisions**

Strategic fire fighting resource allocation provisions is the process used to identify the number of stations, brigades and appliances required in an area, and considers members, training, assets and hazards.

- **Preparation of a S52 Operations Coordination Plan**

The Operations Coordination Plan is prepared biannually and sets out how coordinated fire fighting will occur. It includes specific operational restrictions on fire fighting techniques in certain areas, where fires will be managed from, and how agencies involved can communicate during operations.

- **Fire Management Plans or Plans of Management**

Land management agencies within the Hills BFMC (such as NPWS, Forestry Corporation of NSW, Council or Bidjigal Reserve Trust board) have developed fire management plans or plans of management with specific fire or fuel management strategies. These plans form the basis for operational fire planning on public parks, reserves, biobanking and operational sites and forests.

- **Bush Fire Hazard Complaints**

If someone is concerned about possible bush fire hazards on a neighbouring property or any other land, then this can be reported to the RFS Commissioner or their local RFS Fire Control Centre. The complaint will be investigated and may result in a notice being issued to the landowner or manager to reduce the hazard.

3.3 Asset Specific Treatments

There are four broad strategy groups available to treat the bush fire risk to assets identified in the BFRMP.

The types of asset specific treatments in each strategy group used in The Hills BFMC area are listed below. A full list of the treatment strategies in The Hills BFMC area are in Appendix 3.

Table 3.2 Asset specific treatments used in The Hills BFMC area

Strategy	Targeted treatments used in The Hills BFMC area
Hazard Reduction	<ul style="list-style-type: none"> Inspect Asset Protection Zones (APZs) and maintain as required. Implement The Hills BFMC Prescribed Burning Works Plan to maintain fuel loads to prescription (<5t/ha). Implement vegetation maintenance as per HV Network Management Plans of Endeavour Energy and TransGrid.
Community Education	<ul style="list-style-type: none"> Target interface areas for bush fire community engagement programs.
Property Planning	<ul style="list-style-type: none"> Assist vulnerable developments to prepare bushfire emergency procedures for their facilities and occupants. Procedures will determine their evacuation and/or shelter in place options.
Preparedness	<ul style="list-style-type: none"> Inspect and maintain existing fire trails as per The Hills BFMC FAFT Plan. Maintain Community Fire Units and training as per FRNSW policy

3.4 Fire Thresholds

The vegetation in The Hills BFMC area has been classified into fire threshold categories. These are defined below in Table 3.3.

Table 3.3 Fire Thresholds for Vegetation Categories

Vegetation formation	Minimum SFAZ Threshold	Minimum LMZ Threshold	Maximum Threshold	Notes
Rainforest	NA	NA	NA	Fire should be avoided.
Wet Sclerophyll forest (shrubby subformation)	25	30	60	Crown fires should be avoided in the lower end of the interval range.
Wet Sclerophyll forest (grassy subformation)	10	15	50	Crown fires should be avoided in the lower end of the interval range.
Grassy woodland	5	8	40	Minimum interval of 10 years should apply in the southern Tablelands area. Occasional intervals greater than 15 years may be desirable.
Grassland	2	3	10	Occasional intervals greater than 7 years should be included in coastal areas. There was insufficient data to give a maximum interval; available evidence indicates maximum intervals should be approximately 10 years.
Dry sclerophyll forest (shrub/grass subformation)	5	8	50	Occasional intervals greater than 25 years may be desirable.
Dry sclerophyll forest (shrub subformation)	7	10	30	Occasional intervals greater than 25 years may be desirable.
Heathlands	7	10	30	Occasional intervals greater than 20 years may be desirable.
Freshwater wetlands	6	10	35	Occasional intervals greater than 30 years may be desirable.
Forested wetlands	7	10	35	Some intervals greater than 20 years may be desirable.
Saline wetlands	NA	NA	NA	Fire should be avoided.
Semi-arid woodlands (grassy subformation)	6	9	No max	Not enough data for a maximum fire interval.
Semi-arid woodlands (shrubby subformation)	10	15	No max	Not enough data for a maximum fire interval.
Arid shrublands (chenopod subformation)	NA	NA	NA	Fire should be avoided.
Arid shrublands (acacia subformation)	10	15	No max	Not enough data for a maximum fire interval.

3.5 Annual Works Programs

The land management agencies and fire fighting authorities responsible for implementing the treatments identified in this plan will include those treatments in their annual works programs detailing how, when, and where the required activities will be undertaken.

3.6 Implementation

When the treatments identified in this BFRMP are implemented there are a number of issues that need to be considered by the responsible agency including environmental assessments and approvals, smoke management and prescribed burn plans.

Chapter 4. Performance Monitoring and Reviewing

4.1 Review

This BFRMP must be reviewed and updated within each successive five-year period from the constitution of the BFMC. The Hills BFMC will also review this plan as necessary to account for any changes in context or risk. This may be triggered by a range of circumstances, including but not limited to:

- changes to the BFMC area, organisational responsibilities or legislation;
- changes to the bush fire risk in the area; or
- following a major fire event.

4.2 Monitoring

The BFMC is required to monitor progress towards the completion of treatment works listed in the BFRMP, and the timeliness of the works.

4.3 Reporting

The BFMC is required to report annually to the BFCC on its progress in implementing the bush fire risk management activities identified in this plan.

4.4 Performance Measurements

State wide performance measurements which are linked to the BFRMP have been identified by the BFCC. All BFMCs must use these to monitor and report on their success in reducing the bush fire risk in their BFMC area.

Appendix 1 Community Participation Strategy

Appendix 2 Asset Register

Appendix 3 Treatment Register

Appendix 4 Maps 1-4

- Map 1 – Maroota
- Map 2 – Kenthurst
- Map 3 – Glenhaven
- Map 4 – North Rocks

Appendix 1. Community Participation Strategy

1.1 Target Audience

The BFMC considered the demographics of the area and the formal and informal networks operating within the community to identify potential organisation's and individuals to be targeted. These are identified in the following table.

Target Audience	Description
Agency Networks	Existing formal and informal networks within and between emergency service agencies, functional area agencies and the community
Community	People who live or have assets within the area, particularly those potentially affected by bush fire.
Community groups	Existing formal and informal networks operating within the community: <ul style="list-style-type: none">• Progress associations• Service clubs• Community Action groups• Schools• Local Aboriginal groups, communities and land councils
Existing BFMC sub-committees	Existing formal and informal networks within the existing BFMC structure
Local Government networks	Local government/community interactions and formal and informal networks based on the local council
RFS Brigades	Formal volunteer groups with an active interest in fire management
Other BFMCs	Hornsby/Ku-ring-gai and Hawkesbury

1.2 Issues to be communicated

The BFMC identified these to be:

- The community context and criteria for identifying bush fire risk in the area - *what do community members perceive to be a risk.*
- Limitations and modifications to existing data on local fire history, fire behaviour and impacts - *what further information may community members be able to provide relating to previous fire history, fire behaviour and potentials.*
- Community involvement in the identification of valuable community assets - *what context and criteria do community members use to identify assets.*
- Community involvement and awareness of risk analysis and evaluation - *discussion of likelihood and consequence ratings.*
- Community involvement and awareness in the application of treatment strategies, options and priorities -*discussion and consideration of options, priorities, resourcing and responsibilities.*

1.3 Methods of Communication

The BFMC identified that a range of communication methods should be utilised to inform the community of the BFRMP review. These methods should aim to encourage face-to-face community participation in addition to written or oral submissions.

The message to be delivered shall:

- Inform the community of The Hills District Bush Fire Risk Management Plan;
- What it specifically is (and isn't);
- Outline the process involved in its development, including the consultation process - how the community can participate; and
- Advise where to go for information.

The methods to be utilised are listed in the following table.

Communication	Description	Responsibility
Circulars/Memos/emails	Internal agency communications	BFMC representatives are responsible for communicating within their own agency / organisation
Mail Out	Informative letters to community	BFMC Executive Officer
Media (Local print, radio and TV)	Use to distribute information on the BFRMP, community meetings, information sources and contact methods	RFS Media and BFMC Executive Officer
Internet	Use RFS website for posting information to inform and promote the BFRMP processes.	BFMC Executive Officer
Community Meetings	To facilitate open forums and semi-structured discussion	All BFMC members
Existing meetings	E.g. Rotary, RFS brigades, Progress Associations, Local Community Groups.	BFMC members to provide speakers for such functions where the organisation invites them to do so
Kiosks/Displays	Small displays at specific locations to enhance one-on-one communication/discussion	All BFMC members
Panel/Discussion Group	Engagement of additional or specific stakeholders to facilitate discussion of issues throughout the development process	BFMC Executive Officer, identified BFMC members

1.4 The Hills Bush Fire Risk Management Committee Community Participation Strategy

Date	Target Audience	Method of communication	Resources required	Responsibility	Completed
4 April 2019	BFMC	Pre-Planned meeting; presentation of Draft BFRMP at Meeting.	<ul style="list-style-type: none"> • Powerpoint presentation • BFRMP Support Officer • Maps 	RFS, BFMC	04/04/2019
30 April 2019	RFS Group Officers/Captains & Senior Deputies	Pre-Planned meeting; presentation of Draft BFRMP at Meeting.	<ul style="list-style-type: none"> • Powerpoint presentation • BFRMP Support Officer • Maps 	RFS	30/04/2019
13 May - 24 June 2019	Community	PUBLIC EXHIBITION - Advertisement on Brigade Facebook and in The Hills Shire Times, Living Heritage, Kenthurst News, Forgotten Valley Views, Dooral Roundup, Galston Glenorie Community News and The Hills Focus.	<ul style="list-style-type: none"> • Article advertising The Hills BFRMP is on Public Exhibition. Contact The Hills FCC for a copy. Invitation to attend Information Day at the Hills FCC. 	RFS, Council	24/06/19
13 May - 24 June 2019	Community	PUBLIC EXHIBITION - Information Station at Council Chambers	<ul style="list-style-type: none"> • BFRMP • Maps 	RFS, Council	24/06/19
23/10/19	Community	Information Day	<ul style="list-style-type: none"> • Powerpoint presentation • BFRMP Support Officer • Maps 	BFMC	23/10/19

Appendix 2 Asset Register

Risk	Priority	Map Ref No.	Asset type	Asset sub type	Asset name	Display area	Likelihood	Consequence	Treatment No.
Extreme	1B	1	Human Settlement	Special Fire Protection	Kenthurst Study Centre	Kenthurst	Likely	Catastrophic	5
Extreme	1B	2	Human Settlement	Special Fire Protection	Hillside Public School	Kenthurst	Likely	Catastrophic	5
Extreme	1B	3	Human Settlement	Special Fire Protection	Youth With a Mission	Kenthurst	Likely	Catastrophic	5
Extreme	1B	4	Human Settlement	Special Fire Protection	Days Road Christian Community Centre	Maroota	Likely	Catastrophic	5
Extreme	1B	5	Human Settlement	Residential	Kenthurst (Nyari to Cadwells)	Kenthurst	Likely	Catastrophic	12;6;4;1
Extreme	1B	6	Human Settlement	Residential	Annangrove (Everett to Hillclimb)	Kenthurst	Likely	Catastrophic	4;9
Extreme	1B	7	Human Settlement	Residential	Annangrove (Nelson to Amanda)	Kenthurst	Likely	Catastrophic	4;9
Extreme	1B	8	Human Settlement	Residential	Nelson (Nelson to Everett)	Kenthurst	Likely	Catastrophic	4;9
Extreme	1B	9	Human Settlement	Residential	Kenthurst (Johnson to Pedvin)	Kenthurst	Likely	Catastrophic	2;4;9
Extreme	1B	10	Human Settlement	Residential	Kenthurst (Burrell to Tallawung)	Kenthurst	Likely	Catastrophic	4;9
Extreme	1B	11	Human Settlement	Residential	Annangrove (Pedvin to OKeefe)	Kenthurst	Likely	Catastrophic	4;9;2
Extreme	1B	12	Human Settlement	Residential	Annangrove (Whites Ridge to Woodland)	Kenthurst	Likely	Catastrophic	4;9;2
Extreme	1B	13	Human Settlement	Residential	Annangrove (Woodland to Gibber)	Kenthurst	Likely	Catastrophic	2;4;9
Extreme	1B	14	Human Settlement	Residential	Kenthurst (Campbell to Nicholii)	Kenthurst	Likely	Catastrophic	9;4
Extreme	1B	15	Human Settlement	Residential	Kenthurst (Blue Gum to Campbell)	Kenthurst	Likely	Catastrophic	9;4
Extreme	1B	16	Human Settlement	Residential	Annangrove (Campbell to Aston)	Kenthurst	Likely	Catastrophic	4;9;12
Extreme	1B	17	Human Settlement	Residential	Kenthurst (Campbell to Ellendale)	Kenthurst	Likely	Catastrophic	4;9;7
Extreme	1B	18	Human Settlement	Residential	Kenthurst (Lisbon to Jones)	Kenthurst	Likely	Catastrophic	9;4;7
Extreme	1B	19	Human Settlement	Residential	Kenthurst (Jones to Sedger)	Kenthurst	Likely	Catastrophic	4;7;9
Extreme	1B	20	Human Settlement	Residential	Kenthurst (Sedger to Raym)	Kenthurst	Likely	Catastrophic	4;9;7
Extreme	1B	21	Human Settlement	Residential	Kenthurst (Binalong to Marieba)	Kenthurst	Likely	Catastrophic	4;9
Extreme	1B	22	Human Settlement	Residential	Kenthurst (Pamela to Hilton)	Kenthurst	Likely	Catastrophic	4;9
Extreme	1B	23	Human Settlement	Residential	Middle Dural (Kandara to Smiths)	Kenthurst	Likely	Catastrophic	4;10;9
Extreme	1B	24	Human Settlement	Residential	Kenthurst (Hazeldean to Roughley)	Kenthurst	Likely	Catastrophic	9;4;10;1
Extreme	1B	25	Human Settlement	Residential	Kenthurst (Cadwells to Porters)	Kenthurst	Likely	Catastrophic	6;4;8
Extreme	1B	26	Human Settlement	Residential	Kenthurst (Hazeldean to Porters)	Kenthurst	Likely	Catastrophic	4;8
Extreme	1B	27	Human Settlement	Residential	Kenthurst (Orana to Nyari)	Kenthurst	Likely	Catastrophic	11;4;9
Extreme	1B	28	Human Settlement	Residential	Kenthurst (Orana to Pitt Town)	Kenthurst	Likely	Catastrophic	4;9
Extreme	1B	29	Human Settlement	Residential	Kenthurst (Coppertail to Orana)	Kenthurst	Likely	Catastrophic	10;4;9
Extreme	1B	30	Human Settlement	Residential	Kenthurst (Coppertail to Allawah)	Kenthurst	Likely	Catastrophic	10;4;9
Extreme	1B	31	Human Settlement	Residential	Kenthurst (Pyes to Lang)	Kenthurst	Likely	Catastrophic	10;4;9
Extreme	1B	32	Human Settlement	Residential	Kenthurst (McClymonts to Pyes)	Kenthurst	Likely	Catastrophic	4;10;9
Extreme	1B	33	Human Settlement	Residential	Kenthurst (McClymonts to Maguires)	Kenthurst	Likely	Catastrophic	4;9
Extreme	1B	34	Human Settlement	Residential	Kenthurst (Gibbs to Allawah)	Kenthurst	Likely	Catastrophic	4;9;8
Extreme	1B	35	Human Settlement	Residential	Glenorie (Schwebel to Sermelfi)	Kenthurst	Likely	Catastrophic	4;12
Extreme	1B	36	Human Settlement	Residential	Glenorie (Boronia to Schwebel)	Kenthurst	Likely	Catastrophic	7;4
Extreme	1B	37	Human Settlement	Residential	Glenorie (Cattai Ridge to Boronia)	Kenthurst	Likely	Catastrophic	9;4
Extreme	1B	38	Human Settlement	Residential	Glenorie (Smiths to Cattai Ridge)	Kenthurst	Likely	Catastrophic	9;4;8
Extreme	1B	39	Human Settlement	Residential	Glenorie (Cattai Ridge to Miller)	Kenthurst	Likely	Catastrophic	4;9;7
Extreme	1B	40	Human Settlement	Residential	Glenorie((Miller)	Kenthurst	Likely	Catastrophic	4;9
Extreme	1B	41	Human Settlement	Residential	Glenorie (Miller to Newman)	Kenthurst	Likely	Catastrophic	4;10;9
Extreme	1B	42	Human Settlement	Residential	Glenorie (Neich to Fern Gully)	Kenthurst	Likely	Catastrophic	9;4;7
Extreme	1B	43	Human Settlement	Residential	Glenorie (Cattai Ridge to Neich)	Kenthurst	Likely	Catastrophic	4
Extreme	1B	44	Human Settlement	Residential	Glenorie (Mount View to Sermelfi)	Kenthurst	Likely	Catastrophic	9;4;10;1
Extreme	1B	45	Human Settlement	Residential	Glenorie (Mount View to Cockatoo)	Kenthurst	Likely	Catastrophic	4;9;10
Extreme	1B	46	Human Settlement	Residential	Glenorie (Cockatoo to Broadwater)	Kenthurst	Likely	Catastrophic	4;9;10
Extreme	1B	47	Human Settlement	Residential	Glenorie (Newman to Cattai Creek)	Kenthurst	Likely	Catastrophic	9;4;10
Extreme	1B	48	Human Settlement	Residential	Glenorie (Smallwood to Halcrows)	Maroota	Likely	Catastrophic	4;9;10
Extreme	1B	49	Human Settlement	Residential	Cattai (Halcrows to Gas Pipeline)	Kenthurst	Likely	Catastrophic	4;9;7
Extreme	1B	50	Human Settlement	Residential	Maraylya (Cattai Ridge to PittTown)	Kenthurst	Likely	Catastrophic	4;9;8

Appendix 2 Asset Register

Risk	Priority	Map Ref No.	Asset type	Asset sub type	Asset name	Display area	Likelihood	Consequence	Treatment No.
Extreme	1B	51	Human Settlement	Residential	Maraylya (Cattai Ridge to St Johns)	Kenthurst	Likely	Catastrophic	4
Extreme	1B	52	Human Settlement	Residential	Kenthurst (Pitt Town to Hidden Valley)	Kenthurst	Likely	Catastrophic	8;4;9
Extreme	1B	53	Human Settlement	Residential	Glenorie (Smallwood to Broadwater)	Maroota	Likely	Catastrophic	4;9;10
Extreme	1B	54	Human Settlement	Residential	South Maroota (Chilvers to Floyds)	Maroota	Likely	Catastrophic	4;3;8;7
Extreme	1B	55	Human Settlement	Residential	South Maroota (Wheeny Creek to Chilvers)	Maroota	Likely	Catastrophic	4;7;9
Extreme	1B	56	Human Settlement	Residential	South Maroota (Pacific Park to Charcoal)	Maroota	Likely	Catastrophic	4;9;13
Extreme	1B	57	Human Settlement	Residential	South Maroota (Kearney to Floyds)	Maroota	Likely	Catastrophic	4;9;10
Extreme	1B	58	Human Settlement	Residential	South Maroota (Pacific Park to Sackville Ferry)	Maroota	Likely	Catastrophic	4;9;12
Extreme	1B	59	Human Settlement	Residential	South Maroota (Paulls to Kearney)	Maroota	Likely	Catastrophic	4;9;10
Extreme	1B	60	Human Settlement	Residential	South Maroota (Paulls to Days)	Maroota	Likely	Catastrophic	4;9;10
Extreme	1B	61	Human Settlement	Residential	South Maroota (Days to Wisemans Ferry)	Maroota	Likely	Catastrophic	4;9
Extreme	1B	62	Human Settlement	Residential	Sackville North (Sackville Ferry to Mud Island)	Maroota	Likely	Catastrophic	4;9;10
Extreme	1B	63	Human Settlement	Residential	Maroota (Blakers to Stevensons)		Likely	Catastrophic	4;10
Extreme	1B	64	Human Settlement	Residential	South Maroota (Gallaghers to Tuff Hill)	Maroota	Likely	Catastrophic	4;9;10
Extreme	1B	65	Human Settlement	Residential	South Maroota (Sackville Ferry to Tuff Hill)	Maroota	Likely	Catastrophic	9;4;10
Extreme	1B	66	Human Settlement	Residential	Lower Portland (Lower half moon to Upper half moon)	Maroota	Likely	Catastrophic	4;9;11
Extreme	1B	67	Human Settlement	Residential	Wisemans Ferry (Cardiffs to Mr Sharps Track)	Maroota	Likely	Catastrophic	4;10;9
Extreme	1B	68	Human Settlement	Residential	Sackville North (Tuff Hill to River East)	Maroota	Likely	Catastrophic	4;9
Extreme	1B	69	Human Settlement	Residential	Lower Portland (Cliftonville to Lower Half Moon)	Maroota	Likely	Catastrophic	4;11
Extreme	1B	70	Human Settlement	Residential	Lower Portland (Barjacks to Dargle)	Maroota	Likely	Catastrophic	4;9;11
Extreme	1B	71	Human Settlement	Residential	Maroota (Barjacks to Cliftonville)	Maroota	Likely	Catastrophic	4;9;11
Extreme	1B	72	Human Settlement	Residential	Maroota (Dalgety to Mr Sharp)	Maroota	Likely	Catastrophic	4;9
Extreme	1B	73	Human Settlement	Residential	Leets Vale (River to Mr Sharps)	Maroota	Likely	Catastrophic	4;9;10
Extreme	1B	74	Human Settlement	Residential	Wisemans Ferry (Old Northern to River)	Maroota	Likely	Catastrophic	1;4
Extreme	1B	75	Human Settlement	Residential	Maroota (Idlewild to Maroota Tracks)	Maroota	Likely	Catastrophic	4;11
Extreme	1B	76	Human Settlement	Residential	Glenorie (Yoothamurra to Idlewild)	Maroota	Likely	Catastrophic	4;9;11
Extreme	1B	77	Human Settlement	Residential	Glenorie (Spur to Yoothamurra)	Maroota	Likely	Catastrophic	9;4;10
Extreme	1B	78	Human Settlement	Residential	Lower Portland (Quasimodo)	Maroota	Likely	Catastrophic	4;10
Very High	2A	79	Human Settlement	Special Fire Protection	Glenhaven Private Preschool	Glenhaven	Likely	Major	5
Very High	2A	80	Human Settlement	Special Fire Protection	Rainbow Haven Kindergarten	Glenhaven	Likely	Major	5
Very High	2A	81	Human Settlement	Special Fire Protection	The Hills Grammar School	Kenthurst	Likely	Major	27
Very High	2A	82	Human Settlement	Special Fire Protection	Annangrove Public School	Kenthurst	Likely	Major	27
Very High	2A	83	Human Settlement	Special Fire Protection	Glenhaven Gardens/Carinya House	Glenhaven	Likely	Major	5
Very High	2A	84	Human Settlement	Special Fire Protection	Living Choice Glenhaven Retirement Village	Glenhaven	Likely	Major	5
Very High	2A	85	Human Settlement	Special Fire Protection	Marian College / St Madeleine's Primary	Glenhaven	Likely	Major	27
Very High	2A	86	Cultural	Non Indigenous	Wisemans Ferry Historic Site	Maroota	Likely	Major	
Very High	2A	87	Economic	Tourist and Recreational	Kiata Country Club	Maroota	Likely	Major	5;10;9;4
Very High	2A	88	Human Settlement	Residential	Baulkham Hills (Sophia Doyle Reserve)	North Rocks	Likely	Major	1;17;30
Very High	2A	89	Human Settlement	Special Fire Protection	Kenthurst Public School	Kenthurst	Likely	Major	27
Very High	2A	90	Human Settlement	Special Fire Protection	Kenthurst Preschool Kindergarten	Kenthurst	Likely	Major	5
Very High	2A	91	Economic	Tourist and Recreational	Billabong Retreat	Kenthurst	Likely	Major	5;4;9;10
Very High	2A	92	Human Settlement	Special Fire Protection	Fern Gully Child Care Centre	North Rocks	Likely	Major	26
Very High	2A	93	Human Settlement	Residential	West Pennant Hills (Excelsior/Bidjigal Reserve Larra to Mill)	North Rocks	Likely	Major	16;17;19;2
Very High	2A	94	Human Settlement	Residential	West Pennant Hills (Excelsior Reserve Willow to Linton)	North Rocks	Likely	Major	1;17
Very High	2A	95	Human Settlement	Residential	West Pennant Hills (Excelsior Reserve Ted Horwood to Candowie)	North Rocks	Likely	Major	1;16;17;18
Very High	2A	96	Human Settlement	Residential	West Pennant Hills (Sanctuary Point to Governor Phillip)	North Rocks	Likely	Major	25;24;17;19
Very High	2A	97	Human Settlement	Residential	Maroota (Haerses)	Maroota	Likely	Major	9;4
Very High	2A	98	Human Settlement	Residential	West Pennant Hills (Excelsior/Bidjigal Reserve Candowie to Munro)	North Rocks	Likely	Major	19;16;17
Very High	2A	99	Human Settlement	Residential	West Pennant Hills (Bidjigal Reserve Bron to Sanctuary Point)	North Rocks	Likely	Major	20;21;23;17
Very High	2A	100	Human Settlement	Residential	West Pennant Hills (Excelsior/Bidjigal Reserve Darcey to Candlebush)	North Rocks	Likely	Major	19;17;16

Appendix 2 Asset Register

Risk	Priority	Map Ref No.	Asset type	Asset sub type	Asset name	Display area	Likelihood	Consequence	Treatment No.
Very High	2A	101	Human Settlement	Residential	West Pennant Hills (Excelsior/Bidjigal Reserve Merelynnne)	North Rocks	Likely	Major	24;19;16;17
Very High	2A	102	Human Settlement	Residential	West Pennant Hills (Richard Webb Reserve)	North Rocks	Likely	Major	1;17
Very High	2A	103	Human Settlement	Residential	West Pennant Hills (Cumberland State Forest)	North Rocks	Likely	Major	28;1;17;15
Very High	2A	104	Human Settlement	Residential	Castle Hill (Fred Caterson Reserve Showground to Lomandra)	Glenhaven	Likely	Major	1;17
Very High	2A	105	Human Settlement	Residential	Castle Hill (Fred Caterson Reserve Galahad to Drawbridge)	Glenhaven	Likely	Major	29;25;17;2
Very High	2A	106	Human Settlement	Residential	Castle Hill (Cameo Place/Fullers Road Reserve Wrights to Arbor Glen)	Glenhaven	Likely	Major	1;25;2;17
Very High	2A	107	Human Settlement	Residential	Castle Hill (Fullers Road/Citadel Crescent Reserve Arbor Glen to Ridgescrop)	Glenhaven	Likely	Major	1;25;2;17
Very High	2A	108	Human Settlement	Residential	Kellyville (Cattai Creek Conservation Area Reserve Roseberry to Jack McNamee)	Glenhaven	Likely	Major	17;25
Very High	2A	109	Human Settlement	Residential	Kellyville (Jack McNamee to Georgia Terrace)	Glenhaven	Likely	Major	1;25;17
Very High	2A	110	Human Settlement	Residential	Kellyville (Cattai Creek Conservation Area Reserve Strathfillan to Braekell)	Glenhaven	Likely	Major	1;17
Very High	2A	111	Human Settlement	Residential	Glenhaven (Glenhaven to Bannerman)	Glenhaven	Likely	Major	4;9
Very High	2A	112	Human Settlement	Residential	Glenhaven (Mills to Glenhaven)	Glenhaven	Likely	Major	4;9
Very High	2A	113	Human Settlement	Residential	Glenhaven (Fullers Road Reserve Adam to Carinda)	Glenhaven	Likely	Major	25;17
Very High	2A	114	Human Settlement	Residential	Glenhaven (Hyde Avenue Reserve Carinda to Araluen)	Glenhaven	Likely	Major	2;25;17
Very High	2A	115	Human Settlement	Residential	Glenhaven (Fullers Road Reserve Delavor to Adam)	Glenhaven	Likely	Major	17
Very High	2A	116	Human Settlement	Residential	Glenhaven (Citadel Crescent Reserve)	Glenhaven	Likely	Major	1;17
Very High	2A	117	Human Settlement	Residential	Glenhaven (Linksley Avenue Reserve)	Glenhaven	Likely	Major	1;17
Very High	2A	118	Human Settlement	Residential	Annangrove (Glenhaven to Colbran)	Kenthurst	Likely	Major	4;9
Very High	2A	119	Human Settlement	Residential	Annangrove(Bannerman to Robson)	Glenhaven	Likely	Major	4;9
Very High	2A	120	Human Settlement	Residential	Glenhaven (Bannerman to Holland)	Glenhaven	Likely	Major	4;9
Very High	2A	121	Human Settlement	Residential	Kenthurst (Holland Road Reserve Bannerman to Edgecliff)	Glenhaven	Likely	Major	4;1;9
Very High	2A	122	Human Settlement	Residential	Dural (Annangrove to Sagars)	Glenhaven	Likely	Major	4;9
Very High	2A	123	Human Settlement	Residential	Glenhaven (Edgecliff to Sagars)	Glenhaven	Likely	Major	4;9
Very High	2A	124	Human Settlement	Residential	Glenhaven (Gilmour to Haven)	Glenhaven	Likely	Major	4;9
Very High	2A	125	Human Settlement	Residential	Dural (Gilmour to Yuruga)	Glenhaven	Likely	Major	4;9
Very High	2A	126	Human Settlement	Residential	Kellyville (Ross to Nest Hill)	Glenhaven	Likely	Major	4;9
Very High	2A	127	Human Settlement	Residential	Rouse Hill (Mile End to Empress)	Kenthurst	Likely	Major	4;9
Very High	2A	128	Human Settlement	Residential	Rouse Hill (Maria Iori Reserve Harvard to Hyatt)	Glenhaven	Likely	Major	1
Very High	2A	129	Human Settlement	Residential	Annangrove (Blind to Amaroo Park)	Kenthurst	Likely	Major	4;9
Very High	2A	130	Human Settlement	Residential	Annangrove (Edwards)	Kenthurst	Likely	Major	4
Very High	2A	131	Human Settlement	Residential	Annangrove (Annangrove to Langlands)	Kenthurst	Likely	Major	4;9
Very High	2A	132	Human Settlement	Residential	Annangrove (Langlands to Stringer)	Kenthurst	Likely	Major	4;9
Very High	2A	133	Human Settlement	Residential	Annangrove (Annangrove to Kingcott)	Kenthurst	Likely	Major	4;9
Very High	2A	134	Human Settlement	Residential	Annangrove (Annangrove to Colbran)	Kenthurst	Likely	Major	4;9
Very High	2A	135	Human Settlement	Residential	Kellyville (Bruce to Withers)	Kenthurst	Likely	Major	4;9
Very High	2A	136	Human Settlement	Residential	Kellyville (Samantha Riley to Withers)	Kenthurst	Likely	Major	9;4
Very High	2A	137	Human Settlement	Residential	Dural (Pellitt to Derriwong)	Kenthurst	Likely	Major	4
Very High	2A	138	Human Settlement	Residential	Dural (Derriwong to Kenthurst)	Kenthurst	Likely	Major	4;9
Very High	2A	139	Human Settlement	Residential	Dural (Langford to Kenthurst)	Kenthurst	Likely	Major	4;9;31
Very High	2A	140	Human Settlement	Residential	Dural (Nelson to Wyoming)	Kenthurst	Likely	Major	4;1
Very High	2A	141	Human Settlement	Residential	Dural (Wyoming to Winnunga)	Kenthurst	Likely	Major	4;9
Very High	2A	142	Human Settlement	Residential	Dural (Dobell to Glenroy)	Kenthurst	Likely	Major	4;9
Very High	2A	143	Human Settlement	Residential	Middle Dural (Glenroy to Roughley)	Kenthurst	Likely	Major	4;9;1
Very High	2A	144	Human Settlement	Residential	Middle Dural (Cranstons to Pinus)	Kenthurst	Likely	Major	4
Very High	2A	145	Human Settlement	Residential	Cattai (Wheeny Creek to Wisemans Ferry)	Maroota	Likely	Major	4;9;7
Very High	2A	146	Human Settlement	Residential	South Maroota (Charcoal to O'Briens)	Maroota	Likely	Major	4;9;7
Very High	2A	147	Human Settlement	Residential	Sackville North (Sackville Ferry to Mitchells)	Maroota	Likely	Major	4;9
Very High	2A	148	Human Settlement	Residential	Sackville North (Sackville Ferry to Manning)	Maroota	Likely	Major	9;4
Very High	2A	149	Human Settlement	Residential	Sackville North (Chapel Hill to Sackville Ferry)	Maroota	Likely	Major	4
Very High	2A	150	Human Settlement	Residential	Sackville North (Moss Ridge to River)	Maroota	Likely	Major	9;4

Appendix 2 Asset Register

Risk	Priority	Map Ref No.	Asset type	Asset sub type	Asset name	Display area	Likelihood	Consequence	Treatment No.
Very High	2A	151	Human Settlement	Special Fire Protection	Forgotten Valley Mobile Preschool	Maroota	Likely	Major	5
Very High	2A	152	Economic	Infrastructure	Substation (Halcrows Rd Cattai)	Kenthurst	Likely	Major	32
Very High	2A	153	Economic	Infrastructure	Substation (5016 Old Northern Road Maroota)	Maroota	Likely	Major	32
Very High	2A	154	Human Settlement	Residential	Castle Hill (Heritage Park)	Glenhaven	Likely	Major	1;17
Very High	2A	155	Human Settlement	Residential	West Pennant Hills (Richard Webb/Bidjigal Reserve Range to Westmore)	North Rocks	Likely	Major	17;25;1;24
Very High	2A	156	Human Settlement	Residential	West Pennant Hills (The Glade)	North Rocks	Likely	Major	14;15;17
Very High	2A	157	Cultural	Non Indigenous	Sackville Cemetery	Maroota	Likely	Major	
Very High	2A	158	Economic	Agricultural	Portelli's Cottage Farm	Maroota	Likely	Major	9
Very High	2A	159	Economic	Agricultural	Melinda Hart Equestrian	Kenthurst	Likely	Major	7;9
Very High	2A	160	Economic	Agricultural	Weinerts Performance Horses	Kenthurst	Likely	Major	9;8
Very High	2A	161	Human Settlement	Special Fire Protection	Brewongle Environment & Education Centre	Maroota	Likely	Major	5
Very High	2A	0	Economic	Infrastructure	Endeavour Energy Network	Glenhaven;Kenthurst;Maroota;North Rocks	Likely	Major	34
Very High	2A	0	Economic	Infrastructure	Telstra Infrastructure/Communications Towers	Glenhaven;Kenthurst;Maroota;North Rocks	Likely	Major	33
Very High	2A	0	Economic	Infrastructure	Transgrid Transmision Lines	Kenthurst;Maroota	Likely	Major	22
High	3A	162	Human Settlement	Special Fire Protection	Samuel Gilbert Public School	Glenhaven	Likely	Moderate	
High	3A	163	Human Settlement	Special Fire Protection	Lady of Grace Aged Care Facility	Glenhaven	Likely	Moderate	
High	3A	164	Human Settlement	Special Fire Protection	Lorien Novalis School	Glenhaven	Likely	Moderate	
High	3A	165	Economic	Tourist and Recreational	Riverside Oaks	Maroota	Likely	Moderate	
High	3A	166	Economic	Commercial	Mirvac Corporate Facility	North Rocks	Likely	Moderate	
High	3A	167	Cultural	Non Indigenous	Cattai NP Homesteads	Maroota	Likely	Moderate	
High	3A	168	Economic	Commercial	Cumberland State Forest - Corporate Facility	North Rocks	Likely	Moderate	
High	3A	169	Economic	Agricultural	Arborglen Nursery	Kenthurst	Likely	Moderate	
High	3A	170	Economic	Infrastructure	Rouse Hill Recycled Water Plant	Kenthurst	Likely	Moderate	
High	3A	171	Economic	Agricultural	Maguires Road Bird Nursery	Kenthurst	Likely	Moderate	
High	3A	172	Economic	Commercial	Knightsbridge Shopping Centre	Glenhaven	Likely	Moderate	
High	3A	173	Economic	Infrastructure	Castle Hill Sewerage Treatment Plant	Glenhaven	Likely	Moderate	
High	3A	174	Human Settlement	Special Fire Protection	Glenhaven Public School	Glenhaven	Likely	Moderate	
High	3A	175	Economic	Tourist and Recreational	Sydney Colonial Muzzle Loading Club	Maroota	Likely	Moderate	
High	3A	176	Human Settlement	Special Fire Protection	Mountain View Retreat Retirement Village	Glenhaven	Likely	Moderate	
High	3A	177	Human Settlement	Special Fire Protection	Malek Fahd Islamic School	Glenhaven	Likely	Moderate	
High	3A	178	Human Settlement	Special Fire Protection	Rouse Hill Preschool Kindergarten	Kenthurst	Likely	Moderate	
High	3A	179	Human Settlement	Special Fire Protection	Muddy Boots Preschool	Glenhaven	Likely	Moderate	
High	3A	180	Human Settlement	Special Fire Protection	Annangrove Pre-School Kindergarten	Kenthurst	Likely	Moderate	
High	3A	181	Human Settlement	Special Fire Protection	Dural Public School	Kenthurst	Likely	Moderate	
High	3A	182	Human Settlement	Special Fire Protection	Kenthurst Early Learning Centre	Kenthurst	Likely	Moderate	
High	3A	183	Human Settlement	Special Fire Protection	Kentgrove Village (Uniting Care)	Kenthurst	Likely	Moderate	
High	3A	184	Economic	Commercial	Kenthurst Village Shopping Centre	Kenthurst	Likely	Moderate	
High	3A	185	Economic	Commercial	Glenorie Shopping Village	Kenthurst	Likely	Moderate	
High	3A	186	Human Settlement	Special Fire Protection	Wisemans Ferry Public School	Maroota	Likely	Moderate	
High	3A	187	Human Settlement	Special Fire Protection	Maroota Public School	Maroota	Likely	Moderate	
High	3A	188	Human Settlement	Special Fire Protection	Glenorie Public School	Maroota	Likely	Moderate	
High	3A	189	Human Settlement	Special Fire Protection	Glenorie Preschool	Maroota	Likely	Moderate	
High	3A	190	Economic	Tourist and Recreational	Tobruk Sheep Station	Maroota	Likely	Moderate	
High	3A	191	Human Settlement	Residential	Rouse Hill (Withers to Commercial)	Glenhaven	Likely	Moderate	
High	3A	192	Economic	Commercial	Cumberland State Forest - Commercial Facility	North Rocks	Likely	Moderate	
High	3A	193	Human Settlement	Residential	Middle Dural (Glenroy to Cranstons)	Kenthurst	Likely	Moderate	
High	3A	194	Human Settlement	Residential	Glenhaven (Old Glenhaven to Woodburn Place)	Glenhaven	Likely	Moderate	
High	3A	195	Human Settlement	Residential	Kellyville (Withers to Milford)	Glenhaven	Likely	Moderate	
High	3A	196	Human Settlement	Residential	Kellyville (Regent Honeyeater to Ironbark Ridge)	Glenhaven	Likely	Moderate	
High	3A	197	Human Settlement	Residential	Annangrove (Annangrove to Hillclimb)	Kenthurst	Likely	Moderate	

Appendix 2 Asset Register

Risk	Priority	Map Ref No.	Asset type	Asset sub type	Asset name	Display area	Likelihood	Consequence	Treatment No.
High	3A	198	Human Settlement	Residential	Nelson (Birds to Nelson)	Kenthurst	Likely	Moderate	
High	3A	199	Human Settlement	Residential	Kenthurst (Volunteer)	Kenthurst	Likely	Moderate	
High	3A	200	Human Settlement	Residential	Dural (Davey to Wyoming)	Kenthurst	Likely	Moderate	
High	3A	201	Human Settlement	Residential	Dural (Cranstons)	Kenthurst	Likely	Moderate	
High	3A	202	Human Settlement	Residential	Kenthurst (Fuggles to Seville)	Kenthurst	Likely	Moderate	
High	3A	203	Human Settlement	Residential	Annangrove (Amanda to Lillian)	Kenthurst	Likely	Moderate	
High	3A	204	Human Settlement	Residential	Maraylya (Maguires to Boundary)	Kenthurst	Likely	Moderate	
High	3A	205	Human Settlement	Residential	Maraylya (Maguires)	Kenthurst	Likely	Moderate	
High	3A	206	Human Settlement	Residential	Maraylya (Maguires to Janpieter)	Kenthurst	Likely	Moderate	
High	3A	207	Human Settlement	Residential	Cattai (Old Post Office to Aristida)	Maroota	Likely	Moderate	
High	3A	208	Human Settlement	Residential	Cattai (Cheesemans to O'Briens)	Maroota	Likely	Moderate	
High	3A	209	Human Settlement	Residential	Sackville North (Pages Wharf to Mud Island)	Maroota	Likely	Moderate	
High	3A	210	Human Settlement	Residential	Sackville North (Mitchells to Everingham North)	Maroota	Likely	Moderate	
High	3A	211	Human Settlement	Residential	Sackville North (Ulinbawn)	Maroota	Likely	Moderate	
High	3A	212	Economic	Infrastructure	Sackville North Rural Fire Station	Maroota	Likely	Moderate	
High	3A	213	Human Settlement	Residential	Sackvile North (River to Tuff Hill)	Maroota	Likely	Moderate	
High	3A	214	Human Settlement	Residential	Lower Portland (Cornelia)	Maroota	Likely	Moderate	
High	3A	215	Human Settlement	Residential	Lower Portland (St George)	Maroota	Likely	Moderate	
High	3A	216	Human Settlement	Residential	Leets Vale (Douglas Creek)	Maroota	Likely	Moderate	
High	3A	217	Human Settlement	Residential	Wisemans Ferry (Village)	Maroota	Likely	Moderate	
High	3A	218	Human Settlement	Residential	Lower Portland (Cliftonville to River)	Maroota	Likely	Moderate	
High	3A	219	Human Settlement	Residential	Lower Portland (River to Quasimodo)	Maroota	Likely	Moderate	
High	3A	220	Human Settlement	Residential	Maroota (Old Telegraph to Wisemans Ferry)	Maroota	Likely	Moderate	
High	3A	221	Human Settlement	Residential	Maroota (Roberts to Maroota Tracks)	Maroota	Likely	Moderate	
High	3A	222	Economic	Tourist and Recreational	Leetsvale Caravan Park	Maroota	Likely	Moderate	
High	3A	223	Economic	Tourist and Recreational	Cliftonville Lodge Resort	Maroota	Likely	Moderate	
High	3A	224	Economic	Tourist and Recreational	Torrens Water Ski Gardens & Caravan Park	Maroota	Likely	Moderate	
High	3A	225	Economic	Tourist and Recreational	Walkers Beach Sports Club	Maroota	Likely	Moderate	
High	3A	226	Economic	Tourist and Recreational	Black Diamond Wakeboarding School	Maroota	Likely	Moderate	
High	3A	227	Economic	Tourist and Recreational	Carinya Ski Ranch	Maroota	Likely	Moderate	
High	3A	228	Economic	Tourist and Recreational	Koveda	Maroota	Likely	Moderate	
High	3A	229	Economic	Tourist and Recreational	NSW Ski Gardens	Maroota	Likely	Moderate	
High	3A	230	Economic	Tourist and Recreational	Riviera Ski Gardens	Maroota	Likely	Moderate	
High	3A	231	Economic	Tourist and Recreational	Newalls Ski Park	Maroota	Likely	Moderate	
High	3A	232	Economic	Tourist and Recreational	DML Gardens	Maroota	Likely	Moderate	
High	3A	233	Economic	Tourist and Recreational	St George Caravan Park	Maroota	Likely	Moderate	
High	3A	234	Economic	Tourist and Recreational	Lower Portland Nurseries	Maroota	Likely	Moderate	
High	3A	235	Economic	Tourist and Recreational	Ferndale Country Retreat	Maroota	Likely	Moderate	
High	3A	236	Economic	Tourist and Recreational	Cornelia Caravan Park	Maroota	Likely	Moderate	
High	3A	237	Economic	Tourist and Recreational	Dargle Ski Gardens	Maroota	Likely	Moderate	
High	3A	238	Economic	Tourist and Recreational	Ulinbawn Ski Park	Maroota	Likely	Moderate	
High	3A	239	Economic	Tourist and Recreational	Caradon Ski Ranch	Maroota	Likely	Moderate	
High	3A	240	Economic	Tourist and Recreational	Pacific Park Ski Park	Maroota	Likely	Moderate	
High	3A	241	Economic	Infrastructure	Maroota South RFS Station	Maroota	Likely	Moderate	
High	3A	242	Human Settlement	Special Fire Protection	Early Childhood Education Centre	Kenthurst	Likely	Moderate	
High	3A	243	Human Settlement	Special Fire Protection	Endeavour Early Education	Kenthurst	Likely	Moderate	
High	3A	244	Human Settlement	Special Fire Protection	Arcare Glenhaven Aged Care	Glenhaven	Likely	Moderate	
High	3A	245	Economic	Infrastructure	Glenorie Rural Fire Station	Kenthurst	Likely	Moderate	
High	3A	246	Human Settlement	Residential	Wisemans Ferry (River)	Maroota	Likely	Moderate	
High	3A	247	Human Settlement	Residential	Leets Vale (Lower to Upper Half Moon)	Maroota	Likely	Moderate	

Appendix 2 Asset Register

Risk	Priority	Map Ref No.	Asset type	Asset sub type	Asset name	Display area	Likelihood	Consequence	Treatment No.
High	3A	248	Human Settlement	Residential	South Maroota (Pacific Park)	Maroota	Likely	Moderate	
High	3A	249	Human Settlement	Special Fire Protection	Oak Tree Dural	Glenhaven	Likely	Moderate	
High	3A	250	Human Settlement	Residential	Maroota (Roberts to Old Telegraph)	Maroota	Likely	Moderate	
High	3A	251	Economic	Infrastructure	Hillside Rural Fire Brigade	Kenthurst	Likely	Moderate	
High	3A	252	Economic	Infrastructure	Kenthurst Rural Fire Brigade	Kenthurst	Likely	Moderate	
High	3A	253	Economic	Infrastructure	Annangrove Rural Fire Brigade	Kenthurst	Likely	Moderate	
High	3A	254	Cultural	Non Indigenous	Stone Dairy and Fig Tree	Maroota	Likely	Moderate	
High	3A	255	Cultural	Non Indigenous	Berry Hill House	Maroota	Likely	Moderate	
High	3A	256	Cultural	Non Indigenous	Slab Barn	Maroota	Likely	Moderate	
High	3A	257	Cultural	Non Indigenous	The Parsonage, Uniting Church & Cemetery	Maroota	Likely	Moderate	
High	3A	258	Economic	Tourist and Recreational	Northern Districts Pistol Club	Kenthurst	Likely	Moderate	
High	3A	259	Economic	Agricultural	Tropical Plant Rentals	Kenthurst	Likely	Moderate	
High	3A	260	Economic	Agricultural	Camellia Grove Nursery	Kenthurst	Likely	Moderate	
High	3A	261	Economic	Agricultural	Golden Gates Nursery	Kenthurst	Likely	Moderate	
High	3A	262	Economic	Agricultural	Sydney's Plant Market	Kenthurst	Likely	Moderate	
High	3A	263	Economic	Agricultural	Naturally Creative Gardens	Kenthurst	Likely	Moderate	
High	3A	264	Economic	Agricultural	Greensmiths Wholesale Nursery	Kenthurst	Likely	Moderate	
High	3A	265	Economic	Agricultural	Padre Pio Bonsai Nursery	Kenthurst	Likely	Moderate	
High	3A	266	Economic	Agricultural	Kenthurst Nursery	Kenthurst	Likely	Moderate	
High	3A	267	Economic	Agricultural	Dural Wholesale Nursery	Kenthurst	Likely	Moderate	
High	3A	268	Economic	Agricultural	Trueleaf Nurseries	Kenthurst	Likely	Moderate	
High	3A	269	Economic	Agricultural	Amanzi Wholesale Nursery	Kenthurst	Likely	Moderate	
High	3A	270	Economic	Agricultural	Ray Nesci Bonsai Nursery	Glenhaven	Likely	Moderate	
High	3A	271	Economic	Tourist and Recreational	Kenthurst Tennis Centre	Kenthurst	Likely	Moderate	
High	3A	272	Economic	Agricultural	Exotic Nurseries & Landscaping	Kenthurst	Likely	Moderate	
High	3A	273	Economic	Agricultural	House of Hedges	Kenthurst	Likely	Moderate	
High	3A	274	Economic	Agricultural	Whiteman's Orchids	Kenthurst	Likely	Moderate	
High	3A	275	Economic	Agricultural	Hedged	Kenthurst	Likely	Moderate	
High	3A	276	Economic	Agricultural	The Orchid Mart	Kenthurst	Likely	Moderate	
High	3A	277	Economic	Agricultural	Basha Produce	Maroota	Likely	Moderate	
High	3A	278	Economic	Agricultural	AT Eyles & Sons Pty	Kenthurst	Likely	Moderate	
High	3A	279	Economic	Agricultural	Garry Chatman's Corn Farm	Maroota	Likely	Moderate	
High	3A	280	Economic	Agricultural	Talai Estate Winery	Maroota	Likely	Moderate	
High	3A	281	Economic	Agricultural	Cletindale Nursery	Maroota	Likely	Moderate	
High	3A	282	Economic	Agricultural	Citris Farm	Maroota	Likely	Moderate	
High	3A	283	Economic	Agricultural	Asheden Equestrian Centre	Maroota	Likely	Moderate	
High	3A	284	Economic	Mines	Australian Sandstone Merchant	Maroota	Likely	Moderate	
High	3A	285	Economic	Mines	Sandstone Sales	Kenthurst	Likely	Moderate	
High	3A	286	Economic	Agricultural	Woolpaca Farm	Kenthurst	Likely	Moderate	
High	3A	287	Economic	Commercial	T. Sakkal Group	Kenthurst	Likely	Moderate	
High	3A	288	Economic	Agricultural	Heidi Scott Equestrian	Kenthurst	Likely	Moderate	
High	3A	289	Economic	Agricultural	Val D'argent Warmblood Horse Stud	Kenthurst	Likely	Moderate	
High	3A	290	Economic	Agricultural	Golden Ridge Animal Farm	Kenthurst	Likely	Moderate	
High	3A	291	Economic	Agricultural	Simeon Stud Farm	Kenthurst	Likely	Moderate	
High	3A	292	Economic	Agricultural	Eclipse Alpacas	Kenthurst	Likely	Moderate	
High	3A	293	Economic	Agricultural	Undercover Landscapes	Glenhaven	Likely	Moderate	
High	3A	294	Economic	Agricultural	Polito Flowers	Kenthurst	Likely	Moderate	
High	3A	295	Economic	Agricultural	Charlie Camelleri	Maroota	Likely	Moderate	
High	3A	296	Economic	Mines	Maroota Mining	Maroota	Likely	Moderate	
High	3A	297	Human Settlement	Residential	West Pennant Hills (Colbarra Reserve)	North Rocks	Likely	Moderate	

Appendix 2 Asset Register

Risk	Priority	Map Ref No.	Asset type	Asset sub type	Asset name	Display area	Likelihood	Consequence	Treatment No.
High	3A	298	Human Settlement	Special Fire Protection	The Childrens Preschool	Glenhaven	Likely	Moderate	
High	3C	299	Human Settlement	Residential	Beaumont Hills (Sanctuary to Samantha Riley)	Glenhaven	Unlikely	Catastrophic	
Medium	4	300	Economic	Commercial	Annangrove Shops	Kenthurst	Likely	Minor	
Medium	4	301	Economic	Commercial	Glenhaven Shopping Centre	Glenhaven	Likely	Minor	
Medium	4	302	Human Settlement	Special Fire Protection	Ironbark Ridge Public School	Glenhaven	Unlikely	Major	
Medium	4	303	Human Settlement	Special Fire Protection	Rouse Hill High School	Glenhaven	Unlikely	Major	
Medium	4	304	Economic	Tourist and Recreational	Cattai NP Infrastructure	Maroota	Likely	Minor	
Medium	4	305	Human Settlement	Special Fire Protection	Our Lady of the Angels Primary	Glenhaven	Unlikely	Major	
Medium	4	306	Economic	Tourist and Recreational	Whitesands Resort	Maroota	Likely	Minor	
Medium	4	307	Economic	Infrastructure	Substation (Jones Road Kenthurst)	Kenthurst	Unlikely	Major	
Medium	4	308	Economic	Infrastructure	Substation (Aiken Road West Pennant Hills)	North Rocks	Likely	Minor	
Medium	4	309	Economic	Infrastructure	Substation (Post Office Road Glenorie)	Kenthurst	Unlikely	Major	
Medium	4	310	Economic	Agricultural	Tomalong Christmas Tree Farm	Kenthurst	Likely	Minor	
Medium	4	311	Economic	Agricultural	Orchid Land Nursery	Kenthurst	Likely	Minor	
Medium	4	312	Economic	Agricultural	Foxwood Nursery	Kenthurst	Likely	Minor	
Medium	4	313	Human Settlement	Special Fire Protection	Dooral Early Learning Centre	Kenthurst	Unlikely	Major	
Medium	4	314	Economic	Infrastructure	FRNSW CFU	North Rocks	Likely	Minor	35
Medium	4	315	Economic	Infrastructure	FRNSW CFU	North Rocks	Likely	Minor	35
Medium	4	316	Economic	Infrastructure	FRNSW CFU	North Rocks	Likely	Minor	35
Medium	4	317	Economic	Infrastructure	FRNSW CFU	North Rocks	Likely	Minor	35
Medium	4	318	Economic	Infrastructure	FRNSW CFU	North Rocks	Likely	Minor	35
Low	NA	319	Economic	Infrastructure	Hawkesbury River Ferries	Maroota	Unlikely	Moderate	
Low	NA	320	Human Settlement	Other	South Maroota Community Centre Building NSP	Maroota	Unlikely	Moderate	36
Low	NA	321	Human Settlement	Other	Maroota Public School Building NSP	Maroota	Unlikely	Moderate	37
Low	NA	322	Human Settlement	Other	Cliftonville Lodge Resort Kiosk Building NSP	Maroota	Unlikely	Moderate	38
Low	NA	323	Human Settlement	Other	Wisemans Ferry Park Open Space NSP	Maroota	Unlikely	Moderate	36
Low	NA	324	Human Settlement	Other	Ulinbawn Water Ski Park Open Space NSP	Maroota	Unlikely	Moderate	38
Low	NA	325	Human Settlement	Other	Dargle Ski Park Open Space NSP	Maroota	Unlikely	Moderate	38
Low	NA	326	Human Settlement	Other	Les Shore Oval Clubhouse Building NSP	Kenthurst	Unlikely	Moderate	36
Low	NA	327	Human Settlement	Other	Kenthurst Uniting Church Building NSP	Kenthurst	Unlikely	Moderate	38
Low	NA	328	Human Settlement	Other	Dural Mall Open Space NSP	Glenhaven	Unlikely	Moderate	38
Low	NA	329	Human Settlement	Other	Glenhaven Community Centre Building NSP	Glenhaven	Unlikely	Moderate	36
Low	NA	330	Human Settlement	Other	Dural Country Club Building NSP	Kenthurst	Unlikely	Moderate	38
Low	NA	331	Human Settlement	Other	Castle Hill Showground Open Space NSP	Glenhaven	Unlikely	Moderate	36
Low	NA	332	Human Settlement	Other	Bernie Mullane Sporting Complex Car Park Open Space NSP	Glenhaven	Unlikely	Moderate	36
Low	NA	333	Human Settlement	Other	The Hills Centenary Park Open Space NSP	Glenhaven	Unlikely	Moderate	36
Low	NA	334	Human Settlement	Other	Hills Community Care Building NSP	North Rocks	Unlikely	Moderate	38
Low	NA	335	Human Settlement	Other	George Thornton Reserve Open Space NSP	North Rocks	Unlikely	Moderate	36
Low	NA	336	Human Settlement	Special Fire Protection	Ellerman Long Day Care Centre	Kenthurst	Unlikely	Moderate	
Low	NA	337	Economic	Mines	Dixon Sand (Penrith) Pty Ltd	Maroota	Unlikely	Moderate	
Low	NA	338	Economic	Mines	PF Formation Pty Ltd	Maroota	Unlikely	Moderate	
Low	NA	339	Economic	Infrastructure	Wisemans Ferry Rural Fire Brigade		Unlikely	Moderate	
Low	NA	340	Economic	Infrastructure	Maroota Rural Fire Brigade	Maroota	Unlikely	Moderate	
Low	NA	341	Economic	Infrastructure	Middle Dural Rural Fire Brigade		Unlikely	Moderate	
Low	NA	342	Economic	Infrastructure	Box Hill - Nelson Rural Fire Brigade	Kenthurst	Unlikely	Moderate	
Low	NA	343	Economic	Infrastructure	The Hills District Fire Control Centre	Glenhaven	Unlikely	Moderate	
Low	NA	344	Economic	Infrastructure	Round Corner Rural Fire Brigade	Glenhaven	Unlikely	Moderate	
Low	NA	345	Economic	Infrastructure	Glenhaven Rural Fire Brigade	Glenhaven	Unlikely	Moderate	
Low	NA	346	Economic	Infrastructure	Kellyville Rural Fire Brigade	Glenhaven	Unlikely	Moderate	
Low	NA	347	Economic	Infrastructure	Rouse Hill Rural Fire Brigade	Kenthurst	Unlikely	Moderate	

Appendix 2 Asset Register

Risk	Priority	Map Ref No.	Asset type	Asset sub type	Asset name	Display area	Likelihood	Consequence	Treatment No.
Low	NA	348	Economic	Infrastructure	North Rocks Rural Fire Brigade	North Rocks	Unlikely	Moderate	
Low	NA	349	Cultural	Non Indigenous	Church	Maroota	Unlikely	Moderate	
Low	NA	350	Cultural	Non Indigenous	827 - 829 River Road	Maroota	Unlikely	Moderate	
Low	NA	351	Cultural	Non Indigenous	Browns Cemetery	Maroota	Unlikely	Moderate	
Low	NA	352	Cultural	Non Indigenous	"Peacocks"	Maroota	Unlikely	Minor	
Low	NA	353	Cultural	Non Indigenous	Kelso Park	Maroota	Unlikely	Moderate	
Low	NA	354	Economic	Agricultural	Cabbage Tree Nursery	Kenthurst	Unlikely	Moderate	
Low	NA	355	Economic	Agricultural	Nati Roses	Kenthurst	Unlikely	Moderate	

Appendix 3 Treatment Register

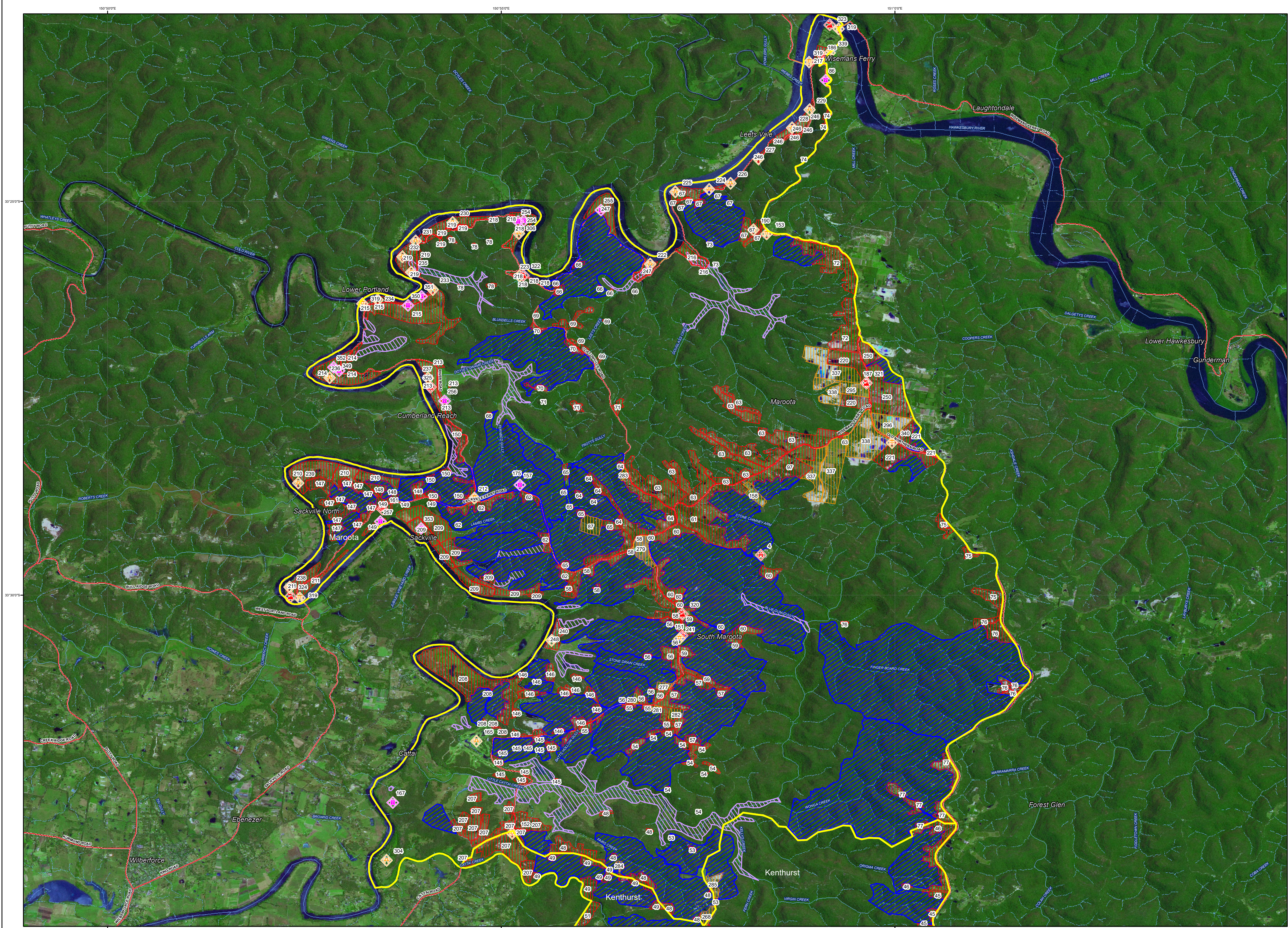
Priority	Treatment Ref No	Strategy	Action	Comment	Responsible Agency	Other Responsible Agency	Support Agency	Other Support Agency	Scheduled Action Date	Asset Ref Nos
1B	1	Hazard Reduction	Maintain APZ	Inspect APZ and Maintain as required.	LGA				1920;2021;2122;2223;2324	24;140;143;44;103;104;106;107;10;116;109;88;94;102;5;95;117;121;128;74;155;154
1B	2	Preparedness	Inspect and Maintain Fire Trail	Inspect and maintain existing fire trail as per The Hills BFMC FAFT Plan.	LGA				1920;2021;2122;2223;2324	105;106;107;114;93;9;11;13;12
1B	3	Hazard Reduction	Undertake Hazard Reduction Burning	Implement the Hills BFMC Prescribed Burning Works Plan to maintain fuel loads to prescription (5-10 t/ha).	RFS				1920;2021;2122;2223;2324	54
1B	4	Community Education	Conduct Community Engagement Activity	Target interface areas for bush fire community engagement program.	RFS				1920;2021;2122;2223;2324	148;25;26;27;28;29;23;31;144;33;35;36;37;38;30;141;19;20;137;138;139;24;140;41;142;21;22;143;60;55;145;146;56;57;39;59;61;62;63;147;58;49;16;42;43;44;45;46;54;48;53;50;51;52;40;47;111;112;18;5;97;118;14;7;8;9;10;11;13;132;15;133;134;135;136;34;12;127;119;120;121;122;123;124;126;6;129;130;131;17;125;77;74;75;76;149;78;32;64;65;150;66;73;68;69;70;71;72;67;87;91
1B	5	Property Planning	Develop/Implement Bushfire Emergency Procedures	Assist vulnerable developments to prepare bushfire emergency procedures for their facilities and occupants. Procedures will determine their evacuation and/or shelter in place options.	Private		RFS		1920;2021;2122;2223;2324	161;3;4;1;79;83;2;90;151;84;80;87;91
1B	6	Hazard Reduction	Undertake Hazard Reduction Burning	Undertake Prescribed Burning in accordance with The Hills Shire Council Biobanking Agreement.	RFS		LGA		1920;2021;2122;2223;2324	25;5
1B	7	Preparedness	Inspect and Maintain Fire Trail	Inspect and maintain existing fire trail as per The Hills BFMC FAFT Plan.	RFS				1920;2021;2122;2223;2324	36;19;20;55;145;146;39;49;42;54;18;17;159
1B	8	Preparedness	Inspect and Maintain Fire Trail	Inspect and maintain existing fire trail as per The Hills BFMC FAFT Plan.	DPI				1920;2021;2122;2223;2324	25;26;38;54;50;52;34;160
1B	9	Hazard Reduction	Undertake Hazard Reduction Burning	Implement the Hills BFMC Prescribed Burning Works Plan to maintain fuel loads to prescription (5-10 t/ha).	RFS				1920;2021;2122;2223;2324	148;27;28;29;23;31;33;37;38;30;141;19;20;138;139;24;41;142;21;22;143;60;55;145;146;56;57;39;59;61;62;147;58;49;16;42;44;45;46;48;53;50;52;40;47;111;112;18;97;118;14;7;8;9;10;11;13;132;15;133;134;135;136;34;12;127;119;120;121;122;123;124;126;6;129;131;17;125;77;76;32;64;65;150;66;73;68;70;71;72;67;158;159;160;87;91
1B	10	Preparedness	Inspect and Maintain Fire Trail	Inspect and maintain existing fire trail as per The Hills BFMC FAFT Plan.	RFS;DPI				1920;2021;2122;2223;2324	29;23;31;30;24;41;60;57;59;62;63;44;45;46;48;53;47;77;78;32;64;65;73;67;87;91
1B	11	Preparedness	Inspect and Maintain Fire Trail	Inspect and maintain existing fire trail as per The Hills BFMC FAFT Plan.	LGA;RFS;DPI				1920;2021;2122;2223;2324	27;75;76;66;69;70;71
1B	12	Preparedness	Inspect and Maintain Fire Trail	Inspect and maintain existing fire trail as per The Hills BFMC FAFT Plan.	LGA;RFS				1920;2021;2122;2223;2324	35;58;16;5
1B	13	Preparedness	Inspect and Maintain Fire Trail	Inspect and maintain existing fire trail as per The Hills BFMC FAFT Plan.	LGA;NPWS;RFS;DPI				1920;2021;2122;2223;2324	56

Appendix 3 Treatment Register

Priority	Treatment Ref No	Strategy	Action	Comment	Responsible Agency	Other Responsible Agency	Support Agency	Other Support Agency	Scheduled Action Date	Asset Ref Nos
2A	14	Hazard Reduction	Maintain APZ	Inspect APZ and Maintain as required.	Private				1920;2021;2122;2223;2324	156
2A	15	Preparedness	Inspect and Maintain Fire Trail	Inspect and maintain existing fire trail as per The Hills BFMC FAFT Plan.	FCNSW				1920;2021;2122;2223;2324	103;156
2A	16	Hazard Reduction	Undertake Hazard Reduction Burning	Implement the Hills BFMC Prescribed Burning Works Plan to maintain fuel loads to prescription (5-10 t/ha).	FRNSW		LGA;Other	Bidjigal Reserve Trust Board	1920;2021;2122;2223;2324	100;93;101;98;95
2A	17	Community Education	Conduct Community Engagement Activity	Target interface areas for bush fire community engagement program.	FRNSW				1920;2021;2122;2223;2324	103;104;105;106;107;108;110;100;113;114;115;116;109;88;96;156;93;94;102;101;98;99;95;117;155;154
2A	18	Preparedness	Inspect and Maintain Fire Trail	Inspect and maintain existing fire trail as per The Hills BFMC FAFT Plan.	LGA		FRNSW;RFS		1920;2021;2122;2223;2324	95
2A	19	Hazard Reduction	Maintain APZ	Inspect APZ and Maintain as required.	LGA;DPI;Other	Bidjigal Reserve Trust Board			1920;2021;2122;2223;2324	100;96;93;101;98
2A	20	Hazard Reduction	Maintain APZ	Inspect APZ and Maintain as required.	DPI;Other	Bidjigal Reserve Trust Board			1920;2021;2122;2223;2324	99
2A	21	Hazard Reduction	Undertake Hazard Reduction Burning	Implement the Hills BFMC Prescribed Burning Works Plan to maintain fuel loads to prescription (<5t/ha).	FRNSW		Other	Bidjigal Reserve Trust Board	1920;2021;2122;2223;2324	99
2A	22	Hazard Reduction	Undertake Vegetation Maintenance	Implement vegetation maintenance as per HV Network Management Plan.	Other	TransGrid			1920;2021;2122;2223;2324	0
2A	23	Preparedness	Inspect and Maintain Fire Trail	Inspect and maintain existing fire trail as per The Hills BFMC FAFT Plan.	DPI;Other	Bidjigal Reserve Trust Board			1920;2021;2122;2223;2324	99
2A	24	Preparedness	Inspect and Maintain Fire Trail	Inspect and maintain existing fire trail as per The Hills BFMC FAFT Plan.	LGA;DPI;Other	Bidjigal Reserve Trust Board			1920;2021;2122;2223;2324	96;101;155
2A	25	Hazard Reduction	Undertake Hazard Reduction Burning	Implement the Hills BFMC Prescribed Burning Works Plan to maintain fuel loads to prescription (5-10 t/ha).	FRNSW		LGA		1920;2021;2122;2223;2324	105;106;107;108;113;114;109;96;155
2A	26	Property Planning	Develop/Implement Bushfire Emergency Procedures	Assist vulnerable developments to prepare bushfire emergency procedures for their facilities and occupants. Procedures will determine their evacuation and/or shelter in place options.	Private		FRNSW		1920;2021;2122;2223;2324	92
2A	27	Property Planning	Develop/Implemet Bushfire Emergency Procedures	Assist vulnerable developments to prepare bushfire emergency procedures for their facilities and occupants. Procedures will determine their evacuation and/or shelter in place options.	Other	NSW Department of Education	RFS		1920;2021;2122;2223;2324	85;81;82;89
2A	28	Hazard Reduction	Undertake Hazard Reduction Burning	Implement the Hills BFMC Prescribed Burning Works Plan to maintain fuel loads to prescription (5-10 t/ha).	FCNSW				1920;2021;2122;2223;2324	103
2A	29	Hazard Reduction	Maintain APZ	Inspect APZ and Maintain as required.	LGA;Other	Sydney Water			1920;2021;2122;2223;2324	105
2A	30	Hazard Reduction	Undertake Hazard Reduction Burning	Undertake Prescribed Burning in accordance with The Hills Shire Council Biobanking Agreement.	LGA		FRNSW		1920;2021;2122;2223;2324	88
2A	31	Hazard Reduction	Maintain APZ	Inspect APZ and Maintain as required	DPI				1920;2021;2122;2223;2324	139
2A	32	Hazard Reduction	Maintain APZ	Inspect APZ and maintain as required	Other	TransGrid			1920;2021;2122;2223;2324	153;152

Appendix 3 Treatment Register

Priority	Treatment Ref No	Strategy	Action	Comment	Responsible Agency	Other Responsible Agency	Support Agency	Other Support Agency	Scheduled Action Date	Asset Ref Nos
2A	33	Hazard Reduction	Maintain APZ	Inspect and maintain as required.	Other	Telstra			1920;2021;2122;2223;2324	0
2A	34	Hazard Reduction	Undertake Vegetation Maintenance	Implement vegetation maintenance as per Network Management Plan	Other	Endeavour Energy			1920;2021;2122;2223;2324	0
4	35	Preparedness	Maintain Community Fire Units	Maintain Community Fire Units (CFUs) and training as per FRNSW policy.	FRNSW				1920;2021;2122;2223;2324	315;316;317;318;314
NA	36	Other	Manage Neighbourhood Safer Place	Maintain bushfire fuels at or below the level that meets the Essential Selection criteria in NSP Guidleine, prepared by the NSW RFS.	LGA;RFS				1920;2021;2122;2223;2324	326;335;323;329;331;332;333;320
NA	37	Other	Manage Neighbourhood Safer Place	Maintain bushfire fuels at or below the level that meets the Essential Selection criteria in NSP Guidleine, prepared by the NSW RFS	RFS;Other	NSW Department of Education			1920;2021;2122;2223;2324	321
NA	38	Other	Manage Neighbourhood Safer Place	Maintain bushfire fuels at or below the level that meets the Essential Selection criteria in NSP Guidleine, prepared by the NSW RFS	Private;RFS				1920;2021;2122;2223;2324	322;324;325;328;330;327;334



ID	Treatment strategy	Action	Agencies (Support)
T1	Hazard Reduction	Maintain APZ	LGA
T3	Hazard Reduction	Undertake Hazard Reduction Burning	RFS
T4	Community Education	Conduct Community Engagement Activity	RFS
T5	Property Planning	Develop/Implement Bushfire Emergency	Private (RFS)
T7	Preparedness	Inspect and Maintain Fire Trail	RFS
T8	Preparedness	Inspect and Maintain Fire Trail	DPI
T9	Hazard Reduction	Undertake Hazard Reduction Burning	RFS
T10	Preparedness	Inspect and Maintain Fire Trail	RFS, DPI
T11	Preparedness	Inspect and Maintain Fire Trail	LGA, RFS, DPI
T12	Preparedness	Inspect and Maintain Fire Trail	LGA, RFS
T13	Preparedness	Inspect and Maintain Fire Trail	LGA, OEH, RFS, DPI
T22	Hazard Reduction	Undertake Vegetation Maintenance	TransGrid
T32	Hazard Reduction	Maintain APZ	TransGrid
T33	Hazard Reduction	Maintain APZ	Telstra
T34	Hazard Reduction	Undertake Vegetation Maintenance	Endeavour Energy
T36	Other	Manage Neighbourhood Safer Place	LGA, RFS
T37	Other	Manage Neighbourhood Safer Place	RFS, NSW Department of
T38	Other	Manage Neighbourhood Safer Place	Private, RFS

Map Ref	Asset name	Asset type	Subtype	Risk level	Priority	Treatment
4	Days Road Christian Community Centre	Human	Special Fire	Extreme	1B	T5
48	Glenorie (Smallwood to Halcrows)	Human	Residential	Extreme	1B	T4,9,10
53	Glenorie (Smallwood to Broadwater)	Human	Residential	Extreme	1B	T4,9,10
54	South Maroota (Chilvers to Floyds)	Human	Residential	Extreme	1B	T4,3,8,7
55	South Maroota (Wheeny Creek to)	Human	Residential	Extreme	1B	T4,7,9
56	South Maroota (Pacific Park to Charcoal)	Human	Residential	Extreme	1B	T4,9,13
57	South Maroota (Kearney to Floyds)	Human	Residential	Extreme	1B	T4,9,10
58	South Maroota (Pacific Park to Sackville)	Human	Residential	Extreme	1B	T4,9,12
59	Sackville North (Paulis to Kearney)	Human	Residential	Extreme	1B	T4,9,10
60	South Maroota (Paulis to Days)	Human	Residential	Extreme	1B	T4,9,10
61	South Maroota (Days to Wisemans)	Human	Residential	Extreme	1B	T4,9
62	Sackville North (Sackville Ferry to Mud)	Human	Residential	Extreme	1B	T4,9,10
64	South Maroota (Gallaghers to Tuff Hill)	Human	Residential	Extreme	1B	T4,9,10
65	South Maroota (Sackville Ferry to Tuff)	Human	Residential	Extreme	1B	T9,4,10
66	Lower Portland (Lower half moon to)	Human	Residential	Extreme	1B	T4,9,11
67	Wisemans Ferry (Cardiffs to M Sherpa)	Human	Residential	Extreme	1B	T4,10,9
68	Sackville North (Tuff Hill to River East)	Human	Residential	Extreme	1B	T4,9
69	Lower Portland (Cliftonville to Lower Half)	Human	Residential	Extreme	1B	T4,11
70	Lower Portland (Barjacks to Dargle)	Human	Residential	Extreme	1B	T4,9,11
71	Maroota (Barjacks to Cliftonville)	Human	Residential	Extreme	1B	T4,9,11
72	Maroota (Dalgely to Mr Sharps)	Human	Residential	Extreme	1B	T4,9
73	Leets Vale (River to Mr Sharps)	Human	Residential	Extreme	1B	T4,9,10
74	Wisemans Ferry (Old Northern to River)	Human	Residential	Extreme	1B	T1,4
75	Maroota (Idewild to Maroota Tracks)	Human	Residential	Extreme	1B	T4,11
76	Glenorie (Yoothamurra to Idewild)	Human	Residential	Extreme	1B	T4,9,11
77	Glenorie (Spur to Yoothamurra)	Human	Residential	Extreme	1B	T9,4,10
78	Lower Portland (Quailmood)	Human	Residential	Extreme	1B	T4,10
NA	Transgrid Transmission Lines	Economic	Infrastructure	Very High	2A	T22
NA	Telstra Infrastructure/Communications	Economic	Infrastructure	Very High	2A	T33
NA	Endeavour Energy Network	Economic	Infrastructure	Very High	2A	T34
87	Kiata Country Club	Economic	Tourist and	Very High	2A	T5,10,9,4
97	Maroota (Haerres)	Human	Residential	Very High	2A	T9,4
145	Cattai (Wheeny Creek to Wisemans)	Human	Residential	Very High	2A	T4,9,7
146	South Maroota (Charcoal to O'Briens)	Human	Residential	Very High	2A	T4,9,7
147	Sackville North (Sackville Ferry to)	Human	Residential	Very High	2A	T4,9
148	Sackville North (Sackville Ferry to)	Human	Residential	Very High	2A	T9,4
149	Sackville North (Chapel Hill to Sackville)	Human	Residential	Very High	2A	T4
150	Sackville North (Moss Ridge to River)	Human	Residential	Very High	2A	T9,4
151	Forgotten Valley Mobile Preschool	Human	Special Fire	Very High	2A	T5
153	Substation (5016 Old Northern Road)	Economic	Infrastructure	Very High	2A	T32
158	Portelli's Cottage Farm	Economic	Agricultural	Very High	2A	T9
161	Brewongle Environment & Education	Human	Special Fire	Very High	2A	T5
320	South Maroota Community Centre	Human	Other	Low	NA	T36
321	Maroota Public School Building NSP	Human	Other	Low	NA	T37
322	Cliftonville Lodge Resort Kiosk Building	Human	Other	Low	NA	T38
323	Wisemans Ferry Park Open Space NSP	Human	Other	Low	NA	T36
324	Ullinbawn Water Ski Park Open Space	Human	Other	Low	NA	T38
325	Dargle Ski Park Open Space NSP	Human	Other	Low	NA	T38

The Hills BPMC Bush Fire Risk Management Plan 2019

Maroota - Map Display Area

Map 1 of 4

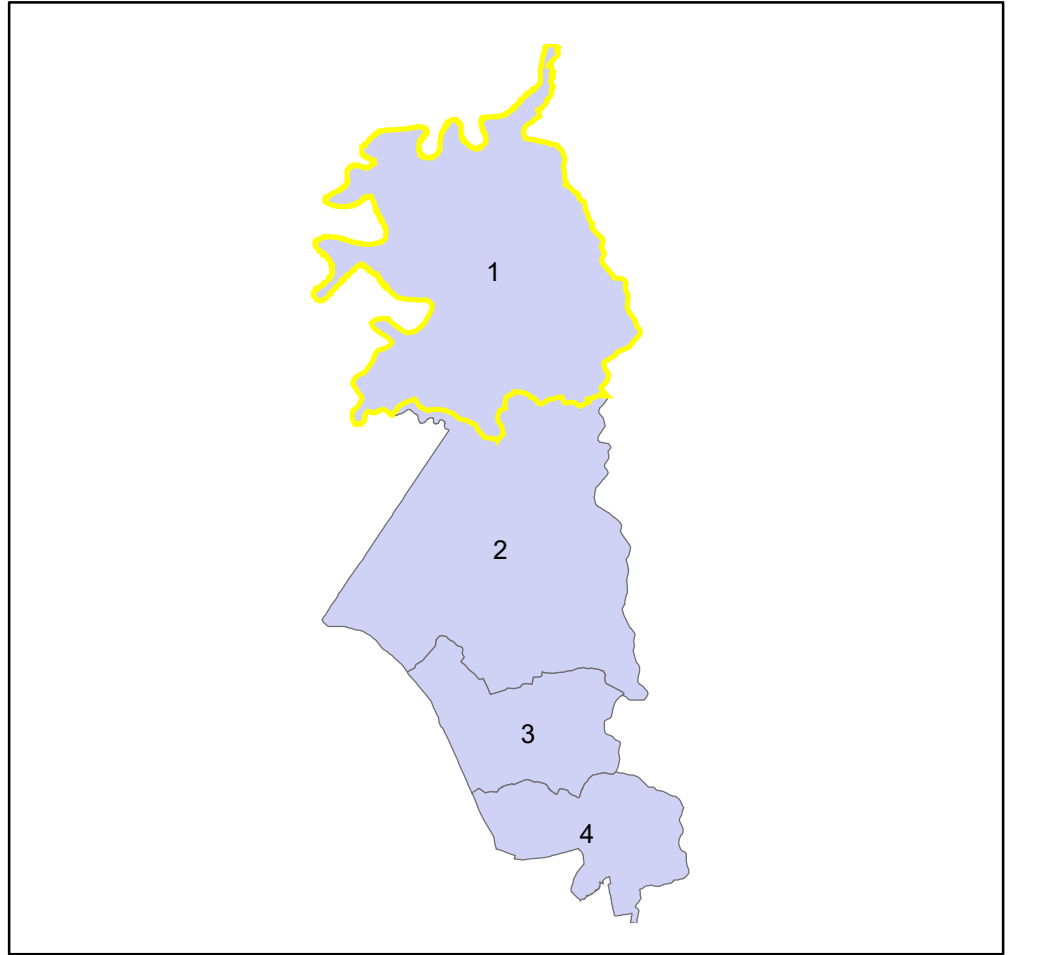
This Bush Fire Risk Management Plan (BFRMP) has been prepared by the The Hills Bush Fire Management Committee (BFMC) pursuant to section 52 of the *Rural Fires Act 1997*.

The aim of this BFRMP is to reduce the adverse impact of bush fires on life, property and the environment.

The objectives of this BFRMP are to:

- reduce the number of human-induced bush fire ignitions that cause damage to life, property or the environment;
- manage fuel to reduce the spread and intensity of bush fires while minimising environmental/ecological impacts;
- reduce the community's vulnerability to bush fires by improving its preparedness; and
- effectively contain fires with a potential to cause damage to life, property and the environment.

This map forms part of the BFRMP for the The Hills BFMC, covering the local government areas of The Hills. It should be viewed in conjunction with the accompanying BFRMP document which provides further details on the BFMC area, the assets assessed and the risk assessment process used.



Review
Under the *Rural Fires Act 1997* this plan must be reviewed and updated within each successive five year period following the constitution of the BFMC. The The Hills BFMC will also review this plan as necessary. This may be triggered by a range of circumstances, including but not limited to:

- changes to the BFMC areas, organisational responsibilities or legislation;
- changes to the bush fire risk in the area; or
- following a major fire event.

Assets
This BFRMP identifies the assets that are considered by the The Hills BFMC and community to be at risk from bush fire, assesses the bush fire risk to each asset and assigns treatments designed to mitigate the risk. Assets in the BFMC area identified as requiring treatments are listed in the assets table. Other assets within the BFMC area that were assessed as not requiring treatments within the life of this plan are listed in the appendix to the BFRMP document. The Map Ref number "NA" denotes non-spatial assets.

Treatments
Specific treatments assigned to assets in the The Hills area are listed in the treatments table and linked to the assets which they are designed to protect. Standard BFMC wide treatments (i.e. not linked to a specific asset) which occur on an ongoing basis within the BFMC area are:

- reviewing the bush fire prone land map;
- ensuring developments in the bush fire prone land comply with Planning for Bush Fire Protection;
- using the Local Environment Plan's (LEPs) to control development in areas with a bush fire risk;
- varying the standard bush fire danger period as required;
- requiring permits during bush fire danger periods
- prosecution of arsonists/offenders
- investigation of bush fire cause;
- normal fire suppression activities;
- assessing and managing compliance with strategic fire-fighting resource allocation management systems;
- preparation of a S&S Operations Coordination Plan;

Note on LNZ: All areas not specifically mapped as an APZ, SF&Z or FEZ are considered as LNZ for this risk management plan. For areas identified by an LNZ polygon on the map, please refer to the BFRMP document for the specific land management objectives.

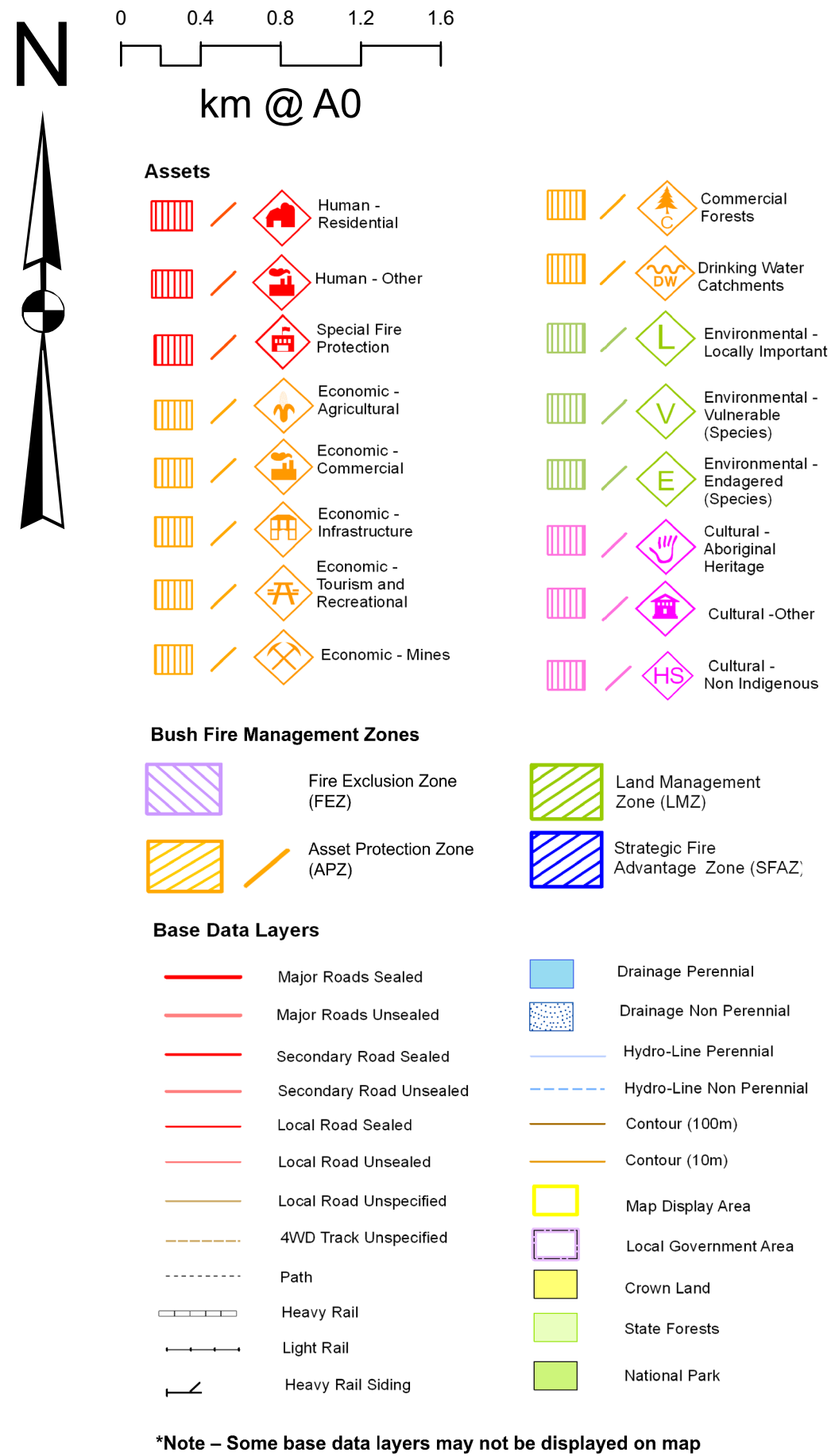
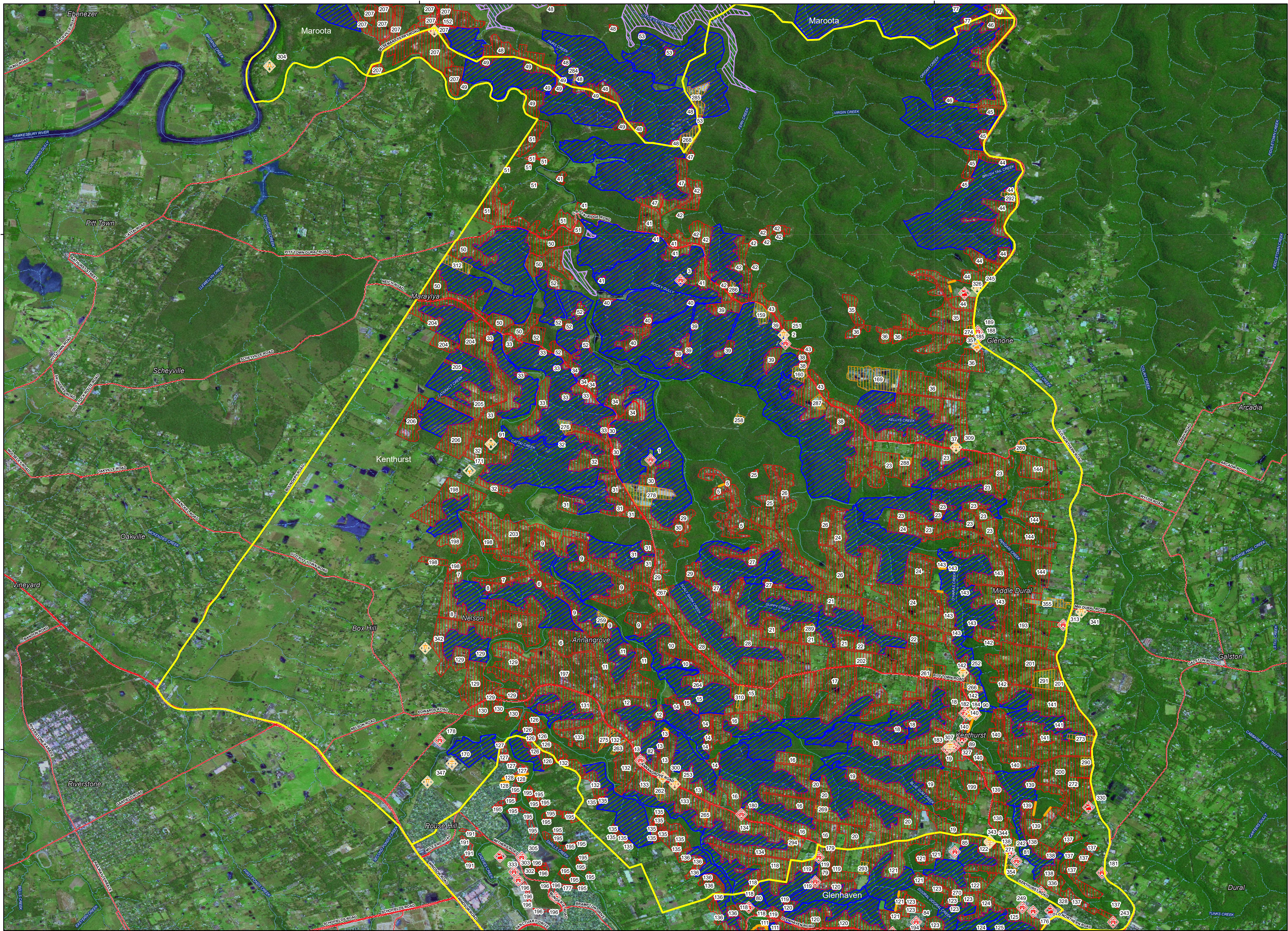
Zone	Purpose	Suppression	Zone
Asset Protection Zone	To protect human life, property and highly valued public assets and values.	To enable the safe use of Direct Attack suppression strategies within the zone. To minimise bush fire impacts on undefended assets.	As per RFS document <i>Standards for Asset Protection Zones</i> .
Strategic Fire Advantage Zone	To provide strategic areas of fire protection advantage which will reduce the speed and intensity of bush fires, and reduce the potential for spot fire development. To aid containment of wildfires to existing management boundaries.	To improve the likelihood and safe use of Parallel Attack suppression strategies within the zone. Indirect Attack (back burning) in high to very high fire weather conditions within the zone. To reduce the likelihood of: Crown fire development within the zone, and/or Spot fire ignition potential from the zone.	Zone width related to suppression objectives and dependant upon: <ul style="list-style-type: none">- Topography- Aspect- Spotting propensity for spot fire- Location of adjacent fire breaks- Mosaic pattern of treatment- Assess Overall Fuel Hazard (OFH) once vegetation communities reach minimum fire thresholds within this plan.- Management practices should aim to achieve mosaic fuel reduction patterns so that the majority of the SF&Z has an OFH of less than high.
Land Management Zone	To meet relevant land management objectives in area where APZs or SF&Zs are not appropriate.	As per the land management and fire protection objectives of the responsible land management agency. To reduce the likelihood of spread of fires. To undertake mosaic burning.	As appropriate to achieve land management, e.g. heritage and/or fire protection e.g. broad scale mosaic burning objectives.
Fire Exclusion Zone	To exclude bush fires.	N/A	Variable dependant on size of fire sensitive area requiring protection.

Disclaimer
The The Hills BFMC makes every effort to ensure the quality of the information available on this map. Before relying on the information on this map, users should carefully evaluate its accuracy, completeness and relevance for their purposes, and should obtain any appropriate professional advice relevant to their particular circumstances.

The The Hills BFMC can not guarantee and assumes no legal liability or responsibility for the accuracy, currency or completeness of the information. Copyright: The Hills BFMC 2019.

Authorized by: of The Hills BFMC.
Date created: Friday, 10 May 2019

BFRMP version 2.1.26.0



Treatments			
ID	Treatment strategy	Action	Agencies (Support)
T1	Hazard Reduction	Maintain APZ	LGA
T2	Preparedness	Inspect and Maintain Fire Trail	LGA
T4	Community Education	Conduct Community Engagement Activity	RFS
T5	Property Planning	Develop/Implement Bushfire Emergency	Private (RFS)
T6	Hazard Reduction	Undertake Hazard Reduction Burning	RFS (LGA)
T7	Preparedness	Inspect and Maintain Fire Trail	RFS
T8	Preparedness	Inspect and Maintain Fire Trail	DPI
T9	Hazard Reduction	Undertake Hazard Reduction Burning	RFS
T10	Preparedness	Inspect and Maintain Fire Trail	RFS, DPI
T11	Preparedness	Inspect and Maintain Fire Trail	LGA, RFS, DPI
T12	Preparedness	Inspect and Maintain Fire Trail	LGA, RFS
T22	Hazard Reduction	Undertake Vegetation Maintenance	TransGrid
T27	Property Planning	Develop/Implement Bushfire Emergency	NSW Department of Education
T31	Hazard Reduction	Maintain APZ	DPI
T32	Hazard Reduction	Maintain APZ	TransGrid
T33	Hazard Reduction	Maintain APZ	Telstra
T34	Hazard Reduction	Undertake Vegetation Maintenance	Endeavour Energy
T36	Other	Manage Neighbourhood Safer Place	LGA, RFS
T38	Other	Manage Neighbourhood Safer Place	Private, RFS

Assets						
Map Ref	Asset name	Asset type	Subtype	Risk level	Priority	Treatment
1	Kenthurst Study Centre	Human	Special Fire	Extreme	1B	T5
2	Hillside Public School	Human	Special Fire	Extreme	1B	T5
3	Youth With a Mission	Human	Special Fire	Extreme	1B	T5
5	Kenthurst (Nyari to Cadwells)	Human	Residential	Extreme	1B	T12;6;4;1
6	Annangrove (Everett to Hillclimb)	Human	Residential	Extreme	1B	T4,9
7	Annangrove (Nelson to Amanda)	Human	Residential	Extreme	1B	T4,9
8	Nelson (Nelson to Everett)	Human	Residential	Extreme	1B	T4,9
9	Kenthurst (Johnson to Pedvin)	Human	Residential	Extreme	1B	T2,4,9
10	Kenthurst (Burnell to Tallawung)	Human	Residential	Extreme	1B	T4,9
11	Annangrove (Pedvin to O'Keefe)	Human	Residential	Extreme	1B	T4,9,2
12	Annangrove (Whites Ridge to Woodland)	Human	Residential	Extreme	1B	T4,9,2
13	Annangrove (Woodland to Gibber)	Human	Residential	Extreme	1B	T2,4,9
14	Kenthurst (Campbell to Nicholli)	Human	Residential	Extreme	1B	T9,4
15	Kenthurst (Blue Gum to Campbell)	Human	Residential	Extreme	1B	T9,4
16	Annangrove (Campbell to Aston)	Human	Residential	Extreme	1B	T4,9,12
17	Kenthurst (Campbell to Ellendale)	Human	Residential	Extreme	1B	T4,9,7
18	Kenthurst (Lisbon to Jones)	Human	Residential	Extreme	1B	T9,4,7
19	Kenthurst (Jones to Sedger)	Human	Residential	Extreme	1B	T4,7,9
20	Kenthurst (Sedger to Raym)	Human	Residential	Extreme	1B	T4,9,7
21	Kenthurst (Binalong to Marleba)	Human	Residential	Extreme	1B	T4,9
22	Kenthurst (Pamela to Hilton)	Human	Residential	Extreme	1B	T4,9
23	Middle Dural (Kandara to Smiths)	Human	Residential	Extreme	1B	T4,10,9
24	Kenthurst (Hazeldean to Roughley)	Human	Residential	Extreme	1B	T9,4,10,1
25	Kenthurst (Cadwells to Porters)	Human	Residential	Extreme	1B	T6,4,8
26	Kenthurst (Hazeldean to Porters)	Human	Residential	Extreme	1B	T4,8
27	Kenthurst (Orana to Nyari)	Human	Residential	Extreme	1B	T11,4,9
28	Kenthurst (Orana to Pitt Town)	Human	Residential	Extreme	1B	T4,9
29	Kenthurst (Coppertall to Orana)	Human	Residential	Extreme	1B	T10,4,9
30	Kenthurst (Coppertall to Allawah)	Human	Residential	Extreme	1B	T10,4,9
31	Kenthurst (Pyres to Lang)	Human	Residential	Extreme	1B	T10,4,9
32	Kenthurst (McClymonts to Pyes)	Human	Residential	Extreme	1B	T4,10,9
33	Kenthurst (McClymonts to Maguires)	Human	Residential	Extreme	1B	T4,9
34	Kenthurst (Gibbs to Allawah)	Human	Residential	Extreme	1B	T4,9,8
35	Glenorie (Schwebel to Sernell)	Human	Residential	Extreme	1B	T4,12
36	Glenorie (Boronia to Schwebel)	Human	Residential	Extreme	1B	T7,4
37	Glenorie (Cattai Ridge to Boronia)	Human	Residential	Extreme	1B	T9,4
38	Glenorie (Smiths to Cattai Ridge)	Human	Residential	Extreme	1B	T9,4,8
39	Glenorie (Cattai Ridge to Miller)	Human	Residential	Extreme	1B	T4,9,7
40	Glenorie (Miller)	Human	Residential	Extreme	1B	T4,9
41	Glenorie (Miller to Newman)	Human	Residential	Extreme	1B	T4,10,9
42	Glenorie (Neich to Fern Gully)	Human	Residential	Extreme	1B	T9,4,7
43	Glenorie (Cattai Ridge to Neich)	Human	Residential	Extreme	1B	T4
44	Glenorie (Mount View to Sernell)	Human	Residential	Extreme	1B	T9,4,10,1
45	Glenorie (Mount View to Cockatoo)	Human	Residential	Extreme	1B	T4,9,10
46	Glenorie (Cockatoo to Broadwater)	Human	Residential	Extreme	1B	T4,9,10
47	Glenorie (Newman to Cattai Creek)	Human	Residential	Extreme	1B	T9,4,10
49	Cattai (Halcrows to Gas Pipeline)	Human	Residential	Extreme	1B	T4,9,7
50	Maraylya (Cattai Ridge to PittTown)	Human	Residential	Extreme	1B	T4,9,8
51	Maraylya (Cattai Ridge to St Johns)	Human	Residential	Extreme	1B	T4
52	Kenthurst (Pitt Town to Hidden Valley)	Human	Residential	Extreme	1B	T8,4,9
NA	Telstra Infrastructure/Communications	Economic	Infrastructure	Very High	2A	T33
NA	Endeavour Energy Network	Economic	Infrastructure	Very High	2A	T34
NA	Transgrid Transmission Lines	Economic	Infrastructure	Very High	2A	T22
81	The Hills Grammar School	Human	Special Fire	Very High	2A	T27
82	Annangrove Public School	Human	Special Fire	Very High	2A	T27
89	Kenthurst Public School	Human	Special Fire	Very High	2A	T27
90	Kenthurst Preschool Kindergarten	Human	Special Fire	Very High	2A	T5
91	Bilablong Retreat	Economic	Tourist and	Very High	2A	T5,4,9,10
118	Annangrove (Glenhaven to Colbran)	Human	Residential	Very High	2A	T4,9
127	Rouse Hill (Mile End to Empress)	Human	Residential	Very High	2A	T4,9
129	Annangrove (Blind to Amaroo Park)	Human	Residential	Very High	2A	T4,9
130	Annangrove (Edwards)	Human	Residential	Very High	2A	T4
131	Annangrove (Annangrove to Langlands)	Human	Residential	Very High	2A	T4,9
132	Annangrove (Langlands to Stringer)	Human	Residential	Very High	2A	T4,9
133	Annangrove (Annangrove to Kingcott)	Human	Residential	Very High	2A	T4,9
134	Annangrove (Annangrove to Colbran)	Human	Residential	Very High	2A	T4,9
135	Kellyville (Bruce to Withers)	Human	Residential	Very High	2A	T4,9
136	Kellyville (Samantha Riley to Withers)	Human	Residential	Very High	2A	T9,4
137	Dural (Pelitt to Derriwong)	Human	Residential	Very High	2A	T4
138	Dural (Derriwong to Kenthurst)	Human	Residential	Very High	2A	T4,9
139	Dural (Langford to Kenthurst)	Human	Residential	Very High	2A	T4,9,31
140	Dural (Nelson to Wyoming)	Human	Residential	Very High	2A	T4,1
141	Dural (Wyoming to Wimbunga)	Human	Residential	Very High	2A	T4,9
142	Dural (Dobell to Glenroy)	Human	Residential	Very High	2A	T4,9
143	Middle Dural (Glenroy to Roughley)	Human	Residential	Very High	2A	T4,9,1
144	Middle Dural (Cranstons to Pinus)	Human	Residential	Very High	2A	T4
152	Substation (Halcrows Rd Cattai)	Economic	Infrastructure	Very High	2A	T32
159	Melinda Hart Equestrian	Economic	Agricultural	Very High	2A	T7,9
160	Weinerts Performance Horses	Economic	Agricultural	Very High	2A	T9,8
326	Les Shore Oval Clubhouse Building NSP	Human	Other	Low	NA	T36
327	Kenthurst Uniting Church Building NSP	Human	Other	Low	NA	T38
330	Dural Country Club Building NSP	Human	Other	Low	NA	T38

The Hills BFMCM Bush Fire Risk Management Plan 2019

Kenthurst - Map Display Area

Map 2 of 4

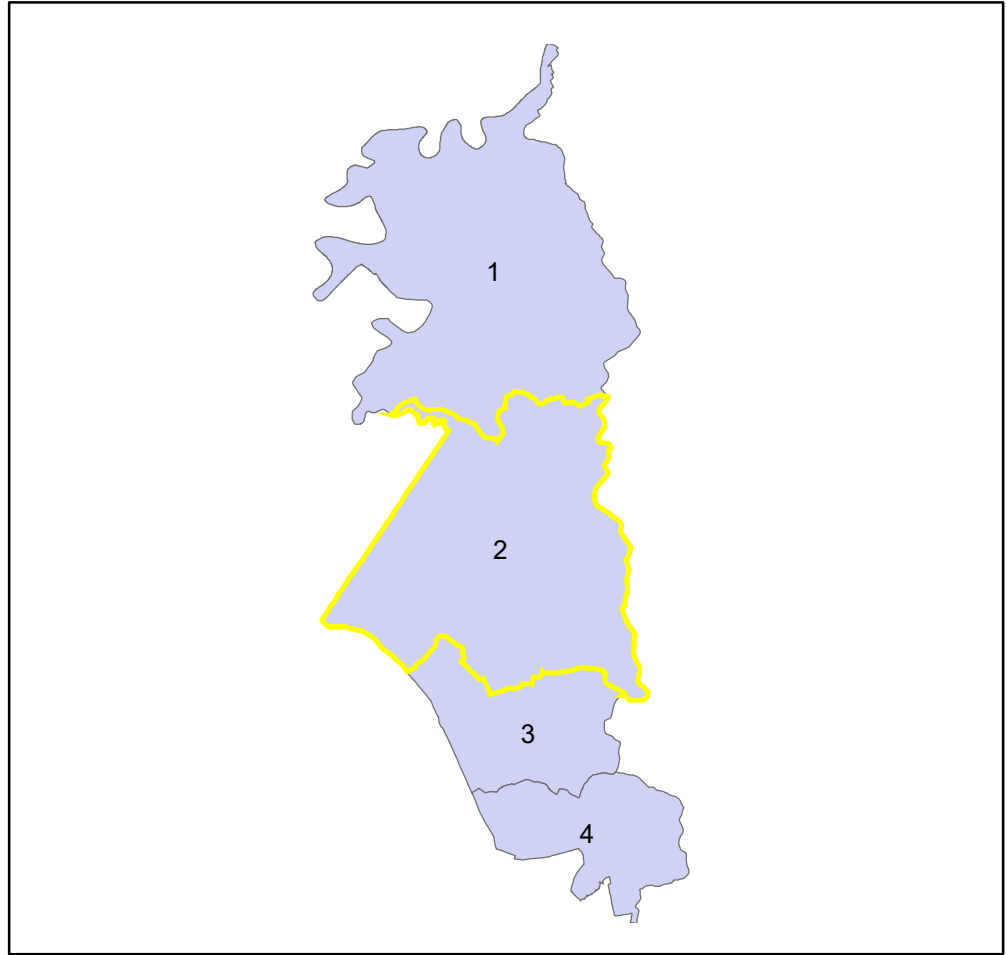
This Bush Fire Risk Management Plan (BFRMP) has been prepared by the The Hills Bush Fire Management Committee (BFMC) pursuant to section 52 of the *Rural Fires Act 1997*.

The aim of this BFRMP is to reduce the adverse impact of bush fires on life, property and the environment.

The objectives of this BFRMP are to:

- reduce the number of human-induced bush fire ignitions that cause damage to life, property or the environment;
- manage fuel to reduce the spread and intensity of bush fires while minimising environmental/ecological impacts;
- reduce the community's vulnerability to bush fires by improving its preparedness; and
- effectively contain fires with a potential to cause damage to life, property and the environment.

This map forms part of the BFRMP for the The Hills BFMC, covering the local government areas of The Hills. It should be viewed in conjunction with the accompanying BFRMP document which provides further details on the BFMC area, the assets assessed and the risk assessment process used.



Review
Under the *Rural Fires Act 1997* this plan must be reviewed and updated within each successive five year period following the constitution of the BFMC. The The Hills BFMC will also review this plan as necessary. This may be triggered by a range of circumstances, including but not limited to:
- changes to the BFMC areas, organisational responsibilities or legislation;
- changes to the bush fire risk in the area; or
- following a major fire event.

Assets

This BFRMP identifies the assets that are considered by the The Hills BFMC and community to be at risk from bush fire. It assesses the bush fire risk to each asset and assigns treatments designed to mitigate the risk. Assets in the BFMC area identified as requiring treatments are listed in the appendix. Other assets within the BFMC area that were assessed as not requiring treatments within the life of this plan are listed in the appendix to the BFRMP document. The Map Ref number "NA" denotes non-spatial assets.

Treatments

Specific treatments assigned to assets in the The Hills area are listed in the treatments table and linked to the assets which they are designed to protect. Standard BFMC wide treatments (i.e. not linked to a specific asset) which occur on an ongoing basis within the BFMC area are:

- reviewing the bush fire prone land map;
- ensuring developments in the bush fire prone land comply with Planning for Bush Fire Protection;
- using the Local Environment Plan's (LEPs) to control development in areas with a bush fire risk;
- varying the standard bush fire danger period as required;
- requiring permits during bush fire danger periods
- prosecution of arsonists/offenders
- investigation of bush fire causes;
- normal fire suppression activities;
- assessing and managing compliance with strategic fire-fighting resource allocation management systems;
- preparation of a S&S Operations Coordination Plan;

Note on LNZ: All areas not specifically mapped as an APZ, SF&Z or FEZ are considered as LNZ for this risk management plan. For areas identified by an LNZ polygon on the map, please refer to the BFRMP document for the specific land management objectives.

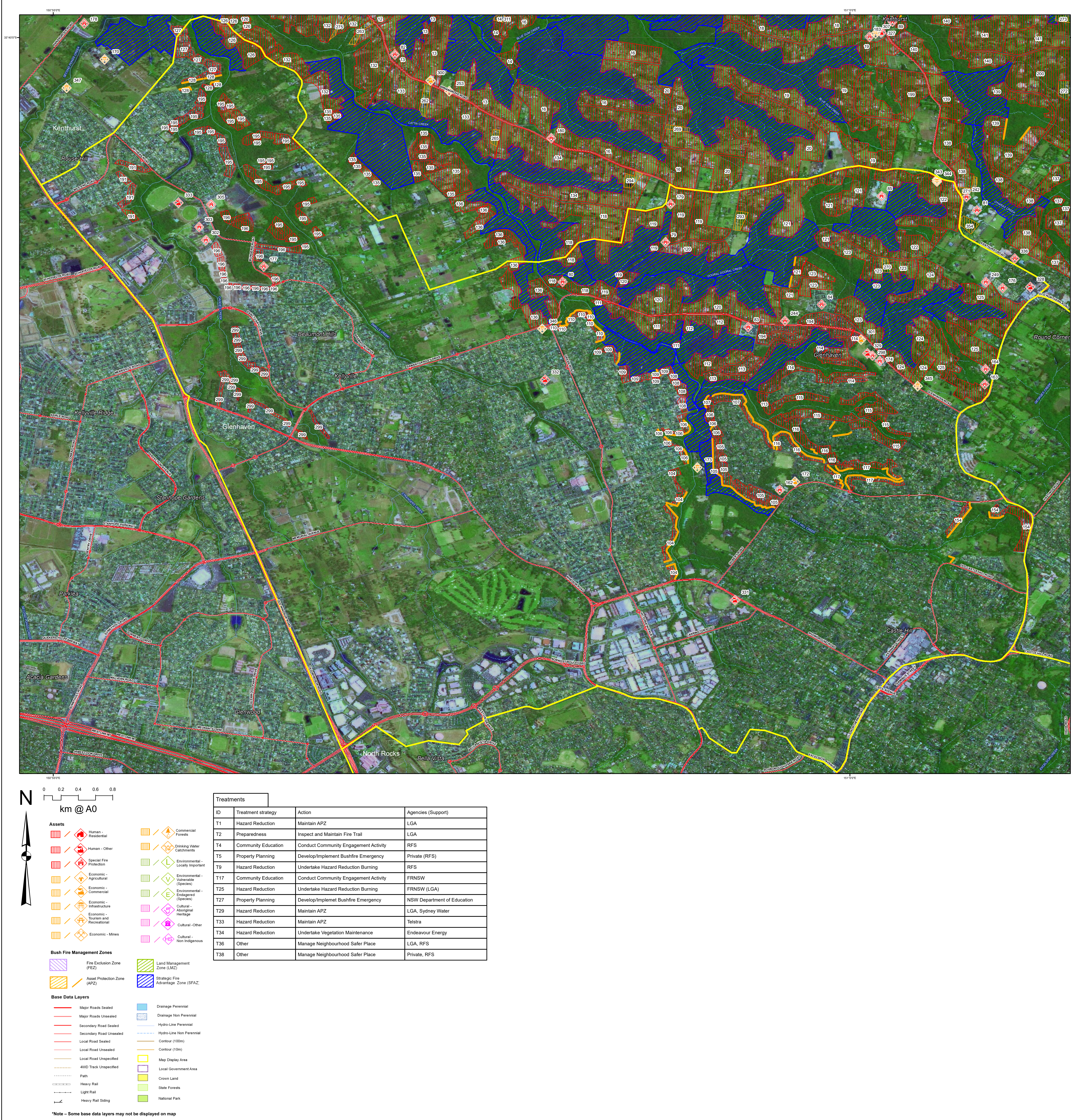
Zone	Purpose	Suppression	Zone
Asset Protection Zone	To protect human life, property and highly valued public assets and values.	To enable the safe use of Direct Attack suppression strategies within the zone.	As per RFS document <i>Standards for Asset Protection Zones</i> .
	To minimise bush fire impacts on undefended assets.	To improve the likelihood and safe use of Parallel Attack suppression strategies within the zone.	Zone width related to suppression objectives and dependant upon: - Topography - Aspect - Spotting propensity for spot fire development. To aid containment of wildfires to existing management boundaries.
Strategic Fire Advantage Zone	To provide strategic areas of fire protection advantage which will reduce the speed and intensity of bush fires, and reduce the potential for spot fire development.	To improve the likelihood and safe use of Indirect Attack (back burning) in high to very high fire weather conditions within the zone.	Zone width related to suppression objectives and dependant upon: - Topography - Aspect - Spotting propensity for spot fire development. To aid containment of wildfires to existing management boundaries.
	To aid containment of wildfires to existing management boundaries.	To reduce the likelihood of: Crown fire development within the zone; and/or Spot fire ignition potential from the zone.	Management practices should aim to achieve mosaic fuel reduction patterns so that the majority of the SF&Z has an OFH of less than high.
Land Management Zone	To meet relevant land management objectives in area where APZs or SF&Zs are not appropriate.	As per the land management and fire protection objectives of the responsible land management agency.	As appropriate to achieve land management, e.g. heritage and/or fire protection e.g. broad scale mosaic burning objectives.
	To reduce the likelihood of spread of fires.	To undertake mosaic burning.	To undertake mosaic burning.
Fire Exclusion Zone	To exclude bush fires.	N/A	Variable dependant on size of fire sensitive area requiring protection.

Disclaimer
The The Hills BFMC makes every effort to ensure the quality of the information available on this map. Before relying on the information on this map, users should carefully evaluate its accuracy, completeness and relevance for their purposes, and should obtain any appropriate professional advice relevant to their particular circumstances.

The The Hills BFMC can not guarantee and assumes no legal liability or responsibility for the accuracy, currency or completeness of the information. Copyright: The Hills BFMC 2019.

Authorized by: of The Hills BFMC.
Date created: Friday, 10 May 2019

BFRMP version 2.1.26.0



Assets						
Map Ref	Asset name	Asset type	Subtype	Risk level	Priority	Treatment
NA	Telstra Infrastructure/Communications	Economic	Infrastructure	Very High	2A	T33
NA	Endeavour Energy Network	Economic	Infrastructure	Very High	2A	T34
79	Glenhaven Private Preschool	Human	Special Fire	Very High	2A	T5
80	Rainbow Haven Kindergarten	Human	Special Fire	Very High	2A	T5
83	Glenhaven Gardens/Carinya House	Human	Special Fire	Very High	2A	T5
84	Living Choice Glenhaven Retirement	Human	Special Fire	Very High	2A	T5
85	Marian College / St Madeleine's Primary	Human	Special Fire	Very High	2A	T27
104	Castle Hill (Fried Caterson Reserve)	Human	Residential	Very High	2A	T1;17
105	Castle Hill (Fried Caterson Reserve)	Human	Residential	Very High	2A	T29;25;17;2
106	Castle Hill (Cameo Place/Fullers Road)	Human	Residential	Very High	2A	T1;25;2;17
107	Castle Hill (Fullers Road/Citadel)	Human	Residential	Very High	2A	T1;25;2;17
108	Kellyville (Cattai Creek Conservation)	Human	Residential	Very High	2A	T17;25
109	Kellyville (Jack McNamee to Georgia)	Human	Residential	Very High	2A	T1;25;17
110	Kellyville (Cattai Creek Conservation)	Human	Residential	Very High	2A	T1;17
111	Glenhaven (Glenhaven to Bannerman)	Human	Residential	Very High	2A	T4;9
112	Glenhaven (Mills to Glenhaven)	Human	Residential	Very High	2A	T4;9
113	Glenhaven (Fullers Road Reserve Adam)	Human	Residential	Very High	2A	T25;17
114	Glenhaven (Hyde Avenue Reserve)	Human	Residential	Very High	2A	T2;25;17
115	Glenhaven (Fullers Road Reserve)	Human	Residential	Very High	2A	T17
116	Glenhaven (Citadel Crescent Reserve)	Human	Residential	Very High	2A	T1;17
117	Glenhaven (Linkley Avenue Reserve)	Human	Residential	Very High	2A	T1;17
119	Annangrove/ Bannerman to Robson	Human	Residential	Very High	2A	T4;9
120	Glenhaven (Bannerman to Holland)	Human	Residential	Very High	2A	T4;9
121	Kenthurst (Holland Road Reserve)	Human	Residential	Very High	2A	T4;1;9
122	Dural (Annangrove to Sagars)	Human	Residential	Very High	2A	T4;9
123	Glenhaven (Edgcliff to Sagars)	Human	Residential	Very High	2A	T4;9
124	Glenhaven (Gilmour to Haven)	Human	Residential	Very High	2A	T4;9
125	Dural (Gilmour to Yuruga)	Human	Residential	Very High	2A	T4;9
126	Kellyville (Ross to Nest Hill)	Human	Residential	Very High	2A	T4;9
128	Rouse Hill (Maria Iori Reserve Harward)	Human	Residential	Very High	2A	T1
154	Castle Hill (Heritage Park)	Human	Residential	Very High	2A	T1;17
328	Dural Mail Open Space NSP	Human	Other	Low	NA	T36
329	Glenhaven Community Centre Building	Human	Other	Low	NA	T36
331	Castle Hill Showground Open Space	Human	Other	Low	NA	T36
332	Bernie Mullane Sporting Complex Car	Human	Other	Low	NA	T36
333	The Hills Centenary Park Open Space	Human	Other	Low	NA	T36

The Hills BFMC Bush Fire Risk Management Plan 2019

Glenhaven - Map Display Area

Map 3 of 4

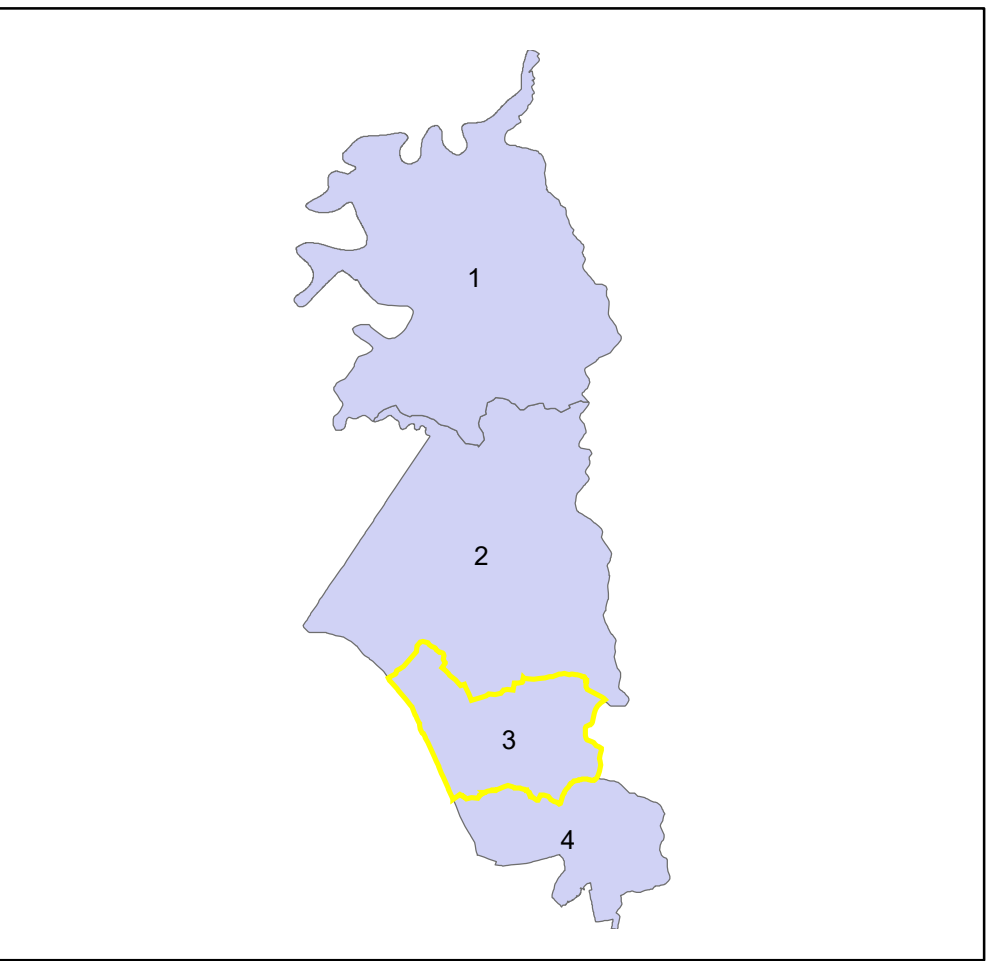
This Bush Fire Risk Management Plan (BFRMP) has been prepared by the The Hills Bush Fire Management Committee (BFMC) pursuant to section 52 of the *Rural Fires Act 1997*.

The aim of this BFRMP is to reduce the adverse impact of bush fires on life, property and the environment.

The objectives of this BFRMP are to:

- reduce the number of human-induced bush fire ignitions that cause damage to life, property or the environment;
- manage fuel to reduce the spread and intensity of bush fires while minimising environmental/ecological impacts;
- reduce the community's vulnerability to bush fires by improving its preparedness; and
- effectively contain fires with a potential to cause damage to life, property and the environment.

This map forms part of the BFRMP for the The Hills BFMC, covering the local government areas of The Hills. It should be viewed in conjunction with the accompanying BFRMP document which provides further details on the BFMC area, the assets assessed and the risk assessment process used.



Review
Under the *Rural Fires Act 1997* this plan must be reviewed and updated within each successive five year period following the constitution of the BFMC. The The Hills BFMC will also review this plan as necessary. This may be triggered by a range of circumstances, including but not limited to:

- changes to the BFMC area, organisational responsibilities or legislation;
- changes to the bush fire risk in the area; or
- following a major fire event.

Assets

This BFRMP identifies the assets that are considered by the The Hills BFMC and community to be at risk from bush fires. It assesses the bush fire risk to each asset and assigns treatments designed to mitigate the risk. Assets in the BFMC area identified as requiring treatments are listed in the assets table. Other assets within the BFMC area that were assessed as not requiring treatments within the life of this plan are listed in the appendix to the BFRMP document. The Map Ref number "NA" denotes non-spatial assets.

Treatments

Specific treatments assigned to assets in the The Hills area are listed in the treatments table and linked to the assets which they are designed to protect. Standard BFMC wide treatments (i.e. not linked to a specific asset) which occur on an ongoing basis within the BFMC area are:

- reviewing the bush fire prone land map;
- ensuring developments in the bush fire prone land comply with Planning for Bush Fire Protection;
- using the Local Environment Plan's (LEPs) to control development in areas with a bush fire risk;
- varying the standard bush fire danger period as required;
- requiring permits during bush fire danger periods
- prosecution of arsonists/offenders
- investigation of bush fire causes;
- normal fire suppression activities;
- assessing and managing compliance with strategic fire-fighting resource allocation management systems;
- preparation of a S&S Operations Coordination Plan;

Note on LMZ: All areas not specifically mapped as an APZ, SFAZ or FEZ are considered as LMZ for this risk management plan. For areas identified by an LMZ polygon on the map, please refer to the BFRMP document for the specific land management objectives.

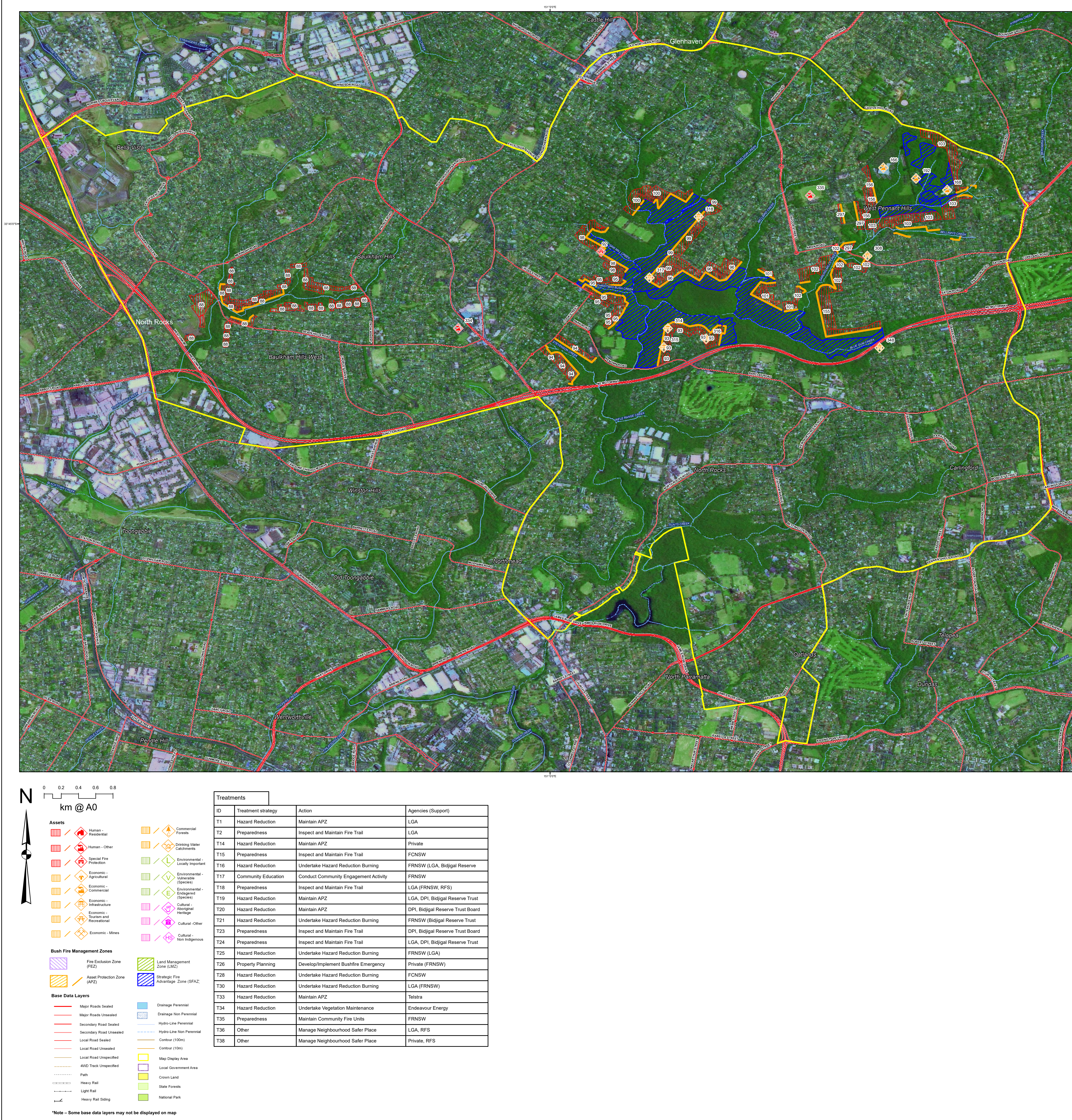
Zone	Purpose	Suppression	Zone
Asset Protection Zone	To protect human life, property and highly valued public assets and values.	To enable the safe use of Direct Attack suppression strategies within the zone. To minimise bush fire impacts on undefended assets.	As per RFS document <i>Standards for Asset Protection Zones</i> .
Strategic Fire Advantage Zone	To provide strategic areas of fire protection advantage which will reduce the speed and intensity of bush fires, and reduce the potential for spot fire development. To aid containment of wildfires to existing management boundaries.	To improve the likelihood and safe use of Parallel Attack suppression strategies within the zone. Indirect Attack (back burning) in high to very high fire weather conditions within the zone. To reduce the likelihood of: Crown fire development within the zone. and/or Spot fire ignition potential from the zone.	Zone width related to suppression objectives and dependant upon: <ul style="list-style-type: none">- Aspect- Spotting propensity- Location of adjacent fire breaks- Mosaic pattern of treatment- Assess Overall Fuel Hazard (OFH) once vegetation communities reach minimum fire thresholds within this plan.- Management practices should aim to achieve mosaic fuel reduction patterns so that the majority of the SFAZ has an OFH of less than high.
Land Management Zone	To meet relevant land management objectives in area where APZs or SFAZs are not appropriate.	As per the land management and fire protection objectives of the responsible land management agency. To reduce the likelihood of spread of fires. To undertake mosaic burning.	As appropriate to achieve land management, e.g. heritage and/or fire protection e.g. broad scale mosaic burning objectives.
Fire Exclusion Zone	To exclude bush fires.	N/A	Variable dependant on size of fire sensitive area requiring protection.

Disclaimer
The The Hills BFMC makes every effort to ensure the quality of the information available on this map. Before relying on the information on this map, users should carefully evaluate its accuracy, completeness and relevance for their purposes, and should obtain any appropriate professional advice relevant to their particular circumstances.

The The Hills BFMC can not guarantee and assumes no legal liability or responsibility for the accuracy, currency or completeness of the information. Copyright: The Hills BFMC 2019.

Authorized by of The Hills BFMC.
Date created: Friday, 10 May 2019

BFRMP version 2.1.26.0



Map Ref	Asset name	Asset type	Subtype	Risk level	Priority	Treatment
NA	Telstra Infrastructure/Communications	Economic	Infrastructure	Very High	2A	T33
NA	Endeavour Energy Network	Economic	Infrastructure	Very High	2A	T34
88	Baulkham Hills (Sophia Doyle Reserve)	Human	Residential	Very High	2A	T1;17,30
92	Fern Gully Child Care Centre	Human	Special Fire	Very High	2A	T26
93	West Pennant Hills (Excelsior/Bidjigal)	Human	Residential	Very High	2A	T16;17;19;2
94	West Pennant Hills (Excelsior Reserve)	Human	Residential	Very High	2A	T1;17
95	West Pennant Hills (Excelsior Reserve)	Human	Residential	Very High	2A	T1;16;17;18
96	West Pennant Hills (Sanctuary Point to)	Human	Residential	Very High	2A	(1)
98	West Pennant Hills (Excelsior/Bidjigal)	Human	Residential	Very High	2A	T19;16;17
99	West Pennant Hills (Bidjigal Reserve)	Human	Residential	Very High	2A	(2)
100	West Pennant Hills (Excelsior/Bidjigal)	Human	Residential	Very High	2A	T19;17;16
101	West Pennant Hills (Excelsior/Bidjigal)	Human	Residential	Very High	2A	(3)
102	West Pennant Hills (Richard Webb)	Human	Residential	Very High	2A	T1;17
103	West Pennant Hills (Cumberland State)	Human	Residential	Very High	2A	T28;1;17;15
155	West Pennant Hills (Russell)	Human	Residential	Very High	2A	T17;25;1;24
156	West Pennant Hills (The Glade)	Human	Residential	Very High	2A	T14;15;17
314	FRNSW CFU	Economic	Infrastructure	Medium	4	T35
315	FRNSW CFU	Economic	Infrastructure	Medium	4	T35
316	FRNSW CFU	Economic	Infrastructure	Medium	4	T35
317	FRNSW CFU	Economic	Infrastructure	Medium	4	T35
318	FRNSW CFU	Economic	Infrastructure	Medium	4	T35
334	Hills Community Care Building NSP	Human	Other	Low	NA	T38
335	George Thomson Reserve Open Space	Human	Other	Low	NA	T36

(1):T25;24;17;19

(2):T20;21;23;17

(3):T24;16;16;17

The Hills BFMC Bush Fire Risk Management Plan 2019

North Rocks - Map Display Area

Map 4 of 4

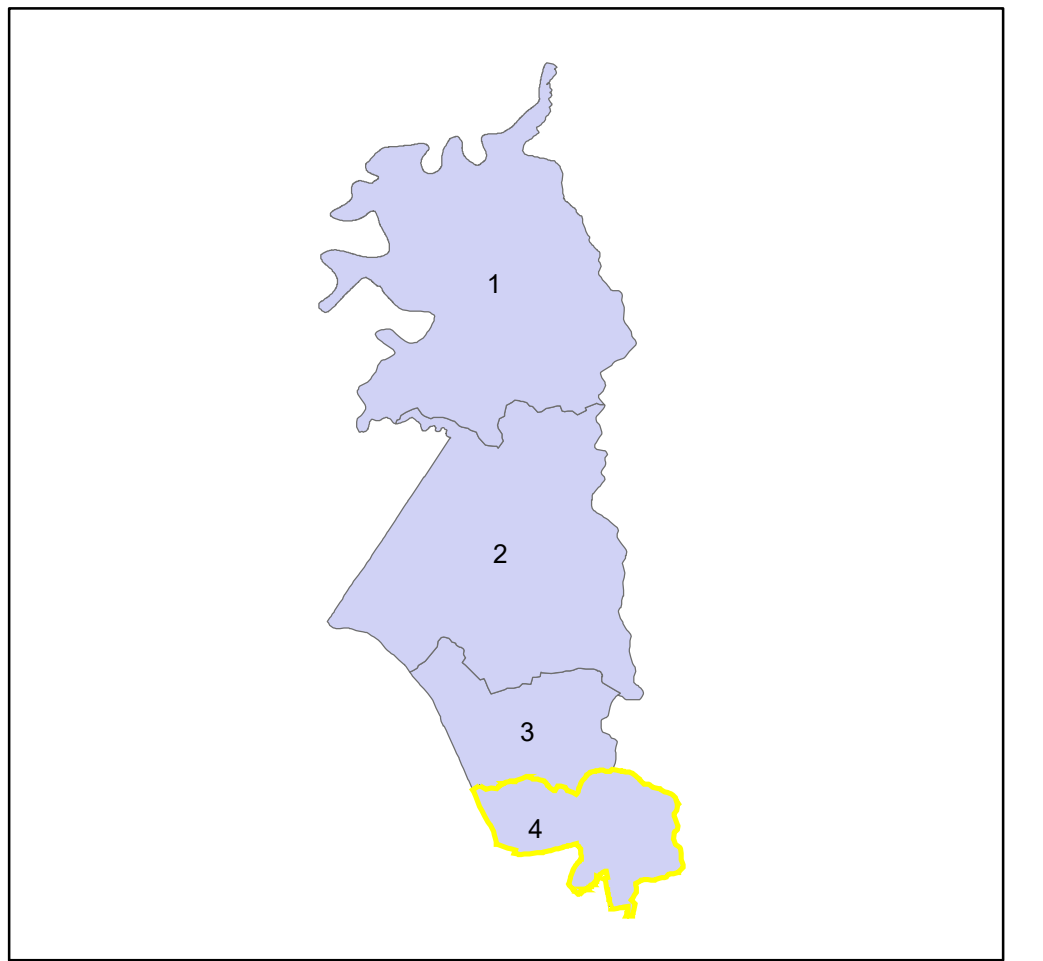
This Bush Fire Risk Management Plan (BFRMP) has been prepared by the The Hills Bush Fire Management Committee (BFMC) pursuant to section 52 of the *Rural Fires Act 1997*.

The aim of this BFRMP is to reduce the adverse impact of bush fires on life, property and the environment.

The objectives of this BFRMP are to:

- reduce the number of human-induced bush fire ignitions that cause damage to life, property or the environment;
- manage fuel to reduce the spread and intensity of bush fires while minimising environmental/ecological impacts;
- reduce the community's vulnerability to bush fires by improving its preparedness; and
- effectively contain fires with a potential to cause damage to life, property and the environment.

This map forms part of the BFRMP for the The Hills BFMC, covering the local government areas of The Hills. It should be viewed in conjunction with the accompanying BFRMP document which provides further details on the BFMC area, the assets assessed and the risk assessment process used.



Review
Under the *Rural Fires Act 1997* this plan must be reviewed and updated within each successive five year period following the constitution of the BFMC. The The Hills BFMC will also review this plan as necessary. This may be triggered by a range of circumstances, including but not limited to:

- changes to the BFMC area, organisational responsibilities or legislation;
- changes to the bush fire risk in the area; or
- following a major fire event.

Assets

This BFRMP identifies the assets that are considered by the The Hills BFMC and community to be at risk from bush fires, assesses the bush fire risk to each asset and assigns treatments designed to mitigate the risk. Assets in the BFMC area identified as requiring treatments are listed in the assets table. Other assets within the BFMC area that were assessed as not requiring treatments within the life of the plan are listed in the appendix to the BFRMP document. The Map Ref number "NA" denotes non-spatial assets.

Treatments

Specific treatments assigned to assets in the The Hills area are listed in the treatments table and linked to the assets which they are designed to protect. Standard BFMC wide treatments (i.e. not linked to a specific asset) which occur on an ongoing basis within the BFMC area are:

- reviewing the bush fire prone land map;
- ensuring developments in the bush fire prone land comply with Planning for Bush Fire Protection;
- using the Local Environment Plan's (LEPs) to control development in areas with a bush fire risk;
- varying the standard bush fire danger period as required;
- requiring permits during bush fire danger periods
- prosecution of arsonists/offenders
- investigation of bush fire cause;
- normal fire suppression activities;
- assessing and managing compliance with strategic fire-fighting resource allocation management systems;
- preparation of a S2 Operations Coordination Plan;

Note on LNZ: All areas not specifically mapped as an APZ, SFAZ or FEZ are considered as LNZ for this risk management plan. For areas identified by an LNZ polygon on the map, please refer to the BFRMP document for the specific land management objectives.

Zone	Purpose	Suppression	Zone
Asset Protection Zone	To protect human life, property and highly valued public assets and values.	To enable the safe use of Direct Attack suppression strategies within the zone. To minimise bush fire impacts on undefended assets.	As per RFS document <i>Standards for Asset Protection Zones</i> .
Strategic Fire Advantage Zone	To provide strategic areas of fire protection advantage which will reduce the speed and intensity of bush fires, and reduce the potential for spot fire development. To aid containment of wildfires to existing management boundaries.	To improve the likelihood and safe use of Parallel Attack suppression strategies within the zone. Indirect Attack (back burning) in high to very high fire weather conditions within the zone. To reduce the likelihood of: Crown fire development within the zone, and/or Spot fire ignition potential from the zone.	Zone width related to suppression objectives and dependant upon: - Topography - Aspect - Location of adjacent fire breaks - Mosaic pattern of treatment Assess Overall Fuel Hazard (OFH) once vegetation communities reach minimum fire thresholds within this plan. Management practices should aim to achieve mosaic fuel reduction patterns so that the majority of the SFAZ has an OFH of less than high.
Land Management Zone	To meet relevant land management objectives in area where APZs or SFAZs are not appropriate.	As per the land management and fire protection objectives of the responsible land management agency. To reduce the likelihood of spread of fires. To undertake mosaic burning.	As appropriate to achieve land management, e.g. heritage and/or fire protection e.g. broad scale mosaic burning objectives.
Fire Exclusion Zone	To exclude bush fires.	N/A	Variable dependant on size of fire sensitive area requiring protection.

Disclaimer

The The Hills BFMC makes every effort to ensure the quality of the information available on this map. Before relying on the information on this map, users should carefully evaluate its accuracy, completeness and relevance for their purposes, and should obtain any appropriate professional advice relevant to their particular circumstances.

The The Hills BFMC can not guarantee and assumes no legal liability or responsibility for the accuracy, currency or completeness of the information. Copyright: The Hills BFMC 2019.

Authorized by of The Hills BFMC.

Date created: Friday, 10 May 2019

BFRMP version 2.1.26.0