

South West Slopes Bush Fire Management Committee

Bush Fire Risk Management Plan

Table of Contents

<i>Glossary</i>	6
<i>Chapter 1. Introduction</i>	7
1.1 Background	7
1.2 Aim and Objectives	7
1.3 Description of the South West Slopes BFMC Area	8
1.3.1 Location and land tenure	8
1.3.2 Climate and bush fire season	8
1.3.3 Population and demographic information	8
1.3.4 History of bush fire frequency and ignition cause	8
<i>Chapter 2. Identifying and Assessing the Bush Fire Risk</i>	10
2.1 Process	10
2.2 Communication and Consultation	10
2.3 Identifying the Bush Fire Risk	11
2.3.1 Assets	11
2.3.2 Assessing the Bush Fire Risk - Consequence	12
2.3.3 Assessing the Bush Fire Risk - Likelihood	12
2.3.4 Identifying the level of risk	13
2.3.5 Evaluating the Bush Fire Risk	13
2.3.6 Prioritising Treatments	13
2.3.7 Risk Acceptability	13
<i>Chapter 3. Treating the Risk</i>	14
3.1 Bush Fire Management Zones	14
3.2 BFMC Wide Treatments	16
3.3 Asset Specific Treatments	17
3.4 Fire Thresholds	18
3.5 Annual Works Programs	18
3.6 Implementation	19
<i>Chapter 4. Performance Monitoring and Reviewing</i>	20
4.1 Review	20
4.2 Monitoring	20
4.3 Reporting	20
4.4 Performance Measurements	20
<i>Appendix 1 Community Participation Strategy</i>	21
<i>Appendix 2 Asset Register</i>	23
<i>Appendix 3 Treatment Register</i>	42
<i>Appendix 1 - 6 Maps</i>	30

List of Tables

<i>Table 1.1 Land tenure</i>	8
<i>Table 3.1 Bush Fire Management Zones: Purpose, objectives and characteristics</i>	15
<i>Table 3.2 Asset specific treatments used in the South West Slopes BFMC area</i>	17
<i>Table 3.3 Fire Thresholds for Vegetation Categories</i>	18

List of Figures

<i>Figure 2.1 Overview of the risk assessment process</i>	10
---	----

Authorisation

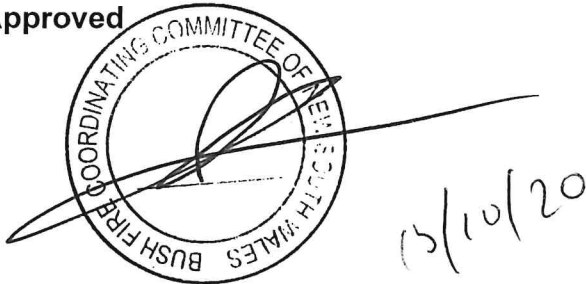
In accordance with Part 3 Division 4 of the Rural Fires Act 1997, this Plan has been prepared by the South West Slopes Bush Fire Management Committee and has been endorsed at the BFMC meeting on 18 October 2018 for submission to the Bush Fire Coordinating Committee.

Recommended



Brian Ingram
Chairperson
South West Slopes Bush Fire Management Committee

Approved



On behalf of the
NSW Bush Fire Coordinating Committee

Amendment List

Amendment		Entered	
Number	Date	Signature	Date

Glossary

Assets: anything valued by the community which includes houses, crops, heritage buildings and places, infrastructure, the environment, businesses, and forests, that may be at risk from bush fire.

Bush Fire: a general term used to describe fire in vegetation, includes grass fire.

Bush Fire Hazard: the potential severity of a bush fire, which is determined by fuel load, fuel arrangement and topography under a given climatic condition.

Bush Fire Risk: the chance of a bush fire igniting, spreading and causing damage to the community or the assets they value.

Bush Fire Risk Management: a systematic process that provides a range of treatments, which contribute to the well-being of communities and the environment, which suffer the adverse effects of wildfire/bush fire.

Bush Fire Threat: potential bush fire exposure of an asset due to the proximity and type of a hazard and the slope on which the hazard is situated.

Consequence: outcome or impact of a bush fire event.

Fire Fighting Authorities: the NSW Rural Fire Service, NSW Fire Brigades, the National Parks and Wildlife Service and Forests NSW.

Likelihood: the chance of a bush fire igniting and spreading.

Major Bush Fire: A bush fire which requires the attendance of multiple brigades, or causes damage to property or injury to one or more persons.

Display area: geographic area determined by the Bush Fire Management Committee which is used to provide a suitable area and scale for community participation and mapping display purposes.

Recovery costs: the capacity of an asset to recover from the impacts of a bush fire.

Risk Acceptance: an informed decision to accept the consequences and the likelihood of a particular risk.

Risk Analysis: a systematic process to understand the nature of and to deduce the level of risk.

Risk Assessment: the overall process of risk identification, risk analysis and risk evaluation.

Risk Identification: the process of determining what, where, when, why, and how something could happen.

Risk Treatment: the process of selection and implementation of measures to modify risk.

Vulnerability: the susceptibility of an asset to the impacts of bush fire.

Chapter 1. Introduction

1.1 Background

Under the *Rural Fires Act 1997* the Bush Fire Coordinating Committee (BFCC) must constitute a Bush Fire Management Committee (BFMC) for each area in the State, which is subject to the risk of bush fires. Each BFMC is required to prepare and submit to the BFCC a draft Bush Fire Risk Management Plan (BFRMP).

A BFRMP is a strategic document that identifies community assets at risk and sets out a five-year program of coordinated multi-agency treatments to reduce the risk of bush fire to the assets. Treatments may include such things as hazard reduction burning, grazing, community education, fire trail maintenance and establishing community fireguard groups.

Annual programs to implement the treatments identified in this plan will be undertaken by the relevant land managers and fire fighting authorities.

In exercising its functions under the *Rural Fires Act 1997*, including the preparation of a draft bush fire risk management plan, the South West Slopes BFMC is required to have regard to the principles of ecologically sustainable development (ESD).

This document and the accompanying maps together form the BFRMP for the South West Slopes BFMC area.

This BFRMP has been prepared by the South West Slopes BFMC and covers both public and private lands. This BFRMP must be reviewed and updated within each successive five-year period from the constitution of the BFMC.

The BFCC recognises that climate change has the potential to increase bush fire risk. The risk assessment process applied in this BFRMP is based on current climatic conditions. The BFCC will monitor information on climate change and will modify the process when necessary.

1.2 Aim and Objectives

The **aim** of this BFRMP is to minimise the risk of adverse impact of bush fires on life, property and the environment.

The **objectives** of this BFRMP are to:

- reduce the number of human-induced bush fire ignitions that cause damage to life, property and the environment;
- manage fuel to reduce the rate of spread and intensity of bush fires, while minimising environmental/ecological impacts;
- reduce the community's vulnerability to bush fires by improving its preparedness; and
- effectively contain fires with a potential to cause damage to life, property and the environment.

1.3 Description of the South West Slopes BFMC Area

1.3.1 Location and land tenure

The South West Slopes BFMC area is located in the South West Slopes region of New South Wales and includes the Local Government Areas of Hilltops and Cootamundra-Gundagai Regional Council.

The area covered by the South West Slopes BFMC is 1,112,000 hectares and includes the land tenures outlined in Table 1.1.

Land Manager*	% of BFMC area
National Parks & Wildlife Service	2.1%
DPI - Lands	0.6%
Local Government	0.5%
Private	95.3%
Forest Corporation NSW	1.3%
All Other	0.2%

Table 1.1 Land Tenure

1.3.2 Climate and bush fire season

The typical / average climate in the South West Slopes BFMC area is temperate climate with winter / spring rainfall averaging 600mm and the bush fire season generally runs from October to March although prolonged dry periods has seen the South West Slopes BFMC extend the bush fire danger period into April.

Prevailing weather conditions associated with the bush fire season in the South West Slopes BFMC area are North-Westerly to South-Westerly winds accompanied by high daytime temperatures and low relative humidity. There are also frequently dry lightning storms occurring during the bush fire season.

1.3.3 Population and demographic information

The population of the South West Slopes BFMC area is approximately 29,640 people. The major population centres are Boorowa, Cootamundra, Gundagai, Harden and Young. The following issues have been identified within the South West Slopes BFMC area as potentially impacting on the ability of certain sections of the community to prepare themselves for bush fire: population changes associated with the stone fruit industry, large numbers of property owners travelling out of area for harvesting operations and seasonal work, and an ageing population.

1.3.4 History of bush fire frequency and ignition cause

The South West Slopes BFMC area has on average 97 bush, grass, and scrub fires per year, of which two on average can be considered to be major fires.

The main sources of ignition in the South West Slopes BFMC area are:

- Harvesting operations and farm machinery
Fires associated with harvesting operations of cereal and oilseed crops are normally due to mechanical failure or poor maintenance of equipment and machinery. This period of incident is generally limited to the months of November and December

- **Lightning**
Ignitions resulting from lightning activity generally occur November to January. Fires resulting from lightning strikes are not limited to any one area of the South West Slopes BFMC. Lightning activity associated with storms may contain various levels of precipitation. Dependent upon the level of precipitation may result in an immediate ignition or ignition some days following storm activity.
- **Escape from legal and Illegal burning operations**
The majority of escape fires are a result of agriculture practices using fire to remove or reduce the level of crop residue from cereal and oilseed crops. Fires result from landholder's poor extinguishment or inadequate control measures being implemented for the use of fire. Fires being unattended, or use of fire in adverse or unfavourable weather conditions.
- **Accidental**
Generally, accidental ignitions occur as a result of motor vehicle accidents and through the use of equipment and machinery at inappropriate times of adverse fire weather. The use of slashing machinery, earthmoving plant, angle grinders, and welders have contributed to accidental ignitions

Chapter 2. Identifying and Assessing the Bush Fire Risk

2.1 Process

The Australia/New Zealand Standard *AS/NZS 4360: 2004 Risk Management* was used as the basis for the risk assessment process. See Figure 2.1 for the steps involved. For a detailed description of the process undertaken, see the Bush Fire Risk Management Planning Guidelines for Bush Fire Management Committees on the RFS website: www.rfs.nsw.gov.au.

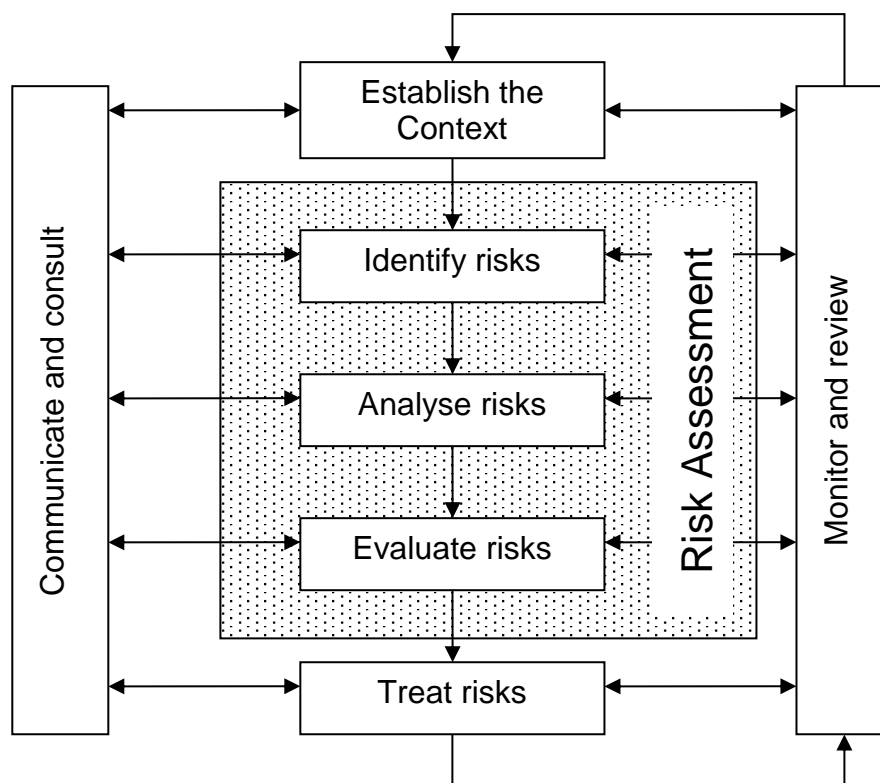


Figure 2.1 Overview of the risk assessment process

2.2 Communication and Consultation

Community participation is an integral part of risk management. The Community Participation Strategy involved developing and implementing a process to address the needs, issues and concerns of stakeholders within the BFMC area in regards to the BFRMP. See Appendix 1 for the Community Participation Strategy used by the South West Slopes BFMC in preparing this BFRMP.

2.3 Identifying the Bush Fire Risk

Identifying the level of bush fire risk firstly involved identifying important community assets considered to be at risk from bush fire in the South West Slopes BFMC area, and then assessing the likelihood and consequence ratings.

2.3.1 Assets

BFMC members and the community, including RFS volunteers, identified assets within the South West Slopes BFMC that they believed were at risk of bush fire.

The assets were divided into four asset types:

Human settlement

- Residential areas including urban bushland interface areas and rural properties;
- Special Fire Protection areas including schools, hospitals, nursing homes, and tourist facilities; and
- Other human settlement areas including commercial and industrial areas where distinct from major towns.
- Neighbourhood Safer Place (NSP) is defined by the *Rural Fires Act 1997* as *land or a building designated as a neighbourhood safer place under section 62C*. NSPs provide a place of last resort for people during a bush fire. All designated NSP locations for NSW are available at www.rfs.nsw.gov.au.

Economic

- Agricultural; e.g. major silos, regional saleyards, cropping/grazing land;
- Commercial/industrial e.g. major industries, waste treatment plants, sawmills;
- Infrastructure e.g. large power lines, gas and oil pipelines, railway lines, electricity substations, communication facilities;
- Tourist and recreational e.g. tourist sites and facilities, resorts, retreats;
- Mines;
- Commercial forests e.g. pine plantations, eucalypt plantations and commercial native forests; and
- Drinking water catchments.

Environmental

- Threatened species, populations and ecological communities and Ramsar wetlands;
- Locally important species and ecological communities, such as species and ecological communities especially sensitive to fire.

Cultural

- Aboriginal significance – Aboriginal places and items of significance;
- Non-indigenous heritage – places and items arising from the early occupation of NSW by European or other non-indigenous settlers; and
- Other cultural assets – community halls, clubs and recreational facilities.

See Appendix 2 for the full list of assets identified in the South West Slopes BFMC area. See maps 1 - 6 for the location of assets to be treated under this BFRMP

2.3.2 Assessing the Bush Fire Risk - Consequence

Once the assets were identified, the consequence of a bush fire impacting on these assets was assessed.

See Appendix 2 for the consequence ratings assigned to each asset identified in the South West Slopes BFMC area.

The different asset types had different assessment processes used to determine the consequence. These processes are identified below.

Human settlement

A potential fire behaviour model using vegetation type, slope and separation distance was used to produce a threat rating for human settlement assets. The vulnerability of the asset to a bush fire was also assessed and a rating assigned. These ratings were then used to assess the consequence of a bush fire impacting upon a human settlement asset.

Special Fire Protection (SFP) assets were considered inherently more vulnerable to bush fire due to mobility capacity, knowledge or other issues relating to their inhabitants, (e.g. the elderly, infirm, children or tourists) and therefore stricter requirements for vulnerability assessment and rating were applied. Due to circumstances surrounding NSPs and their use during a bush fire, stricter requirements for vulnerability assessment and rating will also apply to these assets.

Economic

The level of economic impact e.g. local, regional or state, as well as the economic recovery costs (how long and complicated a financial recovery will be) of the asset were identified. These ratings were used to assess the consequence of a bush fire impacting upon an economic asset.

Environmental

Environmental assets with known minimum fire threshold were assessed to determine if they were at risk of a bush fire within the 5 year life of the BFRMP using fire history *and fire threshold* data. Those environmental assets which were within or above the fire threshold were not assessed in the BFRMP, as the negative impact of a fire within the 5 year period was determined as being low and may even be of benefit to the asset and surrounding habitat.

The vulnerability of an environmental asset was determined by its conservation status and its geographic extent (distribution across the landscape). Vulnerability and potential impact of bush fire were used to assess the consequence of a bush fire impacting upon an environmental asset.

Cultural

For non-indigenous historical, Aboriginal and other cultural assets a potential fire behaviour model using fuel load, slope and proximity was used to produce a threat rating. The physical vulnerability of the asset to a bush fire was also assessed. These ratings were then used to assess the consequence of a bush fire impacting upon a cultural asset.

2.3.3 Assessing the Bush Fire Risk - Likelihood

For all asset types the likelihood of a bush fire occurring was assessed. This involves considering fire history, including ignition cause and patterns, known fire paths, access, containment potential and potential fire run (size of the vegetated area). See Appendix 2 for

the likelihood ratings assigned to each asset identified in the South West Slopes BFMC area.

2.3.4 Identifying the level of risk

The consequence and likelihood ratings were then used to identify the level of risk. See Appendix 2 for the risk ratings assigned to each asset identified in the South West Slopes BFMC area.

2.3.5 Evaluating the Bush Fire Risk

Once the risk ratings for each asset were identified, they were evaluated to:

- a) confirm that risk levels identified in the risk analysis process are appropriate and reflect the relative seriousness of the bush fire risk;
- b) identify which assets require treatments; and
- c) identify treatment priorities.

2.3.6 Prioritising Treatments

No organisation has limitless resources to deal with adverse risk. It is therefore necessary to define priorities. The bush fire risk ratings determined were used to prioritise the risk treatments, i.e. areas of extreme risk were considered first for treatment, then very high, then high then medium.

2.3.7 Risk Acceptability

The South West Slopes BFMC is not accepting any risk for assets identified in this Bush Fire risk Management Plan. Consequently, every asset has been assigned a specific treatment. Routine BFMC wide treatments will also be undertaken for these assets to further reduce the bush fire risk.

All NSPs for a BFMC area will require ongoing treatment by the applicable landowner to ensure that the asset remains viable as a place of last resort for people during a bush fire. Therefore, all NSP assets are allocated specific treatments in this Plan, regardless of the level of bush fire risk identified and the risk acceptability nominated by the South West Slopes BFMC.

Chapter 3. Treating the Risk

3.1 *Bush Fire Management Zones*

Bush Fire Management Zones were identified within the South West Slopes BFMC area and mapped (see maps 1 - 6). These zones identify the fire management intent for a specific area. See Table 3.1 for descriptions of the zones and their purposes. The four categories of Bush Fire Management Zones are:

- Asset Protection Zone (APZ);
- Strategic Fire Advantage Zone (SFAZ);
- Land Management Zone (LMZ); and
- Fire Exclusion Zone (FEZ).

Some of these zones (usually Land Management Zones) may be further classified within this category by the land manager, e.g. LMZ -Heritage Management Zone (NPWS).

Zone	Purpose	Suppression Objective(s)	Zone characteristics
Asset Protection Zone	To protect human life, property and highly valued public assets and values.	To enable the safe use of Direct Attack suppression strategies within the zone. To minimise bush fire impacts on undefended assets.	As per RFS document <i>Standards for Asset Protection Zones</i> .
Strategic Fire Advantage Zone	To provide strategic areas of fire protection advantage which will reduce the speed and intensity of bush fires, and reduce the potential for spot fire development; To aid containment of wildfires to existing management boundaries.	To improve the likelihood and safe use of: Parallel Attack suppression strategies within the zone. and/or Indirect Attack (back burning) in high to very high fire weather conditions within the zone. To reduce the likelihood of: Crown fire development within the zone. and/or Spot fire ignition potential from the zone.	Zone width related to suppression objectives and dependent upon: <ul style="list-style-type: none"> • Topography • Aspect • Spotting propensity • Location of adjacent firebreaks • Mosaic pattern of treatment Assess Overall Fuel Hazard (OFH) once vegetation communities reach minimum fire thresholds within this plan. Management practices should aim to achieve mosaic fuel reduction patterns so that the majority of the SFAZ has an OFH of less than high.
Land Management Zone	To meet relevant land management objectives in areas where APZs or SFAZs are not appropriate.	As per the land management and fire protection objectives of the responsible land management agency. To reduce the likelihood of spread of fires. To undertake mosaic burning	As appropriate to achieve land management e.g. heritage and/or fire protection e.g. broad scale mosaic burning objectives.
Fire Exclusion Zone	To exclude bush fires.	N/A	Variable dependant on size of fire sensitive area requiring protection.

Table 3.1 Bush Fire Management Zones: Purpose, objectives and characteristics

NB: OFH refers the Overall Fuel Hazard Guide as described in the document published by (Dept. of Sustainability and Environment 3rd ed. 1999 & NPWS version); State-wide procedures for assessment of fuel hazard will be developed in conjunction with the BFCC.

Note: All areas that are not mapped or described as APZs or SFAZs are considered as LMZs.

For the purpose of the Bush Fire Environmental Assessment Code:

1. Plantations that are approved under the *Plantations & Reafforestation Act 1999* after closure of the public exhibition period for this BFRMP are considered to be identified in this BFRMP; and
2. Retained vegetation within the aforementioned plantations is considered to be a Strategic Fire Advantage Zone identified in the text of this BFRMP as long as it meets the suppression objectives for SFAZs included in the BFRMP, and is not mapped or otherwise described as a Fire Exclusion Zone in the BFRMP.

3.2 BFMC Wide Treatments

BFMC wide treatments are activities which reduce the overall bush fire risk within the BFMC area and are undertaken on an ongoing basis as part of normal business. These treatments are not linked to specific assets in the BFRMP, rather they are applied across all or part of the BFMC area as designated by legislation or agency policy. BFMC wide treatments include the following:

- **Reviewing the bush fire prone land map**

These maps identify bush fire prone land and are used to trigger whether a development application is assessed using *Planning for Bush Fire Protection*¹.

- **Ensuring developments in bush fire prone land comply with *Planning for Bush Fire Protection***

This assessment process requires new applications for development to include bush fire protection measures.

- **Using the Local Environment Plan/s (LEPs) to control developments in areas with a bush fire risk**

LEPs can be used to exclude development in extreme bush fire risk areas or where bush fire protection measures cannot be incorporated.

- **Varying the standard bush fire danger period as required**

In years where the weather is particularly adverse the bush fire danger period may be brought in early or extended. This is assessed every year by the BFMC.

- **Requiring permits during the bush fire danger period**

In the bush fire danger period a fire safety permit is required to light a fire in the open. Permits specify conditions such as firefighting equipment that must be on site, or restrict burns based on weather conditions.

- **Prosecution of arsonists/offenders**

Under the *Rural Fires Act 1997* persons may be prosecuted for breaching the conditions on a fire permit, lighting a fire during a Total Fire Ban, allowing fire to escape their property, or other breaches of the Act.

- **Investigation of bush fire cause**

All bush fires which do not have a known cause are investigated to identify how they started.

- **Normal fire suppression activities**

Responding to bush fire is a normal business activity for the fire fighting authorities.

- **Assessing and managing compliance with strategic fire fighting resource allocation provisions**

Strategic fire fighting resource allocation provisions is the process used to identify the number of stations, brigades and appliances required in an area, and considers members, training, assets and hazards.

¹ NSW Rural Fire Service 2006 *Planning for Bush Fire Protection: A guide for councils, planners, fire authorities and developers*.

- **Preparation of a S52 Operations Coordination Plan**

The Operations Coordination Plan is prepared biannually and sets out how coordinated fire fighting will occur. It includes specific operational restrictions on fire fighting techniques in certain areas, where fires will be managed from, and how agencies involved can communicate during operations.

- **Fire Management Plans or Plans of Management**

Some land management agencies have developed fire management plans or plans of management with specific fire or fuel management strategies, for example a Forestry Corporation NSW Regional Fuel Management Risk Plan, a NPWS Fire Management Strategy. These publicly exhibited plans form the basis for operational fire planning on public parks, reserves and forests.

- **Bush Fire Hazard Complaints**

If someone is concerned about possible bush fire hazards on a neighbouring property or any other land, then this can be reported to the RFS Commissioner or their local RFS Fire Control Centre. The complaint will be investigated and may result in a notice being issued to the landowner or manager to reduce the hazard.

3.3 Asset Specific Treatments

There are five broad strategy groups available to treat the bush fire risk to assets identified in the BFRMP.

The types of asset specific treatments in each strategy group used in the South West Slopes BFMC area are listed below. A full list of the treatment strategies in the South West Slopes BFMC area are in Appendix 3.

Strategy	Targeted treatments used in the South West Slopes BFMC area
Ignition Management	Implement duty roster for manning of fire towers. Implement solid fuel fire ban as required. Restrict Forest Ops – Forestry operations as per the FCNSW Forest Practices Code.
Hazard Reduction	Implement grazing program on Forestry Corp NSW land only in areas suitable for grazing management. Inspect SFAZ and maintain when required. Maintain APZ as per NPWS Fire Management Strategy. Manage fuel loads as per NPWS Fire Management Strategy. Manage power line easement clearances. Maintain APZ on an annual basis. Maintain a strategic break around villages. Maintain fuels in accordance with guidelines.
Community Education	Publish media releases at the start of the fire season. Media campaign during the bush fire danger period. Implement Section 63 inspection program. Conduct education sessions at primary schools.
Property Planning	Develop Community Protection Plans.
Preparedness	Implement the SWSZ Pre Incident Plan as required. Undertake routine maintenance of fire trails in line with FAFT Plan.

Table 3.2 Asset specific treatments used in the South West Slopes BFMC area

3.4 Fire Thresholds

Vegetation formation	Minimum SFAZ Threshold	Minimum LMZ Threshold	Maximum Threshold	Notes
Rainforest	NA	NA	NA	Fire should be avoided.
Alpine complex	NA	NA	NA	Fire should be avoided.
Wet Sclerophyll forest (shrubby subformation)	25	30	60	Crown fires should be avoided in the lower end of the interval range.
Wet Sclerophyll forest (grassy subformation)	10	15	50	Crown fires should be avoided in the lower end of the interval range.
Grassy woodland	5	8	40	Minimum interval of 10 years should apply in the southern Tablelands area. Occasional intervals greater than 15 years may be desirable.
Grassland	2	3	10	Occasional intervals greater than 7 years should be included in coastal areas. There was insufficient data to give a maximum interval; available evidence indicates maximum intervals should be approximately 10 years.
Dry sclerophyll forest (shrub/grass subformation)	5	8	50	Occasional intervals greater than 25 years may be desirable.
Dry sclerophyll forest (shrub subformation)	7	10	30	Occasional intervals greater than 25 years may be desirable.
Heathlands	7	10	30	Occasional intervals greater than 20 years may be desirable.
Freshwater wetlands	6	10	35	Occasional intervals greater than 30 years may be desirable.
Forested wetlands	7	10	35	Some intervals greater than 20 years may be desirable.
Saline wetlands	NA	NA	NA	Fire should be avoided.
Semi-arid woodlands (grassy subformation)	6	9	No max	Not enough data for a maximum fire interval.
Semi-arid woodlands (shrubby subformation)	10	15	No Max	Not enough data for a maximum fire interval.
Arid shrublands (chenopod subformation)	NA	NA	NA	Fire should be avoided.
Arid shrublands (acacia subformation)	10	15	No Max	Not enough data for a maximum fire interval.

Table 3.3 Fire Thresholds for Vegetation Categories

3.5 Annual Works Programs

The land management agencies and fire fighting authorities responsible for implementing the treatments identified in this plan will include those treatments in their annual works programs detailing how, when, and where the required activities will be undertaken.

3.6 Implementation

When the treatments identified in this BFRMP are implemented there are a number of issues that need to be considered by the responsible agency including environmental assessments and approvals, smoke management and prescribed burn plans.

Local permit issuing/hazard reduction burning exclusion periods

In the South West Slopes BFMC area the issuing of permits and hazard reduction burning is not permitted during December and January unless a significant amount of unseasonal rainfall has occurred.

Chapter 4. Performance Monitoring and Reviewing

4.1 Review

This BFRMP must be reviewed and updated within each successive five-year period from the constitution of the BFMC. The South West Slopes BFMC will also review this plan as necessary to account for any changes in context or risk. This may be triggered by a range of circumstances, including but not limited to:

- changes to the BFMC area, organisational responsibilities or legislation;
- changes to the bush fire risk in the area; or
- following a major fire event.

4.2 Monitoring

The BFMC is required to monitor progress towards the completion of treatment works listed in the BFRMP, and the timeliness of the works.

4.3 Reporting

The BFMC is required to report annually to the BFCC on its progress in implementing the bush fire risk management activities identified in this plan.

4.4 Performance Measurements

State wide performance measurements which are linked to the BFRMP have been identified by the BFCC. All BFMCs must use these to monitor and report on their success in reducing the bush fire risk in their BFMC area.

Appendices

Appendix 1 Community Participation Strategy

Background

The South West Slopes Bush Fire Management Committee (BFMC) is made up of stakeholders that have a requirement to manage land within the jurisdiction of the BFMC area.

Each of those stakeholders have a requirement to have representation on the BFMC and to report to the BFMC on the works undertaken to reduce the risk of fire across the area the BFMC is responsible for.

The BFMC must produce a plan, or update an existing plan, which deals with risk management. This plan maps assets, which are then assigned and risk level. The plan also determines which risks the BFMC area has the ability to treat. Treatments are assigned to assets accordingly.

A Bush Fire Risk Management Plan (BFRMP) needs to be acceptable to the communities that the plan area covers. To assist with this process, under statutory requirements, the BFRMP must be placed on Public Exhibition for 40 days. A Communications Strategy is also required to ensure the widest range of members within the community have access to and opportunity to comment on, the plan.

Strategy

All members of the BFMC have a requirement to advertise the BFRMP within the realm of the capabilities of their organisation. Not all member organisations of the BFMC area have a capacity to connect with the community, or are even present in a local sense, within the plan area.

As such, dissemination of information is often left to the lead land management agencies and the NSW RFS. The NSW RFS are often responsible for the administration associated with production of the document and ensuring it is placed on public exhibition in strategic locations.

Types of Exhibition available within the South West Slopes BFMC area

Public Exhibition available of hard copy documents:

- Hilltops Council and Cootamundra-Gundagai Regional Council and the South West Slopes Zone (SWSZ) Fire Control Centre will display hard copy maps and provided copies of the written document for the period of the public exhibition.

Websites:

- Both Hilltops and Cootamundra – Gundagai Regional Councils have functional and regularly visited websites. The BFRMP will be placed on both of these websites for the duration of the public exhibition period.

Facebook:

- Facebook is now a vital source of information for the general public. The SWSZ RFS has an active Facebook page and the plan will be highlighted on this throughout the public exhibition phase.

Media:

- A Media release will be sent to all local media outlets highlighting the exhibition of the BFRMP. It is anticipated that several slots in local news are likely to broadcast information on the BFRMP
- Public notices will be placed in the Boorowa News, Harden Express, Cootamundra Herald, Gundagai Independent and the Young Witness Newspapers.

Newsletters:

- The BFRMP will be featured in the South West Slopes Zone NSW RFS E- Newsletter. This newsletter is emailed to over 600 RFS members. The story will highlight the features of the plan and the exhibition process/period.

Public Meetings:

- All brigades (61) within the South West Slopes Zone hold their annual general meetings between April and September. The BFRMP will be discussed at the majority of these meetings.
- The BFRMP has also been given exposure at other meetings across the district where it was appropriate (Senior Management Team meetings Consultative Gum Tree Meetings)

The South West Slopes BFRMP was placed on public exhibition on 29 August 2018.

The Plan received nil submissions following the exhibition process.

The BFRMP was submitted to the BFCC on 1 March 2019.

Appendix 2 Asset Register

Map ref No.	Asset type	Asset sub type	Asset name	Asset Location	LGA	Display area	Likelihood	Consequence	Risk	Priority	Treatment No.
1	Economic	Commercial Forest	Plantations Pine	All BFMC AREA	Tumut	Gundagai East; Gundagai West;	Almost certain	Catastrophic	Extreme	1A	10;11;18;12;13;14;15;16;17;19
1	Economic	Commercial Forest	Plantations Pine	All BFMC AREA	Tumut	Gundagai East; Gundagai West;	Almost certain	Catastrophic	Extreme	1A	10;11;18;12;13;14;15;16;17;19
2	Cultural	Aboriginal Significance	Aboriginal Site		Hilltops	Central	Likely	Catastrophic	Extreme	1B	20
3	Human Settlement	Special Fire Protection	Rugby School		Hilltops	East	Likely	Major	Very High	2A	21;22
4	Human Settlement	Residential	Reids Flat Village		Hilltops	East	Likely	Major	Very High	2A	21;22
5	Cultural	Aboriginal Significance	Aboriginal Sites		Hilltops	Central	Likely	Major	Very High	2A	20
6	Cultural	Aboriginal Significance	Aboriginal Site		Hilltops	Central;East ;South;West	Likely	Major	Very High	2A	20
7	Human Settlement	Residential	Rugby Village		Hilltops	East	Likely	Major	Very High	2A	21;22
8	Human Settlement	Other	Stockinbingal Recreation Ground - NSP	Stockinbingal Recreation Ground, Cnr O'Brien and Duduaman St,	Hilltops	West	Likely	Major	Very High	2A	27
9	Human Settlement	Other	Muttama RFS Shed - NSP	Muttama RFS Station, Bridge St,	Hilltops	Gundagai West	Likely	Major	Very High	2A	26
10	Human Settlement	Other	Kingsvale RFS Station - NSP	Kingsvale RFS Station, Kingsvale Rd, Kingsvale	Hilltops	Central	Likely	Major	Very High	2A	23
11	Human Settlement	Other	Nangus RFS Station - NSP	Nangus RFS Station, Nangus - Junee , NangusRd	Hilltops	Gundagai West	Likely	Major	Very High	2A	25
12	Human Settlement	Other	Monteagle RFS Station - NSP	Monteagle RFS Station	Hilltops	Central	Likely	Major	Very High	2A	24
13	Economic	Infrastructure	ARTC Main Southern Rail Line	CGRC and Hilltops LGA	Cootamundra-Gundagai	South	Almost certain	Moderate	Very High	2C	28
0	Economic	Infrastructure	Cootamundra to Parkes Rail line	Cootamundra - Stockinbingal - Milvale - Bribbaree	Hilltops	undefined	Likely	Moderate	High	3A	40
14	Human Settlement	Residential	Old Wheeo Road		Hilltops	East	Likely	Moderate	High	3A	29
15	Economic	Infrastructure	Optus Hut - Kilrush Rd, Cootamundra		Cootamundra-Gundagai	South	Likely	Moderate	High	3A	32
16	Economic	Infrastructure	Pudman Creek Telephone Exchange		Hilltops	East	Likely	Moderate	High	3A	31
17	Cultural	Aboriginal Significance	Aboriginal Site		Hilltops	West	Likely	Moderate	High	3A	20
18	Economic	Infrastructure	Coppabella Hill Communications Tower		Hilltops	South	Likely	Moderate	High	3A	34
19	Economic	Infrastructure	Harden Electricity Substation		Hilltops	Central	Likely	Moderate	High	3A	35
20	Economic	Infrastructure	Cootamundra Electrical Substation		Cootamundra-Gundagai	South	Likely	Moderate	High	3A	35
21	Economic	Infrastructure	Young Electrical Substation		Hilltops	Central	Likely	Moderate	High	3A	35
22	Economic	Infrastructure	Boorowa Electricity Substation		Hilltops	East	Likely	Moderate	High	3A	35
23	Human Settlement	Special Fire Protection	Maimuru School		Hilltops	West	Likely	Moderate	High	3A	30;33
24	Economic	Infrastructure	Hampstead Telephone Exchange		Hilltops	West	Likely	Moderate	High	3A	31
25	Cultural	Aboriginal Significance	Aboriginal Site		Hilltops	East	Likely	Moderate	High	3A	20
26	Human Settlement	Residential	Bribbaree Village		Hilltops	West	Likely	Moderate	High	3A	21;22;36
27	Economic	Infrastructure	Rocky Hill Communications Tower		Hilltops	Central	Likely	Moderate	High	3A	34
28	Human Settlement	Residential	Monteagle Village		Hilltops	Central	Likely	Moderate	High	3A	21;22

29	Human Settlement	Residential	Koorawatha Village		Hilltops	Central	Likely	Moderate	High	3A	21;22;36;37
30	Human Settlement	Residential	Rye Park Village		Hilltops	East	Likely	Moderate	High	3A	21;22
31	Human Settlement	Residential	Stockinbingal Village		Cootamundra-Gundagai	West	Likely	Moderate	High	3A	21;22;36
32	Human Settlement	Residential	Maimuru Settlement	Maimuru	Hilltops	West	Likely	Moderate	High	3A	21;22
33	Economic	Infrastructure	Rosemont Radio Tower	Rosemont	Cootamundra-Gundagai	South	Likely	Moderate	High	3A	38
34	Human Settlement	Other	Bendick Murrell Recreation Hall - NSP	Bendick Murrell Hall, Bendick Murrell Rd, Bendick Murrell	Hilltops	Central	Likely	Moderate	High	3A	39
35	Human Settlement	Residential	Murringgo Village		Hilltops		Likely	Moderate	High	3A	21;22
36	Human Settlement	Other	Reids Flat Showground NSP	Reids Flat Showground	Hilltops	undefined	Likely	Moderate	High	3A	41
37	Human Settlement	Residential	Carinya Estate		Hilltops	Central	Unlikely	Catastrophic	High	3C	42
0	Economic	Agricultural	Agricultural land cropping		Hilltops	Central;East ;South;West	Likely	Minor	Medium	4	49;50;51
0	Economic	Agricultural	Travelling Stock Routes		Hilltops	Central;East ;South;West	Likely	Minor	Medium	4	62
0	Economic	Agricultural	Agricultural land grazing		Hilltops	Central;East ;South;West	Likely	Minor	Medium	4	49;57;50
0	Economic	Infrastructure	Country Energy Power Lines		Cootamundra-Gundagai Hilltops	Central;East ;South;West	Likely	Minor	Medium	4	58;81
0	Economic	Infrastructure	Gas pipeline		Cootamundra-Gundagai Hilltops	Central;East ;South;West	Unlikely	Major	Medium	4	60
38	Economic	Infrastructure	Wombat Telephone Exchange		Hilltops	Central	Likely	Minor	Medium	4	31
39	Economic	Infrastructure	Super Radio Network Tower (2LF)		Hilltops	Central	Likely	Minor	Medium	4	48
40	Economic	Infrastructure	Thuddungra Telephone Exchange		Hilltops	West	Likely	Minor	Medium	4	31
41	Economic	Infrastructure	Kingsvale Telephone Exchange - Kingsvale village		Hilltops	Central	Likely	Minor	Medium	4	31
42	Economic	Infrastructure	Frogmore Telephone Exchange		Hilltops	East	Likely	Minor	Medium	4	31
43	Economic	Infrastructure	Crowther Telephone Exchange		Hilltops	Central	Likely	Minor	Medium	4	43
44	Economic	Infrastructure	Wirrimah Telephone Exchange		Hilltops	Central	Likely	Minor	Medium	4	31
45	Economic	Infrastructure	Rye Park Telephone Exchange		Hilltops	East	Likely	Minor	Medium	4	31
46	Economic	Infrastructure	Reids Flat Telephone Exchange		Hilltops	East	Likely	Minor	Medium	4	31
47	Economic	Infrastructure	Phils Creek Telephone Exchange		Hilltops	East	Likely	Minor	Medium	4	31
48	Economic	Infrastructure	Kenyu Telephone Exchange		Hilltops	East	Likely	Minor	Medium	4	31
49	Economic	Infrastructure	Rugby Telephone Exchange		Hilltops	East	Likely	Minor	Medium	4	31
50	Economic	Infrastructure	Berremangra Telephone Exchange		Hilltops	South	Likely	Minor	Medium	4	31
51	Economic	Infrastructure	Brawlin Springs Telephone Exchange		Cootamundra-Gundagai	South	Likely	Minor	Medium	4	31
52	Economic	Infrastructure	Dudauman Telephone Exchange		Cootamundra-Gundagai	South	Likely	Minor	Medium	4	31
53	Economic	Infrastructure	Berthong Telephone Exchange		Cootamundra-Gundagai	West	Likely	Minor	Medium	4	31

54	Economic	Infrastructure	McMahons Reef Telephone Exchange		Hilltops	South	Likely	Minor	Medium	4	31
55	Economic	Infrastructure	Beggan Beggan Telephone Exchange		Hilltops	South	Likely	Minor	Medium	4	31
56	Human Settlement	Residential	Wombat		Hilltops	Central	Likely	Minor	Medium	4	21;22
57	Economic	Tourist and Recreational	Bendick Murrell National Park		Hilltops	Central	Likely	Minor	Medium	4	52;57
58	Economic	Tourist and Recreational	Koorawatha Nature Reserve		Hilltops	Central	Likely	Minor	Medium	4	57;61
59	Economic	Tourist and Recreational	Dananbilla Nature Reserve		Hilltops	Central	Likely	Minor	Medium	4	57;61
60	Economic	Infrastructure	YSC Boundary Road Tower		Hilltops	Central	Likely	Minor	Medium	4	55
61	Economic	Infrastructure	Telstra Boundary Road Tower		Hilltops	Central	Unlikely	Major	Medium	4	34
62	Economic	Infrastructure	Crowther Communications Tower		Hilltops	Central	Unlikely	Major	Medium	4	34
63	Economic	Infrastructure	Mt Darling Communication tower		Hilltops	East	Unlikely	Major	Medium	4	34
64	Economic	Infrastructure	Mt Canemumbola Communications Tower		Hilltops	East	Unlikely	Major	Medium	4	34
65	Economic	Tourist and Recreational	Illunie Nature Reserve		Hilltops	Central	Likely	Minor	Medium	4	57;61
66	Economic	Tourist and Recreational	Dananbilla nature Reserve		Hilltops	Central	Likely	Minor	Medium	4	57;61
67	Economic	Tourist and Recreational	Gungewalla nature Reserve		Hilltops	Central	Likely	Minor	Medium	4	57;61
68	Economic	Tourist and Recreational	Young Nature Reserve		Hilltops	Central	Likely	Minor	Medium	4	52;57
69	Economic	Tourist and Recreational	Flagstaff Memorial Nature Reserve		Cootamundra-Gundagai	South	Likely	Minor	Medium	4	57;61
70	Economic	Tourist and Recreational	Jindalee National Park		Cootamundra-Gundagai	South	Likely	Minor	Medium	4	52;57
71	Economic	Tourist and Recreational	Yeo Yeo Nature Reserve		Cootamundra-Gundagai	South	Likely	Minor	Medium	4	52;57
72	Economic	Tourist and Recreational	Ulandra Nature Reserve		Cootamundra-Gundagai	South	Likely	Minor	Medium	4	57;61
73	Economic	Infrastructure	Bethungra Mountain Tower		Cootamundra-Gundagai	South	Likely	Minor	Medium	4	31
74	Economic	Infrastructure	Bimbadeen Tower		Cootamundra-Gundagai	South	Likely	Minor	Medium	4	54
75	Economic	Infrastructure	Cootamundra Shire Radio Tower		Cootamundra-Gundagai	South	Likely	Minor	Medium	4	53
76	Economic	Infrastructure	Telstra Mobile Phone Tower		Cootamundra-Gundagai	South	Likely	Minor	Medium	4	31
77	Human Settlement	Residential	Bendick Murrell Village		Hilltops	Central	Likely	Minor	Medium	4	21;22
78	Human Settlement	Residential	Wallendbeen Village		Cootamundra-Gundagai	Central	Likely	Minor	Medium	4	21;22;36
79	Human Settlement	Residential	Galong Village		Hilltops	Central	Likely	Minor	Medium	4	21;22;36
80	Human Settlement	Residential	Frogmore Village		Hilltops	East	Likely	Minor	Medium	4	21;22
81	Economic	Infrastructure	Rye Park Fire Tower		Hilltops	East	Likely	Minor	Medium	4	56
82	Economic	Infrastructure	Mount Collins Telephone Exchange		Hilltops	East	Likely	Minor	Medium	4	31
83	Economic	Infrastructure	Garangula Telephone Exchange		Hilltops	South	Likely	Minor	Medium	4	31
84	Cultural	Other	Monastery		Hilltops	Central	Likely	Minor	Medium	4	30
85	Economic	Infrastructure	Police Radio Tower		Cootamundra-Gundagai	South	Likely	Minor	Medium	4	59
86	Economic	Infrastructure	Tubbul Telephone Exchange		Hilltops	West	Likely	Minor	Medium	4	31
87	Environment	Vulnerable	Yass Daisy		Cootamundra-Gundagai Hilltops	Central;East ;South	Likely	Minor	Medium	4	85
88	Environment	Vulnerable	Large-footed Myotis		Hilltops	Central	Likely	Minor	Medium	4	84
89	Environment	Vulnerable	Eastern Bentwing-bat		Cootamundra-Gundagai Hilltops	East	Likely	Minor	Medium	4	84
90	Environment	Vulnerable	Squirrel Glider		Cootamundra-Gundagai Hilltops	Central;South;West	Likely	Minor	Medium	4	83
91	Environment	Vulnerable	Diamond Firetail		Cootamundra-Gundagai Hilltops	Central;East ;South;West	Likely	Minor	Medium	4	83
92	Environment	Vulnerable	Grey - crowned Babbler		Cootamundra-Gundagai Hilltops	Central;East ;South;West	Likely	Minor	Medium	4	83

93	Environment	Vulnerable	Speckled Warbler		Hilltops	Central	Likely	Minor	Medium	4	83
94	Environment	Vulnerable	Brown Treecreeper		Cootamundra-Gundagai Hilltops	Central;East ;South;West	Likely	Minor	Medium	4	83
95	Environment	Vulnerable	Superb Parrot		Cootamundra-Gundagai Hilltops	Central;East ;South;West	Likely	Minor	Medium	4	82
96	Cultural	Aboriginal Significance	Aboriginal Site		Hilltops	East	Likely	Minor	Medium	4	20
97	Cultural	Aboriginal Significance	Aboriginal site		Hilltops	East	Likely	Minor	Medium	4	20
98	Cultural	Aboriginal Significance	Aboriginal site		Hilltops	Central;West	Likely	Minor	Medium	4	20
99	Cultural	Aboriginal Significance	Aboriginal site		Hilltops	Central	Likely	Minor	Medium	4	20
100	Cultural	Aboriginal Significance	Aboriginal site		Hilltops	Central;East ;South;West	Likely	Minor	Medium	4	20
101	Human Settlement	Residential	Gundagai		Cootamundra-Gundagai	Gundagai	Possible	Moderate	Medium	4	63;10;64;65
102	Human Settlement	Residential	Muttama Village		Cootamundra-Gundagai	Gundagai West	Possible	Moderate	Medium	4	10;65
103	Human Settlement	Residential	Coolac Village		Cootamundra-Gundagai	Gundagai West	Possible	Moderate	Medium	4	10;65
104	Human Settlement	Residential	Pettit Village		Cootamundra-Gundagai	Gundagai East	Possible	Moderate	Medium	4	10;65
105	Human Settlement	Residential	Nangus Village		Cootamundra-Gundagai	Gundagai West	Possible	Moderate	Medium	4	10;64;65
106	Human Settlement	Residential	Tumblong Village		Cootamundra-Gundagai	Gundagai East	Possible	Moderate	Medium	4	10;65
107	Human Settlement	Residential	Adjungbilly Village		Cootamundra-Gundagai	Gundagai East	Possible	Moderate	Medium	4	64;65
108	Human Settlement	Other	Anderson Park - NSP	Anderson Park, Cnr Lynch and Lovell St, Young	Hilltops	Central	Unlikely	Major	Medium	4	74
109	Human Settlement	Other	Alfred Park - NSP	Alfred Oval, Lachlan St, Young	Hilltops	Central	Unlikely	Major	Medium	4	73
110	Human Settlement	Other	Gus Smith Oval - NSP	Gus Smith Oval, Trafalgar St, Young	Hilltops	Central	Unlikely	Major	Medium	4	75
111	Human Settlement	Other	Anzac Park - NSP	Anzac Park, Weedallion St, Bribbaree	Hilltops	West	Unlikely	Major	Medium	4	76
112	Human Settlement	Other	Bradman Oval - NSP	Bradman Oval, Cnr Cutler and Northcote Ave, Cootamundra	Hilltops	South	Unlikely	Major	Medium	4	78
113	Human Settlement	Other	Barry Grace Oval - NSP	Barry Grace Oval, Hoskins St	Hilltops	Central	Unlikely	Major	Medium	4	77
114	Human Settlement	Other	Boorowa Recreation Park - NSP	Boorowa Recreation Park - Pudman St, Boorowa	Hilltops	East	Unlikely	Major	Medium	4	67
115	Human Settlement	Other	CWA Park - NSP	High Street, Galong	Hilltops	Central	Unlikely	Major	Medium	4	70
116	Human Settlement	Other	McLean Oval - NSP	McLean Oval, East ST, Harden	Hilltops	Central	Unlikely	Major	Medium	4	71
117	Human Settlement	Other	Murringo Hal - NSP	Murringo Hall, Cnr Murringo Gap Rd and Murringo Rd, Murringo	Hilltops	Central	Unlikely	Major	Medium	4	68
118	Human Settlement	Other	Jugiong Polo Field - NSP	Riverside Drive, Jugiong	Hilltops	South	Unlikely	Major	Medium	4	69
119	Human Settlement	Other	Gundagai Racecourse - NSP	Gundagai Racecourse, Oibell Drive,	Hilltops	Gundagai East	Unlikely	Major	Medium	4	80
120	Human Settlement	Other	Tumblong NSW RFS Shed - NSP	Tumblong RFS Station, Adelong Rd, Tumblong	Hilltops	Gundagai East	Likely	Minor	Medium	4	66
121	Human Settlement	Other	Coolac RFS Shed - NSP	Coolac RFS Station, Coolac Rd,	Hilltops	Gundagai West	Unlikely	Major	Medium	4	79
122	Human Settlement	Other	Koorawatha Tennis Courts - NSP	Koorawatha Tennis Courts -	Hilltops	Central	Unlikely	Major	Medium	4	72
123	Human Settlement	Residential	Cootamundra		Cootamundra-Gundagai	South	Likely	Minor	Medium	4	44;45;46;47
124	Economic	Infrastructure	Telstra Communication Tower Cowra RD		Hilltops	Central	Unlikely	Moderate	Low	NA	34
125	Economic	Infrastructure	East Australian pipeline Control Centre		Hilltops	Central	Unlikely	Moderate	Low	NA	86
126	Economic	Infrastructure	Weedallion Telstra Communications Tower		Hilltops	West	Unlikely	Moderate	Low	NA	34
127	Human Settlement	Other	Fisher Park - NSP	Fisher Park, Cnr Murray and Bourke St, Cootamundra	Hilltops	South	Unlikely	Moderate	Low	NA	88
128	Human Settlement	Other	Wagenbah Oval - NSP	Wagenbah Oval (Wombat Sports Club), Rose St, Wombat	Hilltops	Central	Unlikely	Moderate	Low	NA	87

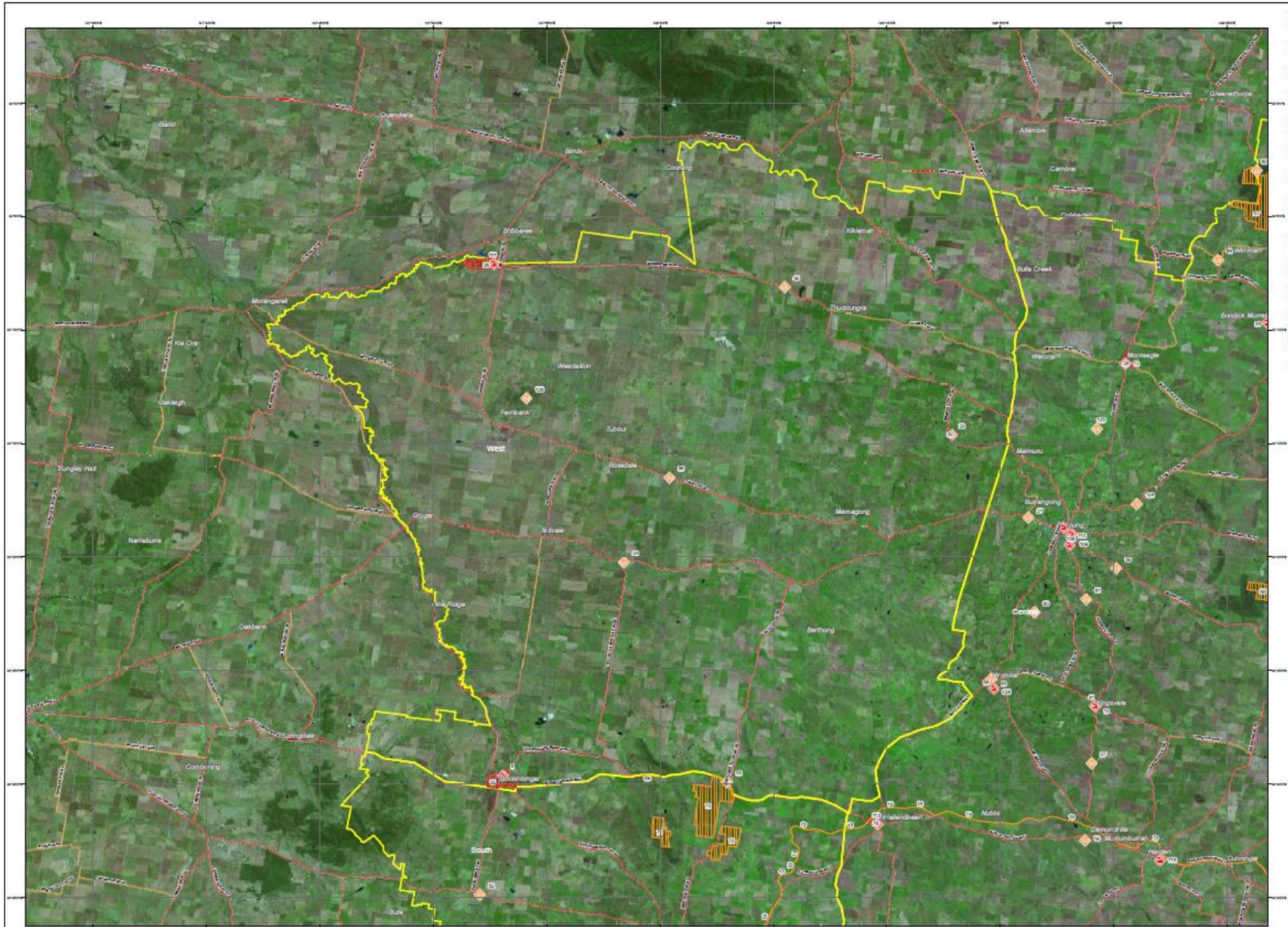
Appendix 3 Treatment Register

Priority (Risk Rating)	Asset ID	Asset Name	Asset Location	Class	Subclass	Strategy	Treatment ID	Action Description	Responsible Agency	Other RA	Support Agencies	Other SA	1920	2021	2223	2324	2425	2526	2627	
1A (Extreme)	1	Plantations Pine	All BFMC AREA	Economic	Commercial Forests	Community Education	10	Publish media releases at start of fire season	RFS,FCNSW					[2021]	[2223]	[2324]	[2425]	[2526]	[2627]	
						Hazard Reduction	16	Implement grazing program	FCNSW		Private			[2021]	[2223]	[2324]	[2425]	[2526]	[2627]	
							18	Inspect SFAZ and maintain when required	FCNSW		Private			[2021]	[2223]	[2324]	[2425]	[2526]	[2627]	
						Ignition Management	12	Implement duty roster for manning of fire tower	FCNSW					[2021]	[2223]	[2324]	[2425]	[2526]	[2627]	
							13	Implement solid fuel fire ban as required	FCNSW					[2021]	[2223]	[2324]	[2425]	[2526]	[2627]	
							14	Restrict Forest Ops - Forest Harvest Code	FCNSW					[2021]	[2223]	[2324]	[2425]	[2526]	[2627]	
						Preparedness	19	Perform Patrols of Campsites during TOBAN days	FCNSW		RFS			[2021]	[2223]	[2324]	[2425]	[2526]	[2627]	
							11	Undertake routine maintenance of fire trails	FCNSW		Private			[2021]	[2223]	[2324]	[2425]	[2526]	[2627]	
						15	Fire Suppression Equip on Standby as required	FCNSW		RFS			[2021]	[2223]	[2324]	[2425]	[2526]	[2627]		
						Property Planning	17	Develop fuel management plan	FCNSW		Private			[2021]	[2223]	[2324]	[2425]	[2526]	[2627]	
1B (Extreme)	2	Aboriginal site		Cultural Heritage	Aboriginal Significance	Property Planning	20	Implement site protection measures	NPWS,RFS				[1920]	[2021]	[2223]	[2324]	[2425]	[2526]	[2627]	
2A (Very High)	0	Aboriginal site Aboriginal Sites		Cultural Heritage Cultural Heritage	Aboriginal Significance Aboriginal Significance															
	3	Rugby School		Human Settlement	Special Fire Protection	Hazard Reduction	22	Slashing SFAZs around village	LGA				[1920]	[2021]	[2223]	[2324]	[2425]	[2526]	[2627]	
						Preparedness	21	Inspect village for section 63 notices	RFS		LGA		[1920]	[2021]	[2223]	[2324]	[2425]	[2526]	[2627]	
	4	Reids Flat Village		Human Settlement	Residential	Hazard Reduction	22	Slashing SFAZs around village	LGA				[1920]	[2021]	[2223]	[2324]	[2425]	[2526]	[2627]	
						Preparedness	21	Inspect village for section 63 notices	RFS		LGA		[1920]	[2021]	[2223]	[2324]	[2425]	[2526]	[2627]	
	5	Aboriginal Sites		Cultural Heritage	Aboriginal Significance	Property Planning	20	Implement site protection measures	NPWS,RFS				[1920]	[2021]	[2223]	[2324]	[2425]	[2526]	[2627]	
	6	Aboriginal site		Cultural Heritage	Aboriginal Significance	Property Planning	20	Implement site protection measures	NPWS,RFS				[1920]	[2021]	[2223]	[2324]	[2425]	[2526]	[2627]	
							22	Slashing SFAZs around village	LGA				[1920]	[2021]	[2223]	[2324]	[2425]	[2526]	[2627]	
	7	Rugby Village		Human Settlement	Residential	Preparedness	21	Inspect village for section 63 notices	RFS		LGA		[1920]	[2021]	[2223]	[2324]	[2425]	[2526]	[2627]	
	8	Stockinbingal Recreation Ground - NSP	Stockinbingal Recreation Ground, Cnr O'Brien and Duduaman St, Stockinbingal	Human Settlement	Other	Hazard Reduction	27	Maintain fuels in accordance with Guidelines	LGA					[2021]	[2223]	[2324]	[2425]	[2526]	[2627]	
	9	Muttama RFS Shed - NSP	Muttama RFS Station, Bridge St, Muttama	Human Settlement	Other	Hazard Reduction	26	Maintain fuels in accordance with	LGA					[2021]	[2223]	[2324]	[2425]	[2526]	[2627]	
	10	Kingsvale RFS Station - NSP	Kingsvale RFS Station, Kingsvale Rd, Kingsvale	Human Settlement	Other	Hazard Reduction	23	Maintain fuels in accordance with	LGA		RFS			[2021]	[2223]	[2324]	[2425]	[2526]	[2627]	
	11	Nangus RFS Station - NSP	Nangus RFS Station, Nangus - June , NangusRd	Human Settlement	Other	Hazard Reduction	25	Maintain fuels in accordance with	LGA					[2021]	[2223]	[2324]	[2425]	[2526]	[2627]	
	12	Monteagle RFS Station - NSP	Monteagle RFS Station	Human Settlement	Other	Hazard Reduction	24	Maintain fuels in accordance with	LGA					[2021]	[2223]	[2324]	[2425]	[2526]	[2627]	
	2C (Very High)	13	ARTC Main Southern Rail Line	CGRC and Hilltops LGA	Economic	Infrastructure	Hazard Reduction	28	Low intensity burning, Spraying, Grading	ARTC		RFS			[2021]	[2223]	[2324]	[2425]	[2526]	[2627]
	3A (High)	0	Cootamundra to Parkes Rail line	Cootamundra - Stockinbingal - Milvale - Bribbaree	Economic	Infrastructure	Hazard Reduction	40	Spraying, grading and burning	ARTC		RFS			[2021]	[2223]	[2324]	[2425]	[2526]	[2627]
14		Old Wheeo Road		Human Settlement	Residential	Property Planning	29	Develop and implement Property Protection Plans	RFS							[2324]		[2526]		
15		Optus Hut - Kilrush Rd, Cootamundra		Economic	Infrastructure	Hazard Reduction	32	Maintain fuel levels	Other	Optus				[2021]	[2223]	[2324]	[2425]	[2526]	[2627]	
16		Pudman Creek Telephone Exchange		Economic	Infrastructure	Hazard Reduction	31	Maintain fuel levels	Other	Telstra				[2021]	[2223]	[2324]	[2425]	[2526]	[2627]	
17		Aboriginal site		Cultural Heritage	Aboriginal Significance	Property Planning	20	Implement site protection measures	NPWS,RFS				[1920]	[2021]	[2223]	[2324]	[2425]	[2526]	[2627]	
18		Coppabella Hill Communications Tower		Economic	Infrastructure	Hazard Reduction	34	Maintain fuel levels	Other	Telstra				[2021]	[2223]	[2324]	[2425]	[2526]	[2627]	
19		Harden Electricity Substation		Economic	Infrastructure	Hazard Reduction	35	Maintain fuel levels	Other	Country Energy				[2021]	[2223]	[2324]	[2425]	[2526]	[2627]	
20		Cootamundra Electrical Substation		Economic	Infrastructure	Hazard Reduction	35	Maintain fuel levels	Other	Country Energy				[2021]	[2223]	[2324]	[2425]	[2526]	[2627]	
21		Young Electrical Substation		Economic	Infrastructure	Hazard Reduction	35	Maintain fuel levels	Other	Country Energy				[2021]	[2223]	[2324]	[2425]	[2526]	[2627]	
22		Boorowa Electricity Substation		Economic	Infrastructure	Hazard Reduction	35	Maintain fuel levels	Other	Country Energy				[2021]	[2223]	[2324]	[2425]	[2526]	[2627]	
23		Maimuru School		Human Settlement	Special Fire Protection	Community Education	33	Conduct school visit	RFS					[2021]	[2223]		[2526]			
						Hazard Reduction	30	Maintenance of APZ on private land	Other	Land owner / occupier	RFS			[2021]	[2223]	[2324]	[2425]	[2526]	[2627]	
						Hazard Reduction	31	Maintain fuel levels	Other	Telstra				[2021]	[2223]	[2324]	[2425]	[2526]	[2627]	
						Property Planning	20	Implement site protection measures	NPWS,RFS				[1920]	[2021]	[2223]	[2324]	[2425]	[2526]	[2627]	
24		Hampstead Telephone Exchange		Economic	Infrastructure	Hazard Reduction	22	Slashing SFAZs around village	LGA				[1920]	[2021]	[2223]	[2324]	[2425]	[2526]	[2627]	
						36	Maintain railway as SFAZ	ARTC					[1920]	[2021]	[2223]	[2324]	[2425]	[2526]	[2627]	
						Preparedness	21	Inspect village for section 63 notices	RFS		LGA		[1920]	[2021]	[2223]	[2324]	[2425]	[2526]	[2627]	
27		Rocky Hill Communications Tower		Economic	Infrastructure	Hazard Reduction	34	Maintain fuel levels	Other	Telstra				[2021]	[2223]	[2324]	[2425]	[2526]	[2627]	
28		Monteagle Village		Human Settlement	Residential	Hazard Reduction	22	Slashing SFAZs around village	LGA				[1920]	[2021]	[2223]	[2324]	[2425]	[2526]	[2627]	
						Preparedness	21	Inspect village for section 63 notices	RFS		LGA		[1920]	[2021]	[2223]	[2324]	[2425]	[2526]	[2627]	
						Hazard Reduction	22	Slashing SFAZs around village	LGA				[1920]	[2021]	[2223]	[2324]	[2425]	[2526]	[2627]	
						36	Maintain railway as SFAZ	ARTC					[1920]	[2021]	[2223]	[2324]	[2425]	[2526]	[2627]	
29		Koorawatha Village		Human Settlement	Residential	Preparedness	21	Inspect village for section 63 notices	RFS		LGA		[1920]	[2021]	[2223]	[2324]	[2425]	[2526]	[2627]	
						37	Fuel reduction as per fire management plans	Other	NSWSF	RFS			[2021]	[2223]	[2324]	[2425]	[2526]	[2627]		
30		Rye Park Village		Human Settlement	Residential	Hazard Reduction	22	Slashing SFAZs around village	LGA				[1920]	[2021]	[2223]	[2324]	[2425]	[2526]	[2627]	
						Preparedness	21	Inspect village for section 63 notices	RFS		LGA		[1920]	[2021]	[2223]	[2324]	[2425]	[2526]	[2627]	
31		Stockinbingal Village		Human Settlement	Residential	Hazard Reduction	22	Slashing SFAZs around village	LGA				[1920]	[2021]	[2223]	[2324]	[2425]	[2526]	[2627]	
						36	Maintain railway as SFAZ	ARTC					[1920]	[2021]	[2223]	[2324]	[2425]	[2526]	[2627]	
						Preparedness	21	Inspect village for section 63 notices	RFS		LGA		[1920]	[2021]	[2223]	[2324]	[2425]	[2526]	[2627]	
32	Maimuru Settlement	Maimuru	Human Settlement	Residential	Hazard Reduction	22	Slashing SFAZs around village	LGA				[1920]	[2021]	[2223]	[2324]	[2425]	[2526]	[2627]		
					Preparedness	21	Inspect village for section 63 notices	RFS		LGA		[1920]	[2021]	[2223]	[2324]	[2425]	[2526]	[2627]		
33	Rosemont Radio Tower	Rosemont	Economic	Infrastructure	Hazard Reduction	38	Maintain APZ's	FRNSW,RFS					[2021]	[2223]	[2324]	[2425]	[2526]	[2627]		
34	Bendick Murrell Recreation Hall - NSP	Bendick Murrell Hall, Bendick Murrell Rd, Bendick Murrell	Human Settlement	Other	Hazard Reduction	39	Maintain fuels in accordance with Guidelines	LGA					[2021]	[2223]	[2324]	[2425]	[2526]	[2627]		
35	Murringo Village		Human Settlement	Residential	Hazard Reduction	22	Slashing SFAZs around village	LGA					[1920]	[2021]	[2223]	[2324]	[2425]	[2526]	[2627]	
					Preparedness	21	Inspect village for section 63 notices	RFS		LGA		[1920]	[2021]	[2223]	[2324]	[2425]	[2526]	[2627]		
3C (High)	36	Reids Flat Showground NSP	Reids Flat Showground	Human Settlement	Other	Hazard Reduction	41	Maintain as per guidelines	LGA;Private				[2021]	[2223]	[2324]	[2425]	[2526]	[2627]		
						Community Education	42	Conduct awareness program	RFS				[2021]	[2223]		[2526]				
				Economic	Agricultural	Community Education	49	Farm Fire Wise Action Plan	RFS				[2021]	[2223]	[2324]	[2425]	[2526]	[2627]		
							50	Media Release	RFS				[2021]	[2223]	[2324]	[2425]	[2526]	[2627]		

	90	Squirrel Glider		Environmental	Vulnerable	Other	83	Implement Environmental Protection	NPWS			FRNSW,RailCorp,RMS,RFS,DPI,FCNSW,ARTC			[2021]	[2223]	[2324]	[2425]	[2526]	
	91	Diamond Firetail		Environmental	Vulnerable	Other	83	Implement Environmental Protection	NPWS			FRNSW,RailCorp,RMS,RFS,DPI,FCNSW,ARTC			[2021]	[2223]	[2324]	[2425]	[2526]	
	92	Grey - crowned Babbler		Environmental	Vulnerable	Other	83	Implement Environmental Protection	NPWS			FRNSW,RailCorp,RMS,RFS,DPI,FCNSW,ARTC			[2021]	[2223]	[2324]	[2425]	[2526]	
	93	Speckled Warbler		Environmental	Vulnerable	Other	83	Implement Environmental Protection	NPWS			FRNSW,RailCorp,RMS,RFS,DPI,FCNSW,ARTC			[2021]	[2223]	[2324]	[2425]	[2526]	
	94	Brown Treecreeper		Environmental	Vulnerable	Other	83	Implement Environmental Protection	NPWS			FRNSW,RailCorp,RMS,RFS,DPI,FCNSW,ARTC			[2021]	[2223]	[2324]	[2425]	[2526]	
	95	Superb Parrot		Environmental	Vulnerable	Other	82	Environmental protection measures	NPWS			FRNSW,RailCorp,RMS,RFS,DPI,FCNSW,ARTC			[2021]	[2223]	[2324]	[2425]	[2526]	
	96	Aboriginal site		Cultural Heritage	Aboriginal Significance	Property Planning	20	Implement site protection measures	NPWS,RFS					[1920]	[2021]	[2223]	[2324]	[2425]	[2526]	[2627]
	97	Aboriginal site		Cultural Heritage	Aboriginal Significance	Property Planning	20	Implement site protection measures	NPWS,RFS					[1920]	[2021]	[2223]	[2324]	[2425]	[2526]	[2627]
	98	Aboriginal site		Cultural Heritage	Aboriginal Significance	Property Planning	20	Implement site protection measures	NPWS,RFS					[1920]	[2021]	[2223]	[2324]	[2425]	[2526]	[2627]
	99	Aboriginal site		Cultural Heritage	Aboriginal Significance	Property Planning	20	Implement site protection measures	NPWS,RFS					[1920]	[2021]	[2223]	[2324]	[2425]	[2526]	[2627]
	100	Aboriginal site		Cultural Heritage	Aboriginal Significance	Property Planning	20	Implement site protection measures	NPWS,RFS					[1920]	[2021]	[2223]	[2324]	[2425]	[2526]	[2627]
	101	Gundagai		Human Settlement	Residential	Community Education	10	Publish media releases at start of fire season	RFS,FCNSW					[2021]	[2223]	[2324]	[2425]	[2526]	[2627]	
63							Media Campaign during bushfire danger period	RFS			NPWS,FRNSW,FCNSW		[1920]	[2021]	[2223]	[2324]	[2425]	[2526]	[2627]	
64							Conduct FireWise presentation at school	RFS										[2425]		[2627]
Hazard Reduction						65	Undertake HR works along road verge and around village	CL,LGA,RMS			[1920]	[2021]	[2223]	[2324]	[2425]	[2526]	[2627]			
	102	Muttama Village		Human Settlement	Residential	Community Education	10	Publish media releases at start of fire season	RFS,FCNSW					[2021]	[2223]	[2324]	[2425]	[2526]	[2627]	
						Hazard Reduction	65	Undertake HR works along road verge and around village	CL,LGA,RMS				[1920]	[2021]	[2223]	[2324]	[2425]	[2526]	[2627]	
	103	Coolac Village		Human Settlement	Residential	Community Education	10	Publish media releases at start of fire season	RFS,FCNSW					[2021]	[2223]	[2324]	[2425]	[2526]	[2627]	
Hazard Reduction						65	Undertake HR works along road verge and around village	CL,LGA,RMS			[1920]	[2021]	[2223]	[2324]	[2425]	[2526]	[2627]			
	104	Pettit Village		Human Settlement	Residential	Community Education	10	Publish media releases at start of fire season	RFS,FCNSW					[2021]	[2223]	[2324]	[2425]	[2526]	[2627]	
Hazard Reduction						65	Undertake HR works along road verge and around village	CL,LGA,RMS			[1920]	[2021]	[2223]	[2324]	[2425]	[2526]	[2627]			
	105	Nangus Village		Human Settlement	Residential	Community Education	10	Publish media releases at start of fire season	RFS,FCNSW					[2021]	[2223]	[2324]	[2425]	[2526]	[2627]	
						64	Conduct FireWise presentation at school	RFS										[2425]		[2627]
Hazard Reduction						65	Undertake HR works along road verge and around village	CL,LGA,RMS			[1920]	[2021]	[2223]	[2324]	[2425]	[2526]	[2627]			
	106	Tumblong Village		Human Settlement	Residential	Community Education	10	Publish media releases at start of fire season	RFS,FCNSW					[2021]	[2223]	[2324]	[2425]	[2526]	[2627]	
Hazard Reduction						65	Undertake HR works along road verge and around village	CL,LGA,RMS			[1920]	[2021]	[2223]	[2324]	[2425]	[2526]	[2627]			
	107	Adjungbilly Village		Human Settlement	Residential	Community Education	64	Conduct FireWise presentation at school	RFS									[2425]		[2627]
Hazard Reduction						65	Undertake HR works along road verge and around village	CL,LGA,RMS			[1920]	[2021]	[2223]	[2324]	[2425]	[2526]	[2627]			
	108	Anderson Park - NSP	Anderson Park, Cnr Lynch and Lovell St, Young	Human Settlement	Other	Hazard Reduction	74	Maintain fuels in accordance with Guidelines	LGA					[2021]	[2223]	[2324]	[2425]	[2526]	[2627]	
	109	Alfred Park - NSP	Alfred Oval, Lachlan St, Young	Human Settlement	Other	Hazard Reduction	73	Maintain fuels in accordance with Guidelines	LGA					[2021]	[2223]	[2324]	[2425]	[2526]	[2627]	
	110	Gus Smith Oval - NSP	Gus Smith Oval, Trafalgar St, Young	Human Settlement	Other	Hazard Reduction	75	Maintain fuels in accordance with Guidelines	LGA					[2021]	[2223]	[2324]	[2425]			
	111	Anzac Park - NSP	Anzac Park, Weedallion St, Bribbaree	Human Settlement	Other	Hazard Reduction	76	Maintain fuels in accordance with Guidelines	LGA					[2021]	[2223]	[2324]	[2425]	[2526]	[2627]	
	112	Bradman Oval - NSP	Bradman Oval, Cnr Cutler and Northcote Ave, Cootamundra	Human Settlement	Other	Hazard Reduction	78	Maintain fuels in accordance with Guidelines	LGA					[2021]	[2223]	[2324]	[2425]	[2526]	[2627]	
	113	Barry Grace Oval - NSP	Barry Grace Oval, Hoskins St Wallendbeen	Human Settlement	Other	Hazard Reduction	77	Maintain fuels in accordance with Guidelines	LGA					[2021]	[2223]	[2324]	[2425]	[2526]	[2627]	
	114	Boorowa Recreation Park - NSP	Boorowa Recreation Park - Pudman St, Boorowa	Human Settlement	Other	Hazard Reduction	67	Maintain fuels in accordance with Guidelines	LGA					[2021]	[2223]	[2324]	[2425]	[2526]	[2627]	
	115	CWA Park - NSP	High Street, Galong	Human Settlement	Other	Hazard Reduction	70	Maintain fuels in accordance with Guidelines	LGA					[2021]	[2223]	[2324]	[2425]	[2526]	[2627]	
	116	McLean Oval - NSP	McLean Oval, East ST, Harden	Human Settlement	Other	Hazard Reduction	71	Maintain fuels in accordance with Guidelines	LGA					[2021]	[2223]	[2324]	[2425]	[2526]	[2627]	
	117	Murringo Hal - NSP	Murringo Hall, Cnr Murringo Gap Rd and Murringo Rd, Murringo	Human Settlement	Other	Hazard Reduction	68	Maintain fuels in accordance with Guidelines	LGA					[2021]	[2223]	[2324]	[2425]	[2526]	[2627]	
	118	Jugiong Polo Field - NSP	Riverside Drive, Jugiong	Human Settlement	Other	Hazard Reduction	69	Maintain fuels in accordance with Guidelines	LGA					[2021]	[2223]	[2324]	[2425]	[2526]	[2627]	
	119	Gundagai Racecourse - NSP	Gundagai Racecourse, Oibell Drive, Gundagai	Human Settlement	Other	Hazard Reduction	80	Maintain fuels in accordance with Guidelines	LGA					[2021]	[2223]	[2324]	[2425]	[2526]	[2627]	
	120	Tumblong NSW RFS Shed - NSP	Tumblong RFS Station, Adelong Rd, Tumblong	Human Settlement	Other	Hazard Reduction	66	Maintain fuels in accordance with Guidelines	LGA					[2021]	[2223]	[2324]	[2425]	[2526]	[2627]	
	121	Coolac RFS Shed - NSP	Coolac RFS Station, Coolac Rd, Coolac	Human Settlement	Other	Hazard Reduction	79	Maintain fuels in accordance with Guidelines	LGA					[2021]	[2223]	[2324]	[2425]	[2526]	[2627]	
	122	Koorawatha Tennis Courts - NSP	Koorawatha Tennis Courts - Campbell St	Human Settlement	Other	Hazard Reduction	72	Maintain fuels in accordance with Guidelines	LGA					[2021]	[2223]	[2324]	[2425]	[2526]	[2627]	
	123	Cootamundra		Human Settlement	Residential	Hazard Reduction	44	Maintain APZs	RFS		Other	Council	[1920]	[2021]	[2223]	[2324]	[2425]	[2526]	[2627]	
46							Maintain mosaic burning program for SFAZs	RFS										[2526]		
Preparedness						45	Maintain APZs	RFS		LGA		[1920]	[2021]	[2223]	[2324]	[2425]	[2526]	[2627]		
						47	Inspect town perimeter for section 63 notices	RFS		LGA		[1920]	[2021]	[2223]	[2324]	[2425]	[2526]	[2627]		
NA (Low)	124	Telstra Communication Tower Cowra RD		Economic	Infrastructure	Hazard Reduction	34	Maintain fuel levels	Other		Telstra				[2021]	[2223]	[2324]	[2425]	[2526]	[2627]
	125	East Australian pipeline Control Centre		Economic	Infrastructure	Hazard Reduction	86	Maintain fuel levels	Other		APA Group				[2021]	[2223]	[2324]	[2425]	[2526]	[2627]
	126	Weedallion Telstra Communications Tower		Economic	Infrastructure	Hazard Reduction	34	Maintain fuel levels	Other		Telstra				[2021]	[2223]	[2324]	[2425]	[2526]	[2627]
	127	Fisher Park - NSP	Fisher Park, Cnr Murray and Bourke St, Cootamundra	Human Settlement	Other	Hazard Reduction	88	Maintain fuels in accordance with Guidelines	LGA					[2021]	[2223]	[2324]	[2425]	[2526]	[2627]	
	128	Wagenbah Oval - NSP	Wagenbah Oval (Wombat Sports Club), Rose St, Wombat	Human Settlement	Other	Hazard Reduction	87	Maintain fuels in accordance with Guidelines	LGA					[2021]	[2223]	[2324]	[2425]	[2526]	[2627]	

Appendix Maps

Map 1 West



Map Ref	Asset Name	Asset Type	Subtype	Risk Level	Priority	Treatment
8	Aboriginal Site	Cultural	Aboriginal	Very High	2A	T20
9	Stockbridge Recreation Ground - NSP	Human	Other	Very High	2A	T27
17	Aboriginal Site	Cultural	Aboriginal	High	2A	T20
23	Mamuru School	Human	Special Fire	High	2A	T20/33
24	Hampden Telephone Exchange	Economic	Infrastructure	High	2A	T31
26	Stittsville Village	Human	Residential	High	2A	T21/22/38
31	Stockbridge Village	Human	Residential	High	2A	T21/22/38
32	Mamuru Settlement	Human	Residential	High	2A	T21/22
NA	Traveling Stock Routes	Economic	Agricultural	Medium	4	T63
NA	Country Energy Power Lines	Economic	Infrastructure	Medium	4	T55/51
NA	Gas pipeline	Economic	Infrastructure	Medium	4	T60
NA	Agricultural land cropping	Economic	Agricultural	Medium	4	T46/51/51
NA	Agricultural land grazing	Economic	Agricultural	Medium	4	T46/51/51
40	Thudlung Telephone Exchange	Economic	Infrastructure	Medium	4	T31
53	Bethung Telephone Exchange	Economic	Infrastructure	Medium	4	T31
68	Tubul Telephone Exchange	Economic	Infrastructure	Medium	4	T31
80	Square Grid	Environment	Vulnerable	Medium	4	T63
91	Diamond Field	Environment	Vulnerable	Medium	4	T63
92	Grey-covered Saddle	Environment	Vulnerable	Medium	4	T63
94	Steen Trenches	Environment	Vulnerable	Medium	4	T63
95	Superb Pines	Environment	Vulnerable	Medium	4	T63
96	Aboriginal site	Cultural	Aboriginal	Medium	4	T20
100	Aboriginal site	Cultural	Aboriginal	Medium	4	T20
101	Arctic Park - NSP	Human	Other	Medium	4	T76
126	Wendell Telephone Communications	Economic	Infrastructure	Low	NA	T34

South West Slopes BFMC Bush Fire Risk Management Plan 2020

West
- Map Display Area
Map 1 of 6

This South West Slopes Bush Fire Management Plan (SWMFP) has been prepared by the South West Slopes Bush Fire Management Committee (SWMFC) pursuant to section 52 of the Rural Fires Act 1997.

The aim of this SWMFP is to reduce the adverse impact of bush fire on life, property and the environment.

The objectives of this SWMFP are to:

- reduce the number of bush fires that cause damage to life, property or the environment;
- reduce the number of bush fires that cause damage to life, property or the environment;
- reduce the number of bush fires that cause damage to life, property or the environment;

This map forms part of the SWMFP for the South West Slopes BFMC, covering the local government areas of Hilltops and Cootamundra-Gundagai. It should be viewed in conjunction with the accompanying SWMFP document which provides further details on the BFMC area, the assets assessed and the risk assessment process used.

Review

Under the Rural Fires Act 1997 this plan must be reviewed and updated within each assessment year period following the completion of the BFMC. The South West Slopes BFMC will also review the plan as necessary. This may be triggered by a range of circumstances, including but not limited to:

- changes to the BFMC area, organisational responsibilities or legislation;
- changes to the bush fire risk in the area or;
- following a major fire event.

Assets

The SWMFP identifies the assets that are considered by the South West Slopes BFMC and community to be at risk from bush fire, assesses the bush fire risk to each asset and designs treatment measures to mitigate the risk. Assets in the BFMC area identified as requiring treatment are listed in the assets table. Other assets within the BFMC area that were assessed as not requiring treatment within the life of this plan are listed in the appendix to the SWMFP document. The map Ref number 'NA' denotes non-reportable assets.

Treatments

Specific treatments assigned to assets in the South West Slopes area are listed in the treatment table and linked to the assets which they are designed to protect. Standard BFMC area treatments (as not linked to a specific asset) which occur on an ongoing basis within the BFMC area are:

- maintaining the bush fire zone and map;
- ensuring developments in the bush fire zone and map comply with Planning for Bush Fire Protection;
- using the Local Environment Plan (LEP) to control development in areas with a bush fire risk;
- varying the standard bush fire danger period as required;
- issuing permits during bush fire danger periods;
- provision of education/information;
- investigation of bush fire causes;
- normal fire suppression activities;
- assessing and managing compliance with strategic fire-fighting resource allocation management systems;
- preparation of a GSD Operations Coordination Plan.

Note on LAC: All areas not specifically mapped as an ATC, SFAC or FZC are considered as LAC in this risk management plan. The areas identified by an LAC polygon on the map, please refer to the SWMFP document for the specific land management objectives.

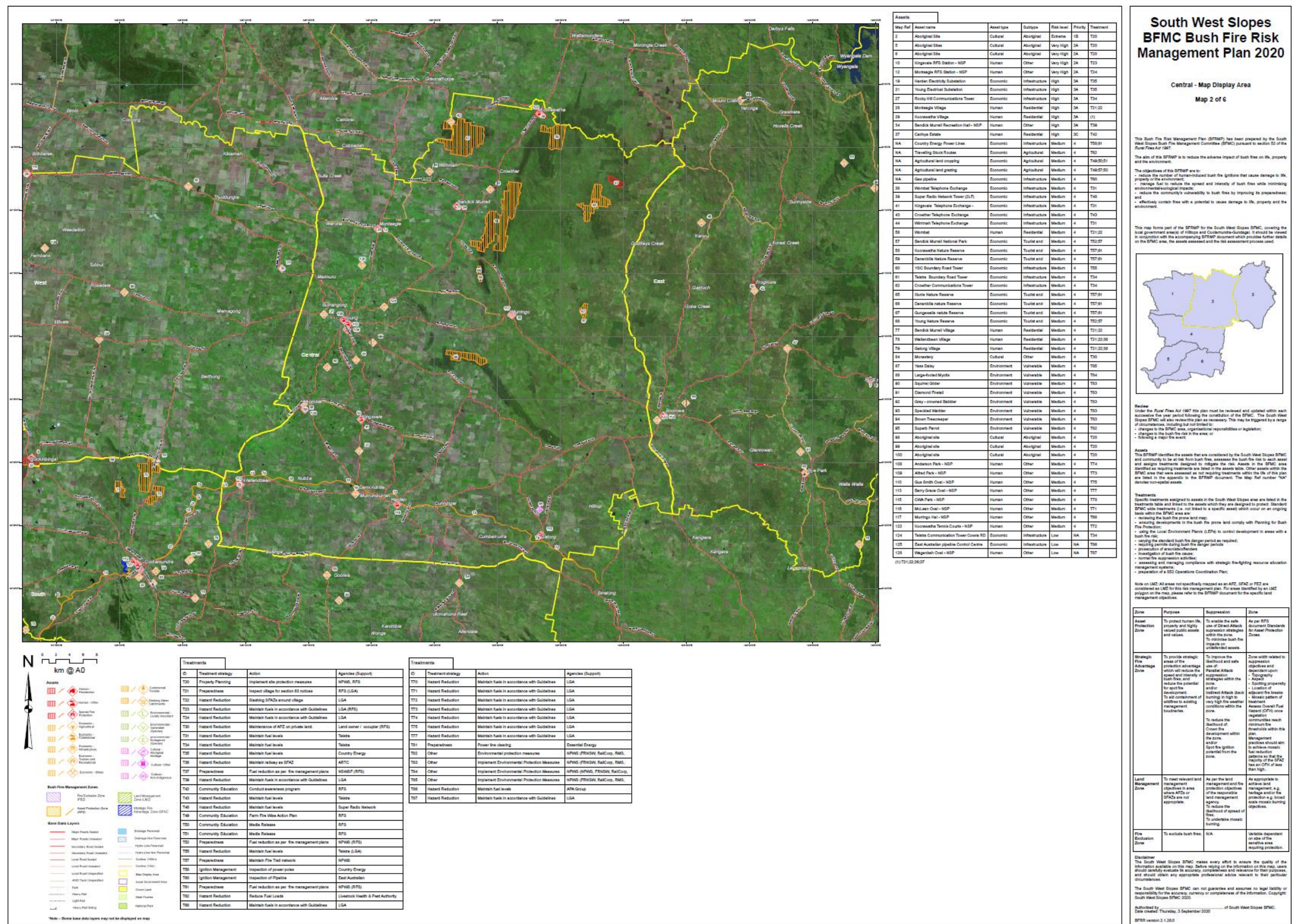
Zone	Purpose	Suppression	Zone
Asset Protection Zone	To protect human life, property and highly valued public assets and values.	To enable the safe use of Direct Attack suppression strategies within the zone.	As per RFS Asset Protection Zones.
Strategic Fire Advantage Zone	To provide strategic areas of fire protection advantage which will reduce the spread and intensity of bush fire and reduce the potential for asset loss.	To improve the bushland and safe use of Parallel Attack suppression strategies within the zone.	Zone width related to suppression objectives and dependent on: - Topography - Aspect - Spacing of property - Location of adjacent the bushland - Location of the bushland - Location of the bushland - Location of the bushland
Land Management Zone	To meet relevant land management objectives in areas where ATCs or SFACs are not appropriate.	To reduce the bushland and safe use of Parallel Attack suppression strategies within the zone.	As appropriate to the land management objectives and the location of the bushland and/or the bushland and/or the bushland
Fire Exclusion Zone	To exclude bush fire.	N/A	Variable dependent on the location of the bushland and/or the bushland

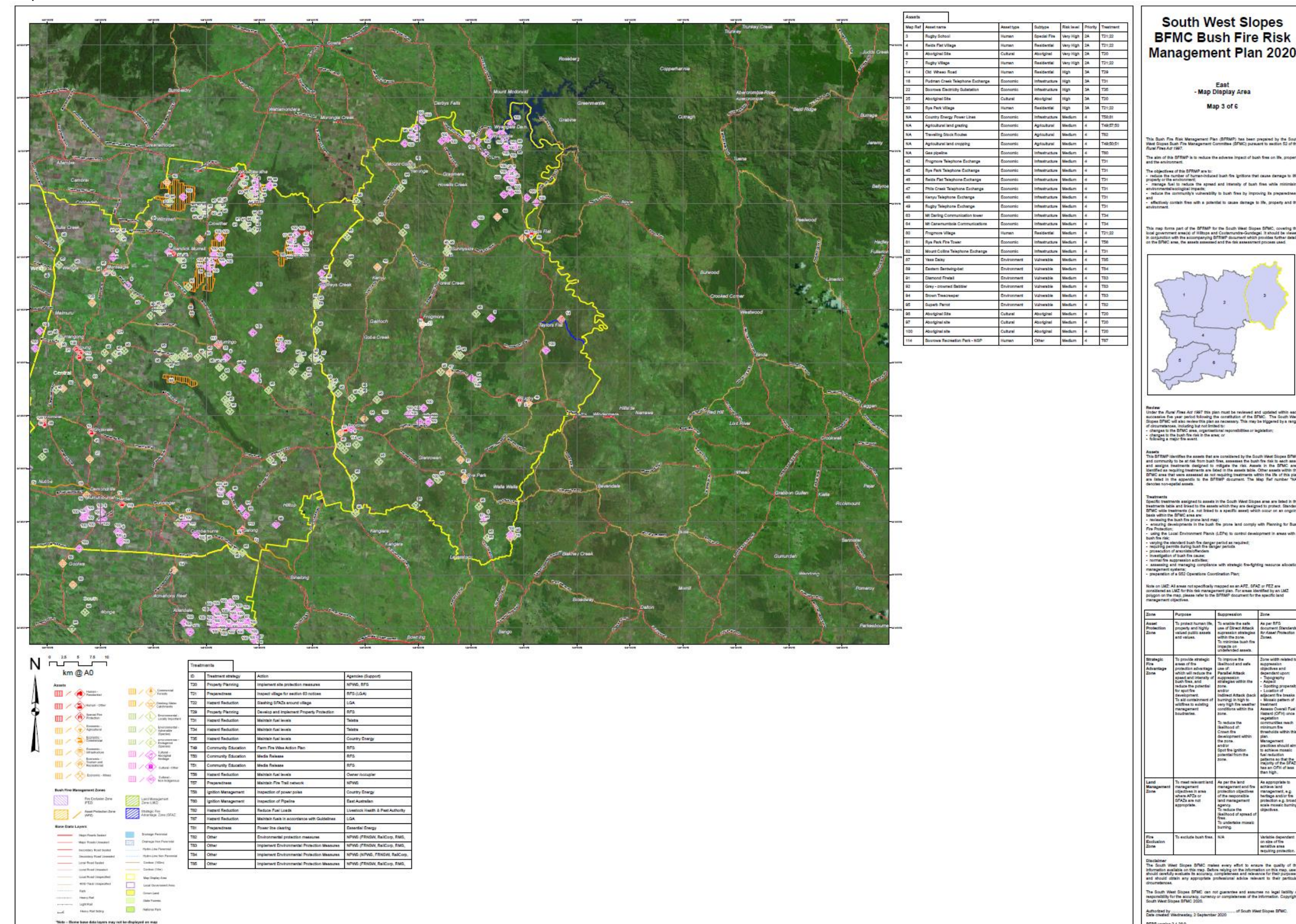
Disclaimer

The South West Slopes BFMC makes every effort to ensure the quality of the information available on this map. Before relying on the information on this map, users should carefully evaluate its accuracy, completeness and relevance for their purposes, and should obtain any appropriate professional advice relevant to their particular circumstances.

The South West Slopes BFMC does not guarantee and assumes no legal liability or responsibility for the accuracy, currency or completeness of the information. Copyright: South West Slopes BFMC 2020.

Authorised by: [Signature] of South West Slopes BFMC.
Date created: Wednesday 3 September 2020
BFMC version 2.1.2020





Map 4 South

