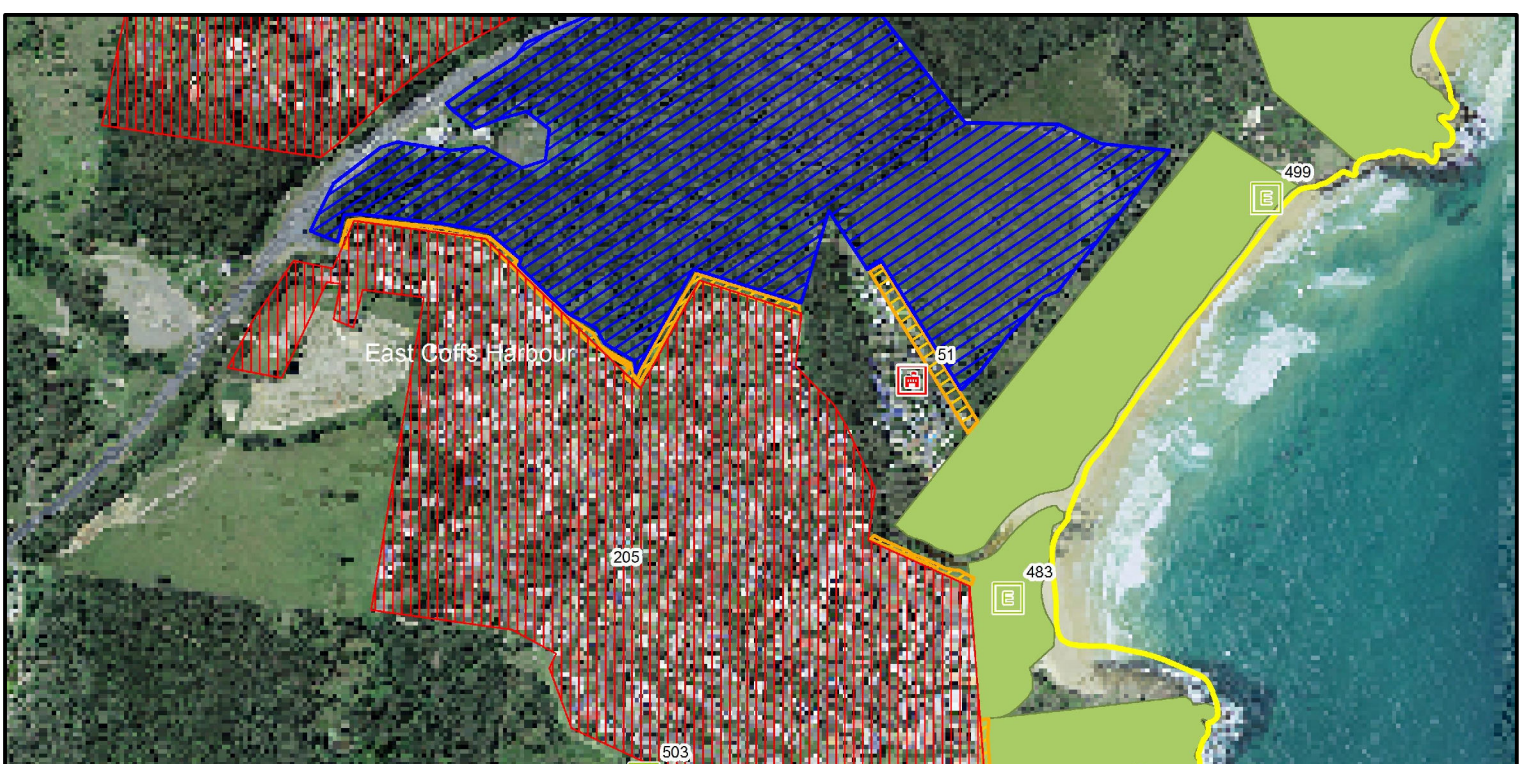
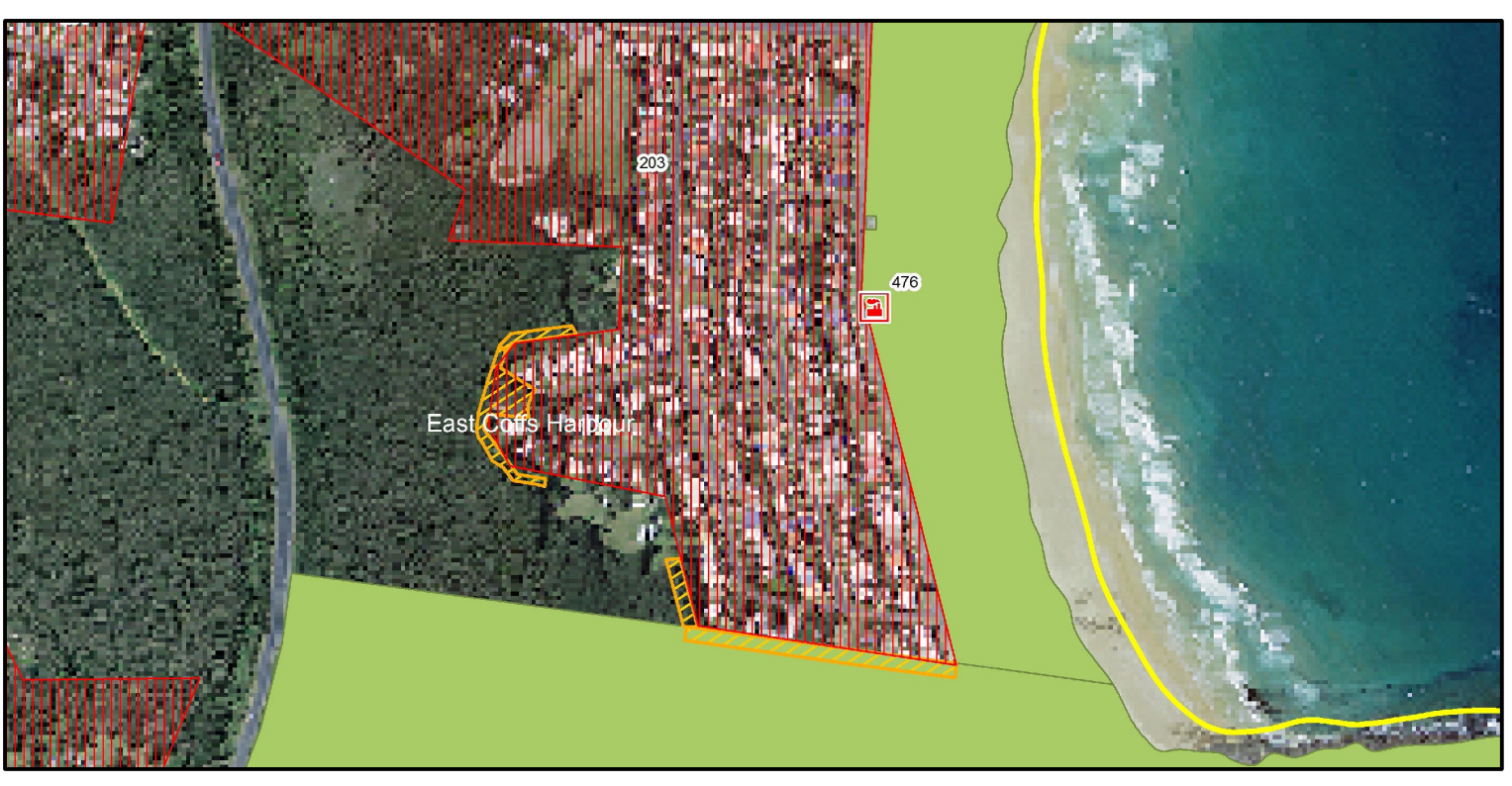


ID	Treatment strategy	Action	Agencies (Support)
T8	Preparedness	Inspect and maintain fire trails as per BFMF FTR	OEH
T9	Hazard Reduction	Inspect APZ and maintain annually	LGA
T16	Preparedness	Inspect and maintain fire trails as per BFMF FTR	FCNSW
T31	Hazard Reduction	Inspect APZ and maintain annually	RFS
T34	Hazard Reduction	Inspect SFAZ and maintain as required	LGA, RFS
T43	Community Education	Conduct doorknock to facilitate BFSPs	RFS
T11	Community Education	Publish media releases during the fire season	RFS
T27	Community Education	Conduct letterbox drop	RFS
T32	Hazard Reduction	Inspect APZ and maintain annually	LGA, OEH, RFS
T33	Hazard Reduction	Inspect SFAZ and maintain as required	FCNSW (RFS)
T37	Preparedness	Inspect and maintain fire trails as per BFMF FTR	TI, CL, LGA, OEH, FCNSW
T45	Community Education	Conduct letterbox drop	RFS
T55	Preparedness	Inspect and maintain fire trails as per BFMF FTR	OEH, FCNSW
T1	Hazard Reduction	Maintain fuels in accordance with Guidelines	RFS
T2	Hazard Reduction	Maintain fuels in accordance with Guidelines	OEH (LGA, RFS)
T3	Hazard Reduction	Maintain fuels in accordance with Guidelines	LGA (RFS)

Map Ref	Asset name	Asset type	Subtype	Risk level	Priority	Treatment
51	Emerald Beach Caravan Park	Human	Special Fire	Extreme	1B	T31
115	Forest Glen Estate	Human	Residential	Extreme	1C	T16,43
NA	Isolated Dwellings Coffs Harbour LGA	Human	Residential	Very High	2A	T9,11,34,37
114	Heritage Park / Lake Russell	Human	Residential	Very High	2A	T16,27,33
175	Orara East State Forest	Economic	Commercial	Very High	2A	T55
203	Sandy Beach East	Human	Residential	Very High	2A	T8,32
205	Emerald Beach	Human	Residential	Very High	2A	T8,32,34,45
475	NSP - Mooree Beach Shopping Centre	Human	Other	High	3A	T1
476	NSP - Sandy Beach Reserve	Human	Other	High	3A	T2
468	NSP - Korora Football Field	Human	Other	Low	NA	T3



Inset map 1. Emerald Beach



Inset map 2. Sandy Beach

Mid North Coast BFMF Bush Fire Risk Management Plan 2017

East Coffs Harbour - Map Display Area

Map 4 of 9

DRAFT

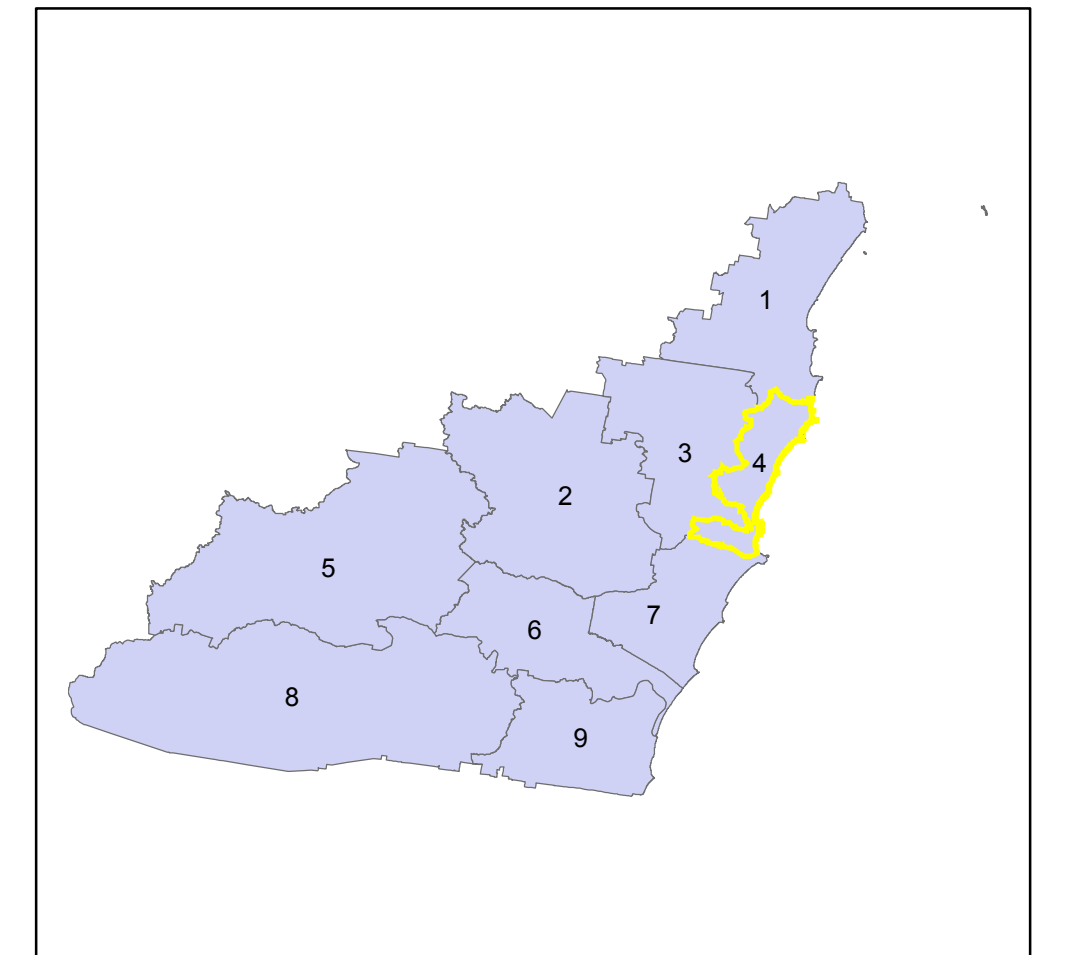
This Bush Fire Risk Management Plan (BFRMP) has been prepared by the Mid North Coast Bush Fire Management Committee (BFMC) pursuant to section 52 of the Rural Fires Act 1997.

The aim of this BFRMP is to reduce the adverse impact of bush fires on life, property and the environment.

The objectives of this BFRMP are to:

- reduce the number of human-induced bush fire ignitions that cause damage to life, property or the environment;
- manage fuel to reduce the spread and intensity of bush fires while minimising environmental/ecological impacts;
- reduce the community's vulnerability to bush fires by improving its preparedness; and
- effectively contain fires with a potential to cause damage to life, property and the environment.

This map forms part of the BFRMP for the Mid North Coast BFMC, covering the local government areas of Bellinger and Coffs Harbour. It should be viewed in conjunction with the accompanying BFRMP document which provides further details on the BFMC area, the assets assessed and the risk assessment process used.



Review

Under the Rural Fires Act 1997 this plan must be reviewed and updated within each successive five year period following the constitution of the BFMC. The Mid North Coast BFMC will also review this plan as necessary. This may be triggered by a range of circumstances, including but not limited to:

- changes to the BFMC area, organisational responsibilities or legislation;
- changes to the bush fire risk in the area; or
- following a major fire event.

Assets

This BFRMP identifies the assets that are considered by the Mid North Coast BFMC and community to be at risk from bush fires, assesses the bush fire risk to each asset and assigns treatments designed to mitigate the risk. Assets in the BFMC area identified as requiring treatments are listed in the assets table. Other assets within the BFMC area that were assessed as not requiring treatments within the life of this plan are listed in the appendix to the BFRMP document. The Map Ref number "NA" denotes non-spatial assets.

Treatments

Specific treatments assigned to assets in the Mid North Coast area are listed in the treatments table and linked to the assets which they are designed to protect. Standard BFMC wide treatments (i.e. not linked to a specific asset) which occur on an ongoing basis within the BFMC area are:

- reviewing the bush fire prone land map;
- ensuring developments in the bush fire prone land comply with Planning for Bush Fire Protection;
- using the Local Environment Plan's (LEPs) to control development in areas with a bush fire risk;
- varying the standard bush fire danger period as required;
- requiring permits during bush fire danger periods;
- prosecution of arsonists/offenders;
- investigation of bush fire cause;
- normal fire suppression activities;
- assessing and managing compliance with strategic fire-fighting resource allocation management systems;
- preparation of a S&S Operations Coordination Plan;

Note on LMAZ: All areas not specifically mapped as an APZ, SFAZ or FEZ are considered as LMAZ for this risk management plan. For areas identified by an LMAZ polygon on the map, please refer to the BFRMP document for the specific land management objectives.

Zone	Purpose	Suppression	Zone
Asset Protection Zone	To protect human life, property and highly valued public assets and values.	To enable the safe use of Direct Attack suppression strategies within the zone. To minimise bush fire impacts on undefended assets.	As per RFS document Standards for Asset Protection Zones.
Strategic Fire Advantage Zone	To provide strategic areas of fire protection advantage which will reduce the speed and intensity of bush fire, and reduce the potential for spot fire development. To aid containment of wildfires to existing management boundaries.	To improve the likelihood and safe use of Parallel Attack suppression strategies within the zone. Indirect Attack (back burning) in high to very high fire weather conditions within the zone. To reduce the likelihood of Crown fire development within the zone. and/or Spot fire ignition potential from the zone.	Zone width related to suppression objectives and dependant upon: - Topography - Aspect - Location of adjacent fire breaks - Mosaic pattern of treatment Assess Overall Fuel Hazard (OFH) once vegetation communities reach minimum fire thresholds within this plan. Management practices should aim to achieve mosaic fuel reduction patterns so that the majority of the SFAZ has an OFH of less than high.
Land Management Zone	To meet relevant land management objectives in area where APZs or SFAZs are not appropriate.	As per the land management and fire protection objectives of the responsible land management agency. To reduce the likelihood of spread of fires. To undertake mosaic burning.	As appropriate to achieve land management, e.g. heritage and/or fire protection e.g. broad scale mosaic burning objectives.
Fire Exclusion Zone	To exclude bush fires.	NA	Variable dependant on size of fire sensitive area requiring protection.

Disclaimer

The Mid North Coast BFMC makes every effort to ensure the quality of the information available on this map. Before relying on the information on this map, users should carefully evaluate its accuracy, currency or completeness of the information. Copyright: Mid North Coast BFMC 2017.

Authorized by _____ of Mid North Coast BFMC.
Date created: Friday, 2 June 2017