

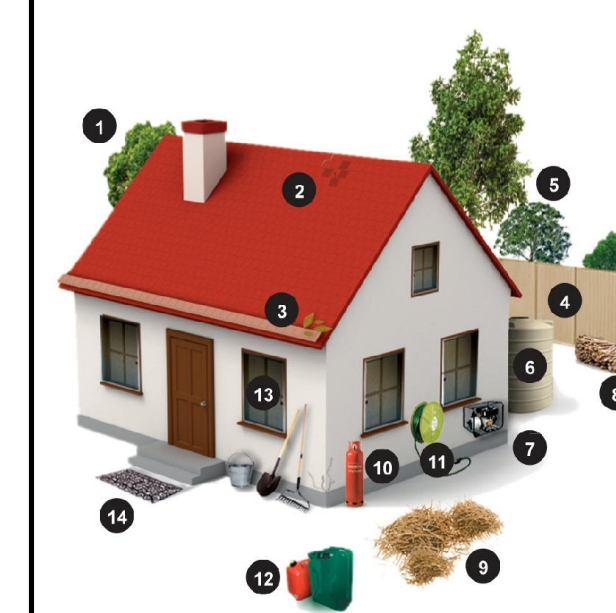


## Kembla Heights / Mt Kembla DRAFT

### WORKS PROGRAM

| Map ID  | Treatment Type      | Strategy             | Action Description                     | Responsible Agency          | Support Agency |
|---------|---------------------|----------------------|--|-----------------------------|----------------|
| Current | Community Education | Community Education  | Conduct Community Education Activities | FRNSW, LGA, DPHE (DEH), RFS | RFS            |
| Current | Preparedness        | Preparedness         | Maintain Access                        | LGA                         |                |
| Current | Preparedness        | Maintain Fire Trails | Maintain Fire Trails                   | DPHE (DEH), LGA, Private    |                |
| A1-A5   | Current             | Hazard Reduction     | APZ Maintenance                        | LGA, Private                |                |
| B1-B2   | Current             | Hazard Reduction     | Treat SFAZ                             | DPHE (DEH), LGA, Private    | RFS            |
| 1a-1j   | Proposed            | Hazard Reduction     | APZ Maintenance                        | Private, LGA                |                |
| 2a-2c   | Proposed            | Hazard Reduction     | Treat SFAZ                             | DPHE (DEH), LGA, Private    | RFS            |

### Is your property fire-safe?



1. Cut back any overhanging trees or shrubs and dispose of cuttings appropriately.
2. Check the condition of your roof and replace any damaged or missing tiles.
3. Clean leaves from the roof, gutters and downpipes and fit quality metal leaf guards.
4. Non-combustible fences are the most effective at withstanding the intense heat generated by bush fire.
5. Plant trees and shrubs that are less likely to ignite due to their low oil content.
6. If you have a water tank, dam or swimming pool, consider installing a Static Water Supply sign (SWS).
7. Enclose sub-floor areas.
8. Store wood piles well away from the house and keep covered.
9. Keep garden mulch away from the house and keep grass short.
10. Make sure the pressure relief valves on LPG cylinders face outwards.
11. Ensure you have a hose which is long enough to reach every part of the home.
12. Remove and store any flammable items away from the house.
13. Install metal fly-wire or solid screens to the outside windows and doors.
14. Have a non-combustible doormat.

| Zone                                 | Purpose   | Suppression Objectives  | Zone Characteristics  |
|--------------------------------------|---|---|---|
| <b>Asset Protection Zone</b>         | To protect human life, property and highly valued public assets and values.   | To enable the safe use of Direct Attack suppression strategies within the zone. To minimise bush fire impacts on undefendable assets.   | As per RFS document Standards for Asset Protection Zones.   |
| <b>Strategic Fire Advantage Zone</b> | To provide strategic areas of fire protection advantage which will reduce the speed and intensity of bush fires, and reduce the potential for spot fire development. To aid containment of wildfires to existing management boundaries. | To improve the likelihood and safe use of Parallel Attack suppression strategies within the zone. To reduce the likelihood of Indirect Attack (back burning) in high to very high fire weather conditions within the zone. To reduce the likelihood of Crown fire development within the zone. and/or Spot fire ignition potential from the zone. | Zone width related to suppression objectives and dependent upon:<br>•Topography<br>•Aspect<br>•Spotting propensity<br>•Location of adjacent firebreaks<br>•Mosaic pattern of treatment<br>•Assess Overall Fuel Hazard (OFH) once vegetation communities reach minimum fire thresholds within this plan.<br>Management practices should aim to achieve mosaic fuel reduction patterns so that the majority of the SFAZ has an OFH of less than high. |
| <b>Resident Preparation Zone</b>     | To identify that residents / property owners have a vital role to play in bush fire risk management and that they are responsible for their own property preparedness.  | To increase the preparedness of residents for bush fire and ensure that vegetation in close proximity to residential assets are adequately maintained. To provide a defensible space for residents / fire fighters and complement hazard reduction works carried out within Asset Protection Zones / Strategic Fire Advantage Zones.              | Residents / property owners should strive to achieve a 'Fire-Safe' property as outlined in the illustration above. Concerns regarding the bush fire safety of neighbouring properties should be raised with the NSW Rural Fire Service.   |

**LEGEND**

- Proposed Asset Protection Zone (Yellow hatched)
- Proposed Strategic Fire Advantage Zone (Blue hatched)
- Asset Protection Zone (Yellow solid)
- Strategic Fire Advantage Zone (Blue solid)
- Proposed Hazard Reduction (Pink hatched)
- Residential Preparation Zone (Pink solid)
- Tactical Fire Trail (Blue line)
- Strategic Fire Trail (Red line)

Scale: 0 to 0.6 km

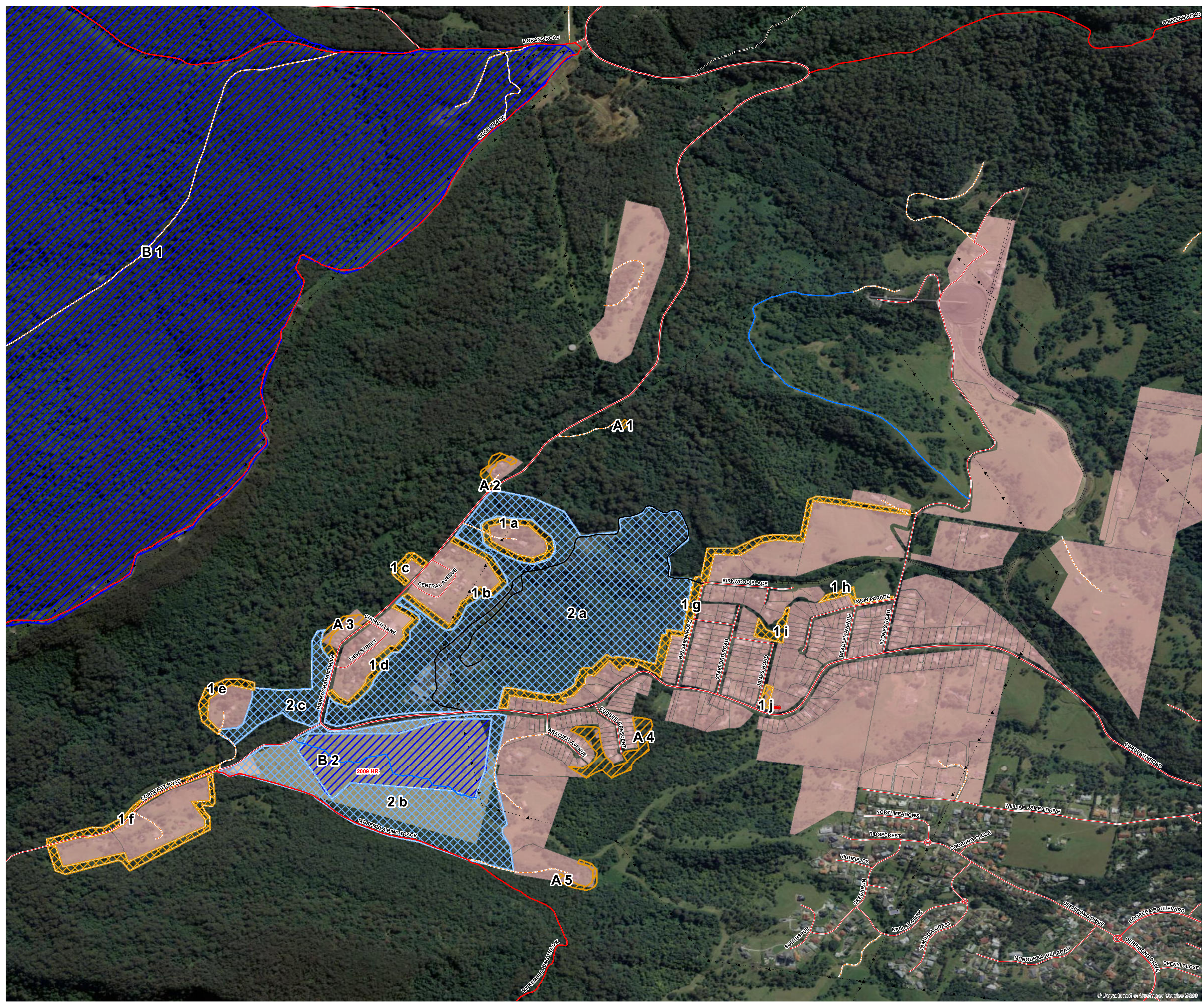
[www.rfs.nsw.gov.au](http://www.rfs.nsw.gov.au)

**PRODUCTION INFORMATION**

Base Data : LPMA Topo & Cadastre database | Print Date : 21 November 2023  
 Map Projection: GCS GDA 1994 | Produced by Planning & Environment Services -East  
 BFMC Approved: 8 November 2023

**WARNING INFORMATION**

1. This map has been prepared by the NSW Rural Fire Service (RFS) using data supplied by other agencies and entities. See the "Data Dictionary" for further information about the sources of this data.
2. The RFS has not verified or checked the data used to prepare this map. The map may contain errors and omissions. The RFS has not made any attempt to ground truth the map.
3. There will be a margin of error in relation to the location of features recorded on the map. The RFS is unable to specify the extent of magnitude of that margin of error.
4. Significant changes may have occurred:
  - i. In the time between which the data was originally collected and the map produced; and,
  - ii. Since the map was produced.
5. Users must, wherever possible, ground truth the map before relying on it or the accuracy of the map or the information recorded on the map for any purpose.
6. The RFS accepts no responsibility for any injury, loss or damage arising from the use of this map or any errors or omissions in the information recorded on the map.



**GET READY FOR A BUSH FIRE**

There are four simple steps to get ready for a bush fire

- DISCUSS**
- PREPARE**
- KNOW**
- KEEP**

**Get prepared for the Bush Fire Season and make your Bush Fire Survival Plan Now.**

**Go to [www.myfireplan.com.au](http://www.myfireplan.com.au) and discuss with your family what to do if a fire starts**

