



## Lakewood, High Country, The Station

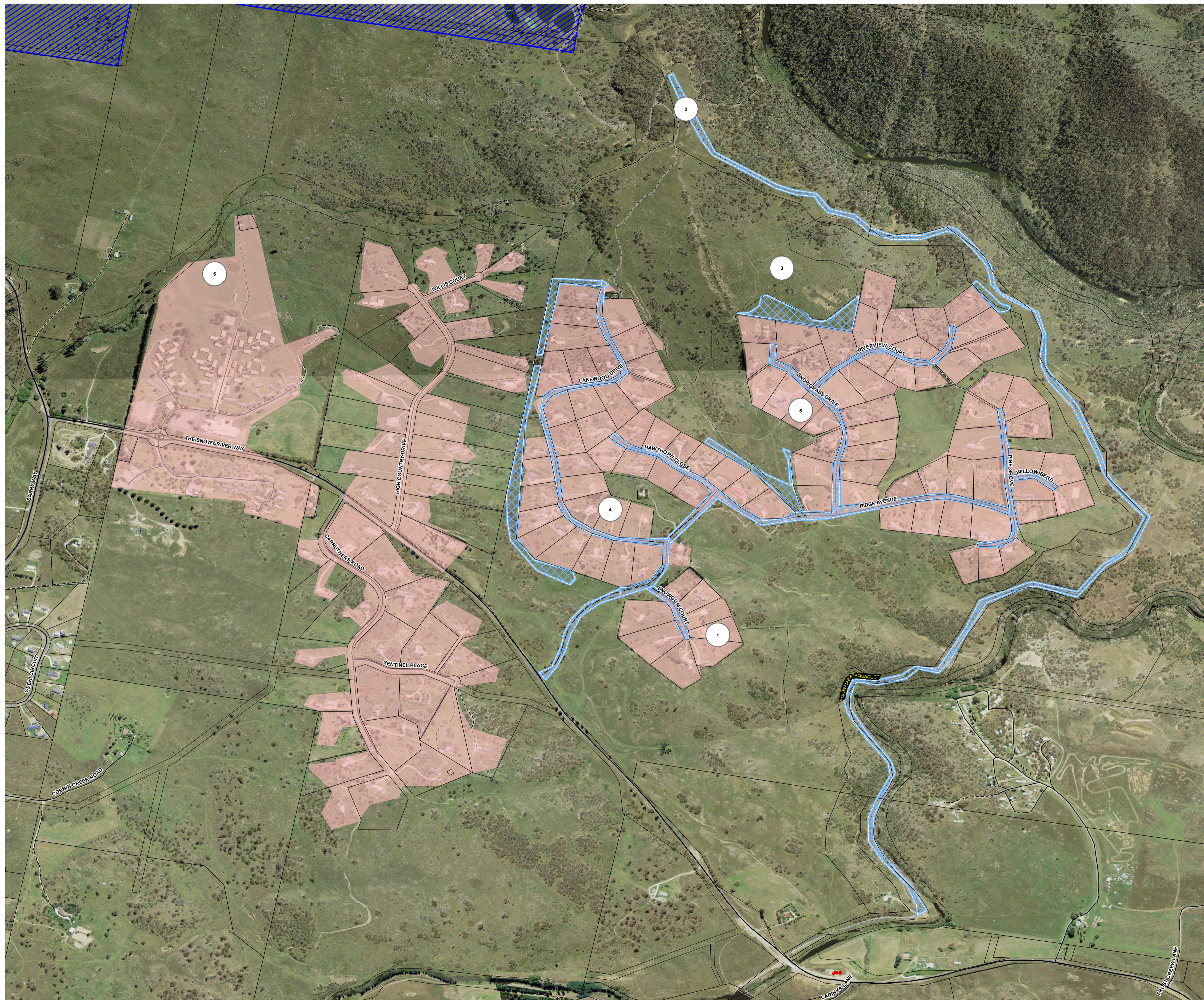
### WORKS PROGRAM

Map Ref No.	Strategy	Action	Responsible Agency	Target / Action Date (Year)
1	Hazard Reduction	Maintain resident preparation zone to APZ standard where possible	Private	on going
2	Preparedness	Maintain Fire Trail network to standard around Lakewood	Snowy Hydro	on going
3	Hazard Reduction	Maintain SFAZ and Trail network to for access around Lakewood	Private	on going
4	Property Planning	Develop Bush Fire Survival Plans.	Private	on going
5	Community Education	Work with the community regarding the importance of APZ maintenance	RFS	on going
6	Hazard Reduction	Maintain fuels in accordance with NSP guidelines	RFS	on going



### Is your property fire-safe?

1. Cut back any overhanging trees or shrubs and dispose of cuttings appropriately.
2. Check the condition of your roof and replace any damaged or missing tiles.
3. Clean leaves from the roof, gutters and downpipes and fit quality metal leaf guards.
4. Non-combustible fences are the most effective at withstanding the intense heat generated by bush fire.
5. Plant trees and shrubs that are less likely to ignite due to their size or corner.
6. If you have a water tank, den or swimming pool, consider installing a Static Water Supply sign (SWS).
7. Enclose sub-floor areas.
8. Store wood piles well away from the house and keep covered.
9. Keep garden mulch away from the house and keep grass short.
10. Make sure the pressure relief valves on LPG cylinders face outdoors.
11. Ensure you have a hose which is long enough to reach every part of the home.
12. Remove and store any flammable items away from the house.
13. Install metal fly-wire or solid screens to the outside windows and doors.
14. Have a non-combustible doormat.



Zone	Purpose	Suppression Objectives	Zone Characteristics
<b>Asset Protection Zone</b> 	To protect human life, property and highly valued public assets and values.	To enable the safe use of Direct Attack suppression strategies within the zone. To minimise bush fire impacts on undefendable assets.	As per RFS document Standards for Asset Protection Zones.
<b>Strategic Fire Advantage Zone</b> 	To provide strategic areas of fire protection advantage which will reduce the speed and intensity of bush fires, and reduce the potential for spot fire development. To aid containment of wildfires to existing management boundaries.	To improve the likelihood and safe use of Parallel Attack suppression strategies within the zone. Indirect Attack (back burning) in high to very high fire weather conditions within the zone. To reduce the likelihood of Crown fire development within the zone. Management practices should aim to achieve mosaic fuel reduction patterns so that the majority of the SFAZ has an OFH of less than high.	Zone width related to suppression objectives and dependant upon: •Topography •Aspect •Spotting propensity •Location of adjacent firebreaks •Mosaic pattern of treatment •Assess Overall Fuel Hazard (OFH) once vegetation communities reach minimum fire thresholds within this plan. Management practices should aim to achieve mosaic fuel reduction patterns so that the majority of the SFAZ has an OFH of less than high.
<b>Resident Preparation Zone</b> 	To identify that residents / property owners have a vital role to play in bush fire risk management and that they are responsible for their own property preparedness.	To increase the preparedness of residents for bush fire and ensure that vegetation in close proximity to residential assets are adequately maintained. To provide a defensible space for residents / fire fighters and complement hazard reduction works carried out within Asset Protection Zones / Strategic Fire Advantage Zones.	Residents / property owners should strive to achieve a 'Fire-Safe' property as outlined in the illustration above. Concerns regarding the bush fire safety of neighbouring properties should be raised with the NSW Rural Fire Service.

**LEGEND**

Proposed Asset Protection Zone	Proposed Hazard Reduction
Proposed Strategic Fire Advantage Zone	Residential Preparation Zone
Asset Protection Zone	Proposed Fire Trail
Strategic Fire Advantage Zone	Fire Trail

**PREPARE. ACT. SURVIVE.**

**BUSH FIRE INFORMATION LINE**  
**1800 NSW RFS**  
 1 8 0 0 6 7 9 7 3 7  
[www.rfs.nsw.gov.au](http://www.rfs.nsw.gov.au)

**BUSH FIRE SERVICE**  
 RURAL FIRE SERVICE  
 SAVING LIVES

**PRODUCTION INFORMATION**

Base Data: LPMA Cadastre and Topo Database  
 Map Projection: GCS GDA 1994  
 Print Date: 14/06/18  
 Produced by: PES South  
 Scale 1:8000

BFMC Approved

**WARNING INFORMATION**

1. This map has been prepared by the NSW Rural Fire Service ("The Service") using data supplied to it by other agencies and entities. See the 'Data Dictionary' for further information about the sources of this data.
2. The Service has not verified or checked the data used to prepare this map. The map may contain errors and omissions. The Service has not made any attempt to ground truth the map.
3. There will be a margin of error in relation to the location of features recorded on the map. The Service is unable to specify the extent or magnitude of that margin of error.
4. Significant changes may have occurred:
  - i. In the time between which the data was originally collected and the map produced; and
  - ii. Since the map was produced.
5. Users must, wherever possible, ground truth the map before relying on it or the accuracy of the map or the information recorded on the map for any purpose.
6. The Service accepts no responsibility for any injury loss or damage arising from the use of this map or any errors or omissions in the information recorded on the map.

**FIRE HAS A PLAN DO YOU?**

**Get prepared for the Bush Fire Season and make your Bush Fire Survival Plan Now.**  
 Go to [www.myfireplan.com.au](http://www.myfireplan.com.au) and discuss with your family what to do if a fire starts near you.