



VALLA BEACH

What is Your Bush Fire Threat?

- Flame Impact**
 You and your property are likely to be directly impacted by flame, deadly levels of radiant heat, significant embers and smoke from a bush fire. The risk of death and property destruction from bush fire is greatest in this area. Leaving early is your safest option.
- Radiant Heat Impact**
 You and your property are likely to be impacted by deadly levels of radiant heat, significant embers and smoke from a bush fire. You and your property must be well prepared if you choose to stay and defend.
- Ember Impact**
 You and your property are likely to be impacted by lower levels of radiant heat, significant embers and smoke from a bush fire. You and your property must be well prepared if you choose to stay and defend.
- Be Aware**
 Embers can cause fires kilometres from the main fire and can impact on houses up to one hour before the fire arrives and several hours after the fire has passed. It only takes one ember to ignite your house and property. Ensure that you and your property are well prepared and monitor your property carefully during a bush fire.

NOTE: Impact areas have been prepared at a community level and are based on an Extreme Fire Danger Rating. Information provided on this map is not to be used for building / planning purposes.

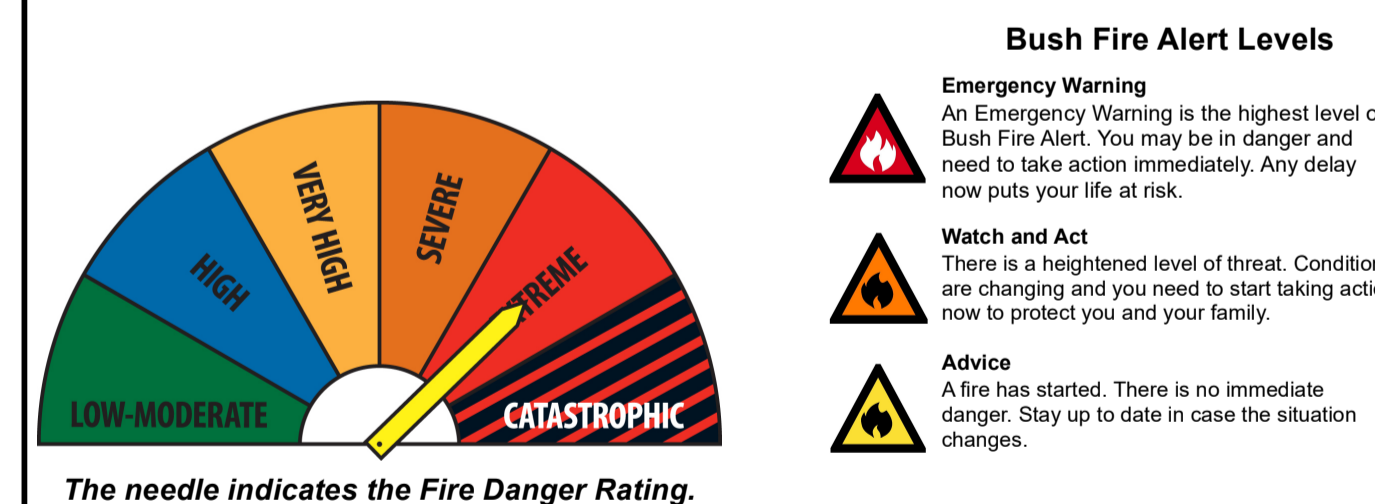
A well designed and prepared building will provide more protection against bush fire. See the accompanying Preparation Map for more information.

- Neighbourhood Safer Place**
 Neighbourhood Safer Places are a Place of Last Resort during a bush fire. Have you identified a Neighbourhood Safer Place and other safer locations in your Bush Fire Survival Plan?
 Your nearest NSP is located at:
 Valla Beach Reserve off Ocean View Drive or Nambucca Plaza or Morgo Reserve, Urunga
- Main Road**
 Roads may become impassable during a bush fire. Your safest option is to Leave Early.
- Leave Early**
 Leaving Early means leaving long before a bush fire is in your area. On days of Catastrophic Fire Danger you should leave early in the morning or even the night before.

Your Bush Fire Survival Options



Stay informed about local fire conditions. Check the NSW RFS website or listen to the local emergency radio broadcaster for information on the Fire Danger Rating and Bushfire Alert Level.



KEEP YOURSELF INFORMED
 Emergency Local Broadcaster
 ABC 92.3
 RTA Traffic Info Line: 132 701
www.facebook.com/nswrfs
www.twitter/nswrfs

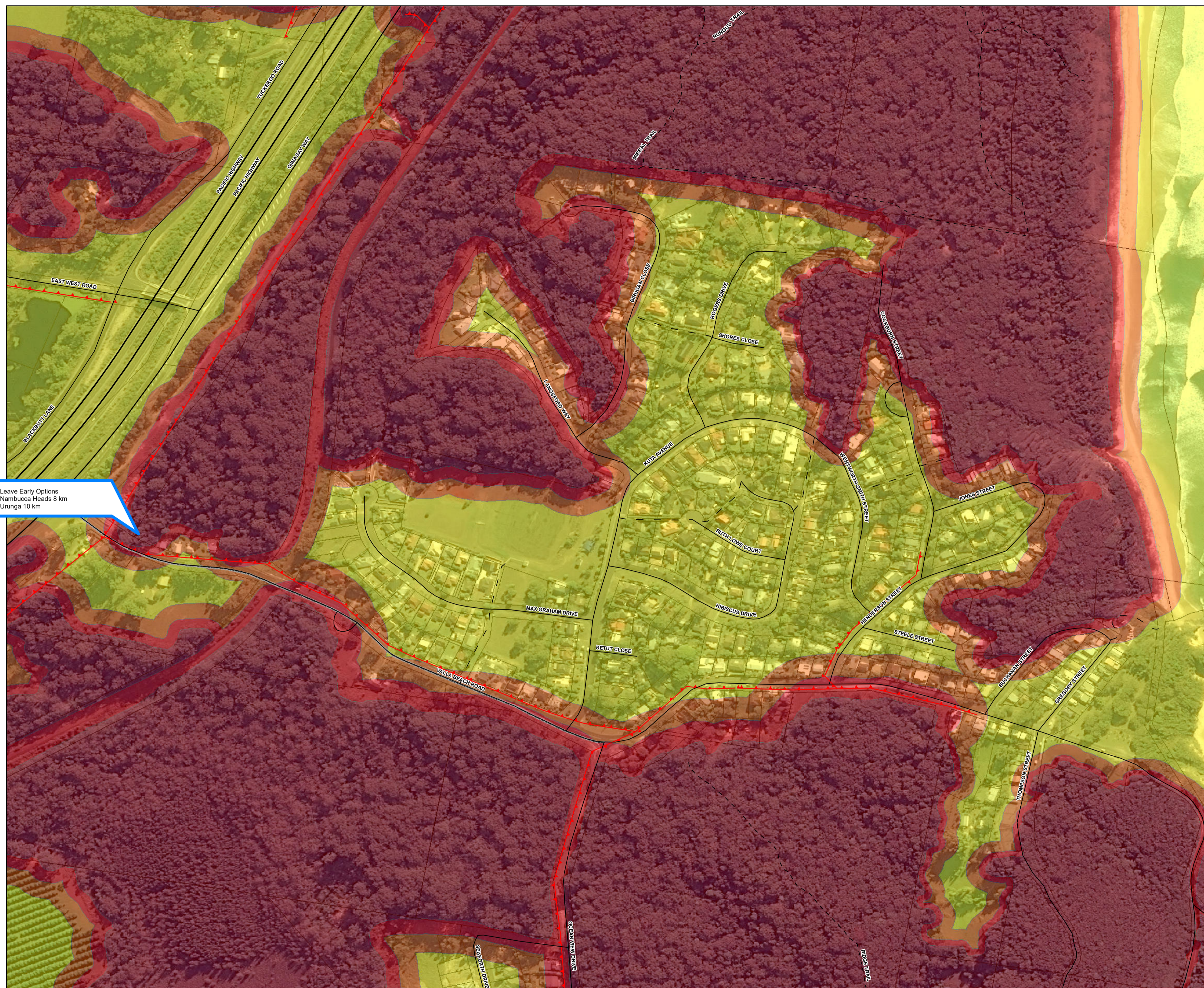
BUSH FIRE INFORMATION LINE
1800 NSW RFS
1 8 0 0 6 7 9 7 3 7
www.rfs.nsw.gov.au
 Fires Near Me smart phone application
 My Road Info smart phone application

PRODUCTION INFORMATION

Base Data: LPMA Casastre and Topo Database
 Map Projection: GCS GDA 1994
 Print Date: December 2020
 Produced by: NSW RFS Community Protection Planning
 BFMC Approval: August 2020

WARNING INFORMATION

- This map has been prepared by the NSW Rural Fire Service ("The Service") using data supplied to it by other agencies and entities. See the "Data Dictionary" for further information about the sources of this data.
- The Service has not verified or checked the data used to prepare this map. The map may contain errors and omissions. The Service has not made any attempt to ground truth the map.
- There will be a margin of error in relation to the location of features recorded on the map. The Service is unable to specify the extent or magnitude of that margin of error.
- Significant changes may have occurred.
 - In the time between which the data was originally collected and the map produced; and
 - Since the map was produced.
- Users must, wherever possible, ground truth the map before relying on it or the accuracy of the map or the information recorded on the map for any purpose.
- The Service accepts no responsibility for any injury loss or damage arising from the use of this map or any errors or omissions in the information recorded on the map.



Leave Early Options
 Nambucca Heads 8 km
 Urunga 10 km

GET READY FOR A BUSH FIRE

There are four simple steps to get ready for a bush fire:



Get prepared for the Bush Fire Season and make your Bush Fire Survival Plan Now.

Go to www.myfireplan.com.au and discuss with your family what to do if a fire starts near you.

