

Bush Fire Risk Management Plan

—
Planning
together



Northern Rivers Bush Fire Management Committee

Local Government Areas of Richmond Valley, Kyogle and Lismore City Councils

Bush Fire Coordinating Committee – Policy No 01/2023
Adopted by the Bush Fire Coordinating Committee – Minute No 104.11

Approval

In accordance with the *Rural Fires Act 1997*, this Bush Fire Risk Management Plan has been prepared by the Northern Rivers Bush Fire Management Committee and has been endorsed at the BFMC meeting on **<DATE>** for submission to the Bush Fire Coordinating Committee.

Recommended

<Name>

Chair

Northern Rivers Bush Fire Management Committee

Approved

Chair

Bush Fire Coordinating Committee

Contents

Approval	2
Introduction	4
1.1 Acknowledgement to Country	4
1.2 Introduction	4
1.3 Aim and objectives	5
1.4 The Planning Process	5
Risk Assessment	6
2.1 Assets	6
2.2 Neighbourhood Safer Places	7
2.3 Risk Identification and Analysis	8
Treating Risk.....	9
3.1 Treatments	9
3.2 Bush Fire Management Zones	14
3.3 Relationship with other Plans	14
Communication and Consultation	15
4.1 Communication and Consultation	15
Performance Monitoring and Review	16
5.1 Monitoring and Review	16
Appendices	17
Focus Areas.....	18
Fuel Management Register	32
Fuel Management Register	33
Maps	41
Communication Strategy	42

Chapter 1

Introduction

1.1 Acknowledgement to Country

The Northern Rivers Bush Fire Management Committee (BFMC) acknowledges and pays respect to the Traditional Owners of the lands on which we work, and the lands we travel through. We also acknowledge our Elders – past, present and emerging.

1.2 Introduction

A Bush Fire Risk Management Plan (BFRMP) provides information on the bush fire risks within your community. It also outlines how land managers along with fire authorities are going to effectively manage those risks through implementing various treatment strategies.

The development of a BFRMP is a legal requirement under section 52 of the *Rural Fires Act 1997* (NSW) (the Act). The BFRMP, including the accompanying appendices and spatial data, is prepared by Northern Rivers BFMC and is approved by the Bush Fire Coordinating Committee (BFCC).

A BFRMP is a strategic document that identifies community assets and values that may be at risk from bush fire and identifies coordinated multi-agency objectives and associated treatment strategies to reduce the risk over a five year period. Treatment strategies may include such actions as hazard reduction burning, mechanical clearing, targeted community engagement programs and ignition prevention activities. The treatment strategies are implemented by the member agencies / organisation of the BFMC and are monitored and reported on an ongoing basis.

This document (including its appendices) and the accompanying maps form the BFRMP for the Northern Rivers BFMC area. It covers both public and private land and is to be reviewed and monitored annually.

This BFRMP is applied in conjunction with the BFMC's Fire Access and Fire Trail (FAFT) Plan and Operations Coordination Plan to provide a comprehensive approach to risk mitigation and operational preparedness.

1.3 Aim and objectives

The aim of this BFRMP is to reduce the risk of adverse impacts of bush fires on life, property, infrastructure and environmental, economic, cultural, agricultural and community assets.

The objectives of this BFRMP are to:

- Objective 1:** Reduce the number of human-induced bush fire ignitions and their potential to cause damage to life, property, infrastructure and environmental, economic, cultural, agricultural and community assets.
- Objective 2:** Manage fuel to reduce the rate of spread, intensity and impact of bush fires on life and assets while minimising damage to environmental and cultural values.
- Objective 3:** Increase the community's resilience to bush fires by improving its preparedness, response and recovery.
- Objective 4:** Provide advice and strategies to plan, prepare and implement activities to effectively contain fires with the potential to cause damage to life, property, infrastructure and environmental, economic, cultural, agricultural and community assets.

1.4 The Planning Process

The Australia/New Zealand Standard AS/NZS 31000: 2018 Risk Management was used to guide the bush fire risk assessment process. This is outlined in Figure 1 below.



Figure 1: Overview of the risk assessment process

Chapter 2

Risk Assessment

2.1 Assets

An asset is something that is valued by the community. There are four main categories of assets considered in the BFRMP, each with subcategories.

2.1.1 Human settlement

- Residential areas including urban-bushland interface areas and rural properties; and
- Special Fire Protection areas including schools, hospitals, nursing homes, and tourist facilities.

2.1.2 Economic

- Agricultural - includes crops, bulk grain storage, grazing, horticulture, intensive animal production, livestock, fencing and major machinery sheds;
- Commercial - includes commercial services, Defence facilities, research facilities and ports and water transport;
- Electrical - including transmission lines, substations and electricity generation plants;
- Forestry assets – native forests, hardwood and softwood plantations;
- Industrial - includes general purpose factories, food processing factories, major industrial complexes, abattoirs, oil refineries and sawmills;
- Infrastructure – airports, communication towers, roads, railways, waste treatment plants, water treatment plants;
- Mining - combustible, non-combustible and underground;
- Recreational – community recreation facilities and major sporting and recreation complexes; and
- Water catchments.

2.1.3 Environmental

- Threatened Flora and Fauna – includes iconic species such as koalas and the Nightcap Oak, threatened species, threatened ecological communities (TECs), and threatened populations at risk of extinction in NSW;
- Fire sensitive vegetation communities – includes regulated wetlands, RAMSAR wetlands and rainforest vegetation communities;
- Land covered by statutory conservation and biodiversity agreements;
- World Heritage and national and state heritage listed areas;
- Land with geological significance – includes land with high erosion potential, or geotechnical risk, karst landscapes and sand dunes;
- Environmentally significant land identified by an Environmental Planning Instrument - including Local Environment Plans (LEPs) and State Environmental Planning Policies (SEPPs); and
- Other locally important assets – including vegetation identified as bush fire refugia, bush regeneration areas and Assets of Intergenerational Significance (AIS).

Note: not all of these assets have quantitative risk assessment methodologies.

2.1.4 Cultural

- Aboriginal heritage – including items recorded in the Aboriginal Heritage Information Management System and predictive site locations from the Aboriginal Sites Decision Support Tool (ASDST);
- Non-Indigenous cultural heritage – items and places from the State Heritage Inventory, Section 170 Heritage and Conservation Register and the Historic Heritage Information Management System.

Assets across all four categories have been identified using geographic information system (GIS) data including land use classifications and cadastre (Lot boundaries), as well as local knowledge.

2.2 Neighbourhood Safer Places

A Neighbourhood Safer Place (NSP) is defined by section 62C of the *Rural Fires Act 1997* as “land or a building designated as a neighbourhood safer place”. NSPs provide a place of last resort for people during a bush fire. All designated NSP locations for NSW are available at www.rfs.nsw.gov.au.

The Northern Rivers BFMC considered the number and location of Neighbourhood Safer Places (NSPs) within the BFMC area. All NSPs in Northern Rivers BFMC area require ongoing treatment by the applicable land owner to ensure that the asset remains viable as a place of last resort for people during a bush fire. Therefore, all NSPs within the BFMC area are required to be treated and have been included in the Fuel Management Register.

2.3 Risk Identification and Analysis

This BFRMP is underpinned by a risk quantification methodology based on fire behaviour modelling (Phoenix RapidFire). The fire simulation process applies an ignition model, local historical weather and historical fire information to determine where fires are most likely to occur in the landscape. A Bayesian Decision Network model is used to quantify the bush fire risk to each asset in the landscape based on relevant vulnerability criteria.

Bush fire risks may also be identified during the process from qualitative assessment methodologies. For example where expert local knowledge identifies a significant area of concern, challenges in firefighting or locally significant values.

The risk maps for each asset category are provided in Appendix 3.

For a detailed description of the methodology used for assessing bush fire risk, please see [BFCC Policy 01/2023 - Bush Fire Risk Management and supporting documents](#), available on the NSW RFS website.

Chapter 3

Treating Risk

3.1 Treatments

The purpose of risk treatment is to reduce the likelihood and/or harmful consequences of bush fire to the community and environment, through a process of selecting and implementing risk treatment options that modify the characteristics of the hazard, the community or the environment. There are three types of treatments considered in the BFRMP:

1. BFMC Wide Treatments;
2. Focus Area Treatments; and
3. Fuel Management Treatments.

BFMC members and land managers routinely implement risk treatment strategies in accordance with legislative requirements, policy and asset management. For example, vegetation management, restrictions on development in bush fire prone areas, bush fire education and fire suppression activities. We refer to these as BFMC Wide Treatments. These activities occur outside the BFRMP and reduce the bush fire risk to assets and communities throughout the BFMC area.

The risk assessment process applied in this BFRMP assists BFMCs in identifying strategic Fuel Management Treatments and Focus Area Treatments.

Fuel Management Treatments include hazard reduction burns and vegetation clearing. These are designed to protect life, property and the environment from intense bush fires. While they will not completely stop bush fires from starting and spreading, these treatments can help protect firefighters, assist with containment strategies and reduce the potential damage to community assets and environmental values.

Focus Areas are groups of assets in the landscape that the BFMC has identified as having significant or unacceptable risk. The BFMC has specifically identified Focus Area Treatments for these areas and they prioritise these treatments over all others.

3.1.1 BFMC Wide Treatments

BFMC wide treatments are activities which are undertaken to reduce the overall bush fire risk within the BFMC area.

The following table identifies the BFMC wide treatments applicable to the Northern Rivers BFMC area.

TREATMENT	DESCRIPTION
Plan of Operations	Under Part 3 Division 4 Sections 52 and 53 of the <i>Rural Fires Act 1997</i> , BFMCs are required to prepare and submit to the BFCC a Plan of Operations and must review the Plan every two years. The Plan of Operations details the co-ordinated firefighting arrangements and fire management practices and ensures that each BFMC member is able to execute its role and specific responsibilities.
Treatments in the Fire Access and Fire Trail Plan Treatment Register	<p>Under section 52 of the Act, BFMCs must develop a Fire Access and Fire Trail (FAFT) Plan for their area and must review the FAFT Plan every five years.</p> <p>Fire trails are an important part of ensuring firefighters can access fires and safely contain them. Fire trails may also be used as fire control lines for hazard reduction burns, however this is not their primary purpose.</p> <p>In accordance with the NSW RFS Fire Trail Standards the BFMC may prepare a Treatment Register which sets out a schedule of works for the construction and maintenance of fire trails. The Standards provide that the Treatment Register is updated annually and typically forms part of a FAFT Plan.</p> <p>Treatments contained within the FAFT Plan Treatment Register (as amended from time to time) are BFMC Wide Treatments under this BFRMP.</p>
Ignition Prevention Plan	The BFMC will develop an Ignition Prevention Plan (IPP). The purpose of the IPP is to provide firefighting authorities, NSW Police and Local Authorities with localised strategies to prevent ignitions. In particular, deliberate or careless ignitions and illegal fires.
Land & Asset Management	There are organisational plans, standard policies, Regulations and procedures for the management of assets and/or land managed by BFMC members. For example vegetation clearance around power lines, maintenance of public land, and agency-specific fire management plans.
Local Environmental Plans	<p>Local Environmental Plans (LEPs) guide planning decisions for local government areas. They do this through zoning and development controls, which provide a framework for the way land can be used.</p> <p>LEPs can be used to exclude development in significant bush fire risk areas or in areas where bush fire protection measures cannot be incorporated.</p>
Environmental Approval for all Hazard Reduction	Land management agencies will obtain environmental approval (through the Bush Fire Environmental Assessment Code, or other approval process) to undertake any activities that have the potential to impact the environment e.g. hazard reduction burning or vegetation removal. The environmental assessment process considers flora, fauna, threatened species, cultural assets, soil erosion, riparian areas, biodiversity fire regimes, weeds and air pollution (smoke).
Bush Fire Prone Land Mapping and Planning for Bush Fire Protection	<p>Section 10.3 of the <i>Environmental Planning & Assessment Act 1979</i> requires the land subject to a BFRMP to be mapped in accordance with Guide for Bush Fire Prone Land Mapping. Bush Fire Prone Land Maps are used as a trigger mechanism to ensure that new development is approved in accordance with Planning for Bush Fire Protection (PBP).</p> <p>PBP sets planning specifications which aim to increase the likelihood of structures surviving a bush fire, and in combination with Australian Standard 3959 Building in Bush Fire Prone Areas which specifies building standards.</p> <p>All new development on Bush Fire Prone Land will be assessed in accordance with PBP.</p>

Hazard complaints	<p>It is the duty of land owners to prevent the occurrence of bush fires on, and to minimise the danger of the spread of bush fires on or from, their land.</p> <p>Under section 66 of the <i>Rural Fires Act 1997</i>, a Bush Fire Hazard Reduction Notice can be issued, directing a hazard be treated. This Notice can be issued to private and public landowners. If the Bush Fire Hazard Reduction Notice is not complied with, the NSW RFS will treat the hazard, and may pursue the cost from the landowner.</p> <p>Under Section 73 and Section 74E of the Act, the NSW RFS Commissioner may direct hazard reduction works to be undertaken.</p>
Community engagement	<p>This includes state-wide public awareness initiatives as well as local community interactions between fire agencies, land managers and local communities.</p>
BFMC Bush Fire Danger Period	<p>The <i>Rural Fires Act 1997</i> sets the statutory Bush Fire Danger Period.</p> <p>A Fire Permit is required for burning activities during the Bush Fire Danger Period in Rural Fire districts and at all times in Fire and Rescue (FRNSW) districts around the state.</p> <p>Fire Permits help ensure fire is used safely during the Bush Fire Danger Period. A permit imposes conditions on the way a fire is lit and maintained, and can only be issued by authorised Permit Issuing Officers.</p> <p>The permit provides landholders who intend to burn, with the conditions they are to adhere with to ensure adequate and appropriate measures are in place, and that fires remain under control.</p>
Firefighting response	<p>All firefighting authorities in NSW have legislation, regulations, policies and procedures for responding to bush fire events within their area of jurisdiction.</p>
Prosecution of arsonists / offenders	<p>Under the <i>Rural Fires Act 1997</i> persons may be prosecuted for a range of offences. These offences include:</p> <ul style="list-style-type: none"> • deliberately setting fire to the land of another person without consent; • lighting a fire without notifying the relevant authority; • breaching the conditions on a fire permit; • lighting a fire during a Total Fire Ban; • allowing fire to escape their property; or • other breaches of the Act.

Table 1: BFMC Wide Treatments

3.1.2 Fuel Management Treatments

Hazard reduction is an important component of managing bush fire risk. Hazard reduction involves removing or reducing the fuel (vegetation) in order to modify the potential fire behaviour, to reduce extreme bush fire behaviour and associated impact to firefighters and to community assets and values, to assist in fire suppression and to enable appropriate fire regimes to be implemented.

The BFRMP Fuel Management Register is a list of hazard reduction activities that the Northern Rivers BFMC has identified as strategic treatments in the BFRMP. The fuel management treatments include prescribed burns, vegetation removal in BFMC-managed asset protection zones and the development or maintenance of fire breaks.

All hazard reduction activities listed in the Fuel Management Register are proposed to be completed within the five-year term of BFRMP, however, those activities that are linked to a Focus Area will be treated as a priority. The occurrence of bush fires will necessitate annual revision and reprioritisation of the treatment schedules.

See Appendix 2 for the Northern Rivers BFMC Fuel Management Register.

3.1.3 Focus Area Treatments

The management of bush fire risks involves a coordinated approach from fire authorities, landowners, land managers, planning authorities, local councils and the community. Even with the combined resources of these stakeholders, it is still not possible or practical to actively treat all bush fire risks across the landscape. It is therefore important for communities and BFMCs to determine what areas will form the focus for the application of specific treatment strategies in this BFRMP.

Focus Areas were determined through an analysis of the quantitative risk assessment data, but also consider factors such as the social vulnerability of the community, access and egress and local significance.

There are seven (7) Focus Areas within the Northern Rivers BFRMP. These are:

- Bonalbo / Tabulam;
- Border Ranges;
- Hogarth / Mummulgum;
- Nightcap National Park;
- Rappville / Camira / Whiporie;
- Tooloom / Yabbra; and
- Woodburn / Broadwater / Evans Head.

These are areas that have been specifically identified as having an unacceptable risk and require additional, targeted treatment strategies within the five-year BFRMP.

There are four key objectives available to manage the bush fire risk to Focus Areas and each objective has a number of associated treatment strategies (Table 2). The BFMC has identified the most appropriate objectives and treatment strategies for each Focus Area. The Focus Area treatment strategies selected by the BFMC will be addressed annually as part of the BFMC Annual Works Plan.

KEY OBJECTIVE	FOCUS AREA TREATMENT STRATEGY
Fuel Management Reduction or modification of bush fire fuel with the intent of slowing the spread of bush fire and aiding firefighting operations.	Asset Protection Zone
	Ignition Management Zone
	Strategic Fire Advantage Zone
	Land Management Zone
	Fire Break; Linear
	Fire Break; Transport Corridor
	Grazing Program
Ignition Prevention Prevention or reduction of bush fire ignitions (arson & accidental).	Community Engagement; Risk Awareness
	Access Restriction; addressed in BFMC Ignition Prevention Plan
	Patrol; addressed in BFMC Ignition Prevention Plan
Community Preparedness Measures to enhance community preparedness for bush fire in order to reduce risk to life and assets.	Community Engagement; Risk Awareness
	Community Engagement; Planning
	Community Engagement; Preparation
	Community Engagement; Community Resilience
	Community Engagement; Community Response
Response Area specific response requirements in addition to standard procedures.	Operational Readiness Arrangements; addressed in BFMC Plan of Operations
	Neighbourhood Safer Place; addressed in BFMC Plan of Operations
	Pre-Incident Plan; addressed in BFMC Plan of Operations
	Fire Access or Fire Trail; addressed in BFMC FAFT Plan

Table 2: Key objectives for treatment strategies.

For more information on Treatment Strategies see Annexure B of [BFCC Policy 01/2023 - Bush Fire Risk Management](#) See Appendix 1 for the Northern Rivers Focus Area descriptions, Key Objectives and Treatment Strategies.

3.2 Bush Fire Management Zones

Bush Fire Management Zones identified within the Northern Rivers BFMC area have been mapped as part of the Fuel Management Register. These zones identify the fire management intent for a specific area. The five categories of Bush Fire Management Zones are:

- Asset Protection Zone (APZ);
- Strategic Fire Advantage Zone (SFAZ);
- Ignition Management Zone (IMZ)
- Land Management Zone (LMZ); and
- Fire Exclusion Zone (FEZ).

See Annexure C of [BFCC Policy 01/2023 - Bush Fire Risk Management](#) for further information on Bush Fire Management Zones including a description of the zones and their purposes.

3.3 Relationship with other Plans

Under section 52 of the *Rural Fires Act 1997*, each BFMC must prepare and submit to the Bush Fire Coordinating Committee a draft of each of the following:

- A bush fire management plan (defined to be both a BFRMP and a fire access and fire treatment plan (FAFT Plan)); and
- A Plan of Operations.

These BFMC planning documents should complement each other, however, a FAFT Plan prevails over the BFRMP to the extent of any inconsistency in accordance with section 59A(4) of the Act.

Treatments contained within the FAFT Plan Treatment Register (as amended from time to time) are BFMC Wide Treatments under this BFRMP.

Additionally, an Ignition Prevention Plan will be prepared for the BFMC. Other plans such as Community Protection Plans, agency specific Fire Management Strategies, or private property fire plans may be prepared, however as this BFRMP has been prepared in accordance with the Act, all other plans are subordinate to it.

Chapter 4

Communication and Consultation

4.1 Communication and Consultation

Community participation is an integral part of risk management. The BFMC undertook consultation with the community during the development phase of the BFRMP as outlined in Appendix 4. The Communication Strategy involved developing and implementing a process to address the needs, issues and concerns of stakeholders within the BFMC area in regards to the BFRMP. This involved member agencies engaging with their stakeholders to ensure their views are represented in the BFRMP and that they understand their own responsibility in risk management.

In accordance with section 57 of the *Rural Fires Act 1997*, the draft BFRMP was placed on public exhibition to provide an opportunity for the community to have formal input, and that input has been taken into account and reflected in the BFRMP.

This plan will be available from the RFS web site and must also be available for public inspection at, and be able to be obtained free of charge from, the office of the local authority for the area to which it relates during ordinary office hours.

Chapter 5

Performance Monitoring and Review

5.1 Monitoring and Review

This BFRMP must be reviewed and updated within each successive five-year period from the constitution of the BFMC. The Northern Rivers BFMC will also review this BFRMP as necessary to account for any changes in context or risk on account of changes to the BFMC area, organisational responsibilities or legislation; changes to the bush fire risk in the area; changes to the Treatment Register; or following a major fire event.

The BFMC is required to monitor progress towards the completion of treatment works listed in the BFRMP, and the timeliness of the works. This is done through an Annual Works Plan and also an Annual Report. The BFRMP may also be audited at the request of the NSW RFS Commissioner or the BFCC.

Appendices

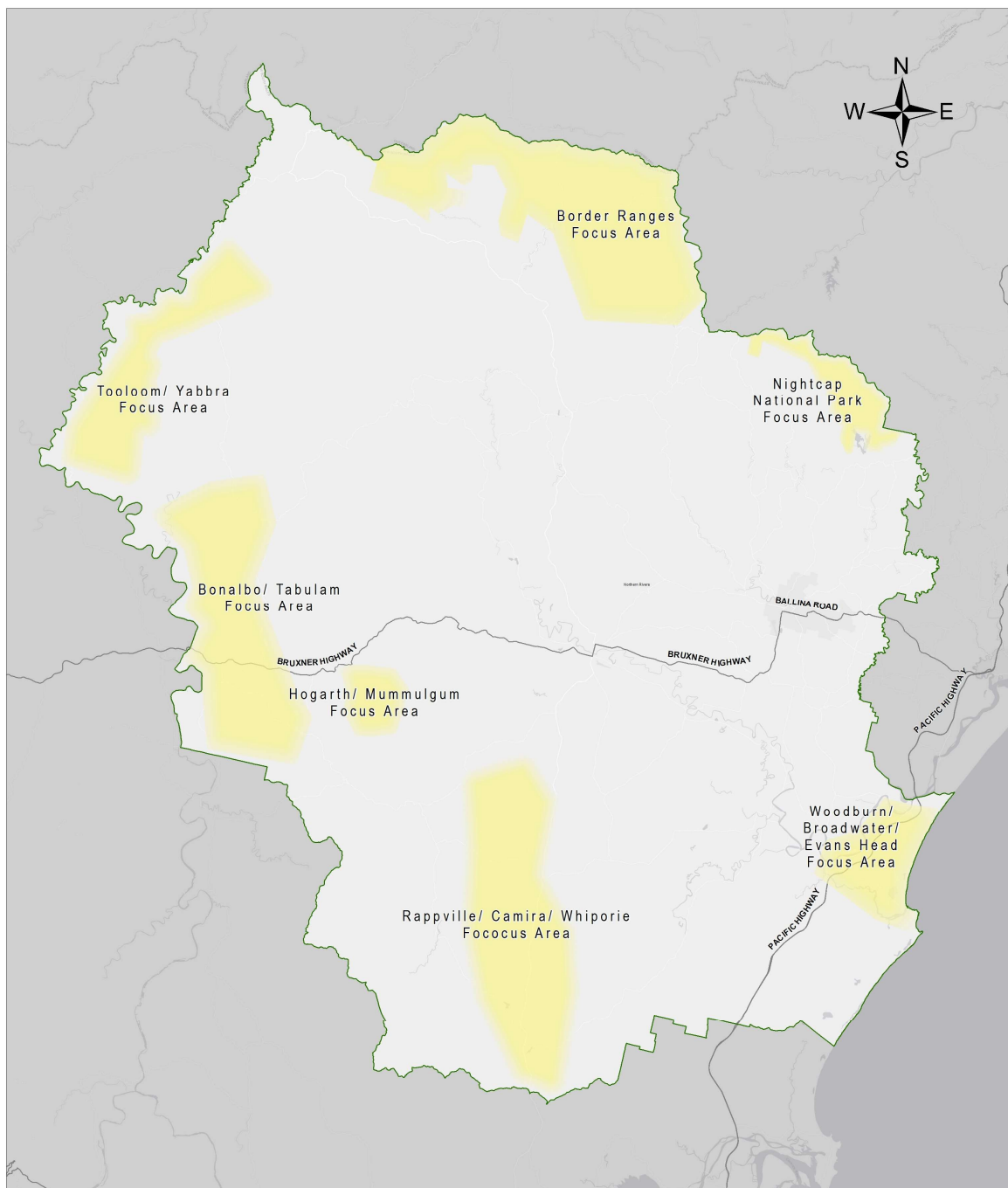
This BFRMP is supported by a number of appendices, including:

1. Focus Areas
2. Fuel Management Register (List)
3. Maps:
 - 3.1 Residential and Special Fire Protection Purpose Risk Current
 - 3.2 Economic Risk Current
 - 3.3 Aboriginal Predicted Sites Risk Current
 - 3.4 Environmental Risk Current
 - 3.5 Historic Heritage Risk Current
 - 3.6 Focus Areas and Fuel Management Register
4. Communication Strategy

Appendix 1

Focus Areas

FOCUS AREAS	
Bonalbo / Tabulam	Rappville / Camira / Whiporie
Border Ranges	Tooloom / Yabbra
Hogarth / Mummulgum	Woodburn / Broadwater / Evans Head
Nightcap National Park	



1.1 Bonalbo / Tabulam

Risk Profile

The Northern Rivers Bush Fire Management Committee (BFMC) has assessed the risk to residential, special fire protection (schools, childcare etc), economic, environmental, and cultural assets and has identified Bonalbo / Tabulam as a Focus Area.

The Focus Area is located in the Kyogle Local Government Area and borders with Tenterfield and Clarence Valley Local Government Areas. The area incorporates multiple localities including Lower Peacock, Bottle Creek, Lower Bottle Creek, Jacksons Flat, Sandilands, Deep Creek and the two townships of Bonalbo and Tabulam.

Bonalbo is a township of approximately 400 people. The town has a central school, multipurpose health facility, several shops and amenities. There are around 150 homes with a number of unoccupied dwellings, five churches and a tourist caravan park. Primary employment are in the fields of medical support, education and farming. Unemployment, low-income and people requiring assistance to travel are identified as the key social vulnerability factors in the area. English language is a strength in this community and is suitable for community messaging and engagement activities.

The village of Tabulam has approximately 60 residential dwellings, a primary school, early childcare centre, 3 churches, and several shops and the Tabulam community also extends to outlying farms and larger properties. The predominate demographic is rural people working in agriculture with a large proportion of indigenous residents. Challenges for community resilience in this location include a high demand of government housing, families with single parents and requirements for assistance to travel.

Emergency service resources in the area are NSW Rural Fire brigades located at Bonalbo, Old Bonalbo and Tabulam. There is a police station at Bonalbo and a Neighbourhood Safer Place, identified as a place of last resort during a bush fire emergency, at the Bonalbo community hall. Tabulam also has a police station and an SES unit as well as a Neighbourhood Safer Place at Court street. There are many essential communications assets in the Focus Area, predominately around the townships.

Economic assets within this Focus Area include extensive public and private sector timber plantations, both softwood and hardwood and are valued in excess of \$10 million. There are also several Blueberry farms to the north of Tabulam. These assets are all vulnerable to bush fire. Environmental assets include 33 species of threatened fauna and also includes portions of the Mt Pikapene and Woodenbong Areas of Regional Koala Significance (ARKS). There are 6 species of threatened flora, including 2 critically endangered species as well as habitat for 2 endangered aquatic species. There are 6 active "Saving Our Species" priority management sites, 20 Ha of wetlands and a high conservation value old growth forest listed on the State Heritage Register.

There are three Local Aboriginal Land Councils (LALC), the Jana Ngalee, Muli Mul and Jubullum, in the area, with 16 cultural sites recorded in the Aboriginal Heritage Information Management System (AHIMS), and it is likely that there are more sites that are not registered or listed. The

Western Bundjalung People hold Native Title for 2708 Ha. Also, of historical significance within the Focus Area are 29 sites of local heritage significance listed under the Kyogle Local Environmental Plan, and the Clarence River Road Bridge is listed as a significant heritage item on the NSW State Heritage Register.

Bonalbo has not been impacted by bush fire in recent times, however Tabulam experienced significant fires in 2018 and 2019. Fuel loads beyond the managed farming lands are mapped as 17-20 t/ha with pockets of fuel >24 t/ha in the north of the area, and continue to increase following substantial rainfall over recent seasons.

Bush fire fuel reduction and management play a key role in BFMC strategies and will be achieved with prescribed burning undertaken in Strategic Fire Advantage Zones and Ignition Management Zones, and mechanical treatments supporting the upkeep of Asset Protection Zones, Transport Corridor and Linear Fire Breaks. Enhanced fire access will be explored with fire trail maintenance and targeted operational response plans. Community Preparedness treatments will consider the social demographic factors and will aim to build community resilience with activities to promote risk awareness, preparation and planning for bush fires.

The key Bush Fire Risk Management Plan Objectives and Treatment Strategies for Bonalbo / Tabulam are listed in Table 1.

Table 1

BFMC OBJECTIVE	TREATMENT STRATEGY	REFERENCE
Community Preparedness	Community Engagement; Risk Awareness	NR.BT.RA.1.1
	Community Engagement; Planning	NR.BT.PL.1.2
	Community Engagement; Preparation	NR.BT.PR.1.3
	Community Engagement; Community Resilience	NR.BT.CR.1.4
	Community Engagement; Response	NR.BT.RP.1.5
Fuel Management	Asset Protection Zone(s)	NR.BT.AP.2.1
	Ignition Management Zone; prescribed burn	NR.BT.IM.2.2
	Strategic Fire Advantage Zone; prescribed burn	NR.BT.SF.2.3
	Fire Break; Linear	NR.BT.LF.2.5
	Fire Break; Transport Corridor	NR.BT.TF.2.6
Response	Operational Readiness Arrangements; addressed in BFMC Plan of Operations	NR.BT.OR.3.1
	Neighbourhood Safer Place; addressed in BFMC Plan of Operations	NR.BT.NS.3.2
	Fire Access or Fire Trail; addressed in BFMC FAFT Plan	NR.BT.FA.3.4

1.2 Border Ranges

Risk Profile

The Northern Rivers Bush Fire Management Committee (BFMC) has assessed the risk to residential, special fire protection (schools, health facilities, childcare etc), economic, environmental, and cultural assets and has identified the Border Ranges as a Focus Area.

The Focus Area is in the Kyogle Local Government Area and borders the Tweed Local Government area and state of Queensland. It encompasses many localities and has a mixture of private and public lands including the Border Ranges National Park. Many private land parcels have landowners who are absent or infrequently present with many parcels commonly used for grazing. The area is remote from major roads and infrastructure, with limited access and egress options. The areas natural beauty attracts tourists for farm stay or retreats and camping trips in the National Park.

The North Coast rail line transverses through the Focus area and is the only rail line for passenger and freight services between Sydney and Brisbane. The Line runs north from Casino and Kyogle passing through the heritage listed Cougal Spiral rail loop and border tunnel into Queensland. Emergency service resources in the area are NSW Rural Fire brigades located in the villages of Wiangaree and Grevillia.

Environmental assets are significant and it is the highest biodiversity area in NSW, including World Heritage listed rainforests and multiple flora and fauna sites identified as Assets of Intergenerational Significance (AIS). AIS sites can be any area of exceptional value – natural or cultural – that warrants special protection including dedicated management measures.

The Gondwana Rainforests of Australia, listed as World Heritage Areas (WHA), are within the Focus Area. It is a place where many plants and animals remain relatively unchanged from their ancestors in the fossil record and provides the principal habitat for many threatened species of plants and animals.

This location is home to the Githabul People, who have an Indigenous Land Use Agreement (ILUA) and Native Title agreements on the Border Ranges National Park, and throughout the Gondwana Rainforest WHA, there is an extensive range of Aboriginal and European cultural heritage. This heritage includes a diverse array of Aboriginal sites and evidence of extended occupation such as burial sites, marked trees and artefact scatters.

The treatments identified to protect the Border Ranges National Park and Gondwana Rainforests World Heritage area will be implemented in accordance with the objectives and strategies of the Bush Fire Risk Management Plan (BFRMP). These treatments will include a planned multi-year prescribed burning program undertaken in Land Management Zones and Strategic Fire Advantage Zones, incorporating strategic hazard reduction activities within the National Park and surrounding landscape to reduce bush fire risk to life, property and the environment.

Operational readiness arrangements will be coordinated through the Bush Fire Management Committee (BFMC), with established Fire Response Plans that provide for rapid initial attack of bush and lightning-ignited fires.

Community Preparedness strategies will be targeting absentee landowners and transient population to help develop awareness of risk. Operational readiness arrangements and Fire Response Plans have been identified.

The key Bush Fire Risk Management Plan Objectives and Treatment Strategies for Border Ranges are listed in Table 2.

Table 2

BFMC OBJECTIVE	TREATMENT STRATEGY	REFERENCE
Community Preparedness	Community Engagement; Risk Awareness	NR.BR.RA.1.1
Fuel Management	Strategic Fire Advantage Zone; prescribed burn	NR.BR.SF.2.3
	Land Management Zone; prescribed burn	NR.BR.LM.2.4
Response	Operational Readiness Arrangements; addressed in BFMC Plan of Operations	NR.BR.OR.3.1
	Neighbourhood Safer Place; addressed in BFMC Plan of Operations	NR.BR..NS.3.2
	Pre-Incident Plan; addressed in BFMC Plan of Operations	NR.BR.PI.3.3
	Fire Access or Fire Trail; addressed in BFMC FAFT Plan	NR.BR.FA.3.4

1.3 Hogarth / Mummulgum

Risk Profile

The Northern Rivers Bush Fire Management Committee (BFMC) has assessed the risk to residential, special fire protection (schools, health facilities, childcare etc), economic, environmental, and cultural assets and has identified Hogarth / Mummulgum as a Focus Area.

The Focus area sits across the Kyogle and Richmond Valley Local Government Areas and encompasses the localities of Hogarth Range, Upper Mongogarie and Mummulgum. The area has minimal infrastructure and is a rural area used for both grazing and orcharding. There are also portions of public lands in the Mallanganee National Park and the Cherry Tree State Forest. Emergency services in the area are limited to a NSW Rural Fire Brigade at Hogarth, with another at Mummulgum. There are essential communications towers within the Focus Area at Mallanganee Lookout near the Bruxner Highway.

The predominate demographic for the community in this Focus Area is rural people working in agriculture living on larger properties, far from main roads and main towns. English language is in the higher percentile and contributes to enhanced understanding of community messaging and engagement.

Environmental assets include 28 Threatened fauna species and 1 Threatened fish species that has been listed as Endangered. Much of the Focus Area is within the Mt Pikapene Area of Regional Koala Significance. There are two Threatened flora species including 1 Critically Endangered species and 5 Threatened ecological communities. There are 5 "Saving Our Species" strategic conservation sites in the area. The Mallanganee National Park is part of the Gondwana Rainforests of Australia World Heritage Area.

This area is home to the Western Bundjalung people and there are 5 known Aboriginal sites listed on the Aboriginal Heritage Information Management System (AHIMS) with potentially more that are not registered. The Mallanganee National Park has a joint Indigenous Land Use Agreement (ILUA) and Native Title with the Western Bundjalung people and encompasses a high conservation value old growth forest listed as a State Heritage item.

Vegetation types in this area include Dry and Wet Sclerophyll forests with some pockets of rainforest, and agricultural grazing lands. Fuel loads are varied from moderate in the agricultural areas to >24 t/ha in the forested areas. Bush fires have been recorded in this area in 2013, 2019 and 2025 and are historically a recurrent event.

To manage these risks, the BFMC has key strategies planned for this Focus Area which includes bush fire fuel reduction using prescribed burning in Land Management Zones and Strategic Fire Advantage Zones.

Operational readiness arrangements will be coordinated through the Bush Fire Management Committee (BFMC), with established Fire Response Plans that provide for rapid initial attack of bush and lightning-ignited fires.

Community Preparedness treatments will consider the social demographic factors and will aim to focus on enhancing community awareness, planning and preparation for bush fires with targeted engagement activities.

The key Bush Fire Risk Management Plan Objectives and Treatment Strategies for Hogarth / Mummulgum are listed in Table 3.

Table 3

BFMC OBJECTIVE	TREATMENT STRATEGY	REFERENCE
Community Preparedness	Community Engagement; Risk Awareness	NR.HM.RA.1.1
	Community Engagement; Planning	NR.HM.PL.1.2
	Community Engagement; Preparation	NR.HM.PR.1.3
Fuel Management	Strategic Fire Advantage Zone; prescribed burn	NR.HM.SF.2.3
	Land Management Zone; prescribed burn	NR.HM.LM.2.4
Response	Operational Readiness Arrangements; addressed in BFMC Plan of Operations	NR.HM.OR.3.1
	Neighbourhood Safer Place; addressed in BFMC Plan of Operations	NR.HM.NS.3.2
	Pre-Incident Plan; addressed in BFMC Plan of Operations	NR.HM.PI.3.3
	Fire Access or Fire Trail; addressed in BFMC FAFT Plan	NR.HM.FA.3.4

1.4 Nightcap National Park

Risk Profile

The Northern Rivers Bush Fire Committee has assessed the risk to human settlement, environmental and cultural assets and has identified the significant Flora and Fauna sites and Gondwana Rainforest World Heritage Areas within the Nightcap National Park as a Focus Area.

The Focus area is located east of Nimbin within the Lismore Local Government Area and encompasses the Nightcap National Park and Whian Whian State Conservation Area.

Assets of Intergenerational Species (AIS) - The 2019/20 NSW Bush fire Inquiry recognised the need to identify the most important natural and cultural assets within national park estate, so that special provision can be made for their conservation. Multiple flora and fauna sites within the Focus Area warrant special protection including dedicated management measures as AIS sites.

World Heritage Areas - The Gondwana Rainforests of Australia are a serial property comprising of the major remaining areas of rainforest in southeast Queensland and northeast New South Wales. It captures a diverse array of rainforest types and is a place where many plants and animals remain relatively unchanged from their ancestors in the fossil record. The Gondwana Rainforests also provides the principal habitat for many threatened species of plants and animals with an exceptional number located within the Focus area, including Nightcap Oak which is a species that only exists in this part of the world.

This area is home to the Widjabul Wia-bal People who have and Indigenous Land Use Agreement (ILUA) and Native Title over the Nightcap National Park and Whian Whian State Conservation Area. Throughout the Gondwana Rainforest World Heritage Area there is also a range of Aboriginal and European cultural heritage. This heritage includes a diverse array of Aboriginal sites and evidence of extended occupation such as burial sites, marked trees and artefact scatters.

In addition to the environmental assets identified, the Mt Nardi communications tower is situated in the Focus Area and provides critical strategic communications for the east coast. The Rocky Creek Dam is a catchment and provides bulk water storage for Lismore. Emergency service resources in the area are NSW Rural Fire brigades located at Nimbin and The Channon, with a police station and hospital also at Nimbin. A Neighbourhood Safer Place identified as a place of last resort during a bush fire emergency is located in the open space around Sibley Street Nimbin.

The treatments identified to protect the protect the Nightcap National Park Gondwana Rainforests World Heritage area will be implemented in accordance with the objectives and strategies of the Bush Fire Risk Management Plan (BFRMP). These treatments will include a planned multi-year prescribed burning program undertaken in Land Management Zones, incorporating strategic hazard reduction activities within the National Park and surrounding landscape to reduce bush fire risk to life, property and the environment.

Operational readiness arrangements will be coordinated through the Bush Fire Management Committee (BFMC), with established Fire Response Plans that provide for rapid initial attack of bush and lightning-ignited fires.

The key Bush Fire Risk Management Plan Objectives and Treatment Strategies for Nightcap National Park are listed in Table 4.

Table 4		
BFMC OBJECTIVE	TREATMENT STRATEGY	REFERENCE
Community Preparedness	Community Engagement; Response	NR.NP.RP.1.1
Fuel Management	Asset Protection Zone(s)	NR.NP.AP.2.1
	Land Management Zone; prescribed burn	NR.NP.LM.2.4
Response	Operational Readiness Arrangements; addressed in BFMC Plan of Operations	NR.NP.OR.3.1
	Pre-Incident Plan; addressed in BFMC Plan of Operations	NR.NP.PI.3.3
	Fire Access or Fire Trail; addressed in BFMC FAFT Plan	NR.NP.FA.3.4
Ignition Prevention	Access Restriction; addressed in BFMC Ignition Prevention Plan	NR.NP.AR.4.1
	Patrol; addressed in BFMC Ignition Prevention Plan	NR.NP.PT.4.2

1.5 Rappville / Camira / Whiporie

Risk Profile

The Northern Rivers Bush Fire Management Committee (BFMC) has assessed the risk to residential, special fire protection (schools and childcare), economic, environmental, and cultural assets and has identified the combined localities of Rappville, Camira and Whiporie as a Focus Area.

The Focus Area is located along Summerland way approximately 30 kilometres south of Casino and extends from Rappville south to Whiporie within the Richmond Valley Local Government Area. Rappville is the largest residential community with a school, childcare centre, church, post office and community hall. Whiporie has a general store and community hall, Camira is scattered residential dwellings. The 2021 census records 145 people and 50 houses in Rappville, 114 people and 31 houses in Whiporie and 35 people and 9 houses in Camira. The North Coast Railway from Sydney to Brisbane passes through the entire length of the Focus Area.

From a social perspective, the predominate demographic in the population is rural people working in agriculture and isolated from main towns. Key drivers for social vulnerability in the area include a portion of the population requiring assistance to travel and low employment opportunities. Community messaging and engagement should consider both indigenous and non-indigenous members of the community. Emergency service resources include NSW Rural Fire Brigades located at Whiporie and Rappville, with brigades also located in the surrounding areas of Ellangowan and Bungawalbyn. There is a Neighbourhood Safer Place (NSP) at Whiporie community hall identified as a place of last resort during a bush fire emergency.

Critical public and private plantation forests, both softwood and hardwood make up much of the Focus Area. Many of these plantations were destroyed in 2019 fires and have since been replanted and need to be protected from high intensity bush fire. There are limited managed agricultural lands interfacing Rappville and Whiporie, whilst Camira interfaces directly to forest plantation. There are limited transport corridors for access and egress from each inhabited locality.

In addition to plantations, there are natural environmental assets found within the Focus Area that include 40 threatened fauna species (Including 1 Critically Endangered species) and 1 endangered population. The Purple Spotted Gudgeon is native to the area and is listed as Endangered and the locality is mapped as an Area of Regional Koal Significance (ARKS) . There are 10 threatened flora species and 5 threatened ecological communities with 5 strategic “Saving Our Species” conservation sites identified and 1 Flora Reserve. There is also a high conservation old growth forest listed as a State Heritage asset.

Cultural assets include 4 known Aboriginal sites listed on the Aboriginal Heritage Information Management System (AHIMS) with a potential for more sites that are not registered, and 7 Historic Heritage items listed under the Local Environmental Plan.

Significant fires in 2019 impacted much of the Focus Area, destroying properties as well as depleting forest stocks. Fuels are starting to recover and currently most of the area is mapped at a 9-12 t/ha and some pockets at >17 t/ha with rapid growth following extensive rainfall.

To manage these risks the BFMC has planned a suite of fire management strategies including fuel reduction activities and community preparedness activities. Prescribed burning will be undertaken in Strategic Fire Advantage Zones and Ignition Management Zones with mechanical works supporting the creation and maintenance of Asset Protection Zones and Linear Fire Breaks.

Community Preparedness treatments will consider the social demographic factors and will aim to focus on enhancing community resilience with engagement programmes to raise community risk awareness for bush fires.

The key Bush Fire Risk Management Plan Objectives and Treatment Strategies for Rappville / Camira / Whiporie are listed in Table 5.

Table 5

BFMC OBJECTIVE	TREATMENT STRATEGY	REFERENCE
Community Preparedness	Community Engagement; Risk Awareness	NR.RC.RA.1.1
	Community Engagement; Community Resilience	NR.RC.CR.1.4
Fuel Management	Asset Protection Zone(s)	NR.RC.AP.2.1
	Ignition Management Zone; prescribed burn	NR.RC.IM.2.2
	Strategic Fire Advantage Zone; prescribed burn	NR.RC.SF.2.3
	Fire Break; Linear	NR.RC.LF.2.5

1.6 Tooloom / Yabbra

Risk Profile

The Northern Rivers Bush Fire Management Committee (BFMC) has assessed the risk to human settlement, natural, economic and cultural assets and has identified Tooloom and Yabbra as a Focus Area.

The focus area is located within the Kyogle Local Government Area to the east and south of Urbenville. It encompasses the localities of Yabbra, Toloom, Boomi Creek and Paddys Flat. Yabbra State Forest and Yabbra National Park encompass most of the focus area with both National Park and State Forest hosting significant economic and environmental assets at risk from bush fire.

There are minimal human settlement assets within this area, however, there is a 33kV electrical transmission line traversing the Focus Area to supply the Urbenville locality. The only main access and egress to the area is via the Clarence Way which is a sealed single carriageway country road. Emergency service resources in the area are NSW Rural Fire brigade located in the village of Old Bonalbo.

The Focus Area includes a concentration of public and private timber plantations with an estimated economic value of \$20 million. The plantations within the Focus Area are vulnerable to a high intensity bush fire. Risk mitigation in this area will also benefit the World Heritage listed Subtropical Rainforest within the Yabbra National Park.

Environmental assets across this focus area include 37 species of Threatened Fauna, including 1 Critically Endangered species. The area also includes a site that protects Mountain Frogs that are a Threatened species identified as an Asset of Intergenerational Significance (AIS) and the site also overlaps the Woodenbong Area of Regional Koala Significance (ARKS). There are 7 species of Threatened flora including 3 critically endangered, and approximately 5290 Ha of Threatened Ecological Communities and 3 Ha of Wetlands. There are 9 active "Saving Our Species" Priority Management Sites for 7 protected species and approximately 200 Ha of land managed under private property conservation agreement. This locality also hosts the highest diversity of Macropods in Australia. The treatments identified to protect environmental assets as part of the NPWS Richmond River Area plan of management and will include strategic prescribed burning within the National Park. Early detection of fires will be enhanced with the installation of a camera on Haystack Mountain.

Cultural assets known within the Focus Area include 1 Aboriginal Place and 7 sites listed on the Aboriginal Heritage Information Management System (AHIMS) and there are likely to be more that are not listed or registered. The Focus Area is within the Muli Muli Local Aboriginal Land Council (LALC) area and the Githabul People hold Native Title in this region. There is 1 item of State Heritage Significance listed on the NSW State Heritage Register and 1 Item of Heritage significance listed on the NSW NPWS s170 Heritage and Conservation Register. The Kyogle Local Environmental Plan also lists 1 site of local significance within the focus area.

Operational readiness arrangements will be coordinated through the Bush Fire Management Committee (BFMC), with established Fire Response Plans that provide for rapid initial attack of bush and lightning-ignited fires.

To manage these risks the BFMC has planned strategies to include fuel management with prescribed low-intensity burning in Land Management Zones and Strategic Fire Advantage Zones, with mechanical works supporting the construction and maintenance of strategic Linear Fire Breaks and Asset Protection Zones around critical infrastructure. The Fire Access & Fire Trail plan for Northern Rivers includes maintaining several Fire trails within this Focus Area and the BFMC Ignition Prevention Plan also includes actions specific to this critical landscape.

The key Bush Fire Risk Management Plan Objectives and Treatment Strategies for Tooloom / Yabba are listed in Table 6.

Table 6

BFMC OBJECTIVE	TREATMENT STRATEGY	REFERENCE
Fuel Management	Asset Protection Zone(s)	NR.TY.AP.2.1
	Strategic Fire Advantage Zone; prescribed burn	NR.TY.SF.2.3
	Land Management Zone; prescribed burn	NR.TY.LM.2.4
	Fire Break; Linear	NR.TY.LF.2.5
Response	Operational Readiness Arrangements; addressed in BFMC Plan of Operations	NR.TY.OR.3.1
	Pre-Incident Plan; addressed in BFMC Plan of Operations	NR.TY.PI.3.2
	Fire Access or Fire Trail; addressed in BFMC FAFT Plan	NR.TY.FA.3.4
Ignition Prevention	Patrol; addressed in BFMC Ignition Prevention Plan	NR.TY.PT.4.5

1.7 Woodburn / Broadwater / Evans Head

Risk Profile

The Northern Rivers Bush Fire Management Committee (BFMC) has assessed the risk to residential, special fire protection (schools, health facilities, childcare etc), economic, environmental, and cultural assets and has identified Woodburn / Broadwater / Evans Head as a Focus Area.

The Focus area includes the coastal river suburbs of Broadwater, Rileys Hill, Woodburn, Doonbah and Evans Head within the Richmond Valley Local Government Area. There is good access and egress with numerous local roads connecting to the M1 motorway which passes through the area. Residential density is concentrated in the Evans Head and Woodburn areas; there is also a high density “over 50’s” lifestyle village and scattered rural homes on larger bushland blocks.

There are multiple communications towers and other critical infrastructure including waste treatment works, a sugar mill complete with an electrical generation plant that also provides power to the main grid. A large portion of the Focus Area is natural bushland and to the west of the motorway is developed agricultural land primarily used for sugar production.

The population demographic varies greatly across the area and ranges from affluent retirees living in high value housing, to younger traditional families and single parents with school age children. There are rural people working in agriculture and younger blue-collar workers renting away from the town centres on lower incomes. There are a number of unoccupied dwellings and challenges associated with low incomes contributing to social vulnerability and community resilience.

Historically, bush fires have affected the area around Evans Head and Broadwater National Park with significant fires occurring in 2016, 2020 and 2023. Emergency services across the Focus Area include a NSW Rural Fire Brigade at Woodburn, a Fire and Rescue station at Evans Head, and SES units located at Broadwater and Woodburn. There is a Neighbourhood Safer Place as a place of last resort during a bush fire emergency at Evans Head and Broadwater.

The Broadwater National Park and some portions of Bundjalung National Park are located within this Focus Area. Environmental assets include 70 fauna species that are listed as Threatened and 2 that are Critically Endangered with 22 marine/migratory species in this habitat with 1 native fish species listed as Endangered. There are 15 Threatened flora species and 11 Threatened ecological communities and the Coastal Wetland vegetation has around 52,000 Hectares identified as strategic sites for landscape species protection across 9 “Saving Our Species” locations. There is an “old growth” forest listed as a State Heritage item.

The area is home to the Bandjalang People who have been granted Native Title. From a cultural and heritage perspective, there are 21 known Aboriginal sites listed on the Aboriginal Heritage Information Management System (AHIMS) and potential for more that have not been listed or registered. The Evans Head Aerodrome is listed as Heritage item on Commonwealth, State and

Local Environmental plans (LEP) and there are 29 heritage items in total listed on the LEP within the Focus Area.

To manage these risks the BFMC has identified a variety of treatments for this Focus Area including bush fire fuel reduction using prescribed burning in Strategic Fire Advantage Zones and Land Management Zones with mechanical works supporting the maintenance of Asset Protection Zones.

Community Preparedness treatments will consider the social demographic factors and will aim to raise awareness to bush fire risk and help prepare and plan for bush fire. Additionally, the BFMC will review fire access and fire trails across this Focus Area.

Operational readiness arrangements will be coordinated through the Bush Fire Management Committee (BFMC), with established Fire Response Plans that provide for rapid initial attack of bush and lightning-ignited fires.

The key Bush Fire Risk Management Plan Objectives and Treatment Strategies for Woodburn / Broadwater / Evans Head are listed in Table 7

Table 7

BFMC OBJECTIVE	TREATMENT STRATEGY	REFERENCE
Community Preparedness	Community Engagement; Risk Awareness	NR.WB.RA.1.1
	Community Engagement; Planning	NR.WB.PL.1.2
	Community Engagement; Preparation	NR.WB.PR.1.3
Fuel Management	Asset Protection Zone(s)	NR.WB.AP.2.1
	Strategic Fire Advantage Zone; prescribed burn	NR.WB.SF.2.3
	Land Management Zone; prescribed burn	NR.WB.LM.2.4
Response	Operational Readiness Arrangements; addressed in BFMC Plan of Operations	NR.WB.NS.3.1
	Neighbourhood Safer Place; addressed in BFMC Plan of Operations	NR.WB.NS.3.2
	Pre-Incident Plan; addressed in BFMC Plan of Operations	NR.WB.NS.3.3
	Fire Access or Fire Trail; addressed in BFMC FAFT Plan	NR.WB.FA.3.4

Appendix 2

Fuel Management Register

Table 2.1 Asset Protection Zones				
ID	Name	Focus Area	Priority	Responsible Agency
AP.1	Bonalbo MPS APZ	Bonalbo / Tabulam	1	NSW Rural Fire Service
AP.2	Charles Street APZ	Bonalbo / Tabulam	1	Kyogle Council
AP.3	Council Shed APZ	Bonalbo / Tabulam	1	Crown Lands
AP.4	Gill St APZ	Bonalbo / Tabulam	1	NSW Rural Fire Service
AP.5	Tabualm School Fence APZ	Bonalbo / Tabulam	1	Crown Lands
AP.6	Woodenbong Rd APZ	Bonalbo / Tabulam	1	Crown Lands
AP.7	RICH APZ Minyon Grass	Nightcap National Park	1	National Parks and Wildlife Service
AP.8	Gibberagee Complex APZ 2025	Rappville / Camira / Whiporie	1	Forestry Corporation of NSW
AP.9	Whiporie APZ 2025	Rappville / Camira / Whiporie	1	Forestry Corporation of NSW
AP.10	Tooloom Tower APZ 2025	Tooloom / Yabbra	1	Forestry Corporation of NSW
AP.11	Evans Head - Carrabeen Ct APZ	Woodburn / Broadwater / Evans Head	1	Crown Lands
AP.12	Evans Head - Heath St APZ	Woodburn / Broadwater / Evans Head	1	Crown Lands
AP.13	Evans Head - Terrace St APZ	Woodburn / Broadwater / Evans Head	1	Crown Lands
AP.14	Evans Head - Woodburn St APZ	Woodburn / Broadwater / Evans Head	1	Crown Lands
AP.15	RICH APZ Baxters	Woodburn / Broadwater / Evans Head	1	National Parks and Wildlife Service
AP.16	RICH Blue Pools APZ	Woodburn / Broadwater / Evans Head	1	National Parks and Wildlife Service
AP.17	RICH Evans APZ 1 & 2	Woodburn / Broadwater / Evans Head	1	National Parks and Wildlife Service
AP.18	RICH Headland Houses APZ	Woodburn / Broadwater / Evans Head	1	National Parks and Wildlife Service
AP.19	RICH Henderson APZ	Woodburn / Broadwater / Evans Head	1	National Parks and Wildlife Service
AP.20	RICH Koinonia HR	Woodburn / Broadwater / Evans Head	1	National Parks and Wildlife Service
AP.21	RICH North APZ	Woodburn / Broadwater / Evans Head	1	National Parks and Wildlife Service
AP.22	RICH Reagan APZ	Woodburn / Broadwater / Evans Head	1	National Parks and Wildlife Service
AP.23	RICH Rileys Hill APZ	Woodburn / Broadwater / Evans Head	1	National Parks and Wildlife Service
AP.24	RICH Southern APZ	Woodburn / Broadwater / Evans Head	1	National Parks and Wildlife Service
AP.25	RICH Wallum APZ	Woodburn / Broadwater / Evans Head	1	National Parks and Wildlife Service

ID	Name	Focus Area	Priority	Responsible Agency
AP.26	Rileys Hill - Hills Rd APZ	Woodburn / Broadwater / Evans Head	1	Crown Lands
AP.27	Rileys Hill - Hills Rd North APZ	Woodburn / Broadwater / Evans Head	1	Crown Lands
AP.28	South Evans Head - Anson Ave APZ	Woodburn / Broadwater / Evans Head	1	Crown Lands
AP.29	South Evans Head - Boomerang St APZ	Woodburn / Broadwater / Evans Head	1	Crown Lands
AP.30	South Evans Head - Bundjalung Rd APZ	Woodburn / Broadwater / Evans Head	1	Crown Lands
AP.31	South Evans Head - Chinamans Beach Rd APZ	Woodburn / Broadwater / Evans Head	1	Crown Lands
AP.32	South Evans Head - Evans Rd APZ	Woodburn / Broadwater / Evans Head	1	Crown Lands
AP.33	Coraki - Donaldson St APZ		2	Crown Lands
AP.34	Coraki - Thomas Cres APZ		2	Crown Lands
AP.35	Donaldson Tower APZ 2025		2	Forestry Corporation of NSW
AP.36	Gibberagee Firetower SFAZ 2025		2	Forestry Corporation of NSW
AP.37	RICH APZ Tucki day use		2	National Parks and Wildlife Service
AP.38	RICH Cambridge Plateau APZ		2	National Parks and Wildlife Service
AP.39	RICH D Quad APZ		2	National Parks and Wildlife Service
AP.40	RICH Fredericks APZ		2	National Parks and Wildlife Service
AP.41	RICH Haystack APZ		2	National Parks and Wildlife Service
AP.42	RICH Master Quad APZ		2	National Parks and Wildlife Service
AP.43	RICH Mount Babyl APZ		2	National Parks and Wildlife Service
AP.44	RICH Peacock Creek Campground APZ		2	National Parks and Wildlife Service
AP.45	RICH Telstra Mobile Phone Tower APZ		2	National Parks and Wildlife Service
AP.46	RICH Toonumbar Tower APZ		2	National Parks and Wildlife Service
AP.47	RICH Wilson APZ		2	National Parks and Wildlife Service
AP.48	Toonumbar Tower APZ		2	National Parks and Wildlife Service

Table 2.2 Prescribed Burns/ Fire Breaks/ Grazing					
ID	Name	Strategy*	Focus Area	Priority	Responsible Agency
IM.49	Jubal IM 1	IMZ	Bonalbo / Tabulam	1	NSW Rural Fire Service
IM.50	Jubal IM 2	IMZ	Bonalbo / Tabulam	1	NSW Rural Fire Service
IM.51	Mary's TSR IM	IMZ	Bonalbo / Tabulam	1	NSW Rural Fire Service
IM.52	Braemar Shortcut Rd 2025	IMZ	Rappville / Camira / Whiporie	1	Forestry Corporation of NSW
IM.53	Braemar Stumpys Rd 2027	IMZ	Rappville / Camira / Whiporie	1	Forestry Corporation of NSW
IM.54	Braemar Summerland Way 2026	IMZ	Rappville / Camira / Whiporie	1	Forestry Corporation of NSW
IM.55	Braemar Summerland Way IMZ 2026	IMZ	Rappville / Camira / Whiporie	1	Forestry Corporation of NSW
IM.56	Braemar Townsend Rd 2027	IMZ	Rappville / Camira / Whiporie	1	Forestry Corporation of NSW
IM.57	Muli Road Northeast	IMZ		2	Kyogle Council
IM.58	Muli Road South	IMZ		2	Kyogle Council
LF.59	Bonalbo Complex Central LFB 2025	LFB	Bonalbo / Tabulam	1	Forestry Corporation of NSW
LF.60	Bonalbo Complex North LFB 2025	LFB	Bonalbo / Tabulam	1	Forestry Corporation of NSW
LF.61	Bonalbo Complex South LFB 2025	LFB	Bonalbo / Tabulam	1	Forestry Corporation of NSW
LF.62	Charles St LFB	LFB	Bonalbo / Tabulam	1	Kyogle Council
LF.63	Johnson St LFB	LFB	Bonalbo / Tabulam	1	Kyogle Council
LF.64	Banyabba Complex Nth LFB 2025	LFB	Rappville / Camira / Whiporie	1	Forestry Corporation of NSW
LF.65	Gibberagee Complex LFB 2025	LFB	Rappville / Camira / Whiporie	1	Forestry Corporation of NSW
LF.66	Whiporie Complex LFB 2025	LFB	Rappville / Camira / Whiporie	1	Forestry Corporation of NSW
LF.67	Yabbra Complex Gooroobee 2025	LFB	Tooloom / Yabbra	1	Forestry Corporation of NSW
LF.68	Yabbra Complex HWD Nth 2025	LFB	Tooloom / Yabbra	1	Forestry Corporation of NSW
LF.69	Yabbra Complex HWD Sth LFB 2025	LFB	Tooloom / Yabbra	1	Forestry Corporation of NSW
LF.70	Yabbra Complex Iversons LFB 2025	LFB	Tooloom / Yabbra	1	Forestry Corporation of NSW
LF.71	Yabbra Complex Smiths 2025	LFB	Tooloom / Yabbra	1	Forestry Corporation of NSW
LM.72	Creegans HR	LMZ	Border Ranges	1	National Parks and Wildlife Service
LM.73	Dandys Grass HR	LMZ	Border Ranges	1	National Parks and Wildlife Service
LM.74	Green Pigeon HR	LMZ	Border Ranges	1	National Parks and Wildlife Service
LM.75	Little ODonnell HR	LMZ	Border Ranges	1	National Parks and Wildlife Service
LM.76	Long Creek HR	LMZ	Border Ranges	1	National Parks and Wildlife Service

ID	Name	Strategy*	Focus Area	Priority	Responsible Agency
LM.77	Mahoneys Spur HR	LMZ	Border Ranges	1	National Parks and Wildlife Service
LM.78	Mt Gippsl HR	LMZ	Border Ranges	1	National Parks and Wildlife Service
LM.79	Murray Property EBB PB	LMZ	Border Ranges	1	National Parks and Wildlife Service
LM.80	Tayling Ridge HR	LMZ	Border Ranges	1	National Parks and Wildlife Service
LM.81	Terrace Creek HR	LMZ	Border Ranges	1	National Parks and Wildlife Service
LM.82	Wild Cattle Grass HR	LMZ	Border Ranges	1	National Parks and Wildlife Service
LM.83	Bulmers HR	LMZ	Hogarth / Mummulgum	1	National Parks and Wildlife Service
LM.84	Minyon HR	LMZ	Nightcap National Park	1	National Parks and Wildlife Service
LM.85	Quandong HR	LMZ	Nightcap National Park	1	National Parks and Wildlife Service
LM.86	Quirks HR	LMZ	Nightcap National Park	1	National Parks and Wildlife Service
LM.87	Sphinx Rock HR	LMZ	Nightcap National Park	1	National Parks and Wildlife Service
LM.88	Toonumbar West HR	LMZ	Tooloom / Yabbra	1	National Parks and Wildlife Service
LM.89	Bessies HR	LMZ	Woodburn / Broadwater / Evans Head	1	National Parks and Wildlife Service
LM.90	Goanna Headland HR	LMZ	Woodburn / Broadwater / Evans Head	1	National Parks and Wildlife Service
LM.91	Haynes HR	LMZ	Woodburn / Broadwater / Evans Head	1	National Parks and Wildlife Service
LM.92	North HR	LMZ	Woodburn / Broadwater / Evans Head	1	National Parks and Wildlife Service
LM.93	North Range HR	LMZ	Woodburn / Broadwater / Evans Head	1	National Parks and Wildlife Service
LM.94	Olive Gap HR	LMZ	Woodburn / Broadwater / Evans Head	1	National Parks and Wildlife Service
LM.95	Rileys HR	LMZ	Woodburn / Broadwater / Evans Head	1	National Parks and Wildlife Service
LM.96	Bettong HR	LMZ		2	National Parks and Wildlife Service
LM.97	Castle East HR	LMZ		2	National Parks and Wildlife Service
LM.98	Castle West HR	LMZ		2	National Parks and Wildlife Service
LM.99	Finneys HR	LMZ		2	National Parks and Wildlife Service
LM.100	Grahams HR	LMZ		2	National Parks and Wildlife Service

ID	Name	Strategy*	Focus Area	Priority	Responsible Agency
LM.101	Mills HR	LMZ		2	National Parks and Wildlife Service
LM.102	Mongogarrie HR	LMZ		2	National Parks and Wildlife Service
LM.103	Muckleewee Mtn HR	LMZ		2	National Parks and Wildlife Service
LM.104	Murray Scrub HR	LMZ		2	National Parks and Wildlife Service
LM.105	O'Donnell HR	LMZ		2	National Parks and Wildlife Service
LM.106	Simpkins HR	LMZ		2	National Parks and Wildlife Service
LM.107	Spectre HR	LMZ		2	National Parks and Wildlife Service
LM.108	Steel Box East HR	LMZ		2	National Parks and Wildlife Service
LM.109	Tucki north HR	LMZ		2	National Parks and Wildlife Service
LM.110	Western Boundary HR	LMZ		2	National Parks and Wildlife Service
SF.111	Mount Lindesay HR	SFAZ	Border Ranges	1	National Parks and Wildlife Service
SF.112	Richmond Gap HR	SFAZ	Border Ranges	1	National Parks and Wildlife Service
SF.113	Bonalbo MPS SFAZ	SFAZ	Bonalbo / Tabulam	1	Crown Lands
SF.114	Bonalbo Reservoir 1 SFAZ	SFAZ	Bonalbo / Tabulam	1	Crown Lands
SF.115	Bonalbo Reservoir 2 SFAZ	SFAZ	Bonalbo / Tabulam	1	Crown Lands
SF.116	Carey St SFAZ	SFAZ	Bonalbo / Tabulam	1	Crown Lands
SF.117	Flat Camp SFAZ	SFAZ	Bonalbo / Tabulam	1	Ngullingah Jugun Aboriginal Corporation
SF.118	Golf Club SFAZ	SFAZ	Bonalbo / Tabulam	1	Ngullingah Jugun Aboriginal Corporation
SF.119	Harry Mundine St SFAZ	SFAZ	Bonalbo / Tabulam	1	Crown Lands
SF.120	Hoare St SFAZ	SFAZ	Bonalbo / Tabulam	1	Ngullingah Jugun Aboriginal Corporation
SF.121	Jubal Central	SFAZ	Bonalbo / Tabulam	1	NSW Rural Fire Service
SF.122	Jubal SF 1	SFAZ	Bonalbo / Tabulam	1	NSW Rural Fire Service
SF.123	Jubal SF 2	SFAZ	Bonalbo / Tabulam	1	NSW Rural Fire Service
SF.124	Jubal SF 3	SFAZ	Bonalbo / Tabulam	1	NSW Rural Fire Service
SF.125	Love Property SFAZ	SFAZ	Bonalbo / Tabulam	1	NSW Rural Fire Service
SF.126	Private Plantation 1	SFAZ	Bonalbo / Tabulam	1	NSW Rural Fire Service
SF.127	Private Plantation 2	SFAZ	Bonalbo / Tabulam	1	NSW Rural Fire Service

ID	Name	Strategy*	Focus Area	Priority	Responsible Agency
SF.128	Sugarloaf SFAZ 2025	SFAZ	Bonalbo / Tabulam	1	Forestry Corporation of NSW
SF.129	Tabulam School SFAZ	SFAZ	Bonalbo / Tabulam	1	NSW Rural Fire Service
SF.130	Tabulam South SFAZ	SFAZ	Bonalbo / Tabulam	1	NSW Rural Fire Service
SF.131	Tabulam TSR 1 SFAZ	SFAZ	Bonalbo / Tabulam	1	Local Land Services
SF.132	Tabulam TSR 2	SFAZ	Bonalbo / Tabulam	1	Local Land Services
SF.133	Tabulam TSR 3	SFAZ	Bonalbo / Tabulam	1	Local Land Services
SF.134	Turtle Point SFAZ	SFAZ	Bonalbo / Tabulam	1	NSW Rural Fire Service
SF.135	Woodworths Rd SFAZ	SFAZ	Bonalbo / Tabulam	1	Crown Lands
SF.136	Pennefathers east HR	SFAZ	Hogarth / Mummulgum	1	National Parks and Wildlife Service
SF.137	Banyabba SFAZ 2027	SFAZ	Rappville / Camira / Whiporie	1	Forestry Corporation of NSW
SF.138	Boots SFAZ 2026	SFAZ	Rappville / Camira / Whiporie	1	Forestry Corporation of NSW
SF.139	Braemar Park SFAZ 2026	SFAZ	Rappville / Camira / Whiporie	1	Forestry Corporation of NSW
SF.140	Braemar Rutleys Rd SFAZ 2026	SFAZ	Rappville / Camira / Whiporie	1	Forestry Corporation of NSW
SF.141	Camira Dam SFAZ 2029	SFAZ	Rappville / Camira / Whiporie	1	Forestry Corporation of NSW
SF.142	Camira DSC Rd SFAZ 2028	SFAZ	Rappville / Camira / Whiporie	1	Forestry Corporation of NSW
SF.143	Camira Village SFAZ 2026	SFAZ	Rappville / Camira / Whiporie	1	Forestry Corporation of NSW
SF.144	Carwong Nrth SFAZ 2027	SFAZ	Rappville / Camira / Whiporie	1	Forestry Corporation of NSW
SF.145	Carwong Sth SFAZ 2029	SFAZ	Rappville / Camira / Whiporie	1	Forestry Corporation of NSW
SF.146	Clearfield Rd SFAZ 2029	SFAZ	Rappville / Camira / Whiporie	1	Forestry Corporation of NSW
SF.147	Ellangowan Crouches Rd SFAZ 2027	SFAZ	Rappville / Camira / Whiporie	1	Forestry Corporation of NSW
SF.148	Ellangowan Poulsens Rd SFAZ 2028	SFAZ	Rappville / Camira / Whiporie	1	Forestry Corporation of NSW
SF.149	Harpers SFAZ 2029	SFAZ	Rappville / Camira / Whiporie	1	Forestry Corporation of NSW
SF.150	Royal Camp SFAZ 2027	SFAZ	Rappville / Camira / Whiporie	1	Forestry Corporation of NSW
SF.151	Haystack HR	SFAZ	Tooloom / Yabbra	1	National Parks and Wildlife Service
SF.152	Crash HR	SFAZ	Woodburn / Broadwater / Evans Head	1	National Parks and Wildlife Service
SF.153	Doonbah HR	SFAZ	Woodburn / Broadwater / Evans Head	1	National Parks and Wildlife Service
SF.154	Highway HR	SFAZ	Woodburn / Broadwater / Evans Head	1	National Parks and Wildlife Service

ID	Name	Strategy*	Focus Area	Priority	Responsible Agency
SF.155	McDonalds HR	SFAZ	Woodburn / Broadwater / Evans Head	1	National Parks and Wildlife Service
SF.156	Powerline HR	SFAZ	Woodburn / Broadwater / Evans Head	1	National Parks and Wildlife Service
SF.157	Basin HR	SFAZ		2	National Parks and Wildlife Service
SF.158	Donaldson SFAZ 2026	SFAZ		2	Forestry Corporation of NSW
SF.159	Macca HR	SFAZ		2	National Parks and Wildlife Service
SF.160	Mibanbah HR	SFAZ		2	National Parks and Wildlife Service
SF.161	Muli Central	SFAZ		2	NSW Rural Fire Service
SF.162	Muli Clarence North	SFAZ		2	NSW Rural Fire Service
SF.163	Muli Northeast	SFAZ		2	NSW Rural Fire Service
SF.164	Muli South	SFAZ		2	NSW Rural Fire Service
SF.165	Muli West	SFAZ		2	NSW Rural Fire Service
SF.166	Native Jute East HR	SFAZ		2	National Parks and Wildlife Service
SF.167	Native Jute South HR	SFAZ		2	National Parks and Wildlife Service
SF.168	Native Jute West HR	SFAZ		2	National Parks and Wildlife Service
SF.169	Roseberry plantation HR	SFAZ		2	National Parks and Wildlife Service
SF.170	South Toonumbar SFAZ 2026	SFAZ		2	Forestry Corporation of NSW
SF.171	Target Lake HR	SFAZ		2	National Parks and Wildlife Service
SF.172	Wattle Creek SFAZ 2028	SFAZ		2	Forestry Corporation of NSW
SF.173	Wazza HR	SFAZ		2	National Parks and Wildlife Service
TF.174	Tabulam TCFB	TCFB	Bonalbo / Tabulam	1	Transport for NSW
TF.175	Woodenbong Rd TCFB	TCFB	Bonalbo / Tabulam	1	Kyogle Council

*Strategy: GP (Grazing Program); IMZ (Ignition Management Zone); LFB (Linear Firebreak); LMZ (Land Management Zone), SFAZ (Strategic Fire Advantage Zone), TCFB (Transport Corridor Fire Break). See [Annexure C of BFCC Policy 01/2023](#) for further information on bush fire management zones including a description of the zones and their purposes.

Note:

The Transport Corridor Fire Breaks identified by Transport for NSW along the state road network, noted in the Fuel Management Register will be managed in line with the Transport for NSW Roadside Clearing Guidelines (defined by the back of the table drain or 4m from the edge of asphalt, or 1.2m beyond the back of the safety barrier).

Table 2.3 Neighbourhood Safer Places*			
Title	Type	Location	LGA
Bonalbo Community Hall	Building	Koreelah Street, Bonalbo	Kyogle
Bundgeam Community Hall	Building	34 Terrace Road, Terrace Creek	Kyogle
Kyogle Memorial Institute Hall	Building	Stratheden Street, Kyogle	Kyogle
Old Bonalbo Soldiers Memorial Hall	Building	8 Duck Creek Road, Old Bonalbo	Kyogle
Dunoon Sports Club	Building	15 Cowley Road, Dunoon	Lismore
Koonorigan/Goolmangar RFS Station	Building	Koonorigan Road (near Nimbin Road), Koonorigan	Lismore
Lismore Showgrounds	Building	109 Alexandra Parade, North Lismore	Lismore
Rock Valley Community Hall	Building	Rock Valley Road, Rock Valley	Lismore
Tregeagle Community Hall	Building	820 Tregeagle Road, Tregeagle	Lismore
Broadwater Hall	Building	Little Pitt Street, Broadwater	Richmond Valley
Whiporie Hall	Building	5341 Summerland Way, Whiporie	Richmond Valley
Tabulam Village	Open Space	Court Street, Tabulam	Kyogle
Wiangaree Rodeo & Sportsground	Open Space	Worendo Street, Wiangaree	Kyogle
Peace Park	Open Space	Sibley Street, Nimbin	Lismore
Colley Park	Open Space	West Street, Casino	Richmond Valley
Coraki Hockey Fields	Open Space	Bridge Street, Coraki	Richmond Valley
Evans Head Sporting Ground	Open Space	Booyong Street, Evans Head	Richmond Valley
Riverside Park	Open Space	Pacific Highway, Woodburn	Richmond Valley

*This list is current at the date of BFRMP approval. Visit the NSW RFS website for live, up to date information on Neighbourhood Safer Place locations: www.rfs.nsw.gov.au

Appendix 3

Maps

- 3.1 Residential and Special Fire Protection Purpose Risk Current
- 3.2 Economic Risk Current
- 3.3 Aboriginal Predicted Sites Risk Current
- 3.4 Environmental Risk Current
- 3.5 Historic Heritage Risk Current
- 3.6 Focus Areas and Fuel Management Register

The Appendix 3 Maps for the Northern Rivers Bush Fire Risk Management Plan are not included in this pdf document. The Maps are available on the RFS Website:

<https://www.rfs.nsw.gov.au/plan-and-prepare/managing-bush-fire-risk/bush-fire-management-committees/northern-rivers>

Known Aboriginal sites and Historic Heritage data was also assessed in the development of this BFRMP, however due to the sensitive nature of the data bush fire risk maps for these assets are not being shared for public exhibition at this time.

Appendix 4 Communication Strategy

Date/ timeframe	Target Audience	Method of communication	Method of notification	Key messages/ purpose	Resources required	Responsibility
22 nd November 2023	NSW RFS Senior Volunteers	Workshop 1	Emails Phone calls Teams	Introduction to next generation BFRMP Data validation	Venue Facilitators Maps	NSW RFS Northeast team Risk Planning team NSW RFS
23 rd November 2023	BFMC members	Workshop 1	Emails Phone calls Teams	Introduction to next generation BFRMP Data validation	Venue Facilitators Maps	NSW RFS Northeast team Risk Planning team NSW RFS
23 rd May 2024	BFMC members and Senior RFS Volunteers	Workshop 2(a)	Emails Phone calls Teams	Identify Focus Areas Discuss treatment options	Venue Facilitators Maps	NSW RFS Northeast team Risk Planning team NSW RFS
22 nd August 2024	BFMC members and Senior RFS Volunteers	Workshop 2(b)	Emails Phone calls Teams	Finalise Fuel Management Register Finalise Draft Risk Plan	Venue Facilitators Maps	NSW RFS Northeast team Risk Planning team NSW RFS
20 th November 2025	BFMC members and Senior RFS Volunteers	Workshop 3	Emails Phone calls Teams	Review Updated Risk Data Arrange the Public Exhibition Process	Venue Facilitators Maps	NSW RFS Northeast team Risk Planning team NSW RFS
April/May 2026	General Public	Public Exhibition	Social media Local Media Website	Community Consultation Feedback on the Plan	Templates Agency Social media platforms	NSW RFS Northeast team BFMC NSW RFS
TBA	BFMC members	Workshop 4	Emails Phone calls Teams	Review Comments from Public exhibition Prepare for approval process	Venue Facilitators Draft Plan maps	NSW RFS Northeast team Risk Planning team NSW RFS



Planning together

Northern Rivers Bush Fire Management Committee

Bush Fire Coordinating Committee – Policy No 01/2023
Adopted by the Bush Fire Coordinating Committee – Minute No 104.11



Prepared by the NSW Rural Fire Service
On behalf of the Bush Fire Coordinating Committee