

© Department of Customer Service 2020

**LEGEND**

- Bush Fire Management Committee (BFMC)
- Predicted Aboriginal Sites Risk Current**
- Lowest Risk
- Low Risk
- Moderate Risk
- High Risk
- Highest Risk

**Map Description**

**Predicted Aboriginal Sites Risk Current**  
 This bushfire risk map shows the current level of modelled bushfire risk to predicted Aboriginal site locations across the BFMC. Aboriginal site locations used in the model are based on data from the NSW Aboriginal Sites Decision Support Tool (ASDST). Predicted site occurrences have been subject to a quantitative risk modelling process that considers the vulnerability of sites, the accumulated impact of non-indigenous land use on sites and the likelihood that sites will be exposed to a bushfire event that could cause a destructive impact. Each coloured square on the map represents the relative level of risk to Aboriginal sites across the BFMC. Site locations in the lowest risk category can still be damaged by a bushfire. Site locations in lower risk levels are less likely to be exposed to a fire that will cause it damage relative to other areas that are in a high-risk level category.

**WARNING INFORMATION**

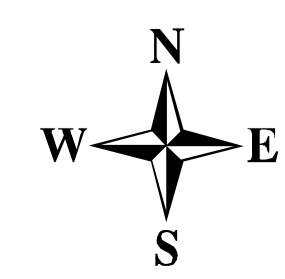
1. This map has been prepared by a NSW Government Agency ("the Agency") using data supplied to it by other agencies and entities.
2. The Agency has not verified or checked the data used to prepare this map. The map may contain errors and omissions. The Agency has not made any attempt to ground truth the map.
3. There will be a margin of error in relation to the location of features recorded on the map. The Agency is unable to specify the extent or magnitude of that margin of error.
4. Significant changes may have occurred:
  - i. in the time between which the data was originally collected and the map produced; and
  - ii. since the map was produced.
5. Users must, wherever possible, ground truth the map before relying on it or the accuracy of the map or the information recorded on the map for any purpose.
6. The Agency accepts no responsibility for any injury loss or damage arising from the use of this map or any errors or omissions in the information recorded on the map.

Scale: 1:180,000

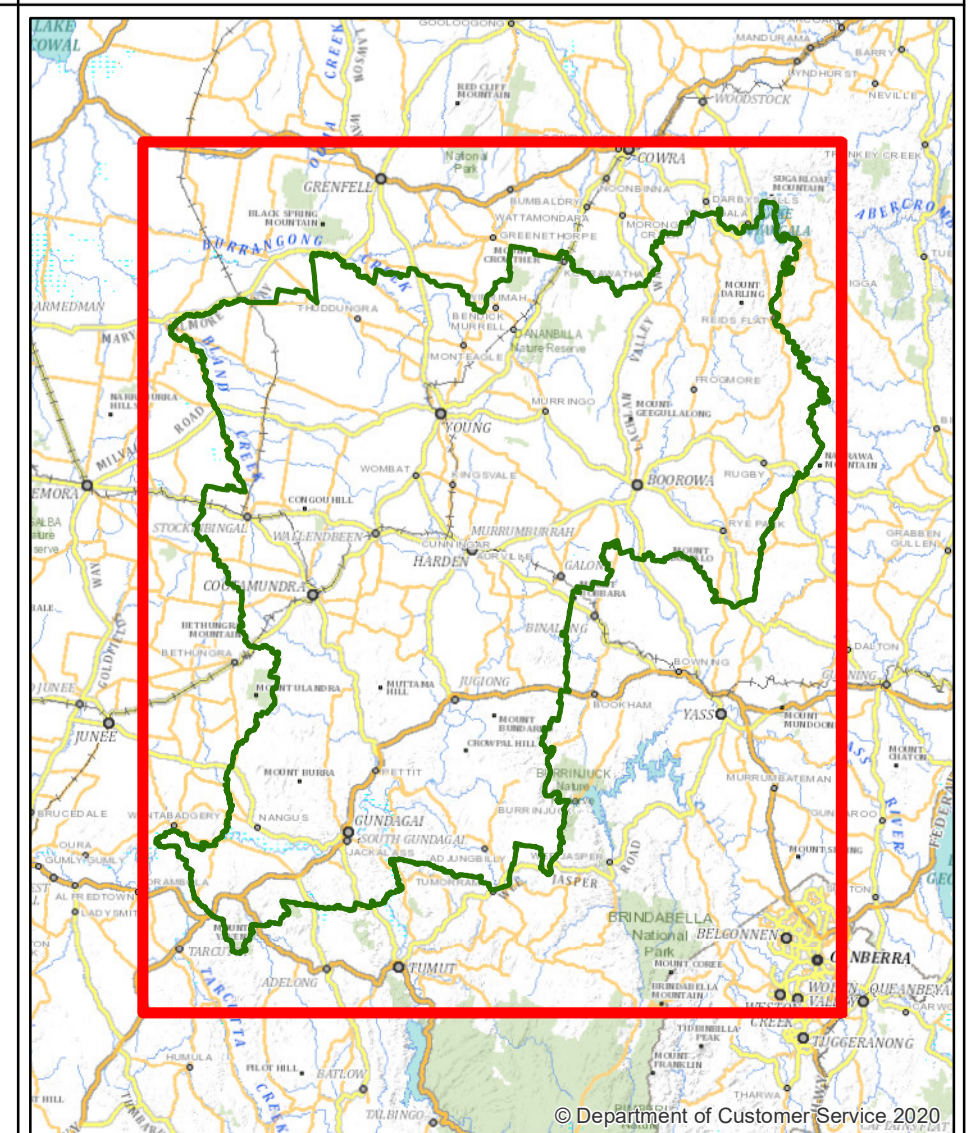


**PRODUCTION INFORMATION**

Base Data: © LPI, SPOT, SKM, OEH, Sensis, Katron  
 Map Projection: GDA 1984 NSW Lambert  
 Projection: Lambert Conformal Conic  
 Print Date 31/07/2023 7:07:45 PM  
 Produced by: NSW Rural Fire Service for the BFMC



**KEY MAP**



© Department of Customer Service 2020



South West Slopes

Predicted Aboriginal Sites Risk Current