

**Mid Murray Zone
Bush Fire Management Committee**

Bush Fire Risk Management Plan

Prepared by the Mid Murray Zone Bush Fire Management Committee; pursuant to section 52 of the Rural Fires Act, 1997.

Table of Contents

<i>Glossary</i>	7
<i>Chapter 1. Introduction</i>	9
1.1 Background	9
1.2 Aim and Objectives	9
1.3 Description of the Mid Murray Zone BFMC area	10
1.3.1 Location and land tenure	10
1.3.2 Climate and bush fire season	10
1.3.3 Population and demographic information	11
1.3.4 History of bush fire frequency and ignition cause	11
<i>Chapter 2. Identifying and assessing the bush fire risk</i>	12
2.1 Process	12
2.2 Communication and consultation	12
2.3 Identifying the bush fire risk	13
2.3.1 Assets	13
2.3.2 Assessing the bush fire risk - consequence	14
2.3.3 Assessing the bush fire risk - likelihood	15
2.3.4 Identifying the level of risk	15
2.3.5 Evaluating the bush fire risk	15
2.3.6 Prioritising treatments	15
2.3.7 Risk acceptability	15
<i>Chapter 3. Treating the risk</i>	16
3.1 Bush Fire Management Zones	16
3.2 BFMC wide treatments	17
3.3 Asset specific treatments	19
3.4 Fire thresholds	20
3.5 Annual works programs	21
3.6 Implementation	21
<i>Chapter 4. Performance monitoring and reviewing</i>	22
4.1 Review	22
4.2 Monitoring	22
4.3 Reporting	22
4.4 Performance Measurements	22
<i>Appendix 1 Community Participation Strategy</i>	23
<i>Appendix 2 Asset Register</i>	24
<i>Appendix 3 Treatment Register</i>	33
<i>Appendix MDA Maps 1 to 7, Mid Murray Zone overview map</i>	34

List of Tables

Table 1.1 Land tenure 10
Table 3.1 Bush Fire Management Zones: Purpose, objectives and characteristics 17
Table 3.2 Asset specific treatments used in the Mid Murray Zone BFMC area 19
Table 3.3 Fire Thresholds for Vegetation Categories 20

List of Figures

Figure 2.1 Overview of the risk assessment process 12

Authorisation

In accordance with Part 3 Division 4 of the Rural Fires Act 1997, this Draft Plan has been prepared by the Mid Murray Zone Bush Fire Management Committee and has been endorsed at the BFMC meeting on 8 April 2009 for submission to the Bush Fire Coordinating Committee.

Recommended



Aaron Drenosvki

Chairperson
Mid Murray Zone Bush Fire Management Committee

Approved



.....
Shane Fitzsimmons
Chairman
NSW Bush Fire Coordinating Committee



On behalf of the
NSW Bush Fire Co-ordinating Committee

Amendment List

Amendment		Entered	
Number	Date	Signature	Date

Glossary

Assets: anything valued by the community which includes houses, crops, heritage buildings and places, infrastructure, the environment, businesses, and forests, that may be at risk from bush fire.

Bush Fire: a general term used to describe fire in vegetation, includes grass fire.

Bush Fire Hazard: the potential severity of a bush fire, which is determined by fuel load, fuel arrangement and topography under a given climatic condition.

Bush Fire Risk: the chance of a bush fire igniting, spreading and causing damage to the community or the assets they value.

Bush Fire Risk Management: a systematic process that provides a range of treatments which contribute to the well being of communities and the environment, which suffer the adverse effects of wildfire/bush fire.

Bush Fire Threat: potential bush fire exposure of an asset due to the proximity and type of a hazard and the slope on which the hazard is situated.

Consequence: outcome or impact of a bush fire event.

Fire Fighting Authorities: the NSW Rural Fire Service, NSW Fire Brigades, the National Parks and Wildlife Service and Forests NSW.

Likelihood: the chance of a bush fire igniting and spreading.

Major Bush Fire: A bush fire which requires the attendance of multiple brigades, or causes damage to property or injury to one or more persons.

Display area: geographic area determined by the Bush Fire Management Committee which is used to provide a suitable area and scale for community participation and mapping display purposes.

Recovery costs: the capacity of an asset to recover from the impacts of a bush fire.

Risk Acceptance: an informed decision to accept the consequences and the likelihood of a particular risk.

Risk Analysis: a systematic process to understand the nature of and to deduce the level of risk.

Risk Assessment: the overall process of risk identification, risk analysis and risk evaluation.

Risk Identification: the process of determining what, where, when, why, and how something could happen.

Risk Treatment: the process of selection and implementation of measures to modify risk.

Vulnerability: the susceptibility of an asset to the impacts of bush fire.

Chapter 1. Introduction

1.1 Background

Under the *Rural Fires Act 1997* the Bush Fire Coordinating Committee (BFCC) must constitute a Bush Fire Management Committee (BFMC) for each area in the State, which is subject to the risk of bush fires. Each BFMC is required to prepare and submit to the BFCC a draft Bush Fire Risk Management Plan (BFRMP).

A BFRMP is a strategic document that identifies community assets at risk and sets out a five-year program of coordinated multi-agency treatments to reduce the risk of bush fire to the assets. Treatments may include such things as hazard reduction burning, grazing, community education, fire trail maintenance and establishing community fireguard groups.

Annual programs to implement the treatments identified in this plan will be undertaken by the relevant land managers and fire fighting authorities.

In exercising its functions under the *Rural Fires Act 1997*, including the preparation of a draft bush fire risk management plan, the Mid Murray Zone BFMC is required to have regard to the principles of ecologically sustainable development (ESD).

This document and the accompanying maps together form the BFRMP for the Mid Murray Zone BFMC area.

This BFRMP has been prepared by the Mid Murray Zone BFMC and covers both public and private lands. This BFRMP must be reviewed and updated within each successive five-year period from the constitution of the BFMC.

The BFCC recognises that climate change has the potential to increase bush fire risk. The risk assessment process applied in this BFRMP is based on current climatic conditions. The BFCC will monitor information on climate change and will modify the process when necessary.

1.2 Aim and Objectives

The **aim** of this BFRMP is to minimise the risk of adverse impact of bush fires on life, property and the environment.

The **objectives** of this BFRMP are to:

- reduce the number of human - induced bush fire ignitions that cause damage to life, property and the environment;
- manage fuel to reduce the rate of spread and intensity of bush fires, while minimising environmental/ecological impacts;
- reduce the community's vulnerability to bush fires by improving its preparedness; and
- effectively contain fires with a potential to cause damage to life, property and the environment.

1.3 Description of the Mid Murray Zone BFMC area

1.3.1 Location and land tenure

The Mid Murray Zone BFMC area is located in the Southern Riverina, New South Wales and includes the Local Government Areas of Conargo, Deniliquin, Jerilderie, Murray and Wakool.

The area covered by the Mid Murray Zone BFMC is 24,191 square kilometres (Conargo 8,847 square km, Deniliquin 130 square km, Jerilderie 3,337 square km, Murray 4,328 Square km, Wakool 7,549 Sq km) and includes the land tenures outlined in Table 1.1.

Land Manager	% of BFMC area
National Parks & Wildlife Service	1%
Forests NSW	4%
Department of Lands (Crown Land)	10%
Local Government	10%
Private	74%
All other	1%

Table 1.1 Land tenure

1.3.2 Climate and bush fire season

The typical / average climate in the Mid Murray Zone area is warm temperate with predominantly winter rainfall. The bush fire season generally runs from October - November through to March - April depending on seasonal conditions. Fire weather conditions are usually associated with winds from the West around to the North accompanied by high daytime temperatures and low relative humidity. Dry lightning storms occur frequently during the bush fire season often starting forest and grass fires.

Rainfall in the Mid Murray Zone is spread across the year although peaking in late winter and spring. Mean average rainfall is generally low, in the 350mm to 450mm range, with summer rainfall of between 20mm & 30mm a month and winter rainfall of between 30mm & 40mm per month. Annual variations from these figures can be extreme producing droughts or floods.

Weather extremes do occur in summer with temperatures up to 45 degrees Celsius, low humidity (5%) and strong winds (+60kph) which have combined with disastrous results. Daily averages for the hottest month of the year are minimum 16.9 degrees and maximum 31.7 degrees. Summer rainfall is usually as a result of thunderstorms. With high temperatures and low humidity during summer and early autumn, evaporation is high averaging 7mm per day.

In winter temperatures at and below zero are not uncommon with regular frosts. Daily averages for the coldest month of the year are minimum 3.7 degrees and maximum 13.6 degrees.

1.3.3 Population and demographic information

The population of the Mid Murray Zone BFMC area is approximately 22,650 people (Conargo 1,850; Deniliquin 7,500; Jerilderie 1,900; Murray 6,500; Wakool 4,900). The major population centres are Barham, Deniliquin, Jerilderie, Mathoura, Moama and Moulamein.

The following issues have been identified within the Mid Murray Zone BFMC area as potentially impacting on the ability of certain sections of the community to prepare themselves for bush fire:

- Seasonal population changes with high tourist numbers in forest areas throughout the year, particularly long weekends and school holidays.
- Down to Earth Festival sites near Deniliquin and Moulamein during Easter and Christmas also present problems. An influx of up to 3,000 people with little local knowledge, lack of resources and little fire fighting knowledge. Problems include lack of familiarity and limited access.

1.3.4 History of bush fire frequency and ignition cause

The Mid Murray Zone BFMC area has on average 250 bush/grass fires per year, of which 6 to 10 on average can be considered to be major fires.

The main sources of ignition in the Mid Murray Zone BFMC area are lightning strikes, unattended camp fires, power lines, machinery & traffic, escaped agricultural burns and the use of cutting and welding equipment.

Potential major risk seasons follow significant periods of high growth from high winter rainfall. These seasons allow the build-up of fine fuels and create the potential for a major season across the whole of the Mid Murray Zone when this material cures. Over the last fifty years these potential major seasons have been 1956/57, 1974/75, 1975/76, 1989/90, all of these seasons have followed significant high winter rainfall.

Chapter 2. Identifying and assessing the bush fire risk

2.1 Process

The Australia/New Zealand Standard *AS/NZS 4360: 2004 Risk Management* was used as the basis for the risk assessment process. See Figure 2.1 for the steps involved. For a detailed description of the process undertaken see the Bush Fire Risk Management Planning Guidelines for Bush Fire Management Committees on the RFS website: www.rfs.nsw.gov.au.

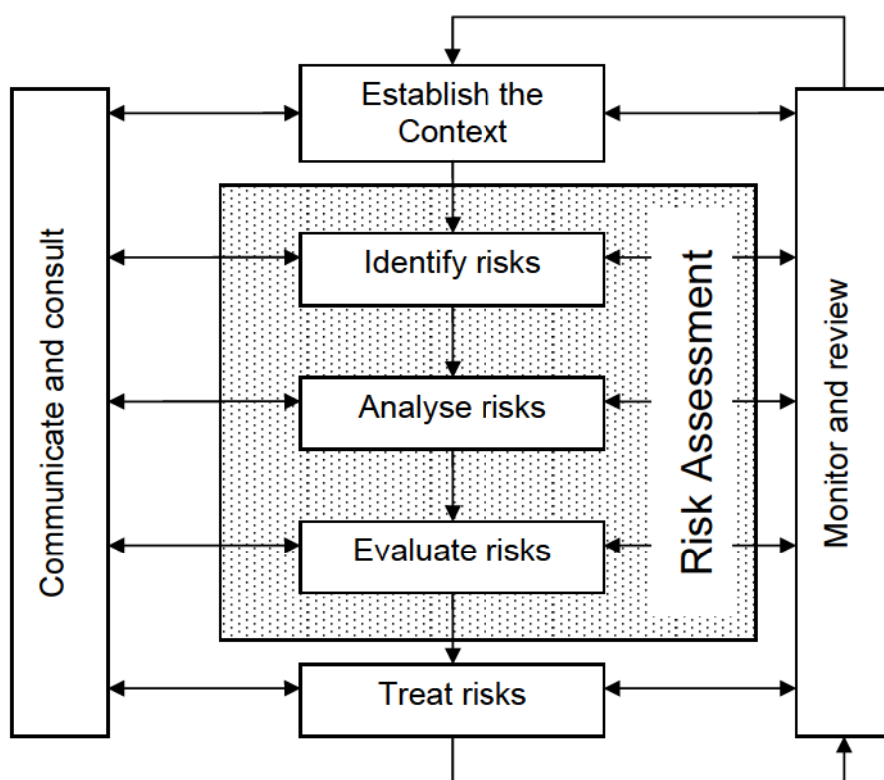


Figure 2.1 Overview of the risk assessment process

2.2 Communication and consultation

Community participation is an integral part of risk management. The Community Participation Strategy involved developing and implementing a process to address the needs, issues and concerns of stakeholders within the BFMC area in regards to the BFRMP. See Appendix 1 for the Community Participation Strategy used by the Mid Murray Zone BFMC in preparing this BFRMP.

2.3 Identifying the bush fire risk

Identifying the level of bush fire risk firstly involved identifying important community assets considered to be at risk from bush fire in the Mid Murray Zone BFMC area, and then assessing the likelihood and consequence ratings.

2.3.1 Assets

Mid Murray Zone BFMC members and the community, including RFS volunteers, identified assets within the Mid Murray Zone that they believed were at risk of bush fire.

The assets were divided into four asset types:

Human settlement

- Residential areas including urban bushland interface areas and rural properties;
- Special Fire Protection areas including schools, hospitals, nursing homes, and tourist facilities; and
- Other human settlement areas including commercial and industrial areas where distinct from major towns.

Economic

- Agricultural; e.g. major silos, regional saleyards, cropping/grazing land;
- Commercial/industrial e.g. major industries, waste treatment plants, sawmills;
- Infrastructure e.g. large power lines, gas and oil pipelines, railway lines, electricity substations, communication facilities;
- Tourist and recreational e.g. tourist sites and facilities, resorts, retreats;
- Mines;
- Commercial forests e.g. pine plantations, eucalypt plantations and commercial native forests; and
- Drinking water catchments.

Environmental

- Threatened species, populations and ecological communities and Ramsar wetlands;
- Locally important species and ecological communities, such as species and ecological communities especially sensitive to fire.

Cultural

- Aboriginal significance – Aboriginal places and items of significance;
- Non-indigenous heritage – places and items arising from the early occupation of NSW by European or other non-indigenous settlers; and
- Other cultural assets – community halls, clubs and recreational facilities.

See Appendix 2 for the full list of assets identified in the Mid Murray Zone BFMC area. See maps 1 to 6 for the location of assets to be treated under this BFRMP.

2.3.2 Assessing the bush fire risk - consequence

Once the assets were identified, the consequence of a bush fire impacting on these assets was assessed.

See Appendix 2 for the consequence ratings assigned to each asset identified in the Mid Murray Zone BFMC area.

The different asset types had different assessment processes used to determine the consequence. These processes are identified below.

Human settlement

A potential fire behaviour model using vegetation type, slope and separation distance was used to produce a threat rating for human settlement assets. The vulnerability of the asset to a bush fire was also assessed and a rating assigned. These ratings were then used to assess the consequence of a bush fire impacting upon a human settlement asset.

Special Fire Protection (SFP) assets were considered inherently more vulnerable to bush fire due to mobility capacity, knowledge or other issues relating to their inhabitants, (e.g. the elderly, infirm, children or tourists) and therefore stricter requirements for vulnerability assessment and rating were applied.

Economic

The level of economic impact e.g. local, regional or state, as well as the economic recovery costs (how long and complicated a financial recovery will be) of the asset were identified. These ratings were used to assess the consequence of a bush fire impacting upon an economic asset.

Environmental

Environmental assets with known minimum fire threshold were assessed to determine if they were at risk of a bush fire within the 5 year life of the BFRMP using fire history data. Those environmental assets which were within or above the fire threshold were not assessed in the BFRMP, as the negative impact of a fire within the 5 year period was determined as being low and may even be of benefit to the asset and surrounding habitat.

The vulnerability of an environmental asset was determined by its conservation status and its geographic extent (distribution across the landscape). Vulnerability and potential impact of bush fire were used to assess the consequence of a bush fire impacting upon an environmental asset.

Cultural

For non-indigenous historical, Aboriginal and other cultural assets a potential fire behaviour model using fuel load, slope and proximity was used to produce a threat rating. The physical vulnerability of the asset to a bush fire was also assessed. These ratings were then used to assess the consequence of a bush fire impacting upon a cultural asset.

2.3.3 Assessing the bush fire risk - Likelihood

For all asset types the likelihood of a bush fire occurring was assessed. This involves considering fire history, including ignition cause and patterns, known fire paths, access, containment potential and potential fire run (size of the vegetated area). See Appendix 2 for the likelihood ratings assigned to each asset identified in the Mid Murray Zone BFMC area.

2.3.4 Identifying the level of risk

The consequence and likelihood ratings were then used to identify the level of risk. See Appendix 2 for the risk ratings assigned to each asset identified in the Mid Murray Zone BFMC area.

2.3.5 Evaluating the bush fire risk

Once the risk ratings for each asset were identified, they were evaluated to:

- a) confirm that risk levels identified in the risk analysis process are appropriate and reflect the relative seriousness of the bush fire risk;
- b) identify which assets require treatments; and
- c) identify treatment priorities.

2.3.6 Prioritising treatments

No organisation has limitless resources to deal with adverse risk. It is therefore necessary to define priorities. The bush fire risk ratings determined were used to prioritise the risk treatments, i.e. areas of extreme risk were considered first for treatment, then very high, then high then medium then low.

2.3.7 Risk acceptability

Risks below a certain level were assessed as not requiring treatment within the life of this plan. This is due to a combination of risk priority and capacity to undertake the works. Within the Mid Murray Zone BFMC area the level of acceptability is low. Areas of low risk, and cultural and environmental assets are likely to be managed by routine procedures and so do not require a specific application of resources. However the BFMC will endeavour to treat acceptable risk if possible.

Chapter 3. Treating the risk

3.1 Bush Fire Management Zones

Bush Fire Management Zones were identified within the Mid Murray Zone BFMC area and mapped (see maps 1 to 6). These zones identify the fire management intent for a specific area. See Table (3.1) for descriptions of the zones and their purposes. The four categories of Bush Fire Management Zones are:

- Asset Protection Zone (APZ);
- Strategic Fire Advantage Zone (SFAZ);
- Land Management Zone (LMZ); and
- Fire Exclusion Zone (FEZ).

Strategic Fire Advantage Zones have been identified within the Mid Murray Zone to allow for mosaic or patch burning to complement asset protection zones where in place and to provide strategically located varying fuel loads to more easily suppress and reduce the potential for large wildfires to develop and spread.

Zone	Purpose	Suppression Objective(s)	Zone characteristics
Asset Protection Zone	To protect human life, property and highly valued public assets and values.	To enable the safe use of Direct Attack suppression strategies within the zone. To minimise bush fire impacts on undefended assets.	As per RFS document <i>Standards for Asset Protection Zones</i> .
Strategic Fire Advantage Zone	To provide strategic areas of fire protection advantage which will reduce the speed and intensity of bush fires, and reduce the potential for spot fire development; To aid containment of wildfires to existing management boundaries.	To improve the likelihood and safe use of: Parallel Attack suppression strategies within the zone. and/or Indirect Attack (back burning) in high to very high fire weather conditions within the zone. To reduce the likelihood of: Crown fire development within the zone. and/or Spot fire ignition potential from the zone	Zone width related to suppression objectives and dependant upon: <ul style="list-style-type: none"> • Topography • Aspect • Spotting propensity • Location of adjacent firebreaks • Mosaic pattern of treatment Assess Overall Fuel Hazard (OFH) once vegetation communities reach minimum fire thresholds within this plan. Management practices should aim to achieve mosaic fuel reduction patterns so that the majority of the SFAZ has an OFH of less than high.

Land Management Zone	To meet relevant land management objectives in areas where APZs or SFAZs are not appropriate.	As per the land management and fire protection objectives of the responsible land management agency. To reduce the likelihood of spread of fires. To undertake mosaic burning	As appropriate to achieve land management e.g. heritage and/or fire protection, ecological e.g. broad scale mosaic burning objectives.
Fire Exclusion Zone	Where possible to exclude and/or control bush fires in State Forests. Exclude fires in SF for Hazard Reduction	Control bush fires in SF where possible to minimise the effect of fire on the forest areas	Variable dependant on size of fire sensitive area requiring protection.

Table 3.1 Bush Fire Management Zones: Purpose, objectives and characteristics

NB: OFH refers the Overall Fuel Hazard Guide as described in the document published by (Dept. of Sustainability and Environment 3rd edition. 1999 & NPWS version); State-wide procedures for assessment of fuel hazard will be developed in conjunction with the BFCC.

Note: All areas that are not mapped or described as APZs or SFAZs are considered as LMZs.

*For the purpose of the Bush Fire Environmental Assessment Code:

3.2 BFMC wide treatments

BFMC wide treatments are activities which reduce the overall bush fire risk within the BFMC area and are undertaken on an ongoing basis as part of normal business. These treatments are not linked to specific assets in the BFRMP, rather they are applied across all or part of the BFMC area as designated by legislation or agency policy. BFMC wide treatments include the following:

- **Reviewing the bush fire prone land map**

These maps identify bush fire prone land and are used to trigger whether a development application is assessed using *Planning for Bush Fire Protection*¹.

- **Ensuring developments in bush fire prone land comply with *Planning for Bush Fire Protection***

This assessment process requires new applications for development to include bush fire protection measures.

- **Using the Local Environment Plan/s (LEPs) to control developments in areas with a bush fire risk**

LEPs can be used to exclude development in extreme bush fire risk areas or where bush fire protection measures cannot be incorporated.

¹ NSW Rural Fire Service 2006 *Planning for Bush Fire Protection: A guide for councils, planners, fire authorities and developers.*

- **Varying the standard bush fire danger period as required**

In years where the weather is particularly adverse the bush fire danger period may be brought in early or extended. This is assessed every year by the BFMC.

- **Requiring permits during the bush fire danger period**

In the bush fire danger period a fire safety permit is required to light a fire in the open. Permits specify conditions such as fire fighting equipment that must be on site, or restrict burns based on weather conditions.

- **Prosecution of offenders in relation to deliberate ignitions**

Under the *Rural Fires Act 1997* persons may be prosecuted for breaching the conditions on a fire permit, lighting a fire during a Total Fire Ban, allowing fire to escape their property, or other breaches of the Act.

The member agencies of the BFMC will co-operate with the NSW Police in relation to the prosecution of arsonists under the Crimes Act 1900.

- **Investigation of bush fire cause**

All bush fires which do not have a known cause are investigated to identify how they started.

- **Normal fire suppression activities**

Responding to bush fire is a normal business activity for the fire fighting authorities.

- **Assessing and managing compliance with strategic fire fighting resource allocation provisions**

Strategic fire fighting resource allocation provisions is the process used to identify the number of stations, brigades and appliances required in an area and considers members, training, assets and hazards.

- **Preparation of a S52 Operations Coordination Plan**

The Operations Coordination Plan is prepared biannually and sets out how coordinated fire fighting will occur. It includes specific operational restrictions on fire fighting techniques in certain areas, where fires will be managed from, and how agencies involved can communicate during operations.

- **Fire Management Plans or Plans of Management**

Some land management agencies have developed fire management plans or plans of management with specific fire or fuel management strategies, for example a Forests NSW Regional Fuel Management Risk Plan, a NPWS Fire Management Strategy. These publicly exhibited plans form the basis for operational fire planning on public parks, reserves and forests.

- **Bush Fire Hazard Complaints**

If someone is concerned about possible bush fire hazards on a neighbouring property or any other land, then this can be reported to

the RFS Commissioner or their local RFS Fire Control Centre. The complaint will be investigated and may result in a notice being issued to the landowner or manager to reduce the hazard.

3.3 Asset specific treatments

There are four broad strategy groups available to treat the bush fire risk to assets identified in the BFRMP.

The types of asset specific treatments in each strategy group used in the Mid Murray Zone BFMC area are listed below. A full list of the treatment strategies in the Mid Murray Zone BFMC area are in Appendix 3.

Strategy	Targeted treatments used in the <i>Mid Murray Zone BFMC area</i>
Ignition Management	Implement fire management notification during the Bush Fire Danger Period.
Hazard Reduction	Grazing, Slashing, Ploughing or Grading. Annual road maintenance.
Community Education	Publish media releases at start of fire season. Contact schools annually, visit on request.
Preparedness	Property preparedness education displays at shows and events.

Table 3.2 Asset specific treatments used in the Mid Murray Zone BFMC area

3.4 Fire thresholds

Fire threshold mapping has not been undertaken and isn't included in the final BFRMP for the Mid Murray Zone.

Vegetation formation	Minimum SFAZ Threshold	Minimum LMZ Threshold	Maximum Threshold	Notes
Rainforest	NA	NA	NA	Fire should be avoided.
Alpine complex	NA	NA	NA	Fire should be avoided.
Wet Sclerophyll forest (shrubby subformation)	25	30	60	Crown fires should be avoided in the lower end of the interval range.
Wet Sclerophyll forest (grassy subformation)	10	15	50	Crown fires should be avoided in the lower end of the interval range.
Grassy woodland	5	8	40	Minimum interval of 10 years should apply in the southern Tablelands area. Occasional intervals greater than 15 years may be desirable.
Grassland	2	3	10	Occasional intervals greater than 7 years should be included in coastal areas. There was insufficient data to give a maximum interval; available evidence indicates maximum intervals should be approximately 10 years.
Dry sclerophyll forest (shrub/grass subformation)	5	8	50	Occasional intervals greater than 25 years may be desirable.
Dry sclerophyll forest (shrub subformation)	7	10	30	Occasional intervals greater than 25 years may be desirable.
Heathlands	7	10	30	Occasional intervals greater than 20 years may be desirable.
Freshwater wetlands	6	10	35	Occasional intervals greater than 30 years may be desirable.
Forested wetlands	7	10	35	Some intervals greater than 20 years may be desirable.
Saline wetlands	NA	NA	NA	Fire should be avoided.
Semi-arid woodlands (grassy subformation)	6	9	No max	Not enough data for a maximum fire interval.
Semi-arid woodlands (shrubby subformation)	10	15	No Max	Not enough data for a maximum fire interval.
Arid shrublands (chenopod subformation)	NA	NA	NA	Fire should be avoided.
Arid shrublands (acacia subformation)	10	15	No Max	Not enough data for a maximum fire interval.

Table 3.3 Fire Thresholds for Vegetation Categories

3.5 Annual works programs

The land management agencies and fire fighting authorities responsible for implementing the treatments identified in this plan will include those treatments in their annual works programs detailing how, when, and where the required activities will be undertaken.

3.6 Implementation

When the treatments identified in this BFRMP are implemented there are a number of issues that need to be considered by the responsible agency including environmental assessments and approvals, smoke management and prescribed burn plans.

Local permit issuing/hazard reduction burning exclusion periods

In the Mid Murray Zone BFMC area the issuing of permits/hazard reduction burning is not permitted from 1 December to 31 January (excepting Jerilderie CIA where the no burn period is over the Christmas break) unless a special permit for agricultural purposes has been issued in conjunction with Rural Fire Service Staff, Brigade Captains and Group Officers.

Chapter 4. Performance monitoring and reviewing

4.1 Review

This BFRMP must be reviewed and updated within each successive five-year period from the constitution of the BFMC. The Mid Murray Zone BFMC will also review this plan as necessary to account for any changes in context or risk. This may be triggered by a range of circumstances, including but not limited to:

- changes to the BFMC area, organisational responsibilities or legislation;
- changes to the bush fire risk in the area; or
- following a major fire event.

4.2 Monitoring

The BFMC is required to monitor progress towards the completion of treatment works listed in the BFRMP, and the timeliness of the works.

4.3 Reporting

The BFMC is required to report annually to the BFCC on its progress in implementing the bush fire risk management activities identified in this plan.

4.4 Performance Measurements

State wide performance measurements which are linked to the BFRMP have been identified by the BFCC. All BFMCs must use these to monitor and report on their success in reducing the bush fire risk in their BFMC area.

Appendices

Appendix 1 Community Participation Strategy

Date	Target Audience	Method of communication	Method of notification	Key messages/ purpose	Resources required	Responsibility
18.12.07	Mid Murray volunteers	Media release	Fax by fax stream to 189 fax numbers	Advise vols process for BFRMP commenced	Media release & fax	CSO
19.12.08	Mid Murray residents	Radio interview Graham Munson, 2QN – 102.5FM	Radio	Advise Mid Murray residents process for BFRMP commenced	Media release, radio, phone	CSO
20.12.08	NSW Riverina residents	Radio interview Anne Delaney, ABC Riverina	Radio	Advise Riverina residents process for BFRMP commenced	Media release, radio, phone	CSO
4.01.08	Mid Murray residents	Pastoral Times news paper and syndicated Riverina papers	Newspaper	Advise Mid Murray residents process for BFRMP commenced	Media release, newspaper	CSO
Jan 2008	BFMC members	Media release by mail	Mail out to BFMC members (42)	Advise Mid Murray BFMC, process for BFRMP commenced	Media release, mail	CSO
23.01.08	Mid Murray service clubs	Media release by mail	Mail out to Mid Murray service clubs	Advise Mid Murray service clubs process for BFRMP commenced	Media release, mail	CSO
Jan 2008	Murrumbidgee & Murray CMA	Media release by mail	Mail out to CMA	Advise Mid Murray CMA process for BFRMP commenced	Media release, mail	CSO
March 2008	Mid Murray volunteers	Agenda item Mid Murray Captains meetings	Meeting discussion	Advise vols process for BFRMP under way	Agenda item in meeting notice	CSO
April 2008	Mid Murray volunteers	Agenda item Mid Murray liaison meetings	Meeting discussion	Advise vols process for BFRMP progressing	Agenda item in meeting notice	CSO
July-August 2008	Mid Murray volunteers	Agenda item Mid Murray Brigade meetings	Meeting discussion	Advise vols process for BFRMP progressing	Agenda item in meeting notice	CSO

Appendix 2 Asset Register

No	Asset type	Asset name	Asset Location	Display area	Likelihood	Consequence	Risk	Priority	Treatment
40	Human Settlement	Koraleigh	Koraleigh Road, Wakool	Wakool North-West	Unlikely	Moderate	Low	NA	1;2;3
25	Human Settlement	Conargo	Conargo Jerilderie Road, Conargo	Conargo East	Unlikely	Major	Medium	4	1;2;3;4;6
31	Human Settlement	Wanganella	Cobb Highway, Conargo	Conargo East	Unlikely	Moderate	Low	NA	1;2;3;6
32	Human Settlement	Pretty Pine	Cobb Highway, Conargo	Conargo West	Unlikely	Moderate	Low	NA	1;2;3;6
33	Human Settlement	Deniliquin	Cobb Highway, Deniliquin	Murray and Deniliquin	Unlikely	Moderate	Low	NA	1;2;3;4;5;6
34	Human Settlement	Mathoura	Cobb Highway, Murray	Murray and Deniliquin	Unlikely	Moderate	Low	NA	1;2;3;4;6
1	Human Settlement	Picnic Point	Picnic Point Road	Murray and Deniliquin	Likely	Major	Very High	2A	1;2;3
35	Human Settlement	Bunnaloo	Bunnaloo Mathoura Road, Murray	Murray and Deniliquin	Unlikely	Moderate	Low	NA	1;2;3;4;6
36	Human Settlement	Womboota	Barham Road, Murray	Murray and Deniliquin	Unlikely	Moderate	Low	NA	1;2;3
30	Human Settlement	Blighty	Riverina Highway Conargo	Conargo East	Unlikely	Moderate	Low	NA	1;2;3;4
39	Human Settlement	Moulamein	Barham-Moulamein Road, Wakool	Wakool North-West	Unlikely	Moderate	Low	NA	1;2;3;4;6

38	Human Settlement	Wakool	Wakool Road, Wakool	Wakool South-East	Unlikely	Moderate	Low	NA	NA	1;2;3;4;6
41	Human Settlement	Tooleybuc	Tooleybuc Road, Wakool	Wakool North-West	Unlikely	Moderate	Low	NA	NA	1;2;3;4;6
42	Human Settlement	Goodnight	Goodnight Road, Wakool	Wakool North-West	Unlikely	Moderate	Low	NA	NA	1;2;3
43	Human Settlement	Boooroban	Cobb Highway, Conargo	Conargo West	Unlikely	Moderate	Low	NA	NA	1;2;3;6
44	Human Settlement	Jerilderie	Newell Highway, Jerilderie	Jerilderie	Unlikely	Moderate	Low	NA	NA	1;2;3;4;6
61	Human Settlement	Murray Downs	Murray Downs Drive	Wakool South-East	Unlikely	Moderate	Low	NA	NA	1;2;3
26	Human Settlement	Moama	Murray Shire	Murray and Deniliquin	Unlikely	Major	Medium	4		1;2;3;4;5
71	Human Settlement	Cumeragurja	Bahma Road, Moama	Murray and Deniliquin	Unlikely	Moderate	Low	NA	NA	2
64	Human Settlement	Kyalite (Wakool)	Riverside Road, Wakool	Wakool North-West	Unlikely	Moderate	Low	NA	NA	1;2;3
37	Human Settlement	Barham	Moulamein-Barham Road, Wakool	Wakool South-East	Unlikely	Moderate	Low	NA	NA	1;2;3;4;5;6
58	Human Settlement	Jerilderie Hospital	Newell Highway, Jerilderie	Jerilderie	Unlikely	Moderate	Low	NA	NA	1
59	Human Settlement	Mallan Public School	Cunninyuek	Wakool South-East	Unlikely	Moderate	Low	NA	NA	1;2;4
57	Human Settlement	Blighty Public School	Blighty School Road, Blighty	Conargo East	Unlikely	Moderate	Low	NA	NA	1;2;4
53	Human Settlement	Mayrunga Public School	Mayrunga Road, Mayrunga	Conargo East	Unlikely	Moderate	Low	NA	NA	1;2;4
46	Economic	Caldwell Grain Silos	Barham Road, Caldwell	Murray and Deniliquin	Unlikely	Moderate	Low	NA	NA	

47	Economic	Bunnaloo Grain Silos	Bunnaloo	Murray and Deniliquin	Unlikely	Moderate	Low	NA	
48	Economic	Bunnaloo Fuel Depot	Bunnaloo	Murray and Deniliquin	Unlikely	Moderate	Low	NA	
63	Economic	Barbers Chicken Farm	Urana Road Jerilderie	Jerilderie	Unlikely	Moderate	Low	NA	
29	Economic	O'Briens Sawmill	East Barham Road, Wakool Shire	Wakool South-East	Likely	Minor	Medium	4	2
62	Economic	O'Neils Sawmill	Lower Thule Road, Wakool Shire	Wakool South-East	Unlikely	Minor	Low	NA	
60	Economic	Moulamein Grain Silos	Hay Road Moulamein	Wakool North-West	Unlikely	Moderate	Low	NA	
27	Economic	Chris Crump Sawmill	Picnic Point Road, Murray Shire	Murray and Deniliquin	Likely	Minor	Medium	4	2
52	Economic	Blighty Grain Silos	Riverina Highway Blighty	Conargo East	Unlikely	Moderate	Low	NA	
50	Economic	Barham Saw Mill	Moulamein Road Barham	Wakool South-East	Unlikely	Moderate	Low	NA	
45	Economic	Burraboi Grain Silos	Wakool Road Burraboi	Wakool South-East	Unlikely	Moderate	Low	NA	
51	Economic	Deniliquin Rice Mill	Wirraway Drive Deniliquin	Murray and Deniliquin	Unlikely	Moderate	Low	NA	
56	Economic	Emery Rice Sheds	Kidman Way Gala Vale	Jerilderie	Unlikely	Moderate	Low	NA	
55	Economic	Jerilderie grain storage and handling	Newell Highway Jerilderie	Jerilderie	Unlikely	Moderate	Low	NA	
54	Economic	Hogan Grain Silos	Newell Highway Jerilderie	Jerilderie	Unlikely	Moderate	Low	NA	
28	Economic	Loui Colturi Sawmill	Picnic Point Road, Murray Shire	Murray and Deniliquin	Likely	Minor	Medium	4	2

49	Economic	Moama Fuel Refinery	Cobb Highway, Moama	Murray and Deniliquin	Unlikely	Moderate	Low	NA	
69	Economic	Radio Tower Conargo Road	Conargo Road Jerilderie	Jerilderie	Unlikely	Moderate	Low	NA	
80	Economic	Jerilderie Power Sub Station	South Coree Road, Jerilderie	Jerilderie	Unlikely	Moderate	Low	NA	
18	Economic	Millewa State Forest Group	Conargo & Murray Deniliquin	Murray and Deniliquin	Likely	Major	Very High	2A	1;2;3
17	Economic	Koondrook & Perricoota State Forests	Wakool SE & Murray Deniliquin	Wakool South-East	Likely	Major	Very High	2A	1;2;3
3	Environment	Fauna	Carrathool Road Conargo	Conargo East	Likely	Major	Very High	2A	
4	Environment	Fauna	Jerilderie Road Conargo	Conargo East	Likely	Major	Very High	2A	
5	Environment	Fauna	Hatwell Road Conargo	Conargo East	Likely	Major	Very High	2A	
6	Environment	Fauna	Waugorah, North West Wakool	Wakool North-West	Likely	Major	Very High	2A	
7	Environment	Fauna	Yanga NP, North West Wakool	Wakool North-West	Likely	Major	Very High	2A	
8	Environment	Fauna	Tuppall State Forest Murray	Murray and Deniliquin	Likely	Major	Very High	2A	
9	Environment	Fauna	Wakool River Tulla	Wakool South-East	Likely	Major	Very High	2A	
10	Environment	Fauna	North West Jerilderie	Jerilderie	Likely	Major	Very High	2A	
11	Environment	Fauna	Lake Poon Boon Koraleigh	Wakool North-West	Likely	Major	Very High	2A	
13	Environment	Fauna	Moulamein Road Conargo West	Conargo West	Likely	Major	Very High	2A	

12	Environment	Fauna	Moulamein Road Dhurragoon	Wakool South-East	Likely	Major	Very High	2A
2	Environment	Fauna	Conargo North East	Jerilderie	Likely	Major	Very High	2A
15	Cultural	Deniliquin State Forest	Memorial Drive Deniliquin State Forest	Murray and Deniliquin	Likely	Major	Very High	2A
16	Cultural	Gulpa Island State Forest	Gulpa Island State Forest	Murray and Deniliquin	Likely	Major	Very High	2A
19	Cultural	Yanga Nature Reserve	Yanga NP	Wakool North-West	Likely	Moderate	High	3A
20	Cultural	Mallan, Wakool	Swan Hill Road Mallan	Wakool North-West	Likely	Moderate	High	3A
14	Cultural	Werai State Forest	Werai State Forest Wakool South East	Wakool South-East	Likely	Major	Very High	2A
21	Cultural	Caldwell, Murray	Barham Road Caldwell	Murray and Deniliquin	Likely	Moderate	High	3A
22	Cultural	Moama, Murray	Thyra Road, Moama	Murray and Deniliquin	Likely	Moderate	High	3A
24	Cultural	Logie Brae, Jerilderie	Mayrunga Road Logie Brae	Jerilderie	Likely	Moderate	High	3A
23	Cultural	Forest Creek, Conargo	Jerilderie Road Conargo	Conargo East	Likely	Moderate	High	3A
79	Cultural	Willurah Homestead	Willurah Road, Conargo	Conargo East	Unlikely	Moderate	Low	NA
91	Cultural	Peppin Merino Statue	Hay Road, Wanganella	Conargo East	Unlikely	Moderate	Low	NA
90	Cultural	Old Morago	Old Marago Road, Conargo	Conargo West	Unlikely	Moderate	Low	NA
89	Cultural	Murgha Homestead	Moulamein Road, Conargo	Conargo West	Unlikely	Moderate	Low	NA
88	Cultural	Dahwilly Homestead	Dahwilly Lane, Conargo	Conargo West	Unlikely	Moderate	Low	NA
87	Cultural	Coree Homestead	Jerilderie Road, Conargo	Conargo East	Unlikely	Moderate	Low	NA
86	Cultural	Warragoon Homestead	Warragoon Road, Conargo	Conargo East	Unlikely	Moderate	Low	NA

85	Cultural	Tuppal Woolshed	Tocumwal Road, Conargo	Conargo East	Unlikely	Moderate	Low	NA	
84	Cultural	Tuppal Homestead	Tocumwal Road, Conargo	Conargo East	Unlikely	Moderate	Low	NA	
83	Cultural	Hartwood	Jerilderie Road, Conargo	Conargo East	Unlikely	Moderate	Low	NA	
67	Cultural	Gulpa Homestead	Cobb Highway Mathoura	Murray and Deniliquin	Unlikely	Moderate	Low	NA	
81	Cultural	Puckawidgee	Carrathool Road, Conargo	Conargo East	Unlikely	Moderate	Low	NA	
65	Cultural	Moira Homestead	Cobb Highway Mathoura	Murray and Deniliquin	Unlikely	Moderate	Low	NA	
78	Cultural	South Coree Hall	Mayrunga Road, Jerilderie	Jerilderie	Unlikely	Moderate	Low	NA	
77	Cultural	Old Coree	Conargo Road, Jerilderie	Jerilderie	Unlikely	Moderate	Low	NA	
76	Cultural	Yanco Homestead	Kidman Way, Jerilderie	Jerilderie	Unlikely	Moderate	Low	NA	
75	Cultural	Chippenham Park	Deniliquin	Murray and Deniliquin	Unlikely	Moderate	Low	NA	
74	Cultural	Mundiwa	Riverina Highway Deniliquin	Murray and Deniliquin	Unlikely	Moderate	Low	NA	
73	Cultural	Kylite	Finley Road Deniliquin	Murray and Deniliquin	Unlikely	Moderate	Low	NA	
72	Cultural	Warbreccan	Boundary Street Deniliquin	Murray and Deniliquin	Unlikely	Moderate	Low	NA	
70	Cultural	Peacocks, Yanga Shearing Shed, Yanga H.S.	Yanga National Park, Wakool	Wakool North-West	Unlikely	Moderate	Low	NA	
68	Cultural	Moroco West	Tocumwal Road Bullatale	Murray and Deniliquin	Unlikely	Moderate	Low	NA	
66	Cultural	Perricoota Homestead	Barham Road Moama	Murray and Deniliquin	Unlikely	Moderate	Low	NA	
82	Cultural	Quiamong	Conargo Road, Conargo	Conargo East	Unlikely	Moderate	Low	NA	

6	Environment	Fauna	Waugorah, North West Wakool	Wakool North-West	Likely	Major	Very High	2A	4
7	Environment	Fauna	Yanga NP, North West Wakool	Wakool North-West	Likely	Major	Very High	2A	4
8	Environment	Fauna	Tuppal State Forest Murray	Murray and Deniliquin	Likely	Major	Very High	2A	5
9	Environment	Fauna	Wakool River Tulla	Wakool South-East	Likely	Major	Very High	2A	5
10	Environment	Fauna	North West Jerilderie	Jerilderie	Likely	Major	Very High	2A	4
11	Environment	Fauna	Lake Poon Boon Koraleigh	Wakool North-West	Likely	Major	Very High	2A	4
13	Environment	Fauna	Moulamein Road Conargo West	Conargo West	Likely	Major	Very High	2A	5
12	Environment	Fauna	Moulamein Road Dhuragoon	Wakool South-East	Likely	Major	Very High	2A	4
2	Environment	Fauna	Conargo North East	Jerilderie	Likely	Major	Very High	2A	4
15	Cultural	Deniliquin State Forest	Memorial Drive Deniliquin State Forest	Murray and Deniliquin	Likely	Major	Very High	2A	6
16	Cultural	Guipa Island State Forest	Guipa Island State Forest	Murray and Deniliquin	Likely	Major	Very High	2A	6
19	Cultural	Yanga Nature Reserve	Yanga NP	Wakool North-West	Likely	Moderate	High	3A	6
20	Cultural	Mallan, Wakool	Swan Hill Road Mallan	Wakool North-West	Likely	Moderate	High	3A	6
14	Cultural	Werai State Forest	Werai State Forest Wakool South East	Wakool South-East	Likely	Major	Very High	2A	6
21	Cultural	Caldwell, Murray	Barham Road Caldwell	Murray and Deniliquin	Likely	Moderate	High	3A	6

22	Cultural	Moama, Murray	Thyra Road, Moama	Murray and Deniliquin	Likely	Moderate	High	3A	6
24	Cultural	Logie Brae, Jerilderie	Mayrunga Road Logie Brae	Jerilderie	Likely	Moderate	High	3A	6
23	Cultural	Forest Creek, Conargo	Jerilderie Road Conargo	Conargo East	Likely	Moderate	High	3A	6
79	Cultural	Willurah Homestead	Willurah Road, Conargo	Conargo East	Unlikely	Moderate	Low	NA	
91	Cultural	Peppin Merino Statue	Hay Road, Wanganella	Conargo East	Unlikely	Moderate	Low	NA	
90	Cultural	Old Morago	Old Marago Road, Conargo	Conargo West	Unlikely	Moderate	Low	NA	
89	Cultural	Murgha Homestead	Moulamein Road, Conargo	Conargo West	Unlikely	Moderate	Low	NA	
88	Cultural	Dahwilly Homestead	Dahwilly Lane, Conargo	Conargo West	Unlikely	Moderate	Low	NA	
87	Cultural	Coree Homestead	Jerilderie Road, Conargo	Conargo East	Unlikely	Moderate	Low	NA	
86	Cultural	Warragoon Homestead	Warragoon Road, Conargo	Conargo East	Unlikely	Moderate	Low	NA	
85	Cultural	Tuppall Woolshed	Tocumwal Road, Conargo	Conargo East	Unlikely	Moderate	Low	NA	
84	Cultural	Tuppall Homestead	Tocumwal Road, Conargo	Conargo East	Unlikely	Moderate	Low	NA	
83	Cultural	Hartwood	Jerilderie Road, Conargo	Conargo East	Unlikely	Moderate	Low	NA	
67	Cultural	Gulpa Homestead	Cobb Highway Mathoura	Murray and Deniliquin	Unlikely	Moderate	Low	NA	
81	Cultural	Puckawidgee	Carrathool Road, Conargo	Conargo East	Unlikely	Moderate	Low	NA	
65	Cultural	Moir Homestead	Cobb Highway Mathoura	Murray and Deniliquin	Unlikely	Moderate	Low	NA	
78	Cultural	South Coree Hall	Mayrunga Road, Jerilderie	Jerilderie	Unlikely	Moderate	Low	NA	
77	Cultural	Old Coree	Conargo Road, Jerilderie	Jerilderie	Unlikely	Moderate	Low	NA	

76	Cultural	Yanco Homestead	Kidman Way, Jerilderie	Jerilderie	Unlikely	Moderate	Low	NA	
75	Cultural	Chippenham Park	Deniliquin	Murray and Deniliquin	Unlikely	Moderate	Low	NA	
74	Cultural	Mundiwa	Riverina Highway Deniliquin	Murray and Deniliquin	Unlikely	Moderate	Low	NA	
73	Cultural	Kylite	Finley Road Deniliquin	Murray and Deniliquin	Unlikely	Moderate	Low	NA	
72	Cultural	Warbreccan	Boundary Street Deniliquin	Murray and Deniliquin	Unlikely	Moderate	Low	NA	
70	Cultural	Peacocks, Yanga Shearing Shed, Yanga H.S.	Yanga National Park, Wakool	Wakool North-West	Unlikely	Moderate	Low	NA	
68	Cultural	Moroco West	Tocumwal Road Bullatale	Murray and Deniliquin	Unlikely	Moderate	Low	NA	
66	Cultural	Perricoota Homestead	Barham Road Moama	Murray and Deniliquin	Unlikely	Moderate	Low	NA	
82	Cultural	Quiamong	Conargo Road, Conargo	Conargo East	Unlikely	Moderate	Low	NA	

Appendix 3 Treatment Register

No	Strategy	Priority	Action	Comment	Responsible Agency
1	Hazard Reduction	2A	Ploughing, Slashing, Grading or Grazing	Annual road maintenance, slashing of road verges	LGA, RTA, DPI
2	Community Education	2A	Publish media releases at start of fire season	Publish media releases on fire prevention & fire safety at start of and during fire season	RFS
3	Ignition Management	2A	Implement fire management notification during BFDP	Issue permits to burn Total Fire Ban notification to the public & RFS volunteers Advise public & RFS volunteers of BFDP dates FNSW implement solid fuel fire bans in SF during BFDP	NSWFB, RFS, DPI
4	Community Education	4	School visits	Schools contacted annually, visits on request to deliver FireWise message.	RFS
5	Preparedness	4	Property preparedness education	Displays at shows and events Deniliquin Show Deniliquin Ute Muster Barham Show Moama Southern 80	RFS
6	Hazard Reduction	N/A	Inspect and maintain nearby SFAZ if required	Mathoura, Bunnaloo, Conargo, Deniliquin, Wanganella, Moulamein, Wakool, Barham, Tooleybuc, Pretty Pine, Jerilderie, Railway Corridor adjacent to Mathoura & Wakool townships	DL, LGA

Appendix 4 MDA 1 to 7, Mid Murray Zone Overview Maps

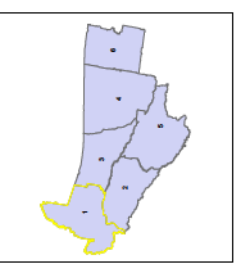
- Map 1 Wakool North West
- Map 2 Wakool South East
- Map 3 Conargo West
- Map 4 Murray and Deniliquin
- Map 5 Conargo East
- Map 6 Jerilderie
- Map 7 Mid Murray Fire History

Mid Murray Zone BFMC Bush Fire Risk Management Plan 2009

Walcott North West - Map Display Area
Map 1 of 6

The Bush Fire Risk Management Plan (BFRMP) has been prepared by the Mid Murray Zone Bush Fire Management Committee (BFMC) pursuant to section 152 of the Rural Fires Act 2002. The purpose of the BFRMP is to reduce the adverse impact of bush fires on life, property and the environment.

The BFRMP has been prepared in accordance with the requirements of the Rural Fires Act 2002, and is intended to provide a strategic framework for the management of bush fire risk in the Mid Murray Zone. The BFRMP is a living document and will be reviewed and updated as necessary.



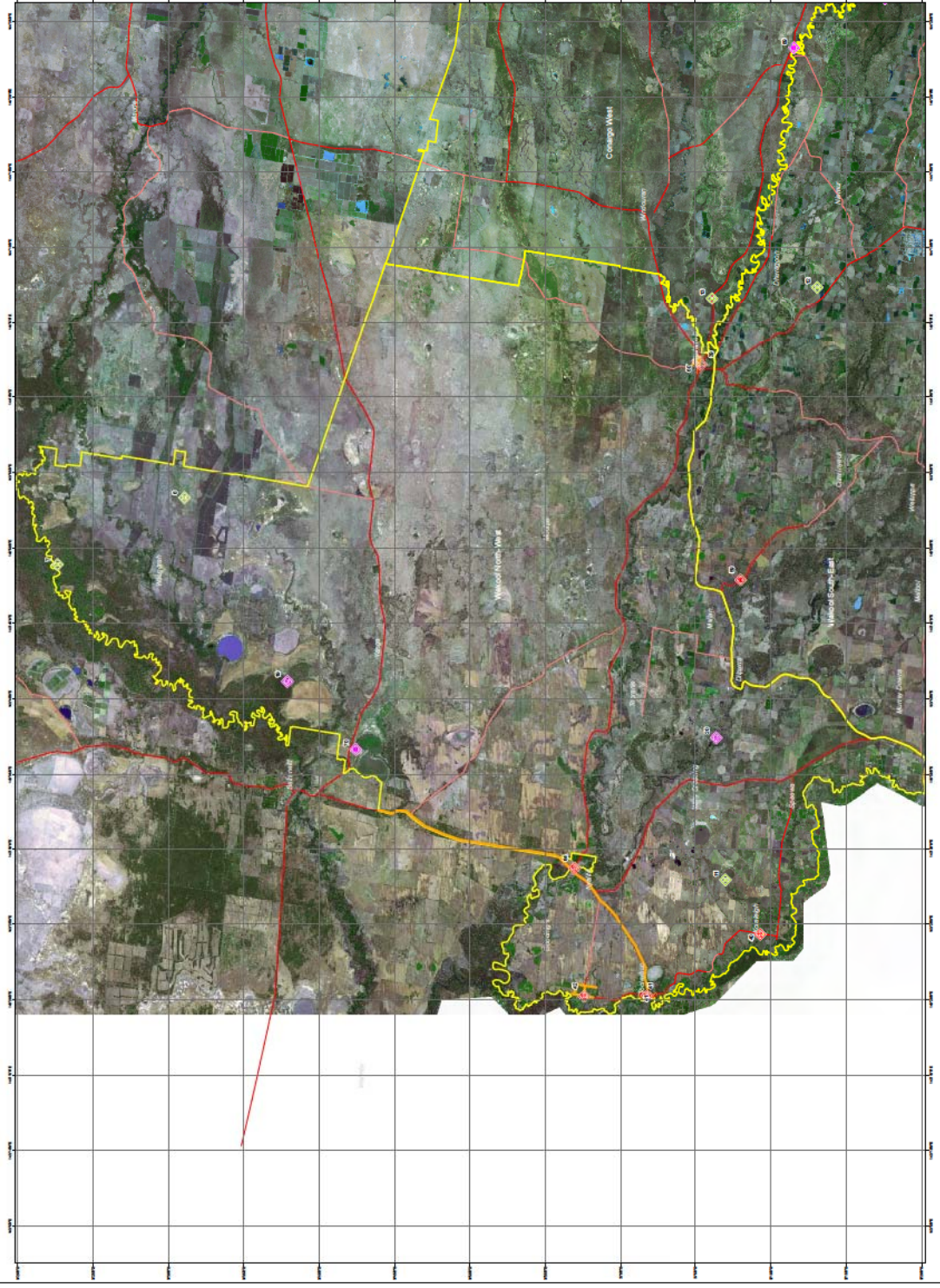
The Mid Murray Zone is defined as the area bounded by the following coordinates:

- Latitude: 34° 15' S to 34° 45' S
- Longitude: 138° 15' E to 139° 15' E

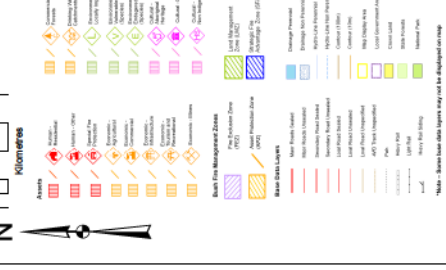
The BFRMP is a strategic document that provides a framework for the management of bush fire risk in the Mid Murray Zone. It is intended to provide a strategic framework for the management of bush fire risk in the Mid Murray Zone. The BFRMP is a living document and will be reviewed and updated as necessary.

Zone	Program	Representation	Zone	Management Strategy
Zone 1	Zone 1	Zone 1	Zone 1	Zone 1
Zone 2	Zone 2	Zone 2	Zone 2	Zone 2
Zone 3	Zone 3	Zone 3	Zone 3	Zone 3
Zone 4	Zone 4	Zone 4	Zone 4	Zone 4
Zone 5	Zone 5	Zone 5	Zone 5	Zone 5
Zone 6	Zone 6	Zone 6	Zone 6	Zone 6
Zone 7	Zone 7	Zone 7	Zone 7	Zone 7
Zone 8	Zone 8	Zone 8	Zone 8	Zone 8
Zone 9	Zone 9	Zone 9	Zone 9	Zone 9
Zone 10	Zone 10	Zone 10	Zone 10	Zone 10
Zone 11	Zone 11	Zone 11	Zone 11	Zone 11
Zone 12	Zone 12	Zone 12	Zone 12	Zone 12
Zone 13	Zone 13	Zone 13	Zone 13	Zone 13
Zone 14	Zone 14	Zone 14	Zone 14	Zone 14
Zone 15	Zone 15	Zone 15	Zone 15	Zone 15
Zone 16	Zone 16	Zone 16	Zone 16	Zone 16
Zone 17	Zone 17	Zone 17	Zone 17	Zone 17
Zone 18	Zone 18	Zone 18	Zone 18	Zone 18
Zone 19	Zone 19	Zone 19	Zone 19	Zone 19
Zone 20	Zone 20	Zone 20	Zone 20	Zone 20

Map Sheet	Map Sheet	Map Sheet	Map Sheet	Map Sheet	Map Sheet
10	11	12	13	14	15
16	17	18	19	20	21
22	23	24	25	26	27
28	29	30	31	32	33
34	35	36	37	38	39
40	41	42	43	44	45
46	47	48	49	50	51
52	53	54	55	56	57
58	59	60	61	62	63
64	65	66	67	68	69
70	71	72	73	74	75
76	77	78	79	80	81
82	83	84	85	86	87
88	89	90	91	92	93
94	95	96	97	98	99
100	101	102	103	104	105



ID	Treatment Strategy	Name	Operative Strategy
T1	Asset Protection	Asset Protection	Asset Protection
T2	Controlled Burning	Controlled Burning	Controlled Burning
T3	Fire Management	Fire Management	Fire Management
T4	Fire Management	Fire Management	Fire Management



Mid Murray Zone BFMIC Bush Fire Risk Management Plan 2009

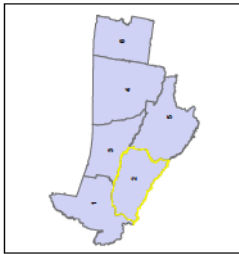
Wicklow South-East - Map Display Area
Map 2 of 6

The Bush Fire Risk Management Plan (BFRMP) has been prepared by the Mid Murray Zone Bush Fire Management Committee (BFRMC) pursuant to section 102 of the Rural Fires Act 1997. The purpose of the BFRMP is to reduce the adverse impact of bush fires on life, property and environment.

The purpose of this BFRMP is to:

- reduce the number of bush fires that cause damage to life, property and environment;
- reduce the number of bush fires that cause damage to life, property and environment;
- reduce the number of bush fires that cause damage to life, property and environment;
- reduce the number of bush fires that cause damage to life, property and environment;

This map area is part of the Mid Murray Zone BFRMP covering the Bush Fire Management Plan (BFRMP) for the Mid Murray Zone. The map area is the Bush Fire Management Plan (BFRMP) for the Mid Murray Zone. The map area is the Bush Fire Management Plan (BFRMP) for the Mid Murray Zone.



The map area is part of the Mid Murray Zone BFRMP covering the Bush Fire Management Plan (BFRMP) for the Mid Murray Zone. The map area is the Bush Fire Management Plan (BFRMP) for the Mid Murray Zone.

The map area is part of the Mid Murray Zone BFRMP covering the Bush Fire Management Plan (BFRMP) for the Mid Murray Zone. The map area is the Bush Fire Management Plan (BFRMP) for the Mid Murray Zone.

The map area is part of the Mid Murray Zone BFRMP covering the Bush Fire Management Plan (BFRMP) for the Mid Murray Zone. The map area is the Bush Fire Management Plan (BFRMP) for the Mid Murray Zone.

The map area is part of the Mid Murray Zone BFRMP covering the Bush Fire Management Plan (BFRMP) for the Mid Murray Zone. The map area is the Bush Fire Management Plan (BFRMP) for the Mid Murray Zone.

The map area is part of the Mid Murray Zone BFRMP covering the Bush Fire Management Plan (BFRMP) for the Mid Murray Zone. The map area is the Bush Fire Management Plan (BFRMP) for the Mid Murray Zone.

The map area is part of the Mid Murray Zone BFRMP covering the Bush Fire Management Plan (BFRMP) for the Mid Murray Zone. The map area is the Bush Fire Management Plan (BFRMP) for the Mid Murray Zone.

The map area is part of the Mid Murray Zone BFRMP covering the Bush Fire Management Plan (BFRMP) for the Mid Murray Zone. The map area is the Bush Fire Management Plan (BFRMP) for the Mid Murray Zone.

The map area is part of the Mid Murray Zone BFRMP covering the Bush Fire Management Plan (BFRMP) for the Mid Murray Zone. The map area is the Bush Fire Management Plan (BFRMP) for the Mid Murray Zone.

The map area is part of the Mid Murray Zone BFRMP covering the Bush Fire Management Plan (BFRMP) for the Mid Murray Zone. The map area is the Bush Fire Management Plan (BFRMP) for the Mid Murray Zone.

The map area is part of the Mid Murray Zone BFRMP covering the Bush Fire Management Plan (BFRMP) for the Mid Murray Zone. The map area is the Bush Fire Management Plan (BFRMP) for the Mid Murray Zone.

The map area is part of the Mid Murray Zone BFRMP covering the Bush Fire Management Plan (BFRMP) for the Mid Murray Zone. The map area is the Bush Fire Management Plan (BFRMP) for the Mid Murray Zone.

The map area is part of the Mid Murray Zone BFRMP covering the Bush Fire Management Plan (BFRMP) for the Mid Murray Zone. The map area is the Bush Fire Management Plan (BFRMP) for the Mid Murray Zone.

The map area is part of the Mid Murray Zone BFRMP covering the Bush Fire Management Plan (BFRMP) for the Mid Murray Zone. The map area is the Bush Fire Management Plan (BFRMP) for the Mid Murray Zone.

The map area is part of the Mid Murray Zone BFRMP covering the Bush Fire Management Plan (BFRMP) for the Mid Murray Zone. The map area is the Bush Fire Management Plan (BFRMP) for the Mid Murray Zone.

The map area is part of the Mid Murray Zone BFRMP covering the Bush Fire Management Plan (BFRMP) for the Mid Murray Zone. The map area is the Bush Fire Management Plan (BFRMP) for the Mid Murray Zone.

The map area is part of the Mid Murray Zone BFRMP covering the Bush Fire Management Plan (BFRMP) for the Mid Murray Zone. The map area is the Bush Fire Management Plan (BFRMP) for the Mid Murray Zone.

The map area is part of the Mid Murray Zone BFRMP covering the Bush Fire Management Plan (BFRMP) for the Mid Murray Zone. The map area is the Bush Fire Management Plan (BFRMP) for the Mid Murray Zone.

The map area is part of the Mid Murray Zone BFRMP covering the Bush Fire Management Plan (BFRMP) for the Mid Murray Zone. The map area is the Bush Fire Management Plan (BFRMP) for the Mid Murray Zone.

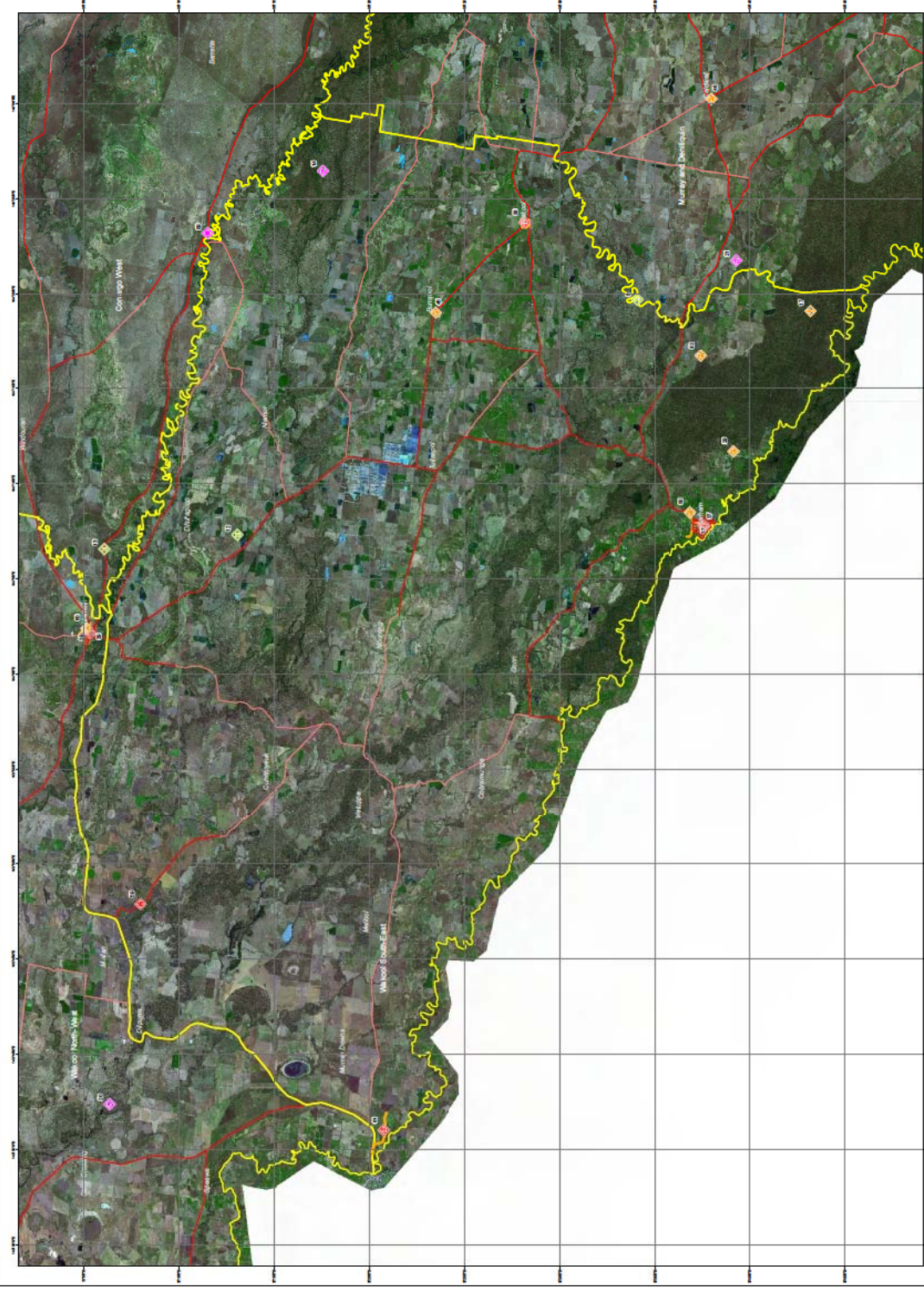
The map area is part of the Mid Murray Zone BFRMP covering the Bush Fire Management Plan (BFRMP) for the Mid Murray Zone. The map area is the Bush Fire Management Plan (BFRMP) for the Mid Murray Zone.

The map area is part of the Mid Murray Zone BFRMP covering the Bush Fire Management Plan (BFRMP) for the Mid Murray Zone. The map area is the Bush Fire Management Plan (BFRMP) for the Mid Murray Zone.

The map area is part of the Mid Murray Zone BFRMP covering the Bush Fire Management Plan (BFRMP) for the Mid Murray Zone. The map area is the Bush Fire Management Plan (BFRMP) for the Mid Murray Zone.

The map area is part of the Mid Murray Zone BFRMP covering the Bush Fire Management Plan (BFRMP) for the Mid Murray Zone. The map area is the Bush Fire Management Plan (BFRMP) for the Mid Murray Zone.

Address	Land Use	Building	Mid Murray Zone Bush Fire Management Plan (BFRMP)	Fire Risk	Fire Risk	Fire Risk
17	Commercial	Commercial	Low	Low	Low	Low
28	Commercial	Commercial	Low	Low	Low	Low
37	Commercial	Commercial	Low	Low	Low	Low
38	Commercial	Commercial	Low	Low	Low	Low
39	Commercial	Commercial	Low	Low	Low	Low
40	Commercial	Commercial	Low	Low	Low	Low
41	Commercial	Commercial	Low	Low	Low	Low



Code	Description	Notes	Reference
T1	Transportation	Highway, Road, Bridge, etc.	LOA, RFA, etc.
T2	Community Structure	Public buildings, schools, etc.	RFA, etc.
T3	Public Management	Public buildings, schools, etc.	RFA, etc.
T4	Community Structure	Public buildings, schools, etc.	RFA, etc.
T5	Public Management	Public buildings, schools, etc.	RFA, etc.
T6	Community Structure	Public buildings, schools, etc.	RFA, etc.
T7	Public Management	Public buildings, schools, etc.	RFA, etc.
T8	Community Structure	Public buildings, schools, etc.	RFA, etc.
T9	Public Management	Public buildings, schools, etc.	RFA, etc.
T10	Community Structure	Public buildings, schools, etc.	RFA, etc.

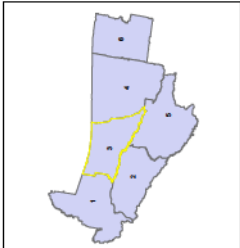
Map Legend

- Assets**
 - Highway
 - Road
 - Water
 - Power Lines
 - Telecom
 - Other
- Mid Murray Zone Bush Fire Management Plan (BFRMP)**
 - High Risk
 - Medium Risk
 - Low Risk
 - Very Low Risk
 - Unassessable
- Map Features**
 - Boundary
 - Water
 - Power Lines
 - Telecom
 - Other

Mid Murray Zone BFMC Bush Fire Risk Management Plan 2009

Conargo West - Map Display Area
Map 3 of 6

The Bush Fire Risk Management Plan (BFRMP) has been prepared by the Mid Murray Zone Bush Fire Management Committee (BFMC) pursuant to section 62 of the Rural Fires Act 2002. The BFRMP is a strategic document that outlines the BFMC's approach to bush fire risk management in the Mid Murray Zone. It is a key document in the BFMC's risk management framework and provides a clear and concise overview of the BFMC's bush fire risk management strategy.

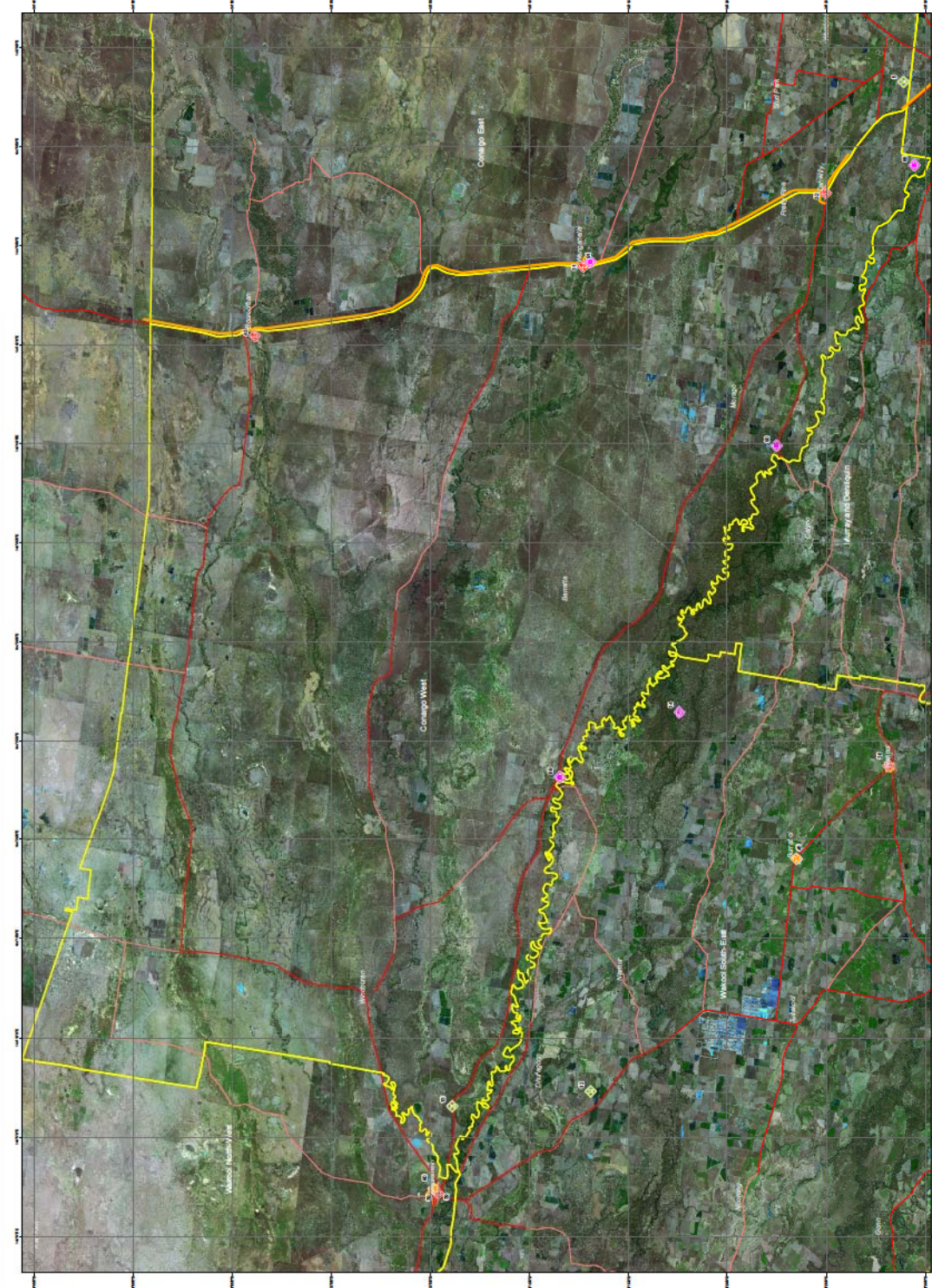


The BFRMP is a strategic document that outlines the BFMC's approach to bush fire risk management in the Mid Murray Zone. It is a key document in the BFMC's risk management framework and provides a clear and concise overview of the BFMC's bush fire risk management strategy.

The Mid Murray Zone BFMC is a statutory body established under the Rural Fires Act 2002. Its primary role is to manage bush fire risk in the Mid Murray Zone. The BFMC is responsible for developing and implementing bush fire risk management strategies, including the BFRMP. The BFMC also provides advice and support to local governments and landowners in the zone.

Zone	Program	Representation	Zone
Mid Murray Zone	Mid Murray Zone Bush Fire Risk Management Plan	Mid Murray Zone Bush Fire Management Committee	Mid Murray Zone
Wimmera Zone	Wimmera Zone Bush Fire Risk Management Plan	Wimmera Zone Bush Fire Management Committee	Wimmera Zone
North East Zone	North East Zone Bush Fire Risk Management Plan	North East Zone Bush Fire Management Committee	North East Zone
North West Zone	North West Zone Bush Fire Risk Management Plan	North West Zone Bush Fire Management Committee	North West Zone
South West Zone	South West Zone Bush Fire Risk Management Plan	South West Zone Bush Fire Management Committee	South West Zone
South East Zone	South East Zone Bush Fire Risk Management Plan	South East Zone Bush Fire Management Committee	South East Zone

Legend	Mid Murray Zone	Wimmera Zone	North East Zone	North West Zone	South West Zone	South East Zone
Zone Boundary	Red line	Red line	Red line	Red line	Red line	Red line
Sub-zone Boundary	Yellow line	Yellow line	Yellow line	Yellow line	Yellow line	Yellow line
Local Government Boundary	Blue line	Blue line	Blue line	Blue line	Blue line	Blue line
Highway	Thick grey line	Thick grey line	Thick grey line	Thick grey line	Thick grey line	Thick grey line
Road	Thin grey line	Thin grey line	Thin grey line	Thin grey line	Thin grey line	Thin grey line
Water	Blue area	Blue area	Blue area	Blue area	Blue area	Blue area
Forest	Green area	Green area	Green area	Green area	Green area	Green area
Urban	Grey area	Grey area	Grey area	Grey area	Grey area	Grey area



Symbol	Description
(Red circle with '1')	1D Bushfire Hazard
(Red circle with '2')	2D Bushfire Hazard
(Red circle with '3')	3D Bushfire Hazard
(Red circle with '4')	4D Bushfire Hazard
(Red circle with '5')	5D Bushfire Hazard
(Red circle with '6')	6D Bushfire Hazard
(Red circle with '7')	7D Bushfire Hazard
(Red circle with '8')	8D Bushfire Hazard
(Red circle with '9')	9D Bushfire Hazard
(Red circle with '10')	10D Bushfire Hazard
(Red circle with '11')	11D Bushfire Hazard
(Red circle with '12')	12D Bushfire Hazard
(Red circle with '13')	13D Bushfire Hazard
(Red circle with '14')	14D Bushfire Hazard
(Red circle with '15')	15D Bushfire Hazard
(Red circle with '16')	16D Bushfire Hazard
(Red circle with '17')	17D Bushfire Hazard
(Red circle with '18')	18D Bushfire Hazard
(Red circle with '19')	19D Bushfire Hazard
(Red circle with '20')	20D Bushfire Hazard
(Red circle with '21')	21D Bushfire Hazard
(Red circle with '22')	22D Bushfire Hazard
(Red circle with '23')	23D Bushfire Hazard
(Red circle with '24')	24D Bushfire Hazard
(Red circle with '25')	25D Bushfire Hazard
(Red circle with '26')	26D Bushfire Hazard
(Red circle with '27')	27D Bushfire Hazard
(Red circle with '28')	28D Bushfire Hazard
(Red circle with '29')	29D Bushfire Hazard
(Red circle with '30')	30D Bushfire Hazard
(Red circle with '31')	31D Bushfire Hazard
(Red circle with '32')	32D Bushfire Hazard
(Red circle with '33')	33D Bushfire Hazard
(Red circle with '34')	34D Bushfire Hazard
(Red circle with '35')	35D Bushfire Hazard
(Red circle with '36')	36D Bushfire Hazard
(Red circle with '37')	37D Bushfire Hazard
(Red circle with '38')	38D Bushfire Hazard
(Red circle with '39')	39D Bushfire Hazard
(Red circle with '40')	40D Bushfire Hazard
(Red circle with '41')	41D Bushfire Hazard
(Red circle with '42')	42D Bushfire Hazard
(Red circle with '43')	43D Bushfire Hazard
(Red circle with '44')	44D Bushfire Hazard
(Red circle with '45')	45D Bushfire Hazard
(Red circle with '46')	46D Bushfire Hazard
(Red circle with '47')	47D Bushfire Hazard
(Red circle with '48')	48D Bushfire Hazard
(Red circle with '49')	49D Bushfire Hazard
(Red circle with '50')	50D Bushfire Hazard

Symbol	Description
(Blue line)	Local Government Boundary
(Yellow line)	Sub-zone Boundary
(Red line)	Zone Boundary
(Thick grey line)	Highway
(Thin grey line)	Road
(Blue area)	Water
(Green area)	Forest
(Grey area)	Urban

Mid Murray Zone BFMC Bush Fire Risk Management Plan 2009

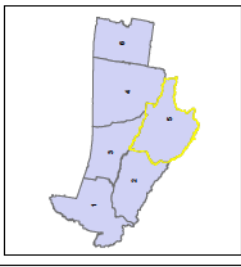
Murray and Catchlain - Map Display Area Map 6 of 6

This bush fire risk management plan (BFRMP) has been prepared for the Mid Murray Zone (MZY) and Catchlain Zone (CHL) of the Mid Murray Zone Bush Fire Management Committee (BFMC) pursuant to section 5(2) of the Bush Fire Management Act 1962.

The purpose of this BFRMP is to reduce the adverse impact of bush fires on the property and environment of the zone.

The map area part of the plan for the Mid Murray Zone (MZY) covering the Bush Fire Management Districts of Murray and Catchlain.

This map area part of the plan for the Mid Murray Zone (MZY) covering the Bush Fire Management Districts of Murray and Catchlain.



The map area of the plan for the Mid Murray Zone (MZY) covering the Bush Fire Management Districts of Murray and Catchlain.

The map area of the plan for the Mid Murray Zone (MZY) covering the Bush Fire Management Districts of Murray and Catchlain.

The map area of the plan for the Mid Murray Zone (MZY) covering the Bush Fire Management Districts of Murray and Catchlain.

The map area of the plan for the Mid Murray Zone (MZY) covering the Bush Fire Management Districts of Murray and Catchlain.

The map area of the plan for the Mid Murray Zone (MZY) covering the Bush Fire Management Districts of Murray and Catchlain.

The map area of the plan for the Mid Murray Zone (MZY) covering the Bush Fire Management Districts of Murray and Catchlain.

The map area of the plan for the Mid Murray Zone (MZY) covering the Bush Fire Management Districts of Murray and Catchlain.

The map area of the plan for the Mid Murray Zone (MZY) covering the Bush Fire Management Districts of Murray and Catchlain.

The map area of the plan for the Mid Murray Zone (MZY) covering the Bush Fire Management Districts of Murray and Catchlain.

The map area of the plan for the Mid Murray Zone (MZY) covering the Bush Fire Management Districts of Murray and Catchlain.

The map area of the plan for the Mid Murray Zone (MZY) covering the Bush Fire Management Districts of Murray and Catchlain.

The map area of the plan for the Mid Murray Zone (MZY) covering the Bush Fire Management Districts of Murray and Catchlain.

The map area of the plan for the Mid Murray Zone (MZY) covering the Bush Fire Management Districts of Murray and Catchlain.

The map area of the plan for the Mid Murray Zone (MZY) covering the Bush Fire Management Districts of Murray and Catchlain.

The map area of the plan for the Mid Murray Zone (MZY) covering the Bush Fire Management Districts of Murray and Catchlain.

The map area of the plan for the Mid Murray Zone (MZY) covering the Bush Fire Management Districts of Murray and Catchlain.

The map area of the plan for the Mid Murray Zone (MZY) covering the Bush Fire Management Districts of Murray and Catchlain.

The map area of the plan for the Mid Murray Zone (MZY) covering the Bush Fire Management Districts of Murray and Catchlain.

The map area of the plan for the Mid Murray Zone (MZY) covering the Bush Fire Management Districts of Murray and Catchlain.

The map area of the plan for the Mid Murray Zone (MZY) covering the Bush Fire Management Districts of Murray and Catchlain.

The map area of the plan for the Mid Murray Zone (MZY) covering the Bush Fire Management Districts of Murray and Catchlain.

The map area of the plan for the Mid Murray Zone (MZY) covering the Bush Fire Management Districts of Murray and Catchlain.

The map area of the plan for the Mid Murray Zone (MZY) covering the Bush Fire Management Districts of Murray and Catchlain.

The map area of the plan for the Mid Murray Zone (MZY) covering the Bush Fire Management Districts of Murray and Catchlain.

Map No.	Map Name	Map Scale	Map Date	Map Status
1	Zone BFRMP	1:250,000	2009	Final
2	Zone BFRMP	1:250,000	2009	Final
3	Zone BFRMP	1:250,000	2009	Final
4	Zone BFRMP	1:250,000	2009	Final
5	Zone BFRMP	1:250,000	2009	Final
6	Zone BFRMP	1:250,000	2009	Final
7	Zone BFRMP	1:250,000	2009	Final
8	Zone BFRMP	1:250,000	2009	Final
9	Zone BFRMP	1:250,000	2009	Final
10	Zone BFRMP	1:250,000	2009	Final
11	Zone BFRMP	1:250,000	2009	Final
12	Zone BFRMP	1:250,000	2009	Final
13	Zone BFRMP	1:250,000	2009	Final
14	Zone BFRMP	1:250,000	2009	Final
15	Zone BFRMP	1:250,000	2009	Final
16	Zone BFRMP	1:250,000	2009	Final
17	Zone BFRMP	1:250,000	2009	Final
18	Zone BFRMP	1:250,000	2009	Final
19	Zone BFRMP	1:250,000	2009	Final
20	Zone BFRMP	1:250,000	2009	Final
21	Zone BFRMP	1:250,000	2009	Final
22	Zone BFRMP	1:250,000	2009	Final
23	Zone BFRMP	1:250,000	2009	Final
24	Zone BFRMP	1:250,000	2009	Final
25	Zone BFRMP	1:250,000	2009	Final
26	Zone BFRMP	1:250,000	2009	Final
27	Zone BFRMP	1:250,000	2009	Final
28	Zone BFRMP	1:250,000	2009	Final
29	Zone BFRMP	1:250,000	2009	Final
30	Zone BFRMP	1:250,000	2009	Final
31	Zone BFRMP	1:250,000	2009	Final
32	Zone BFRMP	1:250,000	2009	Final
33	Zone BFRMP	1:250,000	2009	Final
34	Zone BFRMP	1:250,000	2009	Final
35	Zone BFRMP	1:250,000	2009	Final
36	Zone BFRMP	1:250,000	2009	Final
37	Zone BFRMP	1:250,000	2009	Final
38	Zone BFRMP	1:250,000	2009	Final
39	Zone BFRMP	1:250,000	2009	Final
40	Zone BFRMP	1:250,000	2009	Final

Zone	Name	Representation	Zone	
1	High Risk	Dark Red	10	Very Low Risk
2	Medium-High Risk	Red	11	Low-Medium Risk
3	Medium Risk	Orange	12	Low Risk
4	Medium-Low Risk	Light Orange	13	Very Low-Medium Risk
5	Low-Medium Risk	Light Red	14	Low Risk
6	Low Risk	Light Orange	15	Very Low-Medium Risk
7	Very Low-Medium Risk	Light Red	16	Low Risk
8	Very Low Risk	Light Orange	17	Very Low-Medium Risk
9	Low-Medium Risk	Light Red	18	Low Risk
10	Very Low-Medium Risk	Light Red	19	Very Low-Medium Risk
11	Low-Medium Risk	Light Red	20	Very Low-Medium Risk
12	Very Low-Medium Risk	Light Red	21	Very Low-Medium Risk
13	Very Low-Medium Risk	Light Red	22	Very Low-Medium Risk
14	Very Low-Medium Risk	Light Red	23	Very Low-Medium Risk
15	Very Low-Medium Risk	Light Red	24	Very Low-Medium Risk
16	Very Low-Medium Risk	Light Red	25	Very Low-Medium Risk
17	Very Low-Medium Risk	Light Red	26	Very Low-Medium Risk
18	Very Low-Medium Risk	Light Red	27	Very Low-Medium Risk
19	Very Low-Medium Risk	Light Red	28	Very Low-Medium Risk
20	Very Low-Medium Risk	Light Red	29	Very Low-Medium Risk
21	Very Low-Medium Risk	Light Red	30	Very Low-Medium Risk



Map 6 of 6

Scale: 1:250,000

North Arrow: True North

Scale Bar: 0, 2.5, 5, 7.5, 10 Kilometers

Map Legend:

- Asset**
 - High Voltage Power Lines
 - Major Road
 - Local Road
 - Private Road
 - Watercourse
 - Other
- Management Zone**
 - High Risk
 - Medium-High Risk
 - Medium Risk
 - Medium-Low Risk
 - Low-Medium Risk
 - Low Risk
 - Very Low-Medium Risk
 - Very Low Risk
- Management District**
 - Murray
 - Catchlain
- Other**
 - Boundary
 - Property
 - Other

Map Information Table:

Code	Description	Name	Operator (District)
T1	High Risk	High Risk	LAN, RTA, DPL (RTA)
T2	Medium-High Risk	Medium-High Risk	RTA (LAN)
T3	Medium Risk	Medium Risk	RTA (LAN)
T4	Medium-Low Risk	Medium-Low Risk	RTA (LAN)
T5	Low-Medium Risk	Low-Medium Risk	RTA (LAN)
T6	Low Risk	Low Risk	RTA (LAN)
T7	Very Low-Medium Risk	Very Low-Medium Risk	RTA (LAN)
T8	Very Low Risk	Very Low Risk	RTA (LAN)

Map 6 of 6

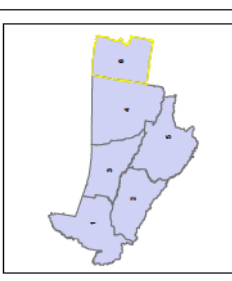
Mid Murray Zone BFMZ Bush Fire Risk Management Plan 2009

Jerrilder - Map Display Area
Map 6 of 6

The Bush Fire Risk Management Plan (BFRMP) has been prepared for the Mid Murray Zone BFMZ by the Management Committee (BFRMP) pursuant to section 102 of the Bush Fires Act 1954. The purpose of this BFRMP is to reduce the adverse impact of bush fires on life, property and environment.

The BFRMP is intended to:

- reduce the number of uncontrolled bush fires that occur during the bush fire season;
- reduce the number of fatalities and injuries to life, property and environment caused by bush fires;
- reduce the number of bush fires that are caused by inappropriate land use;
- reduce the number of bush fires that are caused by inappropriate land use;
- reduce the number of bush fires that are caused by inappropriate land use;



The Bush Fire Risk Management Plan (BFRMP) has been prepared for the Mid Murray Zone BFMZ by the Management Committee (BFRMP) pursuant to section 102 of the Bush Fires Act 1954. The purpose of this BFRMP is to reduce the adverse impact of bush fires on life, property and environment.

The Bush Fire Risk Management Plan (BFRMP) has been prepared for the Mid Murray Zone BFMZ by the Management Committee (BFRMP) pursuant to section 102 of the Bush Fires Act 1954. The purpose of this BFRMP is to reduce the adverse impact of bush fires on life, property and environment.

The Bush Fire Risk Management Plan (BFRMP) has been prepared for the Mid Murray Zone BFMZ by the Management Committee (BFRMP) pursuant to section 102 of the Bush Fires Act 1954. The purpose of this BFRMP is to reduce the adverse impact of bush fires on life, property and environment.

The Bush Fire Risk Management Plan (BFRMP) has been prepared for the Mid Murray Zone BFMZ by the Management Committee (BFRMP) pursuant to section 102 of the Bush Fires Act 1954. The purpose of this BFRMP is to reduce the adverse impact of bush fires on life, property and environment.

The Bush Fire Risk Management Plan (BFRMP) has been prepared for the Mid Murray Zone BFMZ by the Management Committee (BFRMP) pursuant to section 102 of the Bush Fires Act 1954. The purpose of this BFRMP is to reduce the adverse impact of bush fires on life, property and environment.

The Bush Fire Risk Management Plan (BFRMP) has been prepared for the Mid Murray Zone BFMZ by the Management Committee (BFRMP) pursuant to section 102 of the Bush Fires Act 1954. The purpose of this BFRMP is to reduce the adverse impact of bush fires on life, property and environment.

The Bush Fire Risk Management Plan (BFRMP) has been prepared for the Mid Murray Zone BFMZ by the Management Committee (BFRMP) pursuant to section 102 of the Bush Fires Act 1954. The purpose of this BFRMP is to reduce the adverse impact of bush fires on life, property and environment.

The Bush Fire Risk Management Plan (BFRMP) has been prepared for the Mid Murray Zone BFMZ by the Management Committee (BFRMP) pursuant to section 102 of the Bush Fires Act 1954. The purpose of this BFRMP is to reduce the adverse impact of bush fires on life, property and environment.

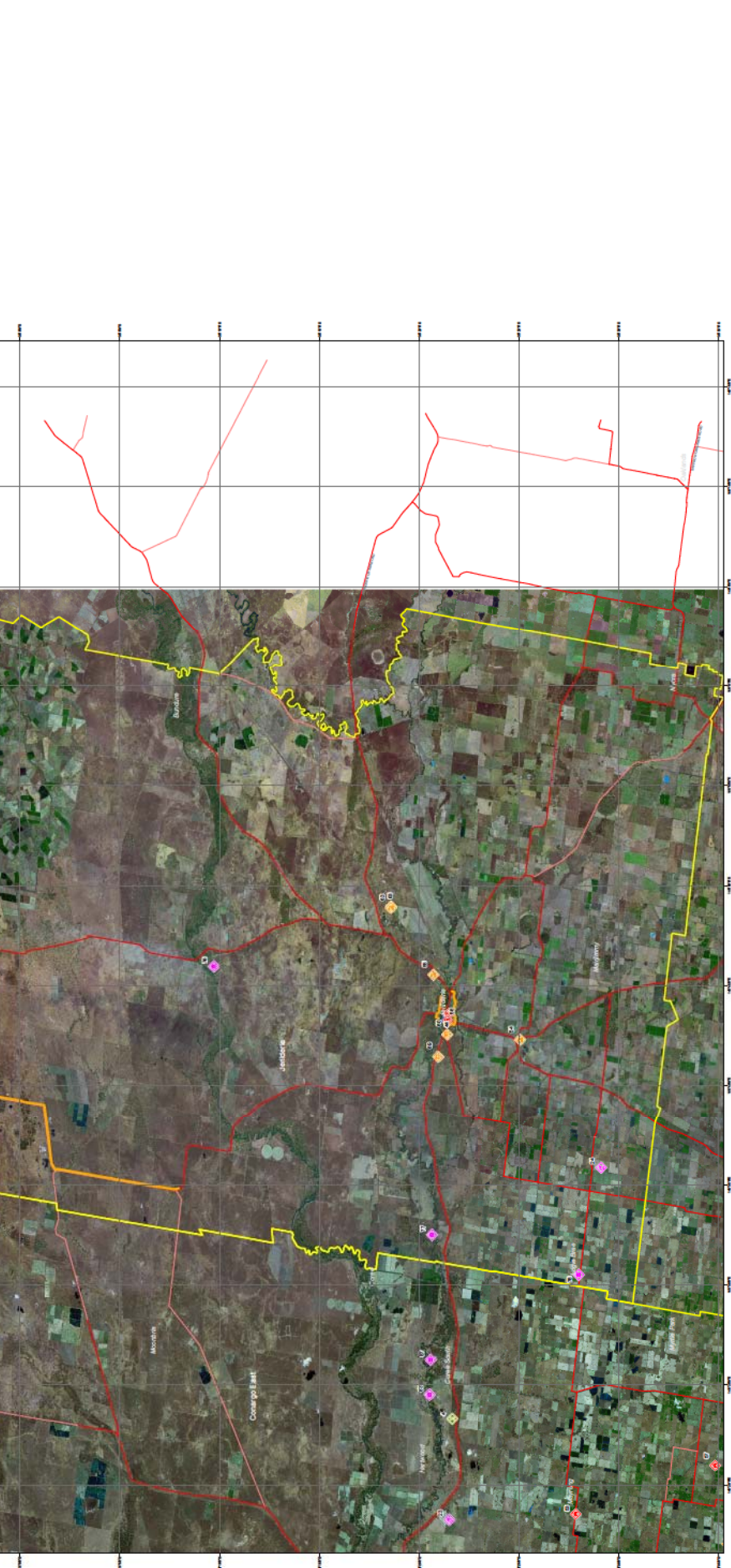
The Bush Fire Risk Management Plan (BFRMP) has been prepared for the Mid Murray Zone BFMZ by the Management Committee (BFRMP) pursuant to section 102 of the Bush Fires Act 1954. The purpose of this BFRMP is to reduce the adverse impact of bush fires on life, property and environment.

The Bush Fire Risk Management Plan (BFRMP) has been prepared for the Mid Murray Zone BFMZ by the Management Committee (BFRMP) pursuant to section 102 of the Bush Fires Act 1954. The purpose of this BFRMP is to reduce the adverse impact of bush fires on life, property and environment.

The Bush Fire Risk Management Plan (BFRMP) has been prepared for the Mid Murray Zone BFMZ by the Management Committee (BFRMP) pursuant to section 102 of the Bush Fires Act 1954. The purpose of this BFRMP is to reduce the adverse impact of bush fires on life, property and environment.

The Bush Fire Risk Management Plan (BFRMP) has been prepared for the Mid Murray Zone BFMZ by the Management Committee (BFRMP) pursuant to section 102 of the Bush Fires Act 1954. The purpose of this BFRMP is to reduce the adverse impact of bush fires on life, property and environment.

Map Sheet	Map Sheet	Map Sheet	Map Sheet	Map Sheet	Map Sheet	Map Sheet
10	11	12	13	14	15	16



Code	Description	Notes	Reference
T1	Uncontrolled bush fire	Uncontrolled bush fire	Section 102(1)(a)
T2	Controlled bush fire	Controlled bush fire	Section 102(1)(b)
T3	Public Management	Public Management	Section 102(1)(c)
T4	Community Protection	Community Protection	Section 102(1)(d)

Code	Description	Notes
1	High Risk	High Risk
2	Medium Risk	Medium Risk
3	Low Risk	Low Risk

Code	Description	Notes
1	High Risk	High Risk
2	Medium Risk	Medium Risk
3	Low Risk	Low Risk

Map 6 of 6



Mid Murray Fire History

NSW RURAL FIRE SERVICE
...for our community

A3 Scale 1 : 750,000

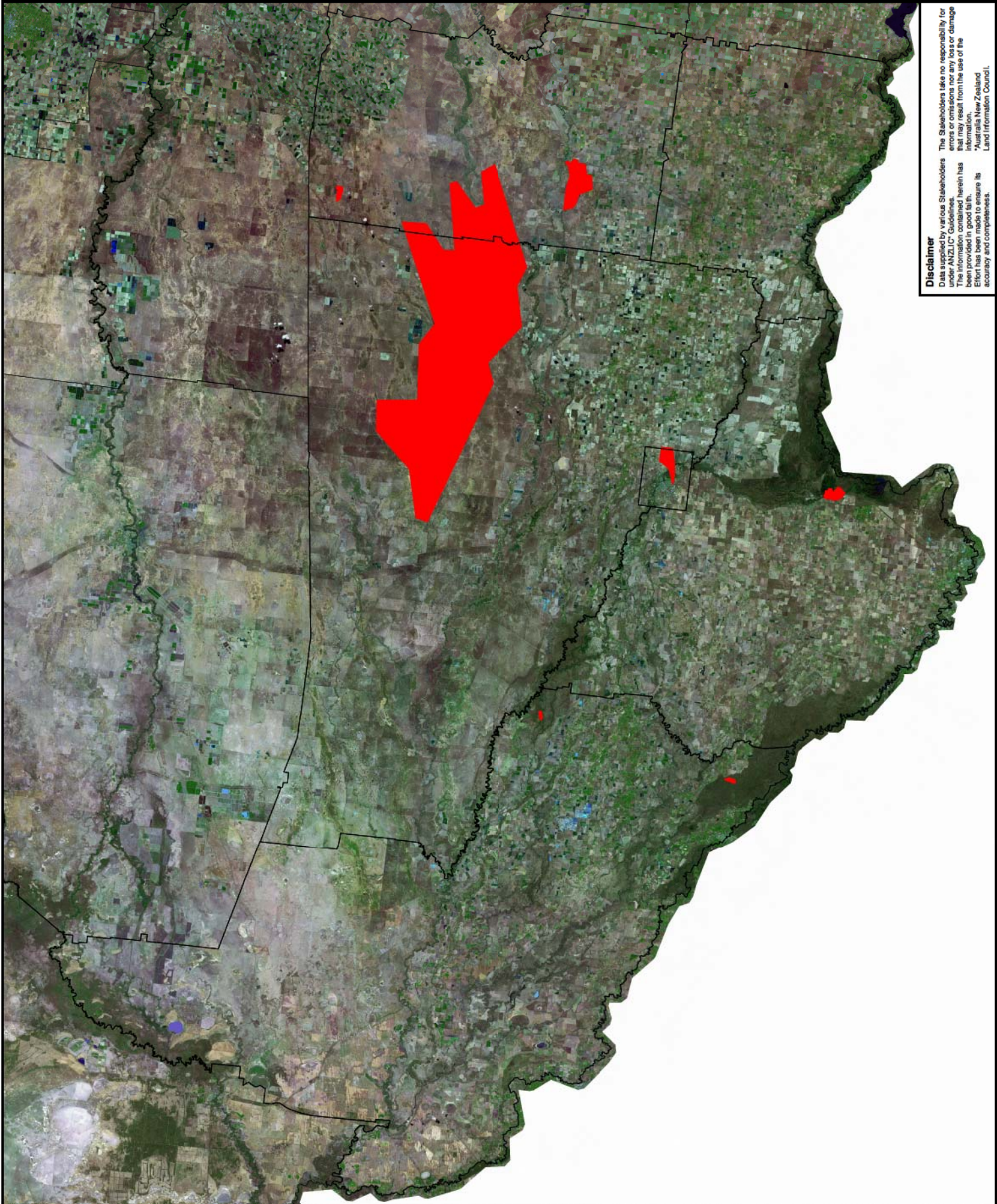
 Burnt Area



Map Details

Base Data: LPI Cadastre & Topo Database
Map Projection: Longitude / Latitude GDA94

Produced By: Doug Adamson



Disclaimer

Data supplied by various Stakeholders. The Stakeholders take no responsibility for errors or omissions nor any loss or damage under ANZLIC Guidelines. The information herein has been provided in good faith. Effort has been made to ensure its accuracy and completeness.
*Australia New Zealand Land Information Council.