



Lower Hunter BFMC Fuel Management Register & Asset protection Zones

LEGEND

- Bush Fire Management Committee (BFMC)
 - Bush Fire Risk Management Plan Focus Area
 - Previous Burnt Area (Last five years as of 02/06/2023)
- Planned Fuel Management Treatment**
- Asset Protection Zone (APZ)
 - Ignition Management Zone (IMZ)
 - Land Management Zone (LMZ)
 - Strategic Fire Advantage Zone (SFAZ)

Label Note
Since the initial development of the plan, burns labelled with an asterisk (*) have been completed or partially completed prior to the approval of the plan.

Map Description

This map shows the risk treatment strategies in the Lower Hunter area across a five year period.
The purpose of risk treatment in the BFRMP is to reduce the likelihood and / or harmful consequences of bush fire to the community and environment, through a process of selecting and implementing risk treatment options that modify the characteristics of the hazard, the community or the environment. Treatments are divided into 3 categories:

1. BFMC Wide - undertaken to reduce the overall bush fire risk within the BFMC area. Not shown on this map.
2. Focus Areas - groups of assets or areas in the landscape that the BFMC has identified as having significant or unacceptable risk. The BFMC has identified specific Treatment Objectives and Strategies to manage these risks.
3. Fuel Management - the reduction or modification of bush fire fuel with the intent of slowing the spread of bush fire, aiding firefighting operations and reducing the potential damage to community assets and values.

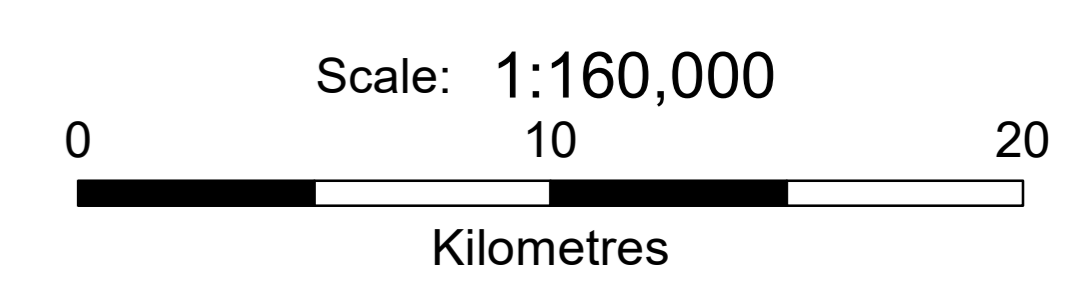
On this map:

- Areas where prescribed burning is planned are identified as strategic fire advantage zones, ignition management zones or land management zones
- Areas where vegetation management is more intensive, typically through mechanical clearing are identified as asset protection zones

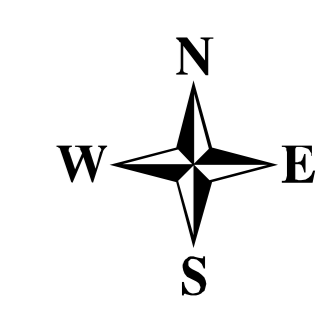
Some Focus Areas are not depicted by the symbology on the map. See the BFRMP for more information on all treatment strategies and detailed descriptions of each Focus Area.

WARNING INFORMATION

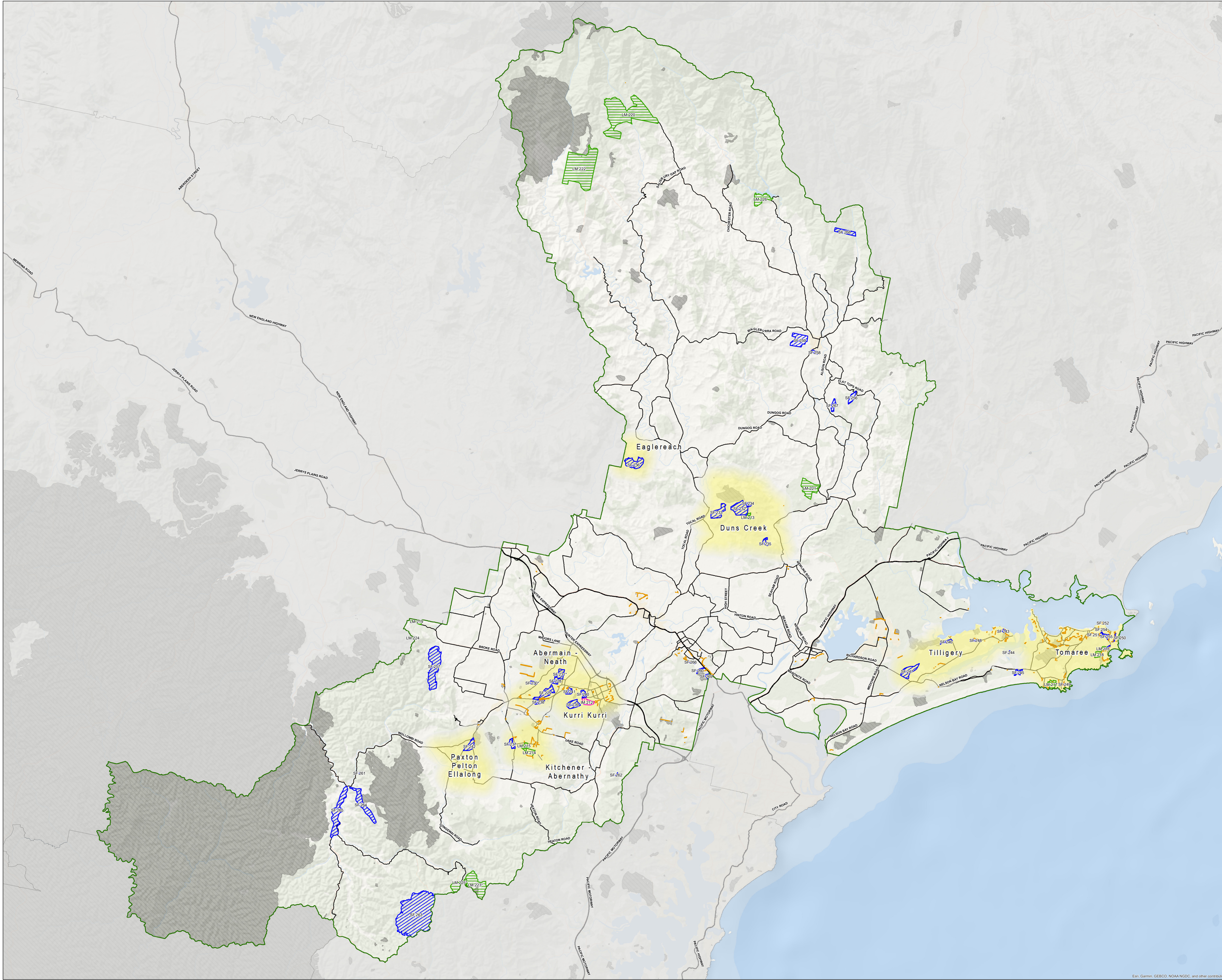
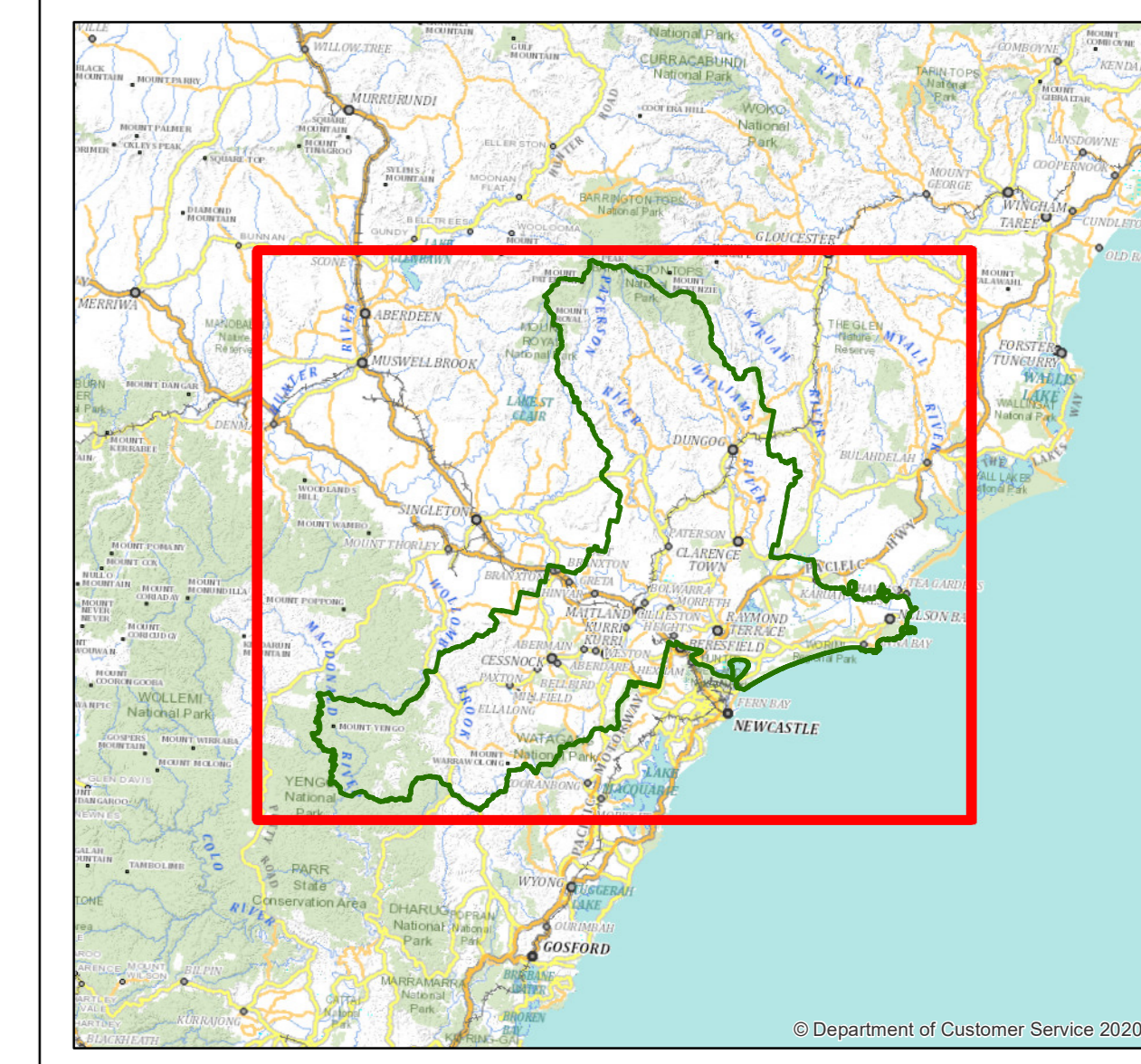
1. This map has been prepared by a NSW Government Agency ("the Agency") using data supplied to it by other agencies and entities.
2. The Agency has not verified or checked the data used to prepare this map. The map may contain errors and omissions. The Agency has not made any attempt to ground truth the map.
3. There will be a margin of error in relation to the location of features recorded on the map. The Agency is unable to specify the extent or magnitude of that margin of error.
4. Significant changes may have occurred, in the time between which the data was originally collected and the map produced; and ii. since the map was produced.
5. Users must, wherever possible, ground truth the map before relying on it or the accuracy of the map or the information recorded on the map for any purpose.
6. The Agency accepts no responsibility for any injury loss or damage arising from the use of this map or any errors or omissions in the information recorded on the map.



PRODUCTION INFORMATION
Base Data: © LPI, SPOT, SKM, OEH, Sensis, Katron
Map Projection: GDA 1984 NSW Lambert
Projection: Lambert Conformal Conic
Print Date 6/07/2023 5:24:57 PM
Produced by: NSW Rural Fire Service for the BFMC



KEY MAP



Ext. Gerni, GEBCO, NOAA NGDC, and other contributors