

# Bush Fire Preparation Map



## NARADHAN

### WORKS PROGRAM

Map Ref	Source	Strategy	Action	Responsible Agency	Target / Action Date
1	draft BFRMP	Community Education	Provide community fire protection and preparation advice	Rural Fire Service	annually & as required
2	draft BFRMP	Preparedness	Inspection prior to Bush Fire Danger Period	Rural Fire Service, Bland Shire Council, Office of Environment & Heritage, Forestry Corporation, Crown Lands	annually
3	draft BFRMP	Hazard Reduction	Maintenance / slashing of Asset Protection Zone (APZ) when overall fuel hazard reaches High	John Holland Group, Dept. of Education, Rural Fire Service, Office of Environment & Heritage, Crown Lands	annually & ongoing as required
4	draft BFRMP	Hazard Reduction	Manage and maintain Strategic Fire Advantage Zone	Bland Shire Council, John Holland Group, Rural Fire Service, Forestry Corporation, Local Land Services	annually
5	proposed	Hazard Reduction	Maintain APZ around network assets & buildings	Essential Energy, Telstra, Grain Corp, Dept. of Education, John Holland Group	annually & ongoing
6	proposed	Preparedness	Maintain APZ around dwellings in Resident Preparation Zone, & develop/maintain personal Bush Fire Survival Plan	Private property owners	establish / maintain
7	draft BFRMP	Community Education	Develop Community Protection Plan (CPP) Review with Bush Fire Risk Management Plan	Rural Fire Service	2014/15
8	draft BFRMP	Preparedness	Maintain access / boundary tracks	Forestry Corporation of NSW	annually & ongoing



Zone	Purpose	Suppression Objectives	Zone Characteristics
<b>Asset Protection Zone</b>	To protect human life, property and highly valued public assets and values.	To enable the safe use of Direct Attack suppression strategies within the zone. To minimise bush fire impacts on undefendable assets.	As per RFS document Standards for Asset Protection Zones.
<b>Strategic Fire Advantage Zone</b>	To provide strategic areas of fire protection advantage which will reduce the speed and intensity of bush fires, and reduce the potential for spot fire development. To aid containment of wildfires to existing management boundaries.	To improve the likelihood and safe use of Parallel Attack suppression strategies within the zone. Indirect Attack (back burning) in high to very high fire weather conditions within the zone. To reduce the likelihood of Crown fire development within the zone. and/or Spot fire ignition potential from the zone.	Zone width related to suppression objectives and dependant upon: -Topography -Aspect -Spotting propensity -Location of adjacent firebreaks -Mosaic pattern of treatment -Assess Overall Fuel Hazard (OFH) once vegetation communities reach minimum fire thresholds within this plan. Management practices should aim to achieve mosaic fuel reduction patterns so that the majority of the SFAZ has an OFH of less than high.
<b>Resident Preparation Zone</b>	To identify that residents / property owners have a vital role to play in bush fire risk management and that they are responsible for their own property preparedness.	To increase the preparedness of residents for bush fire and ensure that vegetation in close proximity to residential assets are adequately maintained. To provide a defensible space for residents / fire fighters and complement hazard reduction works carried out within Asset Protection Zones / Strategic Fire Advantage Zones.	Residents / property owners should strive to achieve a 'Fire-Safe' property as outlined in the illustration above. Concerns regarding the bush fire safety of neighbouring properties should be raised with the NSW Rural Fire Service.

**LEGEND**

- Proposed Asset Protection Zone
- Proposed Strategic Fire Advantage Zone
- Asset Protection Zone
- Strategic Fire Advantage Zone
- Proposed Hazard Reduction (HR)
- Resident Preparation Area
- Proposed Fire Trail
- Fire Trail

**PREPARE. ACT. SURVIVE.**

**BUSH FIRE INFORMATION LINE**  
**1800 NSW RFS**  
 1 8 0 0 6 7 9 7 3 7  
[www.rfs.nsw.gov.au](http://www.rfs.nsw.gov.au)

EMERGENCY 000

BUSH FIRE INFORMATION LINE

**PRODUCTION INFORMATION**

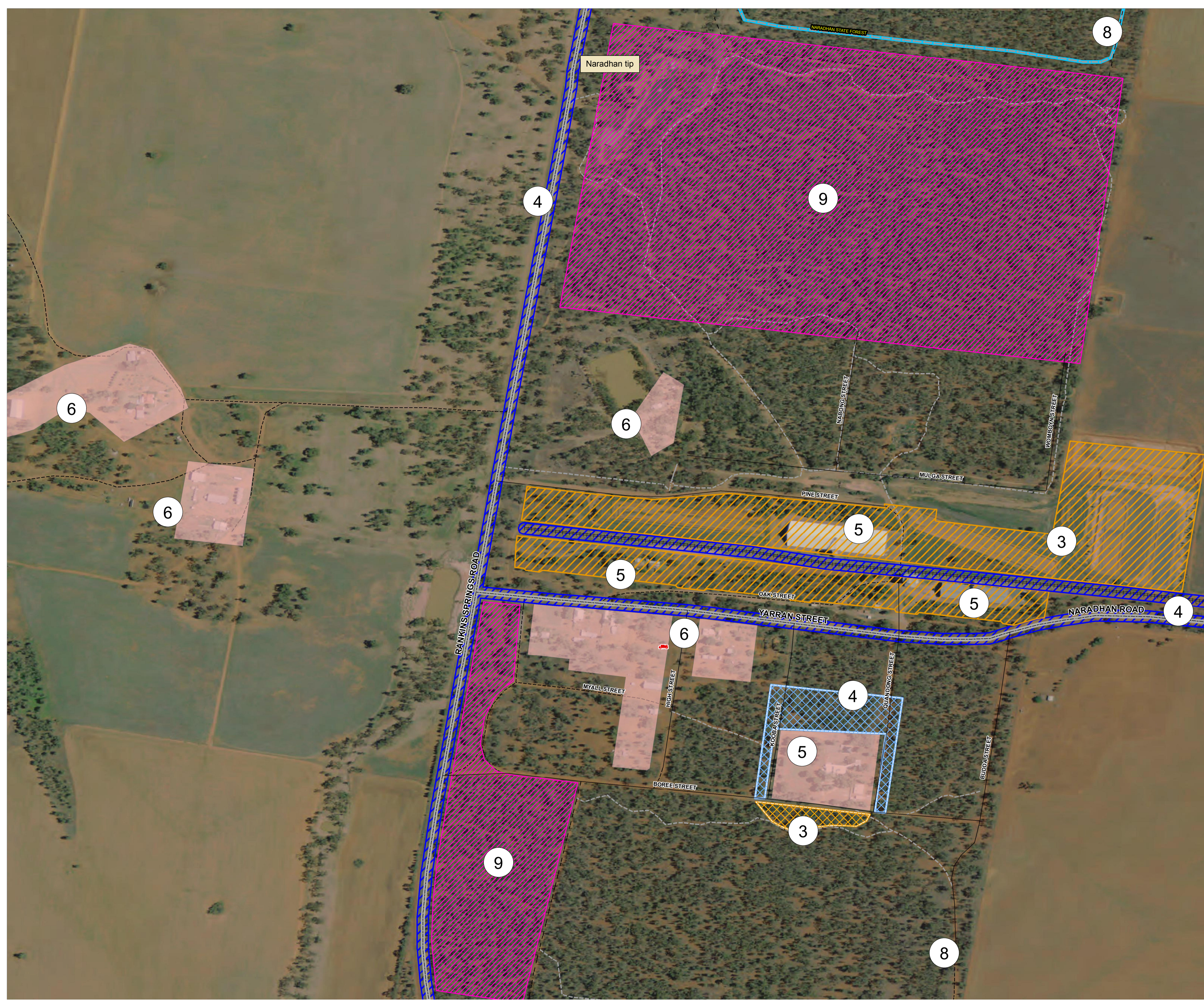
Base Data: LPMA Cadastre and Topo Database  
 Map Projection: GCS GDA 1994  
 Print Date / Time: 01/07/2016 1400 Hrs  
 Produced by: Andrew Nicholls, CSC South

0 0.15 0.3 Km

BPMC Approved: 23/03/2016, Bland-Temora

**WARNING INFORMATION**

- This map has been prepared by the NSW Rural Fire Service ("The Service") using data supplied to it by other agencies and entities. See the "Data Dictionary" for further information about the sources of this data.
- The Service has not verified or checked the data used to prepare this map. The map may contain errors and omissions. The Service has not made any attempt to ground truth the map.
- There will be a margin of error in relation to the location of features recorded on the map. The Service is unable to specify the extent or magnitude of that margin of error.
- Significant changes may have occurred:
  - In the time between which the data was originally collected and the map produced; and
  - Since the map was produced.
- Users must, wherever possible, ground truth the map before relying on it or the accuracy of the map or the information recorded on the map for any purpose.
- The Service accepts no responsibility for any injury loss or damage arising from the use of this map or any errors or omissions in the information recorded on the map.



**BUSH FIRE SURVIVAL PLAN**

**Have you prepared your Bush Fire Survival Plan?**

**Download a copy of the Bush Fire Survival Plan from [www.rfs.nsw.gov.au](http://www.rfs.nsw.gov.au)**