

# **Mosman North Sydney Willoughby Bush Fire Management Committee**

## **Bush Fire Risk Management Plan 2017-2022**



## **Table of Contents**

|  |           |
|--|-----------|
| <b><i>Glossary</i></b>   | <b>6</b>  |
| <b><i>Chapter 1. Introduction</i></b>                                  | <b>7</b>  |
| <b>1.1 Background</b>  | <b>7</b>  |
| <b>1.2 Aim and Objectives</b>  | <b>7</b>  |
| <b>1.3 Description of the Mosman North Sydney Willoughby BFMC Area</b> | <b>8</b>  |
| 1.3.1 Location and land tenure   | 8         |
| 1.3.2 Climate and bush fire season                                     | 8         |
| 1.3.3 Population and demographic information                           | 8         |
| 1.3.4 History of bush fire frequency and ignition cause                | 8         |
| <b><i>Chapter 2. Identifying and Assessing the Bush Fire Risk</i></b>  | <b>9</b>  |
| <b>2.1 Process</b>   | <b>9</b>  |
| <b>2.2 Communication and Consultation</b>                              | <b>9</b>  |
| <b>2.3 Identifying the Bush Fire Risk</b>                              | <b>10</b> |
| 2.3.1 Assets   | 10        |
| 2.3.2 Assessing the Bush Fire Risk - Consequence                       | 11        |
| 2.3.3 Assessing the Bush Fire Risk - Likelihood                        | 12        |
| 2.3.4 Identifying the level of risk                                    | 12        |
| 2.3.5 Evaluating the Bush Fire Risk                                    | 12        |
| 2.3.6 Prioritising Treatments  | 12        |
| 2.3.7 Risk Acceptability   | 13        |
| <b><i>Chapter 3. Treating the Risk</i></b>                             | <b>14</b> |
| <b>3.1 Bush Fire Management Zones</b>                                  | <b>14</b> |
| <b>3.2 BFMC Wide Treatments</b>  | <b>15</b> |
| <b>3.3 Asset Specific Treatments</b>                                   | <b>16</b> |
| <b>3.4 Fire Thresholds</b>   | <b>17</b> |
| <b>3.5 Annual Works Programs</b>                                       | <b>19</b> |
| <b>3.6 Implementation</b>  | <b>19</b> |
| <b><i>Chapter 4. Performance Monitoring and Reviewing</i></b>          | <b>20</b> |
| <b>4.1 Review</b>  | <b>20</b> |
| <b>4.2 Monitoring</b>  | <b>20</b> |
| <b>4.3 Reporting</b>   | <b>20</b> |
| <b>4.4 Performance Measurements</b>                                    | <b>20</b> |
| <b><i>Appendix 1 Community Participation Strategy</i></b>              | <b>22</b> |
| <b><i>Appendix 2 Asset Register</i></b>                                | <b>24</b> |
| <b><i>Appendix 3 Treatment Register</i></b>                            | <b>29</b> |
| <b><i>Appendix 4 Map Display Areas</i></b>                             | <b>49</b> |

## **List of Tables**

|   |    |
|---|----|
| <i>Table 1-1 Land Tenure</i>  | 8  |
| <i>Table 2-1 Risk acceptability and mitigation</i>  | 13 |
| <i>Table 3-1 Bush Fire Management Zones</i>   | 14 |
| <i>Table 3-2 Asset specific treatments used in the Mosman North Sydney Willoughby BFMC area</i> | 17 |
| <i>Table 3-3 Fire Thresholds for Vegetation Categories</i>                                      | 18 |

## **List of Figures**

|   |   |
|---|---|
| <i>Figure 2-1 Overview of the risk assessment process</i> ..... | 9 |
|---|---|

## **Mosman North Sydney Willoughby Bush Fire Management Committee Member Agencies**

Fire & Rescue NSW  
North Sydney Council  
Willoughby City Council  
Sydney Harbour Federation Trust  
Nature Conservation Council – NSW  
Department of Trade and Investment – Crown Lands

Office of Environment and Heritage - NPWS  
Mosman Council  
NSW Police  
Department of Defence  
Ausgrid  
Taronga Zoo



## Authorisation

In accordance with Part 3 Division 4 of the Rural Fires Act 1997, this Plan has been prepared by the Mosman North Sydney Willoughby Bush Fire Management Committee and has been endorsed at the BFMC meeting on 10<sup>th</sup> August 2017 for submission to the Bush Fire Coordinating Committee.

## Recommended



Cr. Roy Bendall

Chairperson  
Mosman North Sydney Willoughby Bush Fire Management Committee

## Approved



On behalf of the

NSW Bush Fire Coordinating Committee



## **Amendment List**

| <b>Amendment</b> |             | <b>Entered</b>   |             |
|------------------|-------------|------------------|-------------|
| <b>Number</b>    | <b>Date</b> | <b>Signature</b> | <b>Date</b> |
|                  |             |                  |             |
|                  |             |                  |             |
|                  |             |                  |             |
|                  |             |                  |             |
|                  |             |                  |             |
|                  |             |                  |             |
|                  |             |                  |             |
|                  |             |                  |             |
|                  |             |                  |             |
|                  |             |                  |             |
|                  |             |                  |             |

## Glossary

**Assets:** anything valued by the community which includes houses, crops, heritage buildings and places, infrastructure, the environment, businesses, and forests, that may be at risk from bush fire.

**Bush Fire:** a general term used to describe fire in vegetation, includes grass fire.

**Bush Fire Hazard:** the potential severity of a bush fire, which is determined by fuel load, fuel arrangement and topography under a given climatic condition.

**Bush Fire Risk:** the chance of a bush fire igniting, spreading and causing damage to the community or the assets they value.

**Bush Fire Risk Management:** a systematic process that provides a range of treatments which contribute to the wellbeing of communities and the environment, which suffer the adverse effects of wildfire/bush fire.

**Bush Fire Threat:** potential bush fire exposure of an asset due to the proximity and type of a hazard and the slope on which the hazard is situated.

**Consequence:** outcome or impact of a bush fire event.

**Fire Fighting Authorities:** the NSW Rural Fire Service, NSW Fire Brigades, the National Parks and Wildlife Service and Forests NSW.

**Likelihood:** the chance of a bush fire igniting and spreading.

**Major Bush Fire:** A bush fire which requires the attendance of multiple brigades, or causes damage to property or injury to one or more persons.

**Display area:** geographic area determined by the Bush Fire Management Committee which is used to provide a suitable area and scale for community participation and mapping display purposes.

**Recovery costs:** the capacity of an asset to recover from the impacts of a bush fire.

**Risk Acceptance:** an informed decision to accept the consequences and the likelihood of a particular risk.

**Risk Analysis:** a systematic process to understand the nature of and to deduce the level of risk.

**Risk Assessment:** the overall process of risk identification, risk analysis and risk evaluation.

**Risk Identification:** the process of determining what, where, when, why, and how something could happen.

**Risk Treatment:** the process of selection and implementation of measures to modify risk.

**Vulnerability:** the susceptibility of an asset to the impacts of bush fire.

## Chapter 1. Introduction

### 1.1 Background

Under the *Rural Fires Act 1997* the Bush Fire Coordinating Committee (BFCC) must constitute a Bush Fire Management Committee (BFMC) for each area in the State, which is subject to the risk of bush fires. Each BFMC is required to prepare and submit to the BFCC a draft Bush Fire Risk Management Plan (BFRMP).

A BFRMP is a strategic document that identifies community assets at risk and sets out a five-year program of coordinated multi-agency treatments to reduce the risk of bush fire to the assets. Treatments may include such things as hazard reduction burning, grazing, community education, fire trail maintenance and establishing community fireguard groups.

Annual programs to implement the treatments identified in this plan will be undertaken by the relevant land managers and fire fighting authorities.

In exercising its functions under the *Rural Fires Act 1997*, including the preparation of a draft bush fire risk management plan, the Mosman North Sydney Willoughby BFMC is required to have regard to the principles of ecologically sustainable development (ESD).

This document and the accompanying maps together form the BFRMP for the Mosman North Sydney Willoughby BFMC area.

This BFRMP has been prepared by the Mosman North Sydney Willoughby BFMC and covers both public and private lands. This BFRMP must be reviewed and updated within each successive five-year period from the constitution of the BFMC.

The BFCC recognises that climate change has the potential to increase bush fire risk. The risk assessment process applied in this BFRMP is based on current climatic conditions. The BFCC will monitor information on climate change and will modify the process when necessary.

### 1.2 Aim and Objectives

The **aim** of this BFRMP is to minimise the risk of adverse impact of bush fires on life, property and the environment.

The **objectives** of this BFRMP are to:

- reduce the number of human-induced bush fire ignitions that cause damage to life, property and the environment;
- manage fuel to reduce the rate of spread and intensity of bush fires, while minimising environmental/ecological impacts;
- reduce the community's vulnerability to bush fires by improving its preparedness; and
- effectively contain fires with a potential to cause damage to life, property and the environment.

## **1.3 Description of the Mosman North Sydney Willoughby BFMC Area**

### **1.3.1 Location and land tenure**

The Mosman North Sydney Willoughby BFMC area occupies the eastern portion of Sydney Harbour's lower north shore, the western side of Middle Harbour and includes the Local Government Areas of Mosman Council, North Sydney Council and Willoughby City Council.

The area covered by the Mosman North Sydney Willoughby BFMC is 4165 hectares and includes the land tenures outlined in Table 1.

**Table 1-1 Land Tenure**

| <b>Land Manager*</b>                    | <b>% of BFMC area</b> |
|---|-----------------------|
| National Parks & Wildlife Service (OEH) | 2.35%                 |
| Forests NSW                             | 0%                    |
| Trade and Investment – Crown Lands      | 6.91%                 |
| Local Government                        | 23.5%                 |
| Private                                 | 67.11%                |
| Other**                                 | 0.13%                 |

\*\* Department of Defence

\*\* Sydney Harbour Federation Trust (SHFT)

### **1.3.2 Climate and bush fire season**

The typical / average climate in the Mosman North Sydney Willoughby BFMC area is for uniform rainfall throughout the year, although higher rainfall can be experienced in the months of February to March. The Bush Fire season generally runs from October to March, in which high daytime temperatures are expected.

Prevailing weather conditions associated with the Bush Fire season in the Mosman North Sydney Willoughby BFMC area are strong North West winds, low humidity and high temperatures. These conditions combined with predominantly dry sclerophyll vegetation dramatically influence the behaviour of Bush Fires in the area. Although Bush Fires may occur at any time of the year, the highest probability of Bush Fires occurs in December and January.

### **1.3.3 Population and demographic information**

The population of the Mosman North Sydney Willoughby BFMC area is approximately 179466 people. The major population centres are Mosman, North Sydney, Chatswood and Willoughby.

### **1.3.4 History of bush fire frequency and ignition cause**

The Mosman North Sydney Willoughby BFMC area has on average 8 Bush Fires per year, of which none can be considered a major fire.

The main sources of ignition in the Mosman North Sydney Willoughby BFMC areas are deliberate ignitions, camp fires, fire by misadventure & lightning strikes.

## Chapter 2. Identifying and Assessing the Bush Fire Risk

### 2.1 Process

The Australia/New Zealand Standard ISO 31000:2009 Risk Management - Principles and guidelines was used as the basis for the risk assessment process. See Figure 2.1 for the steps involved. For a detailed description of the process undertaken see the Bush Fire Risk Management Planning Guidelines for Bush Fire Management Committees on the RFS website: [www.rfs.nsw.gov.au](http://www.rfs.nsw.gov.au).

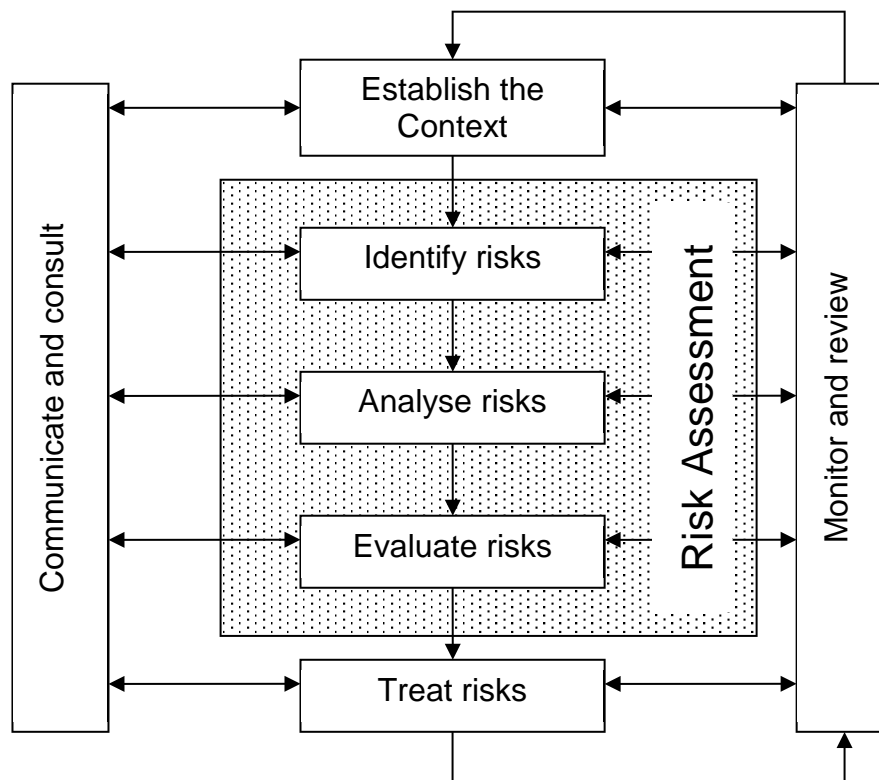


Figure 2-1 Overview of the risk assessment process

### 2.2 Communication and Consultation

Community participation is an integral part of risk management. The Community Participation Strategy involved developing and implementing a process to address the needs, issues and concerns of stakeholders within the BFMC area in regards to the BFRMP.

See Appendix 1 for the Community Participation Strategy used by the Mosman North Sydney Willoughby BFMC in preparing this BFRMP.

## **2.3 Identifying the Bush Fire Risk**

Identifying the level of bush fire risk firstly involved identifying important community assets considered to be at risk from bush fire in the Mosman North Sydney Willoughby BFMC area, and then assessing the likelihood and consequence ratings.

### **2.3.1 Assets**

BFMC members and the community, identified assets within the Mosman North Sydney Willoughby BFMC that they believed were at risk of bush fire.

The assets were divided into four asset types:

#### **Human settlement**

- Residential areas including urban bushland interface areas and rural properties;
- Special Fire Protection areas including schools, hospitals, nursing homes, and tourist facilities; and
- Other human settlement areas including commercial and industrial areas where distinct from major towns.
- Neighbourhood Safer Place (NSP) is defined by the *Rural Fires Act 1997* as *land or a building designated as a neighbourhood safer place under section 62C*. NSPs provide a place of last resort for people during a bush fire. All designated NSP locations for NSW are available at [www.rfs.nsw.gov.au](http://www.rfs.nsw.gov.au).

#### **Economic**

- Agricultural; e.g. major silos, regional saleyards, cropping/grazing land;
- Commercial/industrial e.g. major industries, waste treatment plants, sawmills;
- Infrastructure e.g. large power lines, gas and oil pipelines, railway lines, electricity substations, communication facilities;
- Tourist and recreational e.g. tourist sites and facilities, resorts, retreats;
- Mines;
- Commercial forests e.g. pine plantations, eucalypt plantations and commercial native forests; and
- Drinking water catchments.
- Military facilities

#### **Environmental**

- Threatened species, populations and ecological communities and Ramsar wetlands;
- Locally important species and ecological communities, such as species and ecological communities especially sensitive to fire.



## **Cultural**

- Aboriginal significance – Aboriginal places and items of significance;
- Non-indigenous heritage – places and items arising from the early occupation of NSW by European or other non-indigenous settlers; and
- Other cultural assets – community halls, clubs and recreational facilities.

See Appendix 2 for the full list of assets identified in the Mosman North Sydney Willoughby BFMC area. See maps 1-3 for the location of assets to be treated under this BFRMP

### **2.3.2 Assessing the Bush Fire Risk - Consequence**

Once the assets were identified, the consequence of a bush fire impacting on these assets was assessed.

See Appendix 2 for the consequence ratings assigned to each asset identified in the Mosman North Sydney Willoughby BFMC area.

The different asset types had different assessment processes used to determine the consequence. These processes are identified below.

## **Human settlement**

A potential fire behaviour model using vegetation type, slope and separation distance was used to produce a threat rating for human settlement assets. The vulnerability of the asset to a bush fire was also assessed and a rating assigned. These ratings were then used to assess the consequence of a bush fire impacting upon a human settlement asset.

Special Fire Protection (SFP) assets were considered inherently more vulnerable to bush fire due to mobility capacity, knowledge or other issues relating to their inhabitants, (e.g. the elderly, infirm, children or tourists) and therefore stricter requirements for vulnerability assessment and rating were applied. Due to circumstances surrounding NSPs and their use during a bush fire, stricter requirements for vulnerability assessment and rating will also apply to these assets.

## **Economic**

The level of economic impact e.g. local, regional or state, as well as the economic recovery costs (how long and complicated a financial recovery will be) of the asset were identified. These ratings were used to assess the consequence of a bush fire impacting upon an economic asset.

## **Environmental**

Environmental assets with known minimum fire threshold were assessed to determine if they were at risk of a bush fire within the 5 year life of the BFRMP using fire history *and fire threshold* data. Those environmental assets which were within or above the fire threshold were not assessed in the BFRMP, as the negative impact of a fire within the 5 year period was determined as being low and may even be of benefit to the asset and surrounding habitat.

The vulnerability of an environmental asset was determined by its conservation status and its geographic extent (distribution across the landscape). Vulnerability and potential impact of bush fire were used to assess the consequence of a bush fire impacting upon an environmental asset.

### **Cultural**

For non-indigenous historical, Aboriginal and other cultural assets a potential fire behaviour model using fuel load, slope and proximity was used to produce a threat rating. The physical vulnerability of the asset to a bush fire was also assessed. These ratings were then used to assess the consequence of a bush fire impacting upon a cultural asset.

### **2.3.3 Assessing the Bush Fire Risk - Likelihood**

For all asset types the likelihood of a bush fire occurring was assessed. This involves considering fire history, including ignition cause and patterns, known fire paths, access, containment potential and potential fire run (size of the vegetated area). See Appendix 2 for the likelihood ratings assigned to each asset identified in the Mosman North Sydney Willoughby BFMC area.

### **2.3.4 Identifying the level of risk**

The consequence and likelihood ratings were then used to identify the level of risk. See Appendix 2 for the risk ratings assigned to each asset identified in the Mosman North Sydney Willoughby BFMC area.

### **2.3.5 Evaluating the Bush Fire Risk**

Once the risk ratings for each asset were identified, they were evaluated to:

- a) confirm that risk levels identified in the risk analysis process are appropriate and reflect the relative seriousness of the bush fire risk;
- b) identify which assets require treatments; and
- c) identify treatment priorities.

### **2.3.6 Prioritising Treatments**

No organisation has limitless resources to deal with adverse risk. It is therefore necessary to define priorities. The bush fire risk ratings determined were used to prioritise the risk treatments, i.e. areas of extreme risk were considered first for treatment, then very high, then high then medium then low.

Treatments used within this five year Bush Fire Risk Management Plan can be applied annually, periodically throughout the life of the Plan, as deemed necessary due to changing risk or as a single targeted event.

### 2.3.7 Risk Acceptability

Risks below a certain level were assessed as not requiring treatment within the life of this plan Table 2-1. This is due to a combination of public education, general mitigation works and Fire agencies response times and resources availability. Within the Mosman North Sydney Willoughby BFMC area the level of acceptability is 'Medium'. Areas of medium and low risk are likely to be managed by routine procedures and so do not require a specific application of resources.

**Table 2-1** Risk acceptability and mitigation

| Risk Rating | Mitigation   |
|-------------|--|
| Extreme     | Application of specific and coordinated treatment strategies as defined within this Bush Fire Risk Management Plan                           |
| Very High   |  |
| High        |  |
| Medium      | Land owners / manages may apply the identified treatment strategy as part of their routine annual works, maintenance and inspection programs |
| Low         |  |

All NSPs for a BFMC area will require ongoing treatment by the applicable land owner to ensure that the asset remains viable as a place of last resort for people during a bush fire. Therefore, all NSP assets are allocated specific treatments in this Plan, regardless of the level of bush fire risk identified and the risk acceptability nominated by the Mosman North Sydney Willoughby BFMC.

## Chapter 3. Treating the Risk

### 3.1 Bush Fire Management Zones

Bush Fire Management Zones were identified within the Mosman North Sydney Willoughby BFMC area and mapped (see maps 1-3). These zones identify the fire management intent for a specific area. See Table 3.1 for descriptions of the zones and their purposes. The four categories of Bush Fire Management Zones are:

- Asset Protection Zone (APZ);
- Strategic Fire Advantage Zone (SFAZ);
- Land Management Zone (LMZ); and
- Fire Exclusion Zone (FEZ).

Some of these zones (usually Land Management Zones) may be further classified within this category by the land manager, e.g. LMZ -Heritage Management Zone (NPWS).

LMZs that have been identified as a polygon on the map will have defined management objectives. Below is a list of each identified LMZ and its associated management objectives.

**Table 3-1 Bush Fire Management Zones**

| Zone                                 | Purpose  | Suppression Objective(s)  | Zone characteristics   |
|--------------------------------------|--|---|--|
| <b>Asset Protection Zone</b>         | To protect human life, property and highly valued public assets and values.  | To enable the safe use of <b>Direct Attack</b> suppression strategies within the zone.<br>To minimise Bush Fire impacts on undefended assets.   | As per RFS document <i>Standards for Asset Protection Zones</i> .  |
| <b>Strategic Fire Advantage Zone</b> | To provide strategic areas of fire protection advantage which will reduce the speed and intensity of Bush Fires, and reduce the potential for spot fire development;<br>To aid containment of wildfires to existing management boundaries. | To improve the likelihood and safe use of:<br><br><b>Parallel Attack</b> suppression strategies within the zone.<br>and/or<br><b>Indirect Attack</b> (back burning) in high to very high fire weather conditions within the zone.<br><br>To reduce the likelihood of:<br>Crown fire development within the zone.<br>and/or<br>Spot fire ignition potential from the zone<br><br>. | Zone width related to suppression objectives and dependent upon:<br><ul style="list-style-type: none"> <li>• Topography</li> <li>• Aspect</li> <li>• Spotting propensity</li> <li>• Location of adjacent firebreaks</li> <li>• Mosaic pattern of treatment</li> </ul> Assess Overall Fuel Hazard (OFH) once vegetation communities reach minimum fire thresholds within this plan.<br>Management practices should aim to achieve mosaic fuel reduction patterns so that the majority of the SFAZ has an OFH of less than high. |
| <b>Land Management Zone</b>          | To meet relevant land management objectives in areas where APZs or SFAZs are not appropriate.  | As per the land management and fire protection objectives of the responsible land management agency.<br>To reduce the likelihood of spread of fires.<br>To undertake mosaic burning   | As appropriate to achieve land management e.g. heritage and/or fire protection e.g. broad scale mosaic burning objectives.   |
| <b>Fire Exclusion Zone</b>           | To exclude Bush Fires.   | N/A   | Variable dependant on size of fire sensitive area requiring protection.  |

NB: OFH refers the Overall Fuel Hazard Guide as described in the document published by (Dept. of Sustainability and Environment 3<sup>rd</sup> ed. 1999); State-wide procedures for assessment of fuel hazard will be developed in conjunction with the BFCC.

**Note:** All areas that are not mapped or described as APZs or SFAZs are considered as LMZs.

### **3.2 BFMC Wide Treatments**

BFMC wide treatments are activities which reduce the overall bush fire risk within the BFMC area and are undertaken on an ongoing basis as part of normal business. These treatments are not linked to specific assets in the BFRMP, rather they are applied across all or part of the BFMC area as designated by legislation or agency policy. BFMC wide treatments include the following:

- **Reviewing the bush fire prone land map**

These maps identify bush fire prone land and are used to trigger whether a development application is assessed using *Planning for Bush Fire Protection*<sup>1</sup>.

- **Ensuring developments in bush fire prone land comply with *Planning for Bush Fire Protection***

This assessment process requires new applications for development to include bush fire protection measures.

- **Using the Local Environment Plan/s (LEPs) to control developments in areas with a bush fire risk**

LEPs can be used to exclude development in extreme bush fire risk areas or where bush fire protection measures cannot be incorporated.

- **Varying the standard bush fire danger period as required**

In years where the weather is particularly adverse the bush fire danger period may be brought in early or extended. This is assessed every year by the BFMC.

- **Requiring permits during the bush fire danger period**

In the bush fire danger period a fire safety permit is required to light a fire in the open. Permits specify conditions such as firefighting equipment that must be on site, or restrict burns based on weather conditions.

- **Prosecution of arsonists/offenders**

Under the *Rural Fires Act 1997* persons may be prosecuted for breaching the conditions on a fire permit, lighting a fire during a Total Fire Ban, allowing fire to escape their property, or other breaches of the Act.

---

<sup>1</sup> NSW Rural Fire Service 2006 *Planning for Bush Fire Protection: A guide for councils, planners, fire authorities and developers*.

- **Investigation of bush fire cause**

All bush fires which do not have a known cause are investigated to identify how they started.

- **Normal fire suppression activities**

Responding to bush fire is a normal business activity for the fire fighting authorities.

- **Assessing and managing compliance with strategic fire fighting resource allocation provisions**

Strategic fire fighting resource allocation provisions is the process used to identify the number of stations, brigades and appliances required in an area, and considers members, training, assets and hazards.

- **Preparation of a S52 Operations Coordination Plan**

The Operations Coordination Plan is prepared biannually and sets out how coordinated fire fighting will occur. It includes specific operational restrictions on fire fighting techniques in certain areas, where fires will be managed from, and how agencies involved can communicate during operations.

- **Fire Management Plans or Plans of Management**

Some land management agencies have developed fire management plans or plans of management with specific fire or fuel management strategies, for example a Forests NSW Regional Fuel Management Risk Plan, a NPWS Fire Management Strategy. These publicly exhibited plans form the basis for operational fire planning on public parks, reserves and forests.

- **Bush Fire Hazard Complaints**

If someone is concerned about possible bush fire hazards on a neighbouring property or any other land, then this can be reported to the RFS Commissioner or their local RFS Fire Control Centre. The complaint will be investigated and may result in a notice being issued to the landowner or manager to reduce the hazard.

### ***3.3 Asset Specific Treatments***

There are five broad strategy groups available to treat the bush fire risk to assets identified in the BFRMP.

The types of asset specific treatments in each strategy group used in the Mosman North Sydney Willoughby BFMC areas are listed below. A full list of the treatment strategies in the Mosman North Sydney Willoughby BFMC area are in Appendix 3.



**Table 3-2** Asset specific treatments used in the Mosman North Sydney Willoughby BFMC area

| Strategy            | Targeted treatments used in the Mosman North Sydney Willoughby BFMC area  |
|---------------------|---|
| Ignition Management | Suspend fire generated activities on days of very high to extreme fire danger. Undertake patrols of National Parks during TOBANS. Close National Parks and managed bushland reserves as required.     |
| Hazard Reduction    | Manage fuel loads; bushland structure and accessibility<br>Perform annual maintenance along APZ and maintain annual Hazard Reduction Works Program<br>Manage land as per agency Fire Management Plans |
| Community Education | Manage CFU as per FRNSW policy<br>Community information, (Letterbox drops)  |
| Preparedness        | Inspect and maintain fire trail as required<br>Manage CFU as per FRNSW policy<br>Review Pre-incident plans<br>Undertake site inspections as required  |

### 3.4 Fire Thresholds

The vegetation in the Mosman North Sydney Willoughby BFMC area was classified into fire threshold categories (Table 3.3\*).

**Table 3-3 Fire Thresholds for Vegetation Categories**

| <b>Vegetation formation</b>                        | <b>Minimum SFAZ Threshold</b> | <b>Minimum LMZ Threshold</b> | <b>Maximum Threshold</b> | <b>Notes</b>  |
|--|-------------------------------|------------------------------|--------------------------|---|
| Rainforest   | NA                            | NA                           | NA                       | Fire should be avoided.   |
| Alpine complex                                     | NA                            | NA                           | NA                       | Fire should be avoided.   |
| Wet Sclerophyll forest (shrubby sub formation)     | 25                            | 30                           | 60                       | Crown fires should be avoided in the lower end of the interval range.   |
| Wet Sclerophyll forest (grassy sub formation)      | 10                            | 15                           | 50                       | Crown fires should be avoided in the lower end of the interval range.   |
| Grassy woodland                                    | 5                             | 8                            | 40                       | Minimum interval of 10 years should apply in the southern Tablelands area. Occasional intervals greater than 15 years may be desirable.   |
| Grassland  | 2                             | 3                            | 10                       | Occasional intervals greater than 7 years should be included in coastal areas. There was insufficient data to give a maximum interval; available evidence indicates maximum intervals should be approximately 10 years. |
| Dry sclerophyll forest (shrub/grass sub formation) | 5                             | 8                            | 50                       | Occasional intervals greater than 25 years may be desirable.  |
| Dry sclerophyll forest (shrub sub formation)       | 7                             | 10                           | 30                       | Occasional intervals greater than 25 years may be desirable.  |
| Heathlands   | 7                             | 10                           | 30                       | Occasional intervals greater than 20 years may be desirable.  |
| Freshwater wetlands                                | 6                             | 10                           | 35                       | Occasional intervals greater than 30 years may be desirable.  |
| Forested wetlands                                  | 7                             | 10                           | 35                       | Some intervals greater than 20 years may be desirable.  |
| Saline wetlands                                    | NA                            | NA                           | NA                       | Fire should be avoided.   |
| Semi-arid woodlands (grassy sub formation)         | 6                             | 9                            | No max                   | Not enough data for a maximum fire interval.  |
| Semi-arid woodlands (shrubby sub formation)        | 10                            | 15                           | No Max                   | Not enough data for a maximum fire interval.  |
| Arid shrublands (chenopod sub formation)           | NA                            | NA                           | NA                       | Fire should be avoided.   |
| Arid shrublands (acacia sub formation)             | 10                            | 15                           | No Max                   | Not enough data for a maximum fire interval.  |

### ***3.5 Annual Works Programs***

The land management agencies and fire fighting authorities responsible for implementing the treatments identified in this plan will include those treatments in their annual works programs detailing how, when, and where the required activities will be undertaken.

The Mosman North Sydney Willoughby BFMC has three annual works programs, these are;

1. Prescribed Burning (Broad area & Piles)
2. Mechanical and Manual works
3. Community Engagement / Education

### ***3.6 Implementation***

When the treatments identified in this BFRMP are implemented there are a number of issues that need to be considered by the responsible agency including environmental assessments and approvals, smoke management and prescribed burn plans.

## **Chapter 4. Performance Monitoring and Reviewing**

### **4.1 Review**

This BFRMP must be reviewed and updated within each successive five-year period from the constitution of the BFMC. The Mosman North Sydney Willoughby BFMC will also review this plan as necessary to account for any changes in context or risk. This may be triggered by a range of circumstances, including but not limited to:

- changes to the BFMC area, organisational responsibilities or legislation;
- changes to the bush fire risk in the area; or
- following a major fire event.

### **4.2 Monitoring**

The BFMC is required to monitor progress towards the completion of treatment works listed in the BFRMP, and the timeliness of the works.

### **4.3 Reporting**

The BFMC is required to report annually to the BFCC on its progress in implementing the bush fire risk management activities identified in this plan.

### **4.4 Performance Measurements**

State wide performance measurements which are linked to the BFRMP have been identified by the BFCC. All BFMCs must use these to monitor and report on their success in reducing the bush fire risk in their BFMC area.

## **Appendices**

Appendix 1 Community Participation Strategy

Appendix 2 Asset Register

Appendix 3 Treatment Register

Appendix 4 Maps Display Area

|       |              |
|-------|--------------|
| Map 1 | North Sydney |
| Map 2 | Mosman       |
| Map 3 | Willoughby   |

## Appendix 1 Community Participation Strategy

| Target Audience                             | Method of Communication   | Method of Notification  | Key messages/ purpose   | Resources   | Notes & Responsibility   |
|---|---|---|---|---|--|
| <b>Bushland-interface residents</b>         | Local Newspaper print advertisement.<br>(Mosman Daily)<br><br>Document link on Land Managers websites | Media Release, Mayoral Column, Letters to LGA Precincts, website, Flyer, Poster | Introduce BFRMP, community issues, discuss treatment options & community responsibilities | Media article, Flyers/posters, website, agency representatives, host webpage link, feedback email address | <ul style="list-style-type: none"> <li>FRNSW to draft print advertisement.</li> <li>Land Managers to place advertisement, and maintain host link on website</li> <li>FRNSW to collate feedback</li> </ul>                |
| <b>Broader Community</b>                    | Local Newspaper print advertisement.<br>(Mosman Daily)<br><br>Document link on Land Managers websites | Media Release, Mayoral Column, Letters to LGA Precincts, website, Flyer, Poster | Introduce BFRMP, community issues, discuss treatment options, community responsibilities  | Media article, Flyers/posters, website, agency representatives, host webpage link, feedback email address | <ul style="list-style-type: none"> <li>FRNSW to draft print advertisement.</li> <li>Land Managers to place advertisement, and maintain host link on website</li> <li>FRNSW to collate feedback</li> </ul>                |
| <b>Mayor, Councillor &amp; CEO Briefing</b> | Advising letter and explanation of the Bush Fire Risk Plan<br>Send hard copy of Draft Plan            | Advising Letter to CEO / General Manager  | Introduce BFRMP, Implications for agency  | Letter , host webpage link, feedback email address  | <ul style="list-style-type: none"> <li>FRNSW to draft &amp; send letter / copy of BFRMP to identified focus group</li> <li>Land Managers to maintain host link on website.</li> <li>FRNSW to collate feedback</li> </ul> |



**Annex A to  
Bush Fire Coordinating Committee  
Policy No. 1/2008**

| Target Audience                       | Method of Communication  | Method of Notification  | Key messages/ purpose   | Resources   | Notes & Responsibility  |
|---------------------------------------|--|---|---|---|---|
| <b>Staff Briefing</b>                 | Agency email and webpage link  | Email   | Introduce BFRMP, Implications for agency  | Email, host webpage link, feedback email address  | <ul style="list-style-type: none"> <li>Land Managers to maintain host link on website.</li> <li>Land Managers to send email.</li> </ul>   |
| <b>Interest Groups (Bushcare etc)</b> | Local Newspaper print advertisement. (Mosman Daily)<br><br>Document link on Land Managers websites | Media Release, Mayoral Column, Letters to LGA Precincts, website, Flyer, Poster | Introduce BFRMP, community issues, discuss treatment options, community responsibilities                                    | Media article, Flyers/posters, website, agency representatives, host webpage link, feedback email address | <ul style="list-style-type: none"> <li>FRNSW to draft print advertisement.</li> <li>Land Managers to place advertisement, and maintain host link on website</li> <li>FRNSW to collate feedback</li> </ul>     |
| <b>CFU</b>                            | FRNSW email CFU members  | FRNSW CFU Officer, to email CFU members and advise of BFRMP                     | Introduce BFRMP, community issues; discuss treatment options, community responsibilities, and CFU involvement and policies. | Letter , host webpage link, feedback email address  | <ul style="list-style-type: none"> <li>Land Managers to maintain host link on website.</li> <li>FRNSW BFO to send email to CFU Officer.</li> </ul>  |
| <b>Draft Exhibition</b>               | Static display material  | Newspaper advertisements  | Final public exhibition requirement   | Static display materials and copies of Draft BFRMP  | <ul style="list-style-type: none"> <li>Land Managers to host display</li> <li>Land Managers to place advertisement, and maintain host link on website</li> <li>FRNSW to collate feedback via email</li> </ul> |

## Appendix 2 Asset Register

| Asset ID | Priority | Asset name                                | Risk      | Likelihood     | Consequence  | Asset type       | Asset sub type           | Display area |
|----------|----------|---|-----------|----------------|--------------|------------------|--------------------------|--------------|
| 1        | 1A       | Parriwi Park Guide Hall                   | Extreme   | Almost certain | Catastrophic | Human Settlement | Other                    | MOSMAN       |
| 2        | 1B       | Castle Cove North Escarpment              | Extreme   | Likely         | Catastrophic | Human Settlement | Residential              | WILLOUGHBY   |
| 3        | 1B       | Middle Cove North Escarpment              | Extreme   | Likely         | Catastrophic | Human Settlement | Residential              | WILLOUGHBY   |
| 4        | 1B       | Castlecrag North Escarpment               | Extreme   | Likely         | Catastrophic | Human Settlement | Residential              | WILLOUGHBY   |
| 5        | 1B       | Northbridge North Escarpment              | Extreme   | Likely         | Catastrophic | Human Settlement | Residential              | WILLOUGHBY   |
| 6        | 1B       | Northbridge Southern Escarpment 1         | Extreme   | Likely         | Catastrophic | Human Settlement | Residential              | WILLOUGHBY   |
| 7        | 1B       | Parriwi Park Scout Hall                   | Extreme   | Likely         | Catastrophic | Human Settlement | Other                    | MOSMAN       |
| 8        | 1B       | Chatswood West 1                          | Extreme   | Likely         | Catastrophic | Human Settlement | Residential              | WILLOUGHBY   |
| 9        | 1B       | Taronga Zoo                               | Extreme   | Likely         | Catastrophic | Economic         | Tourist and Recreational | MOSMAN       |
| 10       | 1B       | HMAS Penguin                              | Extreme   | Likely         | Catastrophic | Economic         | Infrastructure           | MOSMAN       |
| 11       | 1B       | Chatswood West 2                          | Extreme   | Likely         | Catastrophic | Human Settlement | Residential              | WILLOUGHBY   |
| 12       | 1B       | Gleneaon High School                      | Extreme   | Likely         | Catastrophic | Human Settlement | Special Fire Protection  | WILLOUGHBY   |
| 13       | 1B       | Chowder Bay - Defence Fuel Installation   | Extreme   | Likely         | Catastrophic | Economic         | Infrastructure           | MOSMAN       |
| 14       | 1B       | Mowbray Scout Hall                        | Extreme   | Likely         | Catastrophic | Human Settlement | Special Fire Protection  | WILLOUGHBY   |
| 15       | 1B       | Foreshore properties below Edinburgh Road | Extreme   | Likely         | Catastrophic | Human Settlement | Residential              | WILLOUGHBY   |
| 16       | 1B       | Foreshore Artist Cottage" Edinburgh Road" | Extreme   | Likely         | Catastrophic | Human Settlement | Other                    | WILLOUGHBY   |
| 17       | 1B       | Blue Gum Scout Hall                       | Extreme   | Likely         | Catastrophic | Human Settlement | Special Fire Protection  | WILLOUGHBY   |
| 18       | 2A       | Imperial & Commonwealth Ave Residential   | Very High | Likely         | Major        | Human Settlement | Residential              | MOSMAN       |
| 19       | 2A       | Water Scouts Hall Mosman                  | Very High | Likely         | Major        | Human Settlement | Other                    | MOSMAN       |
| 20       | 2A       | Iluka Road Residential                    | Very High | Likely         | Major        | Human Settlement | Residential              | MOSMAN       |
| 21       | 2A       | Quakers Hat Park Residential              | Very High | Likely         | Major        | Human Settlement | Residential              | MOSMAN       |
| 22       | 2A       | Parriwi Park Residential                  | Very High | Likely         | Major        | Human Settlement | Residential              | MOSMAN       |
| 23       | 2A       | Balmoral East Residential                 | Very High | Likely         | Major        | Human Settlement | Residential              | MOSMAN       |
| 24       | 2A       | Balmoral West Residential                 | Very High | Likely         | Major        | Human Settlement | Residential              | MOSMAN       |
| 25       | 2A       | Plunkett Road Residential                 | Very High | Likely         | Major        | Human Settlement | Residential              | MOSMAN       |

**Annex A to  
Bush Fire Coordinating Committee  
Policy No. 1/2008**

|    |    |  |           |        |          |                  |                         |              |
|----|----|--|-----------|--------|----------|------------------|-------------------------|--------------|
| 26 | 2A | Lawry Plunket Residential                        | Very High | Likely | Major    | Human Settlement | Residential             | MOSMAN       |
| 27 | 2A | Quakers Hat North Residential                    | Very High | Likely | Major    | Human Settlement | Residential             | MOSMAN       |
| 28 | 2A | Quakers Hat South Residential                    | Very High | Likely | Major    | Human Settlement | Residential             | MOSMAN       |
| 29 | 2A | Mosman Bay Water Scouts                          | Very High | Likely | Major    | Human Settlement | Other                   | MOSMAN       |
| 30 | 2A | Castle Cove Southern Escarpment                  | Very High | Likely | Major    | Human Settlement | Residential             | WILLOUGHBY   |
| 31 | 2A | Middle Cove Southern Escarpment                  | Very High | Likely | Major    | Human Settlement | Residential             | WILLOUGHBY   |
| 32 | 2A | HMAS Penguin Single Structure                    | Very High | Likely | Major    | Economic         | Infrastructure          | MOSMAN       |
| 33 | 2A | Castlecrag North Escarpment 1                    | Very High | Likely | Major    | Human Settlement | Residential             | WILLOUGHBY   |
| 34 | 2A | Castlecrag Southern Escarpment                   | Very High | Likely | Major    | Human Settlement | Residential             | WILLOUGHBY   |
| 35 | 2A | Northbridge North/East Escarpment                | Very High | Likely | Major    | Human Settlement | Residential             | WILLOUGHBY   |
| 36 | 2A | Northbridge Southern Escarpment                  | Very High | Likely | Major    | Human Settlement | Residential             | WILLOUGHBY   |
| 37 | 2A | Tunks Park West                                  | Very High | Likely | Major    | Human Settlement | Residential             | NORTH SYDNEY |
| 38 | 2A | Naremburn North Escarpment                       | Very High | Likely | Major    | Human Settlement | Residential             | WILLOUGHBY   |
| 39 | 2A | Castlecrag Sea Scout Hall                        | Very High | Likely | Major    | Human Settlement | Special Fire Protection | WILLOUGHBY   |
| 40 | 2A | Church complex development                       | Very High | Likely | Major    | Economic         | Commercial              | WILLOUGHBY   |
| 41 | 2A | Chatswood West 3                                 | Very High | Likely | Major    | Human Settlement | Residential             | WILLOUGHBY   |
| 42 | 2A | Chatswood West 4                                 | Very High | Likely | Major    | Human Settlement | Residential             | WILLOUGHBY   |
| 43 | 2A | Northbridge Sea Scout Hall                       | Very High | Likely | Major    | Human Settlement | Special Fire Protection | WILLOUGHBY   |
| 44 | 2A | 8th Brigade Drill Hall / After School Child Care | Very High | Likely | Major    | Human Settlement | Special Fire Protection | MOSMAN       |
| 45 | 2A | Old Dance Hall Ruins                             | Very High | Likely | Major    | Cultural         | Non-Indigenous          | WILLOUGHBY   |
| 46 | 2A | Ausgrid Electrical Sub Station                   | Very High | Likely | Major    | Economic         | Infrastructure          | WILLOUGHBY   |
| 47 | 2A | Bradleys Head Public Precinct                    | Very High | Likely | Major    | Cultural         | Non-Indigenous          | MOSMAN       |
| 48 | 2A | Childcare Centre                                 | Very High | Likely | Major    | Human Settlement | Special Fire Protection | MOSMAN       |
| 49 | 2A | Lands Edge (School / 24 hour Accommodation)      | Very High | Likely | Major    | Human Settlement | Special Fire Protection | MOSMAN       |
| 50 | 3A | Raglan Street Residential                        | High      | Likely | Moderate | Human Settlement | Residential             | MOSMAN       |
| 51 | 3A | Curraghbeena Road Residential                    | High      | Likely | Moderate | Human Settlement | Residential             | MOSMAN       |
| 52 | 3A | Curlew Camp Road Residential                     | High      | Likely | Moderate | Human Settlement | Residential             | MOSMAN       |
| 53 | 3A | Governor's residence Middle Head                 | High      | Likely | Moderate | Human Settlement | Residential             | MOSMAN       |
| 54 | 3A | Endangered Flora HMAS Waterhen                   | High      | Likely | Moderate | Environment      | Vulnerable              | NORTH SYDNEY |

**Annex A to  
Bush Fire Coordinating Committee  
Policy No. 1/2008**

|    |    |   |        |          |              |                  |                          |              |
|----|----|---|--------|----------|--------------|------------------|--------------------------|--------------|
| 55 | 3A | Sergeant majors quarters (Rangers office)       | High   | Likely   | Moderate     | Human Settlement | Other                    | MOSMAN       |
| 56 | 3A | Barracks (Admin office)                         | High   | Likely   | Moderate     | Human Settlement | Other                    | MOSMAN       |
| 57 | 3A | Radio tower - Police                            | High   | Likely   | Moderate     | Economic         | Infrastructure           | MOSMAN       |
| 58 | 3A | Soldiers Institute                              | High   | Likely   | Moderate     | Human Settlement | Other                    | MOSMAN       |
| 59 | 3A | Tool shed                                       | High   | Likely   | Moderate     | Human Settlement | Other                    | MOSMAN       |
| 60 | 3A | Former guardhouse - now store and office        | High   | Likely   | Moderate     | Human Settlement | Other                    | MOSMAN       |
| 61 | 3A | Materials / equipment storage yard              | High   | Likely   | Moderate     | Economic         | Infrastructure           | MOSMAN       |
| 62 | 3A | Athol Hall                                      | High   | Likely   | Moderate     | Economic         | Commercial               | MOSMAN       |
| 63 | 3A | Morella Road Residential                        | High   | Likely   | Moderate     | Human Settlement | Residential              | MOSMAN       |
| 64 | 3A | Morella Road 2 Residential                      | High   | Likely   | Moderate     | Human Settlement | Residential              | MOSMAN       |
| 65 | 3A | Bradley's Residential                           | High   | Likely   | Moderate     | Human Settlement | Residential              | MOSMAN       |
| 66 | 3A | Rawson Park Tennis Centre                       | High   | Likely   | Moderate     | Economic         | Tourist and Recreational | MOSMAN       |
| 67 | 3A | Marina & Mosman Rowing Club                     | High   | Likely   | Moderate     | Economic         | Tourist and Recreational | MOSMAN       |
| 68 | 3A | Middle Head to Balmoral Walking Track           | High   | Likely   | Moderate     | Economic         | Infrastructure           | MOSMAN       |
| 69 | 3A | Burnt Orange Cafe                               | High   | Likely   | Moderate     | Economic         | Tourist and Recreational | MOSMAN       |
| 70 | 3A | Castle Cove Southern Escarpment 1               | High   | Likely   | Moderate     | Human Settlement | Residential              | WILLOUGHBY   |
| 71 | 3A | Castlecrag Boatshed/Marina                      | High   | Likely   | Moderate     | Economic         | Commercial               | WILLOUGHBY   |
| 72 | 3A | Northbridge Swimming Baths                      | High   | Likely   | Moderate     | Economic         | Tourist and Recreational | WILLOUGHBY   |
| 73 | 3A | Northbridge Sailing Club and Northbridge Marina | High   | Likely   | Moderate     | Economic         | Commercial               | WILLOUGHBY   |
| 74 | 3A | Tennis Valley                                   | High   | Likely   | Moderate     | Economic         | Tourist and Recreational | WILLOUGHBY   |
| 75 | 3A | Fatty Dawson Ruins                              | High   | Likely   | Moderate     | Cultural         | Non-Indigenous           | WILLOUGHBY   |
| 76 | 3A | Penfords Factory                                | High   | Likely   | Moderate     | Economic         | Commercial               | WILLOUGHBY   |
| 77 | 3C | Tunks Park East Residential                     | High   | Unlikely | Catastrophic | Human Settlement | Residential              | NORTH SYDNEY |
| 78 | 3C | Milray Ave Residential                          | High   | Unlikely | Catastrophic | Human Settlement | Residential              | NORTH SYDNEY |
| 79 | 3C | HMAS Waterhen                                   | High   | Unlikely | Catastrophic | Economic         | Infrastructure           | NORTH SYDNEY |
| 80 | 4  | Balls Head Quarantine Station Residents         | Medium | Unlikely | Major        | Human Settlement | Residential              | NORTH SYDNEY |
| 81 | 4  | Sirius and Rickard Roads Residential            | Medium | Unlikely | Major        | Human Settlement | Residential              | MOSMAN       |
| 82 | 4  | Royalist and Boyle Residential                  | Medium | Unlikely | Major        | Human Settlement | Residential              | MOSMAN       |
| 83 | 4  | Millet Road Residential                         | Medium | Unlikely | Major        | Human Settlement | Residential              | MOSMAN       |

**Annex A to  
Bush Fire Coordinating Committee  
Policy No. 1/2008**

|     |    |  |        |          |          |                  |                          |              |
|-----|----|--|--------|----------|----------|------------------|--------------------------|--------------|
| 84  | 4  | Dominion Crescent Residential                  | Medium | Unlikely | Major    | Human Settlement | Residential              | MOSMAN       |
| 85  | 4  | Camouflaged Fuel Tanks 3, 4 & 5                | Medium | Unlikely | Major    | Cultural         | Other                    | MOSMAN       |
| 86  | 4  | Pippies Child Care Centre                      | Medium | Unlikely | Major    | Human Settlement | Special Fire Protection  | MOSMAN       |
| 87  | 4  | Bay Street 2 Residential                       | Medium | Unlikely | Major    | Human Settlement | Residential              | MOSMAN       |
| 88  | 4  | Carrington Residential                         | Medium | Unlikely | Major    | Human Settlement | Residential              | MOSMAN       |
| 89  | 4  | Cross Street Residential                       | Medium | Unlikely | Major    | Human Settlement | Residential              | MOSMAN       |
| 90  | 4  | Folley Point Residential                       | Medium | Unlikely | Major    | Human Settlement | Residential              | NORTH SYDNEY |
| 91  | 4  | Aqueduct Tunks Park East                       | Medium | Likely   | Minor    | Economic         | Infrastructure           | NORTH SYDNEY |
| 92  | 4  | Burnt Orange Carpark                           | Medium | Likely   | Minor    | Economic         | Infrastructure           | MOSMAN       |
| 93  | 4  | Former ASOPA & 10 Terminal Buildings           | Medium | Unlikely | Major    | Human Settlement | Other                    | MOSMAN       |
| 94  | 4  | Endangered Flora HMAS Penguin                  | Medium | Likely   | Minor    | Environment      | Endangered               | MOSMAN       |
| 95  | 4  | Primrose Residential                           | Medium | Unlikely | Major    | Human Settlement | Residential              | NORTH SYDNEY |
| 96  | 4  | Brightmore Residential                         | Medium | Unlikely | Major    | Human Settlement | Residential              | NORTH SYDNEY |
| 97  | 4  | Wonga Rd Residential                           | Medium | Unlikely | Major    | Human Settlement | Residential              | NORTH SYDNEY |
| 98  | 4  | Rotary Men's Shed                              | Medium | Likely   | Minor    | Economic         | Tourist and Recreational | NORTH SYDNEY |
| 99  | 4  | Primrose Community Centre / Tennis Courts      | Medium | Likely   | Minor    | Economic         | Tourist and Recreational | NORTH SYDNEY |
| 100 | 4  | Brightmore Residential 2                       | Medium | Unlikely | Major    | Human Settlement | Residential              | NORTH SYDNEY |
| 101 | 4  | NSW Fisheries Complex                          | Medium | Unlikely | Major    | Economic         | Infrastructure           | NORTH SYDNEY |
| 102 | 4  | Chatswood West Tennis Club                     | Medium | Likely   | Minor    | Economic         | Tourist and Recreational | WILLOUGHBY   |
| 103 | 4  | Middle Head Road Residential                   | Medium | Unlikely | Major    | Human Settlement | Residential              | MOSMAN       |
| 104 | 4  | Headland Park Artist Precinct                  | Medium | Unlikely | Major    | Economic         | Commercial               | MOSMAN       |
| 105 | 4  | Gun shot alley                                 | Medium | Unlikely | Major    | Economic         | Commercial               | MOSMAN       |
| 106 | 4  | Georges Heights SHFT Buildings Complex         | Medium | Unlikely | Major    | Economic         | Commercial               | MOSMAN       |
| 107 | 4  | Gunners Barracks Tea Room                      | Medium | Likely   | Minor    | Economic         | Commercial               | MOSMAN       |
| 108 | 4  | Mowbray Primary School                         | Medium | Possible | Moderate | Human Settlement | Special Fire Protection  | WILLOUGHBY   |
| 109 | 4  | Northbridge park sport facilities & men's shed | Medium | Likely   | Minor    | Economic         | Tourist and Recreational | WILLOUGHBY   |
| 110 | NA | Woodley's Boat Builders                        | Low    | Unlikely | Moderate | Economic         | Commercial               | NORTH SYDNEY |
| 111 | NA | Tryon Ave Residential                          | Low    | Unlikely | Moderate | Human Settlement | Residential              | NORTH SYDNEY |
| 112 | NA | Park Avenue Residential                        | Low    | Unlikely | Moderate | Human Settlement | Residential              | MOSMAN       |

**Annex A to  
Bush Fire Coordinating Committee  
Policy No. 1/2008**

|     |    |   |     |          |          |                  |                          |              |
|-----|----|---|-----|----------|----------|------------------|--------------------------|--------------|
| 113 | NA | Shirley Road Residential                | Low | Unlikely | Moderate | Human Settlement | Residential              | NORTH SYDNEY |
| 114 | NA | Bridge End residential                  | Low | Unlikely | Moderate | Human Settlement | Residential              | NORTH SYDNEY |
| 115 | NA | Avenue Road Residential                 | Low | Unlikely | Moderate | Human Settlement | Residential              | MOSMAN       |
| 116 | NA | Bay Street Residential                  | Low | Unlikely | Moderate | Human Settlement | Residential              | MOSMAN       |
| 117 | NA | Raglan Street Residential               | Low | Unlikely | Moderate | Human Settlement | Residential              | MOSMAN       |
| 118 | NA | Balmoral Sea Scouts Hall                | Low | Unlikely | Minor    | Human Settlement | Other                    | MOSMAN       |
| 119 | NA | Middle Head Rd Ex-Naval Cottages        | Low | Unlikely | Moderate | Human Settlement | Residential              | MOSMAN       |
| 120 | NA | Chowder Bay Ex-Defence Buildings        | Low | Unlikely | Moderate | Cultural         | Non-Indigenous           | MOSMAN       |
| 121 | NA | Spit West Rowing Club                   | Low | Unlikely | Moderate | Economic         | Tourist and Recreational | MOSMAN       |
| 122 | NA | Armoured and beehive casemates          | Low | Unlikely | Moderate | Cultural         | Non-Indigenous           | MOSMAN       |
| 123 | NA | Outer forts                             | Low | Unlikely | Moderate | Cultural         | Non-Indigenous           | MOSMAN       |
| 124 | NA | Inner forts                             | Low | Unlikely | Moderate | Cultural         | Non-Indigenous           | MOSMAN       |
| 125 | NA | Tunks Park Kiosk Toilets Change Rooms   | Low | Unlikely | Minor    | Economic         | Infrastructure           | NORTH SYDNEY |
| 126 | NA | Boat repair workshop Cremorne           | Low | Unlikely | Minor    | Economic         | Commercial               | NORTH SYDNEY |
| 127 | NA | Former Coal Loader Complex              | Low | Unlikely | Moderate | Economic         | Tourist and Recreational | NORTH SYDNEY |
| 128 | NA | Georges Heights Lookout Tunnels & Forts | Low | Unlikely | Moderate | Cultural         | Non-Indigenous           | MOSMAN       |
| 129 | NA | NSP - Gore Hill Oval St Leonards        | Low | Unlikely | Moderate | Human Settlement | Other                    | WILLOUGHBY   |
| 130 | NA | NSP - Northbridge Plaza Carpark         | Low | Unlikely | Moderate | Human Settlement | Other                    | WILLOUGHBY   |
| 131 | NA | NSP - Chatswood Park Willoughby         | Low | Unlikely | Moderate | Human Settlement | Other                    | WILLOUGHBY   |
| 132 | NA | NSP - Willoughby Park                   | Low | Unlikely | Moderate | Human Settlement | Other                    | WILLOUGHBY   |
| 133 | NA | NSP - Willoughby Leisure Centre Carpark | Low | Unlikely | Moderate | Human Settlement | Other                    | WILLOUGHBY   |



## Appendix 3 Treatment Register

| Priority Risk Rating    | Asset ID | Asset Name                        | MDA        | Class            | Strategy            | Treatment ID | Action Description  | Responsible Agencies | Support Agencies | Year   | Year   | Year   | Year   | Year   |
|-------------------------|----------|-----------------------------------|------------|------------------|---------------------|--------------|---|----------------------|------------------|--------|--------|--------|--------|--------|
| <b>1A<br/>(Extreme)</b> | 1        | Parriwi Park Guide Hall           | MOSMAN     | Human Settlement | Hazard Reduction    | 2            | Undertake mechanical works and / or prescribed burning                              | LGA                  | FRNSW            | [1718] | [1819] | [1920] | [2021] | [2122] |
|                         |          |                                   |            |                  | Ignition Management | 3            | Restrict / close reserve from public access on days of Severe or higher fire danger | LGA                  | FRNSW Police     | [1718] | [1819] | [1920] | [2021] | [2122] |
| <b>1B<br/>(Extreme)</b> | 2        | Castle Cove North Escarpment      | WILLOUGHBY | Human Settlement | Hazard Reduction    | 12           | Undertake mechanical works and / or prescribed burning                              | LGA                  | FRNSW            | [1718] | [1819] | [1920] | [2021] | [2122] |
|                         |          |                                   |            |                  | Hazard Reduction    | 13           | Maintain established APZ's  | LGA                  |                  | [1718] | [1819] | [1920] | [2021] | [2122] |
|                         | 3        | Middle Cove North Escarpment      | WILLOUGHBY | Human Settlement | Hazard Reduction    | 12           | Undertake mechanical works and / or prescribed burning                              | LGA                  | FRNSW            | [1718] | [1819] | [1920] | [2021] | [2122] |
|                         |          |                                   |            |                  | Hazard Reduction    | 13           | Maintain established APZ's  | LGA                  |                  | [1718] | [1819] | [1920] | [2021] | [2122] |
|                         | 4        | Castlecrag North Escarpment       | WILLOUGHBY | Human Settlement | Hazard Reduction    | 12           | Undertake mechanical works and / or prescribed burning                              | LGA                  | FRNSW            | [1718] | [1819] | [1920] | [2021] | [2122] |
|                         |          |                                   |            |                  | Hazard Reduction    | 13           | Maintain established APZ's  | LGA                  |                  | [1718] | [1819] | [1920] | [2021] | [2122] |
|                         | 5        | Northbridge North Escarpment      | WILLOUGHBY | Human Settlement | Hazard Reduction    | 12           | Undertake mechanical works and / or prescribed burning                              | LGA                  | FRNSW            | [1718] | [1819] | [1920] | [2021] | [2122] |
|                         | 6        | Northbridge Southern Escarpment 1 | WILLOUGHBY | Human Settlement | Hazard Reduction    | 12           | Undertake mechanical works and / or prescribed burning                              | LGA                  | FRNSW            | [1718] | [1819] | [1920] | [2021] | [2122] |
|                         | 7        | Parriwi Park Scout Hall           | MOSMAN     | Human Settlement | Ignition Management | 7            | Restrict / close reserve from public access on days of Severe or higher fire danger | LGA                  | FRNSW Police     | [1718] | [1819] | [1920] | [2021] | [2122] |
|                         |          |                                   |            |                  | Hazard Reduction    | 8            | Undertake mechanical works and / or prescribed burning                              | LGA                  | FRNSW            | [1718] | [1819] | [1920] | [2021] | [2122] |

**Annex A to  
Bush Fire Coordinating Committee  
Policy No. 1/2008**

|  |    |   |            |                  |                     |    |  |          |                |        |        |        |        |        |
|--|----|---|------------|------------------|---------------------|----|--|----------|----------------|--------|--------|--------|--------|--------|
|  | 8  | Chatswood West 1                          | WILLOUGHBY | Human Settlement | Hazard Reduction    | 12 | Undertake mechanical works and / or prescribed burning | LGA      | FRNSW          | [1718] | [1819] | [1920] | [2021] | [2122] |
|  |    |   |            |                  | Hazard Reduction    | 13 | Maintain established APZ's                             | LGA      |                | [1718] | [1819] | [1920] | [2021] | [2122] |
|  | 9  | Taronga Zoo                               | MOSMAN     | Economic         | Community Education | 6  | Maintain Community Fire Unit as per FRNSW Policy       | FRNSW    |                | [1718] | [1819] | [1920] | [2021] | [2122] |
|  |    |   |            |                  | Preparedness        | 9  | Site inspection and review of Pre Incident Plan        | FRNSW    |                | [1718] | [1819] | [1920] | [2021] | [2122] |
|  |    |   |            |                  | Hazard Reduction    | 11 | Undertake mechanical works and / or prescribed burning | LLGA OEH | FRNSW          | [1718] | [1819] | [1920] | [2021] | [2122] |
|  | 10 | HMAS Penguin                              | MOSMAN     | Economic         | Hazard Reduction    | 4  | Maintain identified APZ                                | Defence  |                | [1718] | [1819] | [1920] | [2021] | [2122] |
|  |    |   |            |                  | Preparedness        | 10 | Implement Defence Bush Fire Management Plan            | Defence  | OEH FRNSW SHFT | [1718] | [1819] | [1920] | [2021] | [2122] |
|  | 11 | Chatswood West 2                          | WILLOUGHBY | Human Settlement | Hazard Reduction    | 12 | Undertake mechanical works and / or prescribed burning | LGA      | FRNSW          | [1718] | [1819] | [1920] | [2021] | [2122] |
|  |    |   |            |                  | Hazard Reduction    | 13 | Maintain established APZ's                             | LGA      |                | [1718] | [1819] | [1920] | [2021] | [2122] |
|  | 12 | Gleneaton High School                     | WILLOUGHBY | Human Settlement | Community Education | 14 | Undertake Annual Inspection and review ePIP            | FRNSW    | LGA            | [1718] | [1819] | [1920] | [2021] | [2122] |
|  |    |   |            |                  | Hazard Reduction    | 13 | Maintain established APZ's                             | LGA      |                | [1718] | [1819] | [1920] | [2021] | [2122] |
|  | 13 | Chowder Bay - Defence Fuel Installation   | MOSMAN     | Economic         | Preparedness        | 10 | Implement Defence Bush Fire Management Plan            | Defence  | OEH FRNSW SHFT | [1718] | [1819] | [1920] | [2021] | [2122] |
|  |    |   |            |                  | Preparedness        | 9  | Site inspection and review of Pre Incident Plan        | FRNSW    |                | [1718] | [1819] | [1920] | [2021] | [2122] |
|  | 14 | Mowbray Scout Hall                        | WILLOUGHBY | Human Settlement | Hazard Reduction    | 12 | Undertake mechanical works and / or prescribed burning | LGA      | FRNSW          | [1718] | [1819] | [1920] | [2021] | [2122] |
|  |    |   |            |                  | Hazard Reduction    | 13 | Maintain established APZ's                             | LGA      |                | [1718] | [1819] | [1920] | [2021] | [2122] |
|  | 15 | Foreshore properties below Edinburgh Road | WILLOUGHBY | Human Settlement | Hazard Reduction    | 12 | Undertake mechanical works and / or prescribed burning | LGA      | FRNSW          | [1718] | [1819] | [1920] | [2021] | [2122] |
|  |    |   |            |                  | Hazard Reduction    | 13 | Maintain established APZ's                             | LGA      |                | [1718] | [1819] | [1920] | [2021] | [2122] |

**Annex A to  
Bush Fire Coordinating Committee  
Policy No. 1/2008**

|                         |    |   |            |                  |                     |    |   |          |              |        |        |        |        |        |
|-------------------------|----|---|------------|------------------|---------------------|----|---|----------|--------------|--------|--------|--------|--------|--------|
|                         | 16 | Foreshore Artist Cottage" Edinburgh Road" | WILLOUGHBY | Human Settlement | Hazard Reduction    | 12 | Undertake mechanical works and / or prescribed burning                              | LGA      | FRNSW        | [1718] | [1819] | [1920] | [2021] | [2122] |
|                         | 17 | Blue Gum Scout Hall                       | WILLOUGHBY | Human Settlement | Hazard Reduction    | 12 | Undertake mechanical works and / or prescribed burning                              | LGA      | FRNSW        | [1718] | [1819] | [1920] | [2021] | [2122] |
| <b>2A<br/>Very High</b> | 18 | Imperial & Commonwealth Ave Residential   | MOSMAN     | Human Settlement | Hazard Reduction    | 19 | Undertake mechanical - mowing / slashing of APZ                                     | SHFT     |              | [1718] | [1819] | [1920] | [2021] | [2122] |
|                         |    |   |            |                  | Community Education | 18 | Education brochure/letter/liase major landholders                                   | SHFT     | FRNSW        | [1718] | [1819] | [1920] | [2021] | [2122] |
|                         | 19 | Water Scouts Hall Mosman                  | MOSMAN     | Human Settlement | Hazard Reduction    | 20 | Undertake mechanical works and / or prescribed burning                              | LGA      | FRNSW        | [1718] | [1819] | [1920] | [2021] | [2122] |
|                         | 20 | Iluka Road Residential                    | MOSMAN     | Human Settlement | Community Education | 17 | Annual letter with key bush fire safety messages                                    | LGA      | FRNSW        | [1718] | [1819] | [1920] | [2021] | [2122] |
|                         |    |   |            |                  | Hazard Reduction    | 23 | Maintain existing APZ   | LLGA OEH |              | [1718] | [1819] | [1920] | [2021] | [2122] |
|                         |    |   |            |                  | Ignition Management | 21 | Restrict / close reserve from public access on days of Severe or higher fire danger | LGA      | FRNSW Police | [1718] | [1819] | [1920] | [2021] | [2122] |
|                         | 21 | Quakers Hat Park Residential              | MOSMAN     | Human Settlement | Community Education | 17 | Annual letter with key bush fire safety messages                                    | LGA      | FRNSW        | [1718] | [1819] | [1920] | [2021] | [2122] |
|                         |    |   |            |                  | Hazard Reduction    | 20 | Undertake mechanical works and / or prescribed burning                              | LGA      | FRNSW        | [1718] | [1819] | [1920] | [2021] | [2122] |
|                         |    |   |            |                  | Ignition Management | 21 | Restrict / close reserve from public access on days of Severe or higher fire danger | LGA      | FRNSW Police | [1718] | [1819] | [1920] | [2021] | [2122] |
|                         | 22 | Parriwi Park Residential                  | MOSMAN     | Human Settlement | Community Education | 17 | Annual letter with key bush fire safety messages                                    | LGA      | FRNSW        | [1718] | [1819] | [1920] | [2021] | [2122] |
|                         |    |   |            |                  | Hazard Reduction    | 20 | Undertake mechanical works and / or prescribed burning                              | LGA      | FRNSW        | [1718] | [1819] | [1920] | [2021] | [2122] |
|                         |    |   |            |                  | Ignition Management | 21 | Restrict / close reserve from public access on days of Severe or higher fire danger | LGA      | FRNSW Police | [1718] | [1819] | [1920] | [2021] | [2122] |

**Annex A to  
Bush Fire Coordinating Committee  
Policy No. 1/2008**

|  |    |                               |        |                  |                     |    |   |          |                   |        |        |        |        |        |
|--|----|-------------------------------|--------|------------------|---------------------|----|---|----------|-------------------|--------|--------|--------|--------|--------|
|  | 23 | Balmoral East Residential     | MOSMAN | Human Settlement | Community Education | 17 | Annual letter with key bush fire safety messages                                    | LGA      | FRNSW             | [1718] | [1819] | [1920] | [2021] | [2122] |
|  |    |                               |        |                  | Hazard Reduction    | 24 | Undertake mechanical works and / or prescribed burning                              | LGA SHFT | OEH FRNSW Defence | [1718] | [1819] | [1920] | [2021] | [2122] |
|  |    |                               |        |                  | Community Education | 22 | Maintain Community Fire Unit as per FRNSW Policy                                    | FRNSW    |                   | [1718] | [1819] | [1920] | [2021] | [2122] |
|  | 24 | Balmoral West Residential     | MOSMAN | Human Settlement | Community Education | 17 | Annual letter with key bush fire safety messages                                    | LGA      | FRNSW             | [1718] | [1819] | [1920] | [2021] | [2122] |
|  |    |                               |        |                  | Hazard Reduction    | 20 | Undertake mechanical works and / or prescribed burning                              | LGA      | FRNSW             | [1718] | [1819] | [1920] | [2021] | [2122] |
|  |    |                               |        |                  | Community Education | 22 | Maintain Community Fire Unit as per FRNSW Policy                                    | FRNSW    |                   | [1718] | [1819] | [1920] | [2021] | [2122] |
|  | 25 | Plunkett Road Residential     | MOSMAN | Human Settlement | Community Education | 17 | Annual letter with key bush fire safety messages                                    | LGA      | FRNSW             | [1718] | [1819] | [1920] | [2021] | [2122] |
|  |    |                               |        |                  | Hazard Reduction    | 20 | Undertake mechanical works and / or prescribed burning                              | LGA      | FRNSW             | [1718] | [1819] | [1920] | [2021] | [2122] |
|  |    |                               |        |                  | Ignition Management | 21 | Restrict / close reserve from public access on days of Severe or higher fire danger | LGA      | FRNSW Police      | [1718] | [1819] | [1920] | [2021] | [2122] |
|  | 26 | Lawry Plunket Residential     | MOSMAN | Human Settlement | Community Education | 17 | Annual letter with key bush fire safety messages                                    | LGA      | FRNSW             | [1718] | [1819] | [1920] | [2021] | [2122] |
|  |    |                               |        |                  | Hazard Reduction    | 20 | Undertake mechanical works and / or prescribed burning                              | LGA      | FRNSW             | [1718] | [1819] | [1920] | [2021] | [2122] |
|  |    |                               |        |                  | Ignition Management | 21 | Restrict / close reserve from public access on days of Severe or higher fire danger | LGA      | FRNSW Police      | [1718] | [1819] | [1920] | [2021] | [2122] |
|  | 27 | Quakers Hat North Residential | MOSMAN | Human Settlement | Community Education | 17 | Annual letter with key bush fire safety messages                                    | LGA      | FRNSW             | [1718] | [1819] | [1920] | [2021] | [2122] |
|  |    |                               |        |                  | Hazard Reduction    | 20 | Undertake mechanical works and / or prescribed burning                              | LGA      | FRNSW             | [1718] | [1819] | [1920] | [2021] | [2122] |
|  |    |                               |        |                  | Ignition Management | 21 | Restrict / close reserve from public access on days of Severe or higher fire danger | LGA      | FRNSW Police      | [1718] | [1819] | [1920] | [2021] | [2122] |

**Annex A to  
Bush Fire Coordinating Committee  
Policy No. 1/2008**

|  |    |                                   |            |                  |                     |    |   |          |                   |        |        |        |        |        |
|--|----|-----------------------------------|------------|------------------|---------------------|----|---|----------|-------------------|--------|--------|--------|--------|--------|
|  | 28 | Quakers Hat South Residential     | MOSMAN     | Human Settlement | Community Education | 17 | Annual letter with key bush fire safety messages                                    | LGA      | FRNSW             | [1718] | [1819] | [1920] | [2021] | [2122] |
|  |    |                                   |            |                  | Hazard Reduction    | 20 | Undertake mechanical works and / or prescribed burning                              | LGA      | FRNSW             | [1718] | [1819] | [1920] | [2021] | [2122] |
|  |    |                                   |            |                  | Ignition Management | 21 | Restrict / close reserve from public access on days of Severe or higher fire danger | LGA      | FRNSW Police      | [1718] | [1819] | [1920] | [2021] | [2122] |
|  | 29 | Mosman Bay Water Scouts           | MOSMAN     | Human Settlement | Hazard Reduction    | 15 | Undertake mechanical works and / or prescribed burning                              | LGA      | FRNSW             | [1718] | [1819] | [1920] | [2021] | [2122] |
|  | 30 | Castle Cove Southern Escarpment   | WILLOUGHBY | Human Settlement | Hazard Reduction    | 28 | Maintain established APZ's  | LGA      |                   | [1718] | [1819] | [1920] | [2021] | [2122] |
|  |    |                                   |            |                  | Community Education | 29 | Maintain Community Fire Unit as per FRNSW Policy                                    | FRNSW    |                   | [1718] | [1819] | [1920] | [2021] | [2122] |
|  | 30 | Castle Cove Southern Escarpment   | WILLOUGHBY | Human Settlement | Hazard Reduction    | 30 | Undertake Mechanical and or Prescribed Burning                                      | LGA      | FRNSW             | [1718] | [1819] | [1920] | [2021] | [2122] |
|  | 31 | Middle Cove Southern Escarpment   | WILLOUGHBY | Human Settlement | Hazard Reduction    | 28 | Maintain established APZ's  | LGA      |                   | [1718] | [1819] | [1920] | [2021] | [2122] |
|  |    |                                   |            |                  | Hazard Reduction    | 30 | Undertake Mechanical and or Prescribed Burning                                      | LGA      | FRNSW             | [1718] | [1819] | [1920] | [2021] | [2122] |
|  | 32 | HMAS Penguin Single Structure     | MOSMAN     | Economic         | Hazard Reduction    | 24 | Undertake mechanical works and / or prescribed burning                              | LGA SHFT | OEH FRNSW Defence | [1718] | [1819] | [1920] | [2021] | [2122] |
|  | 33 | Castlecrag North Escarpment 1     | WILLOUGHBY | Human Settlement | Hazard Reduction    | 30 | Undertake Mechanical and or Prescribed Burning                                      | LGA      | FRNSW             | [1718] | [1819] | [1920] | [2021] | [2122] |
|  | 34 | Castlecrag Southern Escarpment    | WILLOUGHBY | Human Settlement | Hazard Reduction    | 30 | Undertake Mechanical and or Prescribed Burning                                      | LGA      | FRNSW             | [1718] | [1819] | [1920] | [2021] | [2122] |
|  | 35 | Northbridge North/East Escarpment | WILLOUGHBY | Human Settlement | Hazard Reduction    | 28 | Maintain established APZ's  | LGA      |                   | [1718] | [1819] | [1920] | [2021] | [2122] |
|  |    |                                   |            |                  | Hazard Reduction    | 30 | Undertake Mechanical and or Prescribed Burning                                      | LGA      | FRNSW             | [1718] | [1819] | [1920] | [2021] | [2122] |
|  | 36 | Northbridge Southern Escarpment   | WILLOUGHBY | Human Settlement | Hazard Reduction    | 30 | Undertake Mechanical and or Prescribed Burning                                      | LGA      | FRNSW             | [1718] | [1819] | [1920] | [2021] | [2122] |

**Annex A to  
Bush Fire Coordinating Committee  
Policy No. 1/2008**

|  |    |  |              |                   |                     |    |  |          |                   |        |        |        |        |        |
|--|----|--|--------------|-------------------|---------------------|----|--|----------|-------------------|--------|--------|--------|--------|--------|
|  | 37 | Tunks Park West                                  | NORTH SYDNEY | Human Settlement  | Community Education | 16 | Education brochure/letter/liaise major landholders     | LGA      | FRNSW             | [1718] | [1819] | [1920] | [2021] | [2122] |
|  |    |  |              | Human Settlement  | Hazard Reduction    | 20 | Undertake mechanical works and / or prescribed burning | LGA      | FRNSW             | [1718] | [1819] | [1920] | [2021] | [2122] |
|  | 38 | Naremburn North Escarpment                       | WILLOUGHBY   | Human Settlement  | Hazard Reduction    | 30 | Undertake Mechanical and or Prescribed Burning         | LGA      | FRNSW             | [1718] | [1819] | [1920] | [2021] | [2122] |
|  | 39 | Castlecrag Sea Scout Hall                        | WILLOUGHBY   | Human Settlement  | Hazard Reduction    | 30 | Undertake Mechanical and or Prescribed Burning         | LGA      | FRNSW             | [1718] | [1819] | [1920] | [2021] | [2122] |
|  |    |  |              |                   | Preparedness        | 31 | Conduct annual inspection of fuel loads                | LGA      |                   | [1718] | [1819] | [1920] | [2021] | [2122] |
|  | 40 | Church complex development                       | WILLOUGHBY   | Economic          | Hazard Reduction    | 30 | Undertake Mechanical and or Prescribed Burning         | LGA      | FRNSW             | [1718] | [1819] | [1920] | [2021] | [2122] |
|  | 41 | Chatswood West 3                                 | WILLOUGHBY   | Human Settlement  | Hazard Reduction    | 30 | Undertake Mechanical and or Prescribed Burning         | LGA      | FRNSW             | [1718] | [1819] | [1920] | [2021] | [2122] |
|  |    |  |              |                   | Hazard Reduction    | 28 | Maintain established APZ's                             | LGA      |                   | [1718] | [1819] | [1920] | [2021] | [2122] |
|  | 42 | Chatswood West 4                                 | WILLOUGHBY   | Human Settlement  | Hazard Reduction    | 30 | Undertake Mechanical and or Prescribed Burning         | LGA      | FRNSW             | [1718] | [1819] | [1920] | [2021] | [2122] |
|  | 43 | Northbridge Sea Scout Hall                       | WILLOUGHBY   | Human Settlement  | Hazard Reduction    | 30 | Undertake Mechanical and or Prescribed Burning         | LGA      | FRNSW             | [1718] | [1819] | [1920] | [2021] | [2122] |
|  |    |  |              |                   | Preparedness        | 31 | Conduct annual inspection of fuel loads                | LGA      |                   | [1718] | [1819] | [1920] | [2021] | [2122] |
|  | 44 | 8th Brigade Drill Hall / After School Child Care | MOSMAN       | Human Settlement  | Community Education | 17 | Annual letter with key bush fire safety messages       | LGA      | FRNSW             | [1718] | [1819] | [1920] | [2021] | [2122] |
|  |    |  |              |                   | Hazard Reduction    | 23 | Maintain existing APZ                                  | LLGA OEH |                   | [1718] | [1819] | [1920] | [2021] | [2122] |
|  |    |  |              |                   | Hazard Reduction    | 24 | Undertake mechanical works and / or prescribed burning | LGA SHFT | OEH FRNSW Defence | [1718] | [1819] | [1920] | [2021] | [2122] |
|  | 45 | Old Dance Hall Ruins                             | WILLOUGHBY   | Cultural Heritage | Hazard Reduction    | 25 | Maintain reduced fuel loads around perimeter           | LGA      |                   | [1718] | [1819] | [1920] | [2021] | [2122] |
|  | 46 | Ausgrid Electrical Sub Station                   | WILLOUGHBY   | Economic          | Preparedness        | 26 | Maintain agency maintenance / inspection program       | Ausgrid  |                   | [1718] | [1819] | [1920] | [2021] | [2122] |
|  |    |  |              |                   | Hazard Reduction    | 27 | Undertake mechanical works and / or prescribed burning | LGA      | FRNSW             | [1718] | [1819] | [1920] | [2021] | [2122] |

**Annex A to  
Bush Fire Coordinating Committee  
Policy No. 1/2008**

|                    |    |                                  |              |                   |                     |    |   |               |                  |        |        |        |        |        |
|--------------------|----|----------------------------------|--------------|-------------------|---------------------|----|---|---------------|------------------|--------|--------|--------|--------|--------|
|                    | 47 | Bradleys Head Public Precinct    | MOSMAN       | Cultural Heritage | Ignition Management | 21 | Restrict / close reserve from public access on days of Severe or higher fire danger | LGA           | FRNSW Police     | [1718] | [1819] | [1920] | [2021] | [2122] |
|                    |    |                                  |              |                   | Hazard Reduction    | 23 | Maintain existing APZ   | LLGA OEH      |                  | [1718] | [1819] | [1920] | [2021] | [2122] |
|                    |    |                                  |              |                   | Hazard Reduction    | 32 | Undertake mechanical works and / or prescribed burning                              | OEH           | FRNSW            | [1718] | [1819] | [1920] | [2021] | [2122] |
| <b>3A<br/>High</b> | 48 | Raglan Street Residential        | MOSMAN       | Human Settlement  | Hazard Reduction    | 37 | Undertake mechanical works and / or prescribed burning                              | LGA           | FRNSW            | [1718] | [1819] | [1920] | [2021] | [2122] |
|                    |    |                                  |              |                   | Community Education | 38 | Education brochure/letter/liase major landholders                                   | LGA           | FRNSW            | [1718] | [1819] | [1920] | [2021] | [2122] |
|                    | 49 | Curraghbeena Road Residential    | MOSMAN       | Human Settlement  | Hazard Reduction    | 37 | Undertake mechanical works and / or prescribed burning                              | LGA           | FRNSW            | [1718] | [1819] | [1920] | [2021] | [2122] |
|                    |    |                                  |              |                   | Community Education | 38 | Education brochure/letter/liase major landholders                                   | LGA           | FRNSW            | [1718] | [1819] | [1920] | [2021] | [2122] |
|                    | 50 | Childcare Centre                 | MOSMAN       | Human Settlement  | Hazard Reduction    | 41 | Maintain existing APZ   | Defence. SHFT |                  | [1718] | [1819] | [1920] | [2021] | [2122] |
|                    |    |                                  |              |                   | Community Education | 42 | Education brochure/letter/liase major landholders                                   | Other         | FRNSW            | [1718] | [1819] | [1920] | [2021] | [2122] |
|                    |    |                                  |              |                   | Preparedness        | 43 | Restrict / close reserve from public access on days of Severe or higher fire danger | Other         | OEH FRNSW Police | [1718] | [1819] | [1920] | [2021] | [2122] |
|                    |    |                                  |              |                   | Hazard Reduction    | 34 | Maintain existing APZ   | OEH           |                  | [1718] | [1819] | [1920] | [2021] | [2122] |
|                    | 51 | Curlew Camp Road Residential     | MOSMAN       | Human Settlement  | Hazard Reduction    | 37 | Undertake mechanical works and / or prescribed burning                              | LGA           | FRNSW            | [1718] | [1819] | [1920] | [2021] | [2122] |
|                    |    |                                  |              |                   | Community Education | 38 | Education brochure/letter/liase major landholders                                   | LGA           | FRNSW            | [1718] | [1819] | [1920] | [2021] | [2122] |
|                    | 52 | Governor's residence Middle Head | MOSMAN       | Human Settlement  | Ignition Management | 39 | Restrict / close reserve from public access on days of Severe or higher fire danger | LGA OEH SHFT  | FRNSW Police     | [1718] | [1819] | [1920] | [2021] | [2122] |
|                    |    |                                  |              |                   | Hazard Reduction    | 34 | Maintain existing APZ   | OEH           |                  | [1718] | [1819] | [1920] | [2021] | [2122] |
|                    | 53 | Endangered Flora HMAS Waterhen   | NORTH SYDNEY | Environmental     | Preparedness        | 40 | Implement Defence Bush Fire Management Plan   | Defence       | LGA FRNSW        | [1718] | [1819] | [1920] | [2021] | [2122] |

**Annex A to  
Bush Fire Coordinating Committee  
Policy No. 1/2008**

|  |    |   |        |                  |                     |    |   |              |              |        |        |        |        |        |
|--|----|---|--------|------------------|---------------------|----|---|--------------|--------------|--------|--------|--------|--------|--------|
|  | 54 | Sergeant majors quarters (Rangers office) | MOSMAN | Human Settlement | Ignition Management | 39 | Restrict / close reserve from public access on days of Severe or higher fire danger | LGA OEH SHFT | FRNSW Police | [1718] | [1819] | [1920] | [2021] | [2122] |
|  |    |   |        |                  | Hazard Reduction    | 34 | Maintain existing APZ   | OEH          |              | [1718] | [1819] | [1920] | [2021] | [2122] |
|  | 55 | Barracks (Admin office)                   | MOSMAN | Human Settlement | Hazard Reduction    | 34 | Maintain existing APZ   | OEH          |              | [1718] | [1819] | [1920] | [2021] | [2122] |
|  |    |   |        |                  | Ignition Management | 39 | Restrict / close reserve from public access on days of Severe or higher fire danger | LGA OEH SHFT | FRNSW Police | [1718] | [1819] | [1920] | [2021] | [2122] |
|  | 56 | Radio tower - Police                      | MOSMAN | Economic         | Hazard Reduction    | 35 | Undertake mowing / slash of existing APZ  | OEH          |              | [1718] | [1819] | [1920] | [2021] | [2122] |
|  |    |   |        |                  | Ignition Management | 39 | Restrict / close reserve from public access on days of Severe or higher fire danger | LGA OEH SHFT | FRNSW Police | [1718] | [1819] | [1920] | [2021] | [2122] |
|  | 57 | Soldiers Institute                        | MOSMAN | Human Settlement | Hazard Reduction    | 34 | Maintain existing APZ   | OEH          |              | [1718] | [1819] | [1920] | [2021] | [2122] |
|  |    |   |        |                  | Ignition Management | 39 | Restrict / close reserve from public access on days of Severe or higher fire danger | LGA OEH SHFT | FRNSW Police | [1718] | [1819] | [1920] | [2021] | [2122] |
|  | 58 | Tool shed                                 | MOSMAN | Human Settlement | Hazard Reduction    | 34 | Maintain existing APZ   | OEH          |              | [1718] | [1819] | [1920] | [2021] | [2122] |
|  |    |   |        |                  | Ignition Management | 39 | Restrict / close reserve from public access on days of Severe or higher fire danger | LGA OEH SHFT | FRNSW Police | [1718] | [1819] | [1920] | [2021] | [2122] |
|  | 59 | Former guardhouse - now store and office  | MOSMAN | Human Settlement | Hazard Reduction    | 34 | Maintain existing APZ   | OEH          |              | [1718] | [1819] | [1920] | [2021] | [2122] |
|  |    |   |        |                  | Ignition Management | 39 | Restrict / close reserve from public access on days of Severe or higher fire danger | LGA OEH SHFT | FRNSW Police | [1718] | [1819] | [1920] | [2021] | [2122] |
|  | 60 | Materials / equipment storage yard        | MOSMAN | Economic         | Hazard Reduction    | 34 | Maintain existing APZ   | OEH          |              | [1718] | [1819] | [1920] | [2021] | [2122] |
|  |    |   |        |                  | Ignition Management | 39 | Restrict / close reserve from public access on days of Severe or higher fire danger | LGA OEH SHFT | FRNSW Police | [1718] | [1819] | [1920] | [2021] | [2122] |
|  | 61 | Athol Hall                                | MOSMAN | Economic         | Hazard Reduction    | 34 | Maintain existing APZ   | OEH          |              | [1718] | [1819] | [1920] | [2021] | [2122] |
|  |    |   |        |                  | Ignition Management | 39 | Restrict / close reserve from public access on days of Severe or higher fire danger | LGA OEH SHFT | FRNSW Police | [1718] | [1819] | [1920] | [2021] | [2122] |



**Annex A to  
Bush Fire Coordinating Committee  
Policy No. 1/2008**

|  |    |   |        |                  |                     |    |   |              |              |        |        |        |        |        |
|--|----|---|--------|------------------|---------------------|----|---|--------------|--------------|--------|--------|--------|--------|--------|
|  | 62 | Morella Road Residential                    | MOSMAN | Human Settlement | Hazard Reduction    | 37 | Undertake mechanical works and / or prescribed burning                              | LGA          | FRNSW        | [1718] | [1819] | [1920] | [2021] | [2122] |
|  |    |   |        |                  | Community Education | 38 | Education brochure/letter/liaise major landholders                                  | LGA          | FRNSW        | [1718] | [1819] | [1920] | [2021] | [2122] |
|  |    |   |        |                  | Community Education | 44 | Maintain Community Fire Unit as per FRNSW Policy                                    | FRNSW        |              | [1718] | [1819] | [1920] | [2021] | [2122] |
|  | 63 | Morella Road 2 Residential                  | MOSMAN | Human Settlement | Hazard Reduction    | 33 | Undertake prescribed burning  | OEH          | FRNSW        | [1718] | [1819] | [1920] | [2021] | [2122] |
|  |    |   |        |                  | Hazard Reduction    | 37 | Undertake mechanical works and / or prescribed burning                              | LGA          | FRNSW        | [1718] | [1819] | [1920] | [2021] | [2122] |
|  |    |   |        |                  | Community Education | 38 | Education brochure/letter/liaise major landholders                                  | LGA          | FRNSW        | [1718] | [1819] | [1920] | [2021] | [2122] |
|  |    |   |        |                  | Community Education | 44 | Maintain Community Fire Unit as per FRNSW Policy                                    | FRNSW        |              | [1718] | [1819] | [1920] | [2021] | [2122] |
|  | 64 | Bradley's Residential                       | MOSMAN | Human Settlement | Hazard Reduction    | 37 | Undertake mechanical works and / or prescribed burning                              | LGA          | FRNSW        | [1718] | [1819] | [1920] | [2021] | [2122] |
|  |    |   |        |                  | Community Education | 38 | Education brochure/letter/liaise major landholders                                  | LGA          | FRNSW        | [1718] | [1819] | [1920] | [2021] | [2122] |
|  |    |   |        |                  | Ignition Management | 39 | Restrict / close reserve from public access on days of Severe or higher fire danger | LGA OEH SHFT | FRNSW Police | [1718] | [1819] | [1920] | [2021] | [2122] |
|  | 65 | Lands Edge (School / 24 hour Accommodation) | MOSMAN | Human Settlement | Community Education | 42 | Education brochure/letter/liaise major landholders                                  | Other        | FRNSW        | [1718] | [1819] | [1920] | [2021] | [2122] |
|  |    |   |        |                  | Hazard Reduction    | 36 | Undertake mechanical works and / or prescribed burning                              | Other        | OEH FRNSW    | [1718] | [1819] | [1920] | [2021] | [2122] |
|  | 66 | Rawson Park Tennis Centre                   | MOSMAN | Economic         | Hazard Reduction    | 37 | Undertake mechanical works and / or prescribed burning                              | LGA          | FRNSW        | [1718] | [1819] | [1920] | [2021] | [2122] |
|  |    |   |        |                  | Community Education | 38 | Education brochure/letter/liaise major landholders                                  | LGA          | FRNSW        | [1718] | [1819] | [1920] | [2021] | [2122] |

**Annex A to  
Bush Fire Coordinating Committee  
Policy No. 1/2008**

|  |    |   |            |                   |                     |    |   |              |                      |        |        |        |        |        |
|--|----|---|------------|-------------------|---------------------|----|---|--------------|----------------------|--------|--------|--------|--------|--------|
|  | 67 | Marina & Mosman Rowing Club                     | MOSMAN     | Economic          | Ignition Management | 46 | Restrict / close reserve from public access on days of Severe or higher fire danger | LGA          | FRNSW Police         | [1718] | [1819] | [1920] | [2021] | [2122] |
|  |    |   |            |                   | Hazard Reduction    | 37 | Undertake mechanical works and / or prescribed burning                              | LGA          | FRNSW                | [1718] | [1819] | [1920] | [2021] | [2122] |
|  |    |   |            |                   | Community Education | 38 | Education brochure/letter/liaise major landholders                                  | LGA          | FRNSW                | [1718] | [1819] | [1920] | [2021] | [2122] |
|  | 68 | Middle Head to Balmoral Walking Track           | MOSMAN     | Economic          | Hazard Reduction    | 41 | Maintain existing APZ   | Defence SHFT |                      | [1718] | [1819] | [1920] | [2021] | [2122] |
|  |    |   |            |                   | Preparedness        | 43 | Restrict / close reserve from public access on days of Severe or higher fire danger | SHFT         | OEHS<br>FRNSW Police | [1718] | [1819] | [1920] | [2021] | [2122] |
|  | 69 | Burnt Orange Cafe                               | MOSMAN     | Economic          | Hazard Reduction    | 45 | Undertake mechanical works and / or prescribed burning                              | OEHS         | LGA<br>FRNSW         | [1718] | [1819] | [1920] | [2021] | [2122] |
|  |    |   |            |                   | Hazard Reduction    | 48 | Maintain existing APZ   | Other        |                      | [1718] | [1819] | [1920] | [2021] | [2122] |
|  | 70 | Castle Cove Southern Escarpment 1               | WILLOUGHBY | Human Settlement  | Hazard Reduction    | 53 | Maintain fuel reduced road edge   | LGA          |                      | [1718] | [1819] | [1920] | [2021] | [2122] |
|  | 71 | Castlecrag Boatshed/Marina                      | WILLOUGHBY | Economic          | Hazard Reduction    | 54 | Undertake Mechanical and or Prescribed Burning                                      | LGA          | FRNSW                | [1718] | [1819] | [1920] | [2021] | [2122] |
|  | 72 | Northbridge Swimming Baths                      | WILLOUGHBY | Economic          | Hazard Reduction    | 54 | Undertake Mechanical and or Prescribed Burning                                      | LGA          | FRNSW                | [1718] | [1819] | [1920] | [2021] | [2122] |
|  | 73 | Northbridge Sailing Club and Northbridge Marina | WILLOUGHBY | Economic          | Hazard Reduction    | 54 | Undertake Mechanical and or Prescribed Burning                                      | LGA          | FRNSW                | [1718] | [1819] | [1920] | [2021] | [2122] |
|  | 74 | Tennis Valley                                   | WILLOUGHBY | Economic          | Hazard Reduction    | 54 | Undertake Mechanical and or Prescribed Burning                                      | LGA          | FRNSW                | [1718] | [1819] | [1920] | [2021] | [2122] |
|  |    |   |            |                   | Hazard Reduction    | 55 | Maintain existing APZ   | LGA          |                      | [1718] | [1819] | [1920] | [2021] | [2122] |
|  | 75 | Fatty Dawson Ruins                              | WILLOUGHBY | Cultural Heritage | Hazard Reduction    | 56 | Maintain reduced fuel loads around perimeter  | LGA          |                      | [1718] | [1819] | [1920] | [2021] | [2122] |

**Annex A to  
Bush Fire Coordinating Committee  
Policy No. 1/2008**

|             |    |   |              |                  |                     |    |   |             |              |        |        |        |        |        |
|-------------|----|---|--------------|------------------|---------------------|----|---|-------------|--------------|--------|--------|--------|--------|--------|
|             | 76 | Penford's Factory                       | WILLOUGHBY   | Economic         | Hazard Reduction    | 52 | Maintain SFAZ - Pumphouse Reserve   | LGA         | FRNSW        | [1718] | [1819] | [1920] | [2021] | [2122] |
|             |    |   |              |                  | Hazard Reduction    | 51 | Maintain LMZ - Pumphouse Reserve  | LGA         |              | [1718] | [1819] | [1920] | [2021] | [2122] |
|             |    |   |              |                  | Hazard Reduction    | 50 | Maintain SFAZ - Magdala Road  | OEH         |              | [1718] | [1819] | [1920] | [2021] | [2122] |
|             |    |   |              |                  | Preparedness        | 47 | Maintain APZ - Annual maintenance inspection  | LGA Private |              | [1718] | [1819] | [1920] | [2021] | [2122] |
|             |    |   |              |                  | Hazard Reduction    | 49 | Maintain APZ - Old Pacific Power Site   | LGA Private |              | [1718] | [1819] | [1920] | [2021] | [2122] |
|             | 77 | Tunks Park East Residential             | NORTH SYDNEY | Human Settlement | Community Education | 57 | Education brochure/letter/liaise major landholders                                  | LGA         | FRNSW        | [1718] | [1819] | [1920] | [2021] | [2122] |
|             |    |   |              |                  | Hazard Reduction    | 58 | Undertake mechanical works and / or prescribed bur                                  | LGA         | FRNSW        | [1718] | [1819] | [1920] | [2021] | [2122] |
|             | 78 | Milray Ave Residential                  | NORTH SYDNEY | Human Settlement | Community Education | 57 | Education brochure/letter/liaise major landholders                                  | LGA         | FRNSW        | [1718] | [1819] | [1920] | [2021] | [2122] |
|             |    |   |              |                  | Hazard Reduction    | 58 | Undertake mechanical works and / or prescribed bur                                  | LGA         | FRNSW        | [1718] | [1819] | [1920] | [2021] | [2122] |
|             |    |   |              |                  | Ignition Management | 59 | Restrict / close reserve from public access on days of Severe or higher fire danger | LGA         | FRNSW Police | [1718] | [1819] | [1920] | [2021] | [2122] |
|             | 79 | HMAS Waterhen                           | NORTH SYDNEY | Economic         | Community Education | 57 | Education brochure/letter/liaise major landholders                                  | LGA         | FRNSW        | [1718] | [1819] | [1920] | [2021] | [2122] |
|             |    |   |              |                  | Preparedness        | 40 | Implement Defence Bush Fire Management Plan   | Defence     | LGA FRNSW    | [1718] | [1819] | [1920] | [2021] | [2122] |
| 4<br>Medium | 80 | Balls Head Quarantine Station Residents | NORTH SYDNEY | Human Settlement | Community Education | 60 | Education brochure/letter/liaise major landholders                                  | LGA         | FRNSW        | [1718] | [1819] | [1920] | [2021] | [2122] |
|             |    |   |              |                  | Ignition Management | 62 | Restrict / close reserve from public access on days of Severe or higher fire danger | LGA         | FRNSW Police | [1718] | [1819] | [1920] | [2021] | [2122] |
|             |    |   |              |                  | Hazard Reduction    | 61 | Undertake mechanical works and / or prescribed burning                              | LGA         | FRNSW        | [1718] | [1819] | [1920] | [2021] | [2122] |

**Annex A to  
Bush Fire Coordinating Committee  
Policy No. 1/2008**

|  |    |                                      |        |                   |                     |    |   |       |              |        |        |        |        |        |
|--|----|--------------------------------------|--------|-------------------|---------------------|----|---|-------|--------------|--------|--------|--------|--------|--------|
|  | 81 | Sirius and Rickard Roads Residential | MOSMAN | Human Settlement  | Hazard Reduction    | 61 | Undertake mechanical works and / or prescribed burning                              | LGA   | FRNSW        | [1718] | [1819] | [1920] | [2021] | [2122] |
|  |    |                                      |        |                   | Ignition Management | 62 | Restrict / close reserve from public access on days of Severe or higher fire danger | LGA   | FRNSW Police | [1718] | [1819] | [1920] | [2021] | [2122] |
|  |    |                                      |        |                   | Community Education | 64 | Annual letter with key bush fire safety messages                                    | LGA   | FRNSW        | [1718] | [1819] | [1920] | [2021] | [2122] |
|  | 82 | Royalist and Boyle Residential       | MOSMAN | Human Settlement  | Community Education | 64 | Annual letter with key bush fire safety messages                                    | LGA   | FRNSW        | [1718] | [1819] | [1920] | [2021] | [2122] |
|  |    |                                      |        |                   | Hazard Reduction    | 61 | Undertake mechanical works and / or prescribed burning                              | LGA   | FRNSW        | [1718] | [1819] | [1920] | [2021] | [2122] |
|  |    |                                      |        |                   | Ignition Management | 62 | Restrict / close reserve from public access on days of Severe or higher fire danger | LGA   | FRNSW Police | [1718] | [1819] | [1920] | [2021] | [2122] |
|  | 83 | Millet Road Residential              | MOSMAN | Human Settlement  | Hazard Reduction    | 61 | Undertake mechanical works and / or prescribed burning                              | LGA   | FRNSW        | [1718] | [1819] | [1920] | [2021] | [2122] |
|  |    |                                      |        |                   | Community Education | 64 | Annual letter with key bush fire safety messages                                    | LGA   | FRNSW        | [1718] | [1819] | [1920] | [2021] | [2122] |
|  | 84 | Dominion Crescent Residential        | MOSMAN | Human Settlement  | Community Education | 65 | Education brochure/letter/liaise major landholders                                  | SHFT  | FRNSW        | [1718] | [1819] | [1920] | [2021] | [2122] |
|  |    |                                      |        |                   | Hazard Reduction    | 66 | Maintain existing APZ   | SHFT  |              | [1718] | [1819] | [1920] | [2021] | [2122] |
|  | 85 | Camouflaged Fuel Tanks 3, 4 & 5      | MOSMAN | Cultural Heritage | Hazard Reduction    | 66 | Maintain existing APZ   | SHFT  |              | [1718] | [1819] | [1920] | [2021] | [2122] |
|  |    |                                      |        |                   | Community Education | 65 | Education brochure/letter/liaise major landholders                                  | SHFT  | FRNSW        | [1718] | [1819] | [1920] | [2021] | [2122] |
|  | 86 | Pippies Child Care Centre            | MOSMAN | Human Settlement  | Preparedness        | 67 | Site inspection and review of Pre Incident Plan                                     | FRNSW |              | [1718] | [1819] | [1920] | [2021] | [2122] |
|  |    |                                      |        |                   | Community Education | 60 | Education brochure/letter/liaise major landholders                                  | LGA   | FRNSW        | [1718] | [1819] | [1920] | [2021] | [2122] |
|  | 87 | Bay Street 2 Residential             | MOSMAN | Human Settlement  | Community Education | 60 | Education brochure/letter/liaise major landholders                                  | LGA   | FRNSW        | [1718] | [1819] | [1920] | [2021] | [2122] |
|  |    |                                      |        |                   | Hazard Reduction    | 61 | Undertake mechanical works and / or prescribed burning                              | LGA   | FRNSW        | [1718] | [1819] | [1920] | [2021] | [2122] |

**Annex A to  
Bush Fire Coordinating Committee  
Policy No. 1/2008**

|  |    |                                      |              |                  |                     |    |   |              |              |        |        |        |        |        |
|--|----|--------------------------------------|--------------|------------------|---------------------|----|---|--------------|--------------|--------|--------|--------|--------|--------|
|  | 88 | Carrington Residential               | MOSMAN       | Human Settlement | Community Education | 60 | Education brochure/letter/liaise major landholders                                  | LGA          | FRNSW        | [1718] | [1819] | [1920] | [2021] | [2122] |
|  |    |                                      |              |                  | Hazard Reduction    | 61 | Undertake mechanical works and / or prescribed burning                              | LGA          | FRNSW        | [1718] | [1819] | [1920] | [2021] | [2122] |
|  | 89 | Cross Street Residential             | MOSMAN       | Human Settlement | Community Education | 60 | Education brochure/letter/liaise major landholders                                  | LGA          | FRNSW        | [1718] | [1819] | [1920] | [2021] | [2122] |
|  |    |                                      |              |                  | Hazard Reduction    | 61 | Undertake mechanical works and / or prescribed burning                              | LGA          | FRNSW        | [1718] | [1819] | [1920] | [2021] | [2122] |
|  |    |                                      |              |                  | Ignition Management | 39 | Restrict / close reserve from public access on days of Severe or higher fire danger | LGA OEH SHFT | FRNSW Police | [1718] | [1819] | [1920] | [2021] | [2122] |
|  |    |                                      |              |                  | Community Education | 63 | Maintain Community Fire Unit as per FRNSW Policy                                    | FRNSW        |              | [1718] | [1819] | [1920] | [2021] | [2122] |
|  | 90 | Folley Point Residential             | NORTH SYDNEY | Human Settlement | Community Education | 60 | Education brochure/letter/liaise major landholders                                  | LGA          | FRNSW        | [1718] | [1819] | [1920] | [2021] | [2122] |
|  | 91 | Aqueduct Tunks Park East             | NORTH SYDNEY | Economic         | Hazard Reduction    | 61 | Undertake mechanical works and / or prescribed burning                              | LGA          | FRNSW        | [1718] | [1819] | [1920] | [2021] | [2122] |
|  | 92 | Burnt Orange Carpark                 | MOSMAN       | Economic         | Hazard Reduction    | 36 | Undertake mechanical works and / or prescribed burning                              | SHFT         | OEH FRNSW    | [1718] | [1819] | [1920] | [2021] | [2122] |
|  | 93 | Former ASOPA & 10 Terminal Buildings | MOSMAN       | Human Settlement | Ignition Management | 39 | Restrict / close reserve from public access on days of Severe or higher fire danger | LGA OEH SHFT | FRNSW Police | [1718] | [1819] | [1920] | [2021] | [2122] |
|  |    |                                      |              |                  | Community Education | 65 | Education brochure/letter/liaise major landholders                                  | SHFT         | FRNSW        | [1718] | [1819] | [1920] | [2021] | [2122] |
|  |    |                                      |              |                  | Hazard Reduction    | 66 | Maintain existing APZ   | SHFT         |              | [1718] | [1819] | [1920] | [2021] | [2122] |
|  | 94 | Endangered Flora HMAS Penguin        | MOSMAN       | Environmental    | Preparedness        | 68 | Implement Defence Bush Fire Management Plan   | Defence      | FRNSW        | [1718] | [1819] | [1920] | [2021] | [2122] |
|  | 95 | Primrose Residential                 | NORTH SYDNEY | Human Settlement | Community Education | 60 | Education brochure/letter/liaise major landholders                                  | LGA          | FRNSW        | [1718] | [1819] | [1920] | [2021] | [2122] |
|  |    |                                      |              |                  | Hazard Reduction    | 61 | Undertake mechanical works and / or prescribed burning                              | LGA          | FRNSW        | [1718] | [1819] | [1920] | [2021] | [2122] |

**Annex A to  
Bush Fire Coordinating Committee  
Policy No. 1/2008**

|  |     |   |              |                  |                     |    |   |      |              |        |        |        |        |        |
|--|-----|---|--------------|------------------|---------------------|----|---|------|--------------|--------|--------|--------|--------|--------|
|  | 96  | Brightmore Residential                    | NORTH SYDNEY | Human Settlement | Community Education | 60 | Education brochure/letter/liase major landholders                                   | LGA  | FRNSW        | [1718] | [1819] | [1920] | [2021] | [2122] |
|  |     |   |              |                  | Hazard Reduction    | 61 | Undertake mechanical works and / or prescribed burning                              | LGA  | FRNSW        | [1718] | [1819] | [1920] | [2021] | [2122] |
|  | 97  | Wonga Rd Residential                      | NORTH SYDNEY | Human Settlement | Community Education | 60 | Education brochure/letter/liase major landholders                                   | LGA  | FRNSW        | [1718] | [1819] | [1920] | [2021] | [2122] |
|  |     |   |              |                  | Hazard Reduction    | 61 | Undertake mechanical works and / or prescribed burning                              | LGA  | FRNSW        | [1718] | [1819] | [1920] | [2021] | [2122] |
|  | 98  | Rotary Men's Shed                         | NORTH SYDNEY | Economic         | Community Education | 60 | Education brochure/letter/liase major landholders                                   | LGA  | FRNSW        | [1718] | [1819] | [1920] | [2021] | [2122] |
|  |     |   |              |                  | Hazard Reduction    | 61 | Undertake mechanical works and / or prescribed burning                              | LGA  | FRNSW        | [1718] | [1819] | [1920] | [2021] | [2122] |
|  | 99  | Primrose Community Centre / Tennis Courts | NORTH SYDNEY | Economic         | Hazard Reduction    | 61 | Undertake mechanical works and / or prescribed burning                              | LGA  | FRNSW        | [1718] | [1819] | [1920] | [2021] | [2122] |
|  | 100 | Brightmore Residential 2                  | NORTH SYDNEY | Human Settlement | Community Education | 60 | Education brochure/letter/liase major landholders                                   | LGA  | FRNSW        | [1718] | [1819] | [1920] | [2021] | [2122] |
|  | 101 | NSW Fisheries Complex                     | NORTH SYDNEY | Economic         | Community Education | 60 | Education brochure/letter/liase major landholders                                   | LGA  | FRNSW        | [1718] | [1819] | [1920] | [2021] | [2122] |
|  |     |   |              |                  | Hazard Reduction    | 61 | Undertake mechanical works and / or prescribed burning                              | LGA  | FRNSW        | [1718] | [1819] | [1920] | [2021] | [2122] |
|  |     |   |              |                  | Ignition Management | 62 | Restrict / close reserve from public access on days of Severe or higher fire danger | LGA  | FRNSW Police | [1718] | [1819] | [1920] | [2021] | [2122] |
|  | 102 | Chatswood West Tennis Club                | WILLOUGHBY   | Economic         | Preparedness        | 69 | Conduct annual inspection of fuel loads   | LGA  |              | [1718] | [1819] | [1920] | [2021] | [2122] |
|  | 103 | Middle Head Road Residential              | MOSMAN       | Human Settlement | Hazard Reduction    | 66 | Maintain existing APZ   | SHFT |              | [1718] | [1819] | [1920] | [2021] | [2122] |
|  |     |   |              |                  | Hazard Reduction    | 36 | Undertake mechanical works and / or prescribed burning                              | SHFT | OEHS FRNSW   | [1718] | [1819] | [1920] | [2021] | [2122] |
|  |     |   |              |                  | Community Education | 65 | Education brochure/letter/liase major landholders                                   | SHFT | FRNSW        | [1718] | [1819] | [1920] | [2021] | [2122] |

**Annex A to  
Bush Fire Coordinating Committee  
Policy No. 1/2008**

|  |     |  |            |                  |                     |    |   |              |              |        |        |        |        |        |
|--|-----|--|------------|------------------|---------------------|----|---|--------------|--------------|--------|--------|--------|--------|--------|
|  | 104 | Headland Park Artist Precinct                  | MOSMAN     | Economic         | Hazard Reduction    | 36 | Undertake mechanical works and / or prescribed burning                              | SHFT         | OEH FRNSW    | [1718] | [1819] | [1920] | [2021] | [2122] |
|  |     |  |            |                  | Community Education | 65 | Education brochure/letter/liase major landholders                                   | SHFT         | FRNSW        | [1718] | [1819] | [1920] | [2021] | [2122] |
|  |     |  |            |                  | Ignition Management | 39 | Restrict / close reserve from public access on days of Severe or higher fire danger | LGA OEH SHFT | FRNSW Police | [1718] | [1819] | [1920] | [2021] | [2122] |
|  | 105 | Gun shot alley                                 | MOSMAN     | Economic         | Hazard Reduction    | 36 | Undertake mechanical works and / or prescribed burning                              | SHFT         | OEH FRNSW    | [1718] | [1819] | [1920] | [2021] | [2122] |
|  |     |  |            |                  | Ignition Management | 39 | Restrict / close reserve from public access on days of Severe or higher fire danger | LGA OEH SHFT | FRNSW Police | [1718] | [1819] | [1920] | [2021] | [2122] |
|  |     |  |            |                  | Community Education | 65 | Education brochure/letter/liase major landholders                                   | SHFT         | FRNSW        | [1718] | [1819] | [1920] | [2021] | [2122] |
|  | 106 | Georges Heights SHFT Buildings Complex         | MOSMAN     | Economic         | Hazard Reduction    | 36 | Undertake mechanical works and / or prescribed burning                              | SHFT         | OEH FRNSW    | [1718] | [1819] | [1920] | [2021] | [2122] |
|  |     |  |            |                  | Ignition Management | 39 | Restrict / close reserve from public access on days of Severe or higher fire danger | LGA OEH SHFT | FRNSW Police | [1718] | [1819] | [1920] | [2021] | [2122] |
|  |     |  |            |                  | Hazard Reduction    | 66 | Maintain existing APZ   | SHFT         |              | [1718] | [1819] | [1920] | [2021] | [2122] |
|  |     |  |            |                  | Community Education | 65 | Education brochure/letter/liase major landholders                                   | SHFT         | FRNSW        | [1718] | [1819] | [1920] | [2021] | [2122] |
|  | 107 | Gunners Barracks Tea Room                      | MOSMAN     | Economic         | Hazard Reduction    | 36 | Undertake mechanical works and / or prescribed burning                              | SHFT         | OEH FRNSW    | [1718] | [1819] | [1920] | [2021] | [2122] |
|  |     |  |            |                  | Ignition Management | 39 | Restrict / close reserve from public access on days of Severe or higher fire danger | LGA OEH SHFT | FRNSW Police | [1718] | [1819] | [1920] | [2021] | [2122] |
|  |     |  |            |                  | Hazard Reduction    | 66 | Maintain existing APZ   | SHFT         |              | [1718] | [1819] | [1920] | [2021] | [2122] |
|  | 108 | Mowbray Primary School                         | WILLOUGHBY | Human Settlement | Preparedness        | 69 | Conduct annual inspection of fuel loads   | LGA          |              | [1718] | [1819] | [1920] | [2021] | [2122] |
|  | 109 | Northbridge park sport facilities & men's shed | WILLOUGHBY | Economic         | Hazard Reduction    | 61 | Undertake mechanical works and / or prescribed burning                              | LGA          | FRNSW        | [1718] | [1819] | [1920] | [2021] | [2122] |

**Annex A to  
Bush Fire Coordinating Committee  
Policy No. 1/2008**

|           |     |                          |                 |                     |                        |    |   |                 |                 |        |        |        |        |        |
|-----------|-----|--------------------------|-----------------|---------------------|------------------------|----|---|-----------------|-----------------|--------|--------|--------|--------|--------|
| NA<br>Low | 110 | Woodley's Boat Builders  | NORTH<br>SYDNEY | Economic            | Community<br>Education | 71 | Education brochure/letter/liaise<br>major landholders                                     | LGA             | FRNSW           | [1718] | [1819] | [1920] | [2021] | [2122] |
|           |     |                          |                 |                     | Hazard<br>Reduction    | 72 | Undertake mechanical works<br>and / or prescribed burning                                 | LGA             | FRNSW           | [1718] | [1819] | [1920] | [2021] | [2122] |
|           |     |                          |                 |                     | Ignition<br>Management | 76 | Restrict / close reserve from<br>public access on days of<br>Severe or higher fire danger | LGA             | FRNSW<br>Police | [1718] | [1819] | [1920] | [2021] | [2122] |
|           | 111 | Tryon Ave Residential    | NORTH<br>SYDNEY | Human<br>Settlement | Community<br>Education | 71 | Education brochure/letter/liaise<br>major landholders                                     | LGA             | FRNSW           | [1718] | [1819] | [1920] | [2021] | [2122] |
|           |     |                          |                 |                     | Hazard<br>Reduction    | 72 | Undertake mechanical works<br>and / or prescribed burning                                 | LGA             | FRNSW           | [1718] | [1819] | [1920] | [2021] | [2122] |
|           |     |                          |                 |                     | Ignition<br>Management | 76 | Restrict / close reserve from<br>public access on days of<br>Severe or higher fire danger | LGA             | FRNSW<br>Police | [1718] | [1819] | [1920] | [2021] | [2122] |
|           | 112 | Park Avenue Residential  | MOSMAN          | Human<br>Settlement | Community<br>Education | 71 | Education brochure/letter/liaise<br>major landholders                                     | LGA             | FRNSW           | [1718] | [1819] | [1920] | [2021] | [2122] |
|           |     |                          |                 |                     | Hazard<br>Reduction    | 72 | Undertake mechanical works<br>and / or prescribed burning                                 | LGA             | FRNSW           | [1718] | [1819] | [1920] | [2021] | [2122] |
|           |     |                          |                 |                     | Ignition<br>Management | 74 | Restrict / close reserve from<br>public access on days of<br>Severe or higher fire danger | LGA OEH<br>SHFT | FRNSW<br>Police | [1718] | [1819] | [1920] | [2021] | [2122] |
|           | 113 | Shirley Road Residential | NORTH<br>SYDNEY | Human<br>Settlement | Ignition<br>Management | 62 | Restrict / close reserve from<br>public access on days of<br>Severe or higher fire danger | LGA             | FRNSW<br>Police | [1718] | [1819] | [1920] | [2021] | [2122] |
|           |     |                          |                 | Human<br>Settlement | Community<br>Education | 60 | Education brochure/letter/liaise<br>major landholders                                     | LGA             | FRNSW           | [1718] | [1819] | [1920] | [2021] | [2122] |
|           |     |                          |                 | Human<br>Settlement | Hazard<br>Reduction    | 61 | Undertake mechanical works<br>and / or prescribed burning                                 | LGA             | FRNSW           | [1718] | [1819] | [1920] | [2021] | [2122] |



**Annex A to  
Bush Fire Coordinating Committee  
Policy No. 1/2008**

|  |     |                                  |              |                   |                     |    |   |      |              |        |        |        |        |        |
|--|-----|----------------------------------|--------------|-------------------|---------------------|----|---|------|--------------|--------|--------|--------|--------|--------|
|  | 114 | Bridge End residential           | NORTH SYDNEY | Human Settlement  | Community Education | 71 | Education brochure/letter/liaise major landholders                                  | LGA  | FRNSW        | [1718] | [1819] | [1920] | [2021] | [2122] |
|  |     |                                  |              |                   | Hazard Reduction    | 72 | Undertake mechanical works and / or prescribed burning                              | LGA  | FRNSW        | [1718] | [1819] | [1920] | [2021] | [2122] |
|  |     |                                  |              |                   | Ignition Management | 76 | Restrict / close reserve from public access on days of Severe or higher fire danger | LGA  | FRNSW Police | [1718] | [1819] | [1920] | [2021] | [2122] |
|  | 115 | Avenue Road Residential          | MOSMAN       | Human Settlement  | Hazard Reduction    | 72 | Undertake mechanical works and / or prescribed burning                              | LGA  | FRNSW        | [1718] | [1819] | [1920] | [2021] | [2122] |
|  |     |                                  |              |                   | Ignition Management | 76 | Restrict / close reserve from public access on days of Severe or higher fire danger | LGA  | FRNSW Police | [1718] | [1819] | [1920] | [2021] | [2122] |
|  |     |                                  |              |                   | Community Education | 71 | Education brochure/letter/liaise major landholders                                  | LGA  | FRNSW        | [1718] | [1819] | [1920] | [2021] | [2122] |
|  | 116 | Bay Street Residential           | MOSMAN       | Human Settlement  | Community Education | 71 | Education brochure/letter/liaise major landholders                                  | LGA  | FRNSW        | [1718] | [1819] | [1920] | [2021] | [2122] |
|  |     |                                  |              |                   | Hazard Reduction    | 72 | Undertake mechanical works and / or prescribed burning                              | LGA  | FRNSW        | [1718] | [1819] | [1920] | [2021] | [2122] |
|  | 117 | Raglan Street Residential        | MOSMAN       | Human Settlement  | Community Education | 71 | Education brochure/letter/liaise major landholders                                  | LGA  | FRNSW        | [1718] | [1819] | [1920] | [2021] | [2122] |
|  |     |                                  |              |                   | Hazard Reduction    | 72 | Undertake mechanical works and / or prescribed burning                              | LGA  | FRNSW        | [1718] | [1819] | [1920] | [2021] | [2122] |
|  | 118 | Balmoral Sea Scouts Hall         | MOSMAN       | Human Settlement  | Hazard Reduction    | 72 | Undertake mechanical works and / or prescribed burning                              | LGA  | FRNSW        | [1718] | [1819] | [1920] | [2021] | [2122] |
|  | 119 | Middle Head Rd Ex-Naval Cottages | MOSMAN       | Human Settlement  | Community Education | 73 | Education brochure/letter/liaise major landholders                                  | SHFT | FRNSW        | [1718] | [1819] | [1920] | [2021] | [2122] |
|  |     |                                  |              |                   | Hazard Reduction    | 70 | Undertake mechanical works and / or prescribed burning                              | SHFT | FRNSW        | [1718] | [1819] | [1920] | [2021] | [2122] |
|  | 120 | Chowder Bay Ex-Defence Buildings | MOSMAN       | Cultural Heritage | Community Education | 73 | Education brochure/letter/liaise major landholders                                  | SHFT | FRNSW        | [1718] | [1819] | [1920] | [2021] | [2122] |
|  |     |                                  |              |                   | Hazard Reduction    | 70 | Undertake mechanical works and / or prescribed burning                              | SHFT | FRNSW        | [1718] | [1819] | [1920] | [2021] | [2122] |

**Annex A to  
Bush Fire Coordinating Committee  
Policy No. 1/2008**

|     |   |             |                   |                     |    |   |            |              |        |        |        |        |        |
|-----|---|-------------|-------------------|---------------------|----|---|------------|--------------|--------|--------|--------|--------|--------|
| 121 | Spit West Rowing Club                   | MOSMAN      | Economic          | Hazard Reduction    | 72 | Undertake mechanical works and / or prescribed burning                              | LGA        | FRNSW        | [1718] | [1819] | [1920] | [2021] | [2122] |
| 122 | Armoured and beehive casemates          | MOSMAN      | Cultural Heritage | Ignition Management | 74 | Restrict / close reserve from public access on days of Severe or higher fire danger | LGA OEHSHT | FRNSW Police | [1718] | [1819] | [1920] | [2021] | [2122] |
|     |   |             |                   | Hazard Reduction    | 75 | Trim vegetation as required   | OEHSHT     |              | [1718] | [1819] | [1920] | [2021] | [2122] |
| 123 | Outer forts                             | MOSMAN      | Cultural Heritage | Ignition Management | 74 | Restrict / close reserve from public access on days of Severe or higher fire danger | LGA OEHSHT | FRNSW Police | [1718] | [1819] | [1920] | [2021] | [2122] |
|     |   |             |                   |                     | 75 | Trim vegetation as required   | OEHSHT     |              | [1718] | [1819] | [1920] | [2021] | [2122] |
| 124 | Inner forts                             | MOSMAN      | Cultural Heritage | Ignition Management | 74 | Restrict / close reserve from public access on days of Severe or higher fire danger | LGA OEHSHT | FRNSW Police | [1718] | [1819] | [1920] | [2021] | [2122] |
|     |   |             |                   | Hazard Reduction    | 75 | Trim vegetation as required   | OEHSHT     |              | [1718] | [1819] | [1920] | [2021] | [2122] |
| 125 | Tunks Park Kiosk Toilets Change Rooms   | NORTHSYDNEY | Economic          | Hazard Reduction    | 61 | Undertake mechanical works and / or prescribed burning                              | LGA        | FRNSW        | [1718] | [1819] | [1920] | [2021] | [2122] |
| 126 | Boat repair workshop Cremorne           | NORTHSYDNEY | Economic          | Community Education | 60 | Education brochure/letter/liaise major landholders                                  | LGA        | FRNSW        | [1718] | [1819] | [1920] | [2021] | [2122] |
| 127 | Former Coal Loader Complex              | NORTHSYDNEY | Economic          | Community Education | 60 | Education brochure/letter/liaise major landholders                                  | LGA        | FRNSW        | [1718] | [1819] | [1920] | [2021] | [2122] |
|     |   |             |                   | Ignition Management | 62 | Restrict / close reserve from public access on days of Severe or higher fire danger | LGA        | FRNSW Police | [1718] | [1819] | [1920] | [2021] | [2122] |
|     |   |             |                   | Hazard Reduction    | 61 | Undertake mechanical works and / or prescribed burning                              | LGA        | FRNSW        | [1718] | [1819] | [1920] | [2021] | [2122] |
| 128 | Georges Heights Lookout Tunnels & Forts | MOSMAN      | Cultural Heritage | Ignition Management | 74 | Restrict / close reserve from public access on days of Severe or higher fire danger | LGA OEHSHT | FRNSW Police | [1718] | [1819] | [1920] | [2021] | [2122] |
|     |   |             |                   | Hazard Reduction    | 70 | Undertake mechanical works and / or prescribed burning                              | SHFT       | FRNSW        | [1718] | [1819] | [1920] | [2021] | [2122] |
| 129 | NSP - Gore Hill Oval St Leonards        | WILLOUGHBY  | Human Settlement  | Preparedness        | 77 | Conduct Annual Inspection of NSP  | LGA        |              | [1718] | [1819] | [1920] | [2021] | [2122] |
| 130 | NSP - Northbridge Plaza Carpark         | WILLOUGHBY  | Human Settlement  | Preparedness        | 77 | Conduct Annual Inspection of NSP  | LGA        |              | [1718] | [1819] | [1920] | [2021] | [2122] |

**Annex A to  
Bush Fire Coordinating Committee  
Policy No. 1/2008**

|  |     |   |            |                  |              |    |                                  |     |  |        |        |        |        |        |
|--|-----|---|------------|------------------|--------------|----|----------------------------------|-----|--|--------|--------|--------|--------|--------|
|  | 131 | NSP - Chatswood Park Willoughby         | WILLOUGHBY | Human Settlement | Preparedness | 77 | Conduct Annual Inspection of NSP | LGA |  | [1718] | [1819] | [1920] | [2021] | [2122] |
|  | 132 | NSP - Willoughby Park                   | WILLOUGHBY | Human Settlement | Preparedness | 77 | Conduct Annual Inspection of NSP | LGA |  | [1718] | [1819] | [1920] | [2021] | [2122] |
|  | 133 | NSP - Willoughby Leisure Centre Carpark | WILLOUGHBY | Human Settlement | Preparedness | 77 | Conduct Annual Inspection of NSP | LGA |  | [1718] | [1819] | [1920] | [2021] | [2122] |

This page is intentionally blank

## **Appendix 4 Map Display Areas**

- Mosman
- North Sydney
- Willoughby





| ID  | Treatment strategy  | Action   | Agencies (Support)        |
|-----|---------------------|--|---------------------------|
| T1  | Hazard Reduction    | Undertake mechanical and / or prescribed         | LGA (FRNSW)               |
| T2  | Ignition Management | Restrict / close reserve from public access      | LGA (FRNSW, Police)       |
| T3  | Hazard Reduction    | Maintain identified APZ                          | Defence                   |
| T4  | Hazard Reduction    | Maintain APZ, fuel reduced area in tank          | Defence                   |
| T5  | Community Education | Maintain Community Fire Unit as per FRNSW        | FRNSW                     |
| T6  | Ignition Management | Restrict / close reserve from public access      | LGA (FRNSW, Police)       |
| T7  | Preparedness        | Site inspection and review of Pre Incident Plan  | FRNSW                     |
| T8  | Preparedness        | Implement Defence Bush Fire Management Plan      | Defence (OE, FRNSW, SHFT) |
| T9  | Hazard Reduction    | Undertake mechanical and / or prescribed         | LGA, OE, FRNSW            |
| T10 | Hazard Reduction    | Undertake mechanical and / or prescribed         | LGA (FRNSW)               |
| T11 | Hazard Reduction    | Undertake mechanical and / or prescribed         | LGA (FRNSW)               |
| T12 | Community Education | Annual letter with key bush fire safety messages | LGA (FRNSW)               |
| T13 | Community Education | Education brochure/letter/liaise major           | SHFT (FRNSW)              |
| T14 | Hazard Reduction    | Undertake mechanical - mowing / slashing of      | SHFT                      |
| T15 | Hazard Reduction    | Undertake mechanical and / or prescribed         | LGA (FRNSW)               |
| T16 | Ignition Management | Restrict / close reserve from public access      | LGA (FRNSW, Police)       |
| T17 | Community Education | Maintain Community Fire Unit as per FRNSW        | FRNSW                     |
| T18 | Hazard Reduction    | Undertake mechanical and / or prescribed         | LGA, OE, SHFT (OE, FRNSW) |
| T19 | Hazard Reduction    | Undertake mechanical and / or prescribed         | OE, SHFT (OE, FRNSW)      |
| T20 | Hazard Reduction    | Undertake mechanical and / or prescribed         | OE, SHFT (OE, FRNSW)      |
| T21 | Hazard Reduction    | Undertake mechanical and / or prescribed         | OE, SHFT (OE, FRNSW)      |
| T22 | Hazard Reduction    | Undertake mechanical and / or prescribed         | OE, SHFT (OE, FRNSW)      |
| T23 | Hazard Reduction    | Undertake mechanical and / or prescribed         | OE, SHFT (OE, FRNSW)      |
| T24 | Hazard Reduction    | Undertake mechanical and / or prescribed         | OE, SHFT (OE, FRNSW)      |
| T25 | Hazard Reduction    | Undertake mechanical and / or prescribed         | OE, SHFT (OE, FRNSW)      |
| T26 | Hazard Reduction    | Undertake mechanical and / or prescribed         | OE, SHFT (OE, FRNSW)      |
| T27 | Hazard Reduction    | Undertake mechanical and / or prescribed         | OE, SHFT (OE, FRNSW)      |
| T28 | Hazard Reduction    | Undertake mechanical and / or prescribed         | OE, SHFT (OE, FRNSW)      |
| T29 | Hazard Reduction    | Undertake mechanical and / or prescribed         | OE, SHFT (OE, FRNSW)      |
| T30 | Hazard Reduction    | Undertake mechanical and / or prescribed         | OE, SHFT (OE, FRNSW)      |
| T31 | Hazard Reduction    | Undertake mechanical and / or prescribed         | OE, SHFT (OE, FRNSW)      |
| T32 | Hazard Reduction    | Undertake mechanical and / or prescribed         | OE, SHFT (OE, FRNSW)      |
| T33 | Hazard Reduction    | Undertake mechanical and / or prescribed         | OE, SHFT (OE, FRNSW)      |
| T34 | Hazard Reduction    | Undertake mechanical and / or prescribed         | OE, SHFT (OE, FRNSW)      |
| T35 | Hazard Reduction    | Undertake mechanical and / or prescribed         | OE, SHFT (OE, FRNSW)      |

| ID  | Treatment strategy  | Action   | Agencies (Support)            |
|-----|---------------------|--|-------------------------------|
| T36 | Hazard Reduction    | Undertake mechanical and / or prescribed         | LGA (FRNSW)                   |
| T37 | Community Education | Education brochure/letter/liaise major           | LGA (FRNSW)                   |
| T38 | Ignition Management | Restrict / close reserve from public access      | LGA, OE, SHFT (FRNSW, Police) |
| T39 | Hazard Reduction    | Maintain existing APZ                            | Defence, SHFT                 |
| T40 | Community Education | Maintain Community Fire Unit as per FRNSW        | FRNSW                         |
| T41 | Community Education | Annual letter with key bush fire safety messages | LGA (FRNSW)                   |
| T42 | Hazard Reduction    | Undertake mechanical and / or prescribed         | OE, SHFT (OE, FRNSW)          |
| T43 | Ignition Management | Restrict / close reserve from public access      | LGA (FRNSW, Police)           |
| T44 | Hazard Reduction    | Maintain existing APZ                            | SHFT                          |
| T45 | Community Education | Education brochure/letter/liaise major           | LGA (FRNSW)                   |
| T46 | Hazard Reduction    | Undertake mechanical and / or prescribed         | LGA (FRNSW)                   |
| T47 | Ignition Management | Restrict / close reserve from public access      | LGA (FRNSW, Police)           |
| T48 | Community Education | Maintain Community Fire Unit as per FRNSW        | FRNSW                         |
| T49 | Community Education | Annual letter with key bush fire safety messages | LGA (FRNSW)                   |
| T50 | Hazard Reduction    | Undertake mechanical and / or prescribed         | OE, SHFT (OE, FRNSW)          |
| T51 | Hazard Reduction    | Undertake mechanical and / or prescribed         | OE, SHFT (OE, FRNSW)          |
| T52 | Hazard Reduction    | Undertake mechanical and / or prescribed         | OE, SHFT (OE, FRNSW)          |
| T53 | Hazard Reduction    | Undertake mechanical and / or prescribed         | OE, SHFT (OE, FRNSW)          |
| T54 | Hazard Reduction    | Undertake mechanical and / or prescribed         | OE, SHFT (OE, FRNSW)          |
| T55 | Hazard Reduction    | Undertake mechanical and / or prescribed         | OE, SHFT (OE, FRNSW)          |
| T56 | Hazard Reduction    | Undertake mechanical and / or prescribed         | OE, SHFT (OE, FRNSW)          |
| T57 | Hazard Reduction    | Undertake mechanical and / or prescribed         | OE, SHFT (OE, FRNSW)          |
| T58 | Hazard Reduction    | Undertake mechanical and / or prescribed         | OE, SHFT (OE, FRNSW)          |
| T59 | Hazard Reduction    | Undertake mechanical and / or prescribed         | OE, SHFT (OE, FRNSW)          |
| T60 | Hazard Reduction    | Undertake mechanical and / or prescribed         | OE, SHFT (OE, FRNSW)          |
| T61 | Hazard Reduction    | Undertake mechanical and / or prescribed         | OE, SHFT (OE, FRNSW)          |
| T62 | Hazard Reduction    | Undertake mechanical and / or prescribed         | OE, SHFT (OE, FRNSW)          |
| T63 | Hazard Reduction    | Undertake mechanical and / or prescribed         | OE, SHFT (OE, FRNSW)          |
| T64 | Hazard Reduction    | Undertake mechanical and / or prescribed         | OE, SHFT (OE, FRNSW)          |
| T65 | Hazard Reduction    | Undertake mechanical and / or prescribed         | OE, SHFT (OE, FRNSW)          |
| T66 | Hazard Reduction    | Undertake mechanical and / or prescribed         | OE, SHFT (OE, FRNSW)          |
| T67 | Hazard Reduction    | Undertake mechanical and / or prescribed         | OE, SHFT (OE, FRNSW)          |
| T68 | Hazard Reduction    | Undertake mechanical and / or prescribed         | OE, SHFT (OE, FRNSW)          |
| T69 | Hazard Reduction    | Undertake mechanical and / or prescribed         | OE, SHFT (OE, FRNSW)          |
| T70 | Hazard Reduction    | Undertake mechanical and / or prescribed         | OE, SHFT (OE, FRNSW)          |
| T71 | Hazard Reduction    | Undertake mechanical and / or prescribed         | OE, SHFT (OE, FRNSW)          |
| T72 | Hazard Reduction    | Undertake mechanical and / or prescribed         | OE, SHFT (OE, FRNSW)          |
| T73 | Hazard Reduction    | Undertake mechanical and / or prescribed         | OE, SHFT (OE, FRNSW)          |

| Map Ref | Asset name                                  | Asset type  | Subtype        | Risk level | Priority | Treatment |
|---------|---|-------------|----------------|------------|----------|-----------|
| 1       | Parriv Park Guide Hall                      | Human       | Other          | Extreme    | 1A       | T1;2      |
| 7       | Parriv Park Scout Hall                      | Human       | Other          | Extreme    | 1B       | T6;10     |
| 9       | Taronga Zoo                                 | Economic    | Tourist and    | Extreme    | 1B       | T5;7;9    |
| 10      | HMAS Penguin                                | Economic    | Infrastructure | Extreme    | 1B       | T3;8      |
| 13      | Chowder Bay - Defence Fuel Installation     | Economic    | Infrastructure | Extreme    | 1B       | T4;8;7    |
| 18      | Imperial & Commonwealth Ave                 | Human       | Residential    | Very High  | 2A       | T17;16    |
| 19      | Water Scouts Hall Mosman                    | Human       | Other          | Very High  | 2A       | T18       |
| 20      | Iuka Road Residential                       | Human       | Residential    | Very High  | 2A       | T15;21;19 |
| 21      | Quakers Hat Park Residential                | Human       | Residential    | Very High  | 2A       | T15;18;19 |
| 22      | Parriv Park Residential                     | Human       | Residential    | Very High  | 2A       | T15;18;19 |
| 23      | Balmoral East Residential                   | Human       | Residential    | Very High  | 2A       | T15;22;20 |
| 24      | Balmoral West Residential                   | Human       | Residential    | Very High  | 2A       | T15;18;20 |
| 25      | Plunkett Road Residential                   | Human       | Residential    | Very High  | 2A       | T15;18;19 |
| 26      | Lawry Plunkett Residential                  | Human       | Residential    | Very High  | 2A       | T15;18;19 |
| 27      | Quakers Hat North Residential               | Human       | Residential    | Very High  | 2A       | T15;18;19 |
| 28      | Quakers Hat South Residential               | Human       | Residential    | Very High  | 2A       | T15;18;19 |
| 29      | Mosman Bay Water Scouts                     | Human       | Other          | Very High  | 2A       | T13       |
| 32      | HMAS Penguin Single Structure               | Economic    | Infrastructure | Very High  | 2A       | T22       |
| 44      | 8th Brigade Drill Hall / After School Child | Human       | Special Fire   | Very High  | 2A       | T15;21;22 |
| 47      | Bradleys Head Public Precinct               | Cultural    | Non            | Very High  | 2A       | T19;21;29 |
| 48      | Childcare Centre                            | Human       | Special Fire   | Very High  | 2A       | T32;33;30 |
| 49      | Lands Edge (School) / 24 hour               | Human       | Special Fire   | Very High  | 2A       | T32;31    |
| 50      | Raglan Street Residential                   | Human       | Residential    | High       | 3A       | T36;37    |
| 51      | Curragheena Road Residential                | Human       | Residential    | High       | 3A       | T36;37    |
| 52      | Curlew Camp Road Residential                | Human       | Residential    | High       | 3A       | T36;37    |
| 53      | Governor's residence Middle Head            | Human       | Residential    | High       | 3A       | T38;30    |
| 55      | Sergeant majors quarters (Rangers)          | Human       | Other          | High       | 3A       | T38;30    |
| 56      | Barracks (Admin office)                     | Human       | Other          | High       | 3A       | T30;38    |
| 57      | Radio tower - Police                        | Economic    | Infrastructure | High       | 3A       | T35;38    |
| 58      | Soldiers Institute                          | Human       | Other          | High       | 3A       | T30;38    |
| 59      | Tool shed                                   | Human       | Other          | High       | 3A       | T30;38    |
| 60      | Former guardhouse - now store and           | Human       | Other          | High       | 3A       | T30;38    |
| 61      | Materials / equipment storage yard          | Economic    | Infrastructure | High       | 3A       | T30;38    |
| 62      | Atoll Hall                                  | Economic    | Commercial     | High       | 3A       | T30;38    |
| 63      | Morella Road Residential                    | Human       | Residential    | High       | 3A       | (1)       |
| 64      | Morella Road 2 Residential                  | Human       | Residential    | High       | 3A       | (2)       |
| 65      | Bradley's Residential                       | Human       | Residential    | High       | 3A       | T36;37;38 |
| 66      | Rawson Park Tennis Centre                   | Economic    | Tourist and    | High       | 3A       | T36;37    |
| 67      | Marino & Mosman Rowing Club                 | Economic    | Tourist and    | High       | 3A       | T43;36;37 |
| 68      | Middle Head to Balmoral Walking Track       | Economic    | Infrastructure | High       | 3A       | T40;33    |
| 69      | Burnt Orange Cafe                           | Economic    | Tourist and    | High       | 3A       | T42;45    |
| 81      | Sirius and Rickard Roads Residential        | Human       | Residential    | Medium     | 4        | T58;59;61 |
| 82      | Royalist and Boyle Residential              | Human       | Residential    | Medium     | 4        | T61;58;59 |
| 83      | Millet Road Residential                     | Human       | Residential    | Medium     | 4        | T58;61    |
| 84      | Dominion Crescent Residential               | Human       | Residential    | Medium     | 4        | T62;63    |
| 85      | Camouflaged Fuel Tanks 3, 4 & 5             | Cultural    | Other          | Medium     | 4        | T63;62    |
| 86      | Poppies Child Care Centre                   | Human       | Special Fire   | Medium     | 4        | T64;57    |
| 87      | Bay Street 2 Residential                    | Human       | Residential    | Medium     | 4        | T57;58    |
| 88      | Carrington Residential                      | Human       | Residential    | Medium     | 4        | T57;58    |
| 89      | Cross Street Residential                    | Human       | Residential    | Medium     | 4        | (3)       |
| 92      | Burnt Orange Carpark                        | Economic    | Infrastructure | Medium     | 4        | T31       |
| 93      | Former ASOPA & 10 Terminal Buildings        | Human       | Other          | Medium     | 4        | T38;62;63 |
| 94      | Endangered Flora HMAS Penguin               | Environment | Endangered     | Medium     | 4        | T65       |
| 103     | Middle Head Road Residential                | Human       | Residential    | Medium     | 4        | T63;31;62 |
| 104     | Headland Park Artist Precinct               | Economic    | Commercial     | Medium     | 4        | T31;62;38 |
| 105     | Gun shot alley                              | Economic    | Commercial     | Medium     | 4        | T31;38;62 |
| 106     | Georges Heights SHFT Buildings              | Economic    | Commercial     | Medium     | 4        | (4)       |
| 107     | Gunnery Barracks Tea Room                   | Economic    | Commercial     | Medium     | 4        | T31;38;63 |
| 112     | Park Avenue Residential                     | Human       | Residential    | Low        | NA       | T68;69;71 |
| 115     | Avenue Road Residential                     | Human       | Residential    | Low        | NA       | T69;73;68 |
| 116     | Bay Street Residential                      | Human       | Residential    | Low        | NA       | T68;69    |
| 117     | Raglan Street Residential                   | Human       | Residential    | Low        | NA       | T68;69    |
| 118     | Balmoral Sea Scouts Hall                    | Human       | Other          | Low        | NA       | T69       |
| 119     | Middle Head Rd Ex-Naval Cottages            | Human       | Residential    | Low        | NA       | T70;67    |
| 120     | Chowder Bay Ex-Defence Buildings            | Cultural    | Non            | Low        | NA       | T70;67    |
| 121     | Sport West Rowing Club                      | Economic    | Tourist and    | Low        | NA       | T69       |
| 122     | Armoured and beehive casemates              | Cultural    | Non            | Low        | NA       | T71;72    |
| 123     | Outer forts                                 | Cultural    | Non            | Low        | NA       | T71;72    |
| 124     | Inner forts                                 | Cultural    | Non            | Low        | NA       | T71;72    |
| 128     | Georges Heights Lookout Tunnels &           | Cultural    | Non            | Low        | NA       | T71;67    |

(1):T34;36;37;41  
(2):T34;36;37;41  
(3):T57;58;38;60  
(4):T31;38;63;62

# Mosman, North Sydney, Willoughby BFMC Bush Fire Risk Management Plan 2017

MOSMAN - Map Display Area

Map 1 of 3

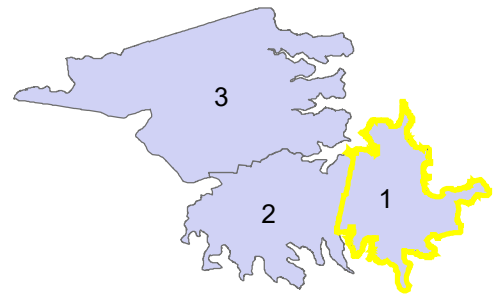
This Bush Fire Risk Management Plan (BFRMP) has been prepared by the Mosman, North Sydney, Willoughby Bush Fire Management Committee (BFMC) pursuant to section 52 of the Rural Fires Act 1997.

The aim of this BFRMP is to reduce the adverse impact of bush fires on life, property and the environment.

The objectives of this BFRMP are to:

- reduce the number of human-induced bush fire ignitions that cause damage to life, property or the environment;
- manage fuel to reduce the spread and intensity of bush fires while minimising environmental/ecological impacts;
- reduce the community's vulnerability to bush fires by improving its preparedness; and
- effectively contain fires with a potential to cause damage to life, property and the environment.

This map forms part of the BFRMP for the Mosman, North Sydney, Willoughby BFMC, covering the local government area(s) of . It should be viewed in conjunction with the accompanying BFRMP document which provides further details on the BFMC area, the assets assessed and the risk assessment process used.



**Review**  
Under the Rural Fires Act 1997 this plan must be reviewed and updated within each successive five year period following the constitution of the BFMC. The Mosman, North Sydney, Willoughby BFMC will also review this plan as necessary. This may be triggered by a range of circumstances, including but not limited to:

- changes to the BFMC area, organisational responsibilities or legislation;
- changes to the bush fire risk in the area; or
- following a major fire event.

**Assets**  
This BFRMP identifies the assets that are considered by the Mosman, North Sydney, Willoughby BFMC and community to be at risk from bush fires, assesses the bush fire risk to each asset and assigns treatments designed to mitigate the risk. Assets in the BFMC area identified as requiring treatments are listed in the assets table. Other assets within the BFMC area that were assessed as not requiring treatments within the life of this plan are listed in the appendix to the BFRMP document. The Map Ref number "NA" denotes non-spatial assets.

**Treatments**  
Specific treatments assigned to assets in the Mosman, North Sydney, Willoughby area are listed in the treatments table and linked to the assets which they are designed to protect. Standard BFMC wide treatments (i.e. not linked to a specific asset) which occur on an ongoing basis within the BFMC area are:

- reviewing the bush fire prone land map;
- ensuring developments in the bush fire prone land comply with Planning for Bush Fire Protection;
- using the Local Environment Plan's (LEPs) to control development in areas with a bush fire risk;
- varying the standard bush fire danger period as required;
- requiring permits during bush fire danger periods
- prosecution of arsonists/offenders
- investigation of bush fire cause;
- normal fire suppression activities;
- assessing and managing compliance with strategic fire-fighting resource allocation management systems;
- preparation of a S&S Operations Coordination Plan;

Note on LNZ: All areas not specifically mapped as an APZ, SFAZ or FEZ are considered as LNZ for this risk management plan. For areas identified by an LNZ polygon on the map, please refer to the BFRMP document for the specific land management objectives.

| Zone                                 | Purpose   | Suppression  | Zone  |
|--------------------------------------|---|--|---|
| <b>Asset Protection Zone</b>         | To protect human life, property and highly valued public assets and values.   | To enable the safe use of <b>Direct Attack</b> suppression strategies within the zone. To minimise bush fire impacts on undefended assets.   | As per RFS document Standards for Asset Protection Zones.   |
| <b>Strategic Fire Advantage Zone</b> | To provide strategic areas of fire protection advantage which will reduce the speed and intensity of bush fires, and reduce the potential for spot fire development. To aid containment of wildfires to existing management boundaries. | To improve the likelihood and safe use of <b>Parallel Attack</b> suppression strategies within the zone. <b>Indirect Attack</b> (back burning) in high to very high fire weather conditions within the zone. To reduce the likelihood of: Crown fire development within the zone; and/or Spot fire ignition potential from the zone. | Zone width related to suppression objectives and dependant upon: <ul style="list-style-type: none"><li>- Topography</li><li>- Aspect</li><li>- Spotting propensity</li><li>- Location of adjacent fire breaks</li><li>- Mosaic pattern of treatment</li><li>- Assess Overall Fuel Hazard (OFH) once vegetation communities reach minimum fire thresholds within this plan.</li><li>- Management practices should aim to achieve mosaic fuel reduction patterns so that the majority of the SFAZ has an OFH of less than high.</li></ul> |
| <b>Land Management Zone</b>          | To meet relevant land management objectives in area where APZs or SFAZs are not appropriate.  | As per the land management and fire protection objectives of the responsible land management agency. To reduce the likelihood of spread of fires. To undertake mosaic burning.   | As appropriate to achieve land management, e.g. heritage and/or fire protection e.g. broad scale mosaic burning objectives.   |
| <b>Fire Exclusion Zone</b>           | To exclude bush fires.  | N/A  | Variable dependant on size of fire sensitive area requiring protection.   |

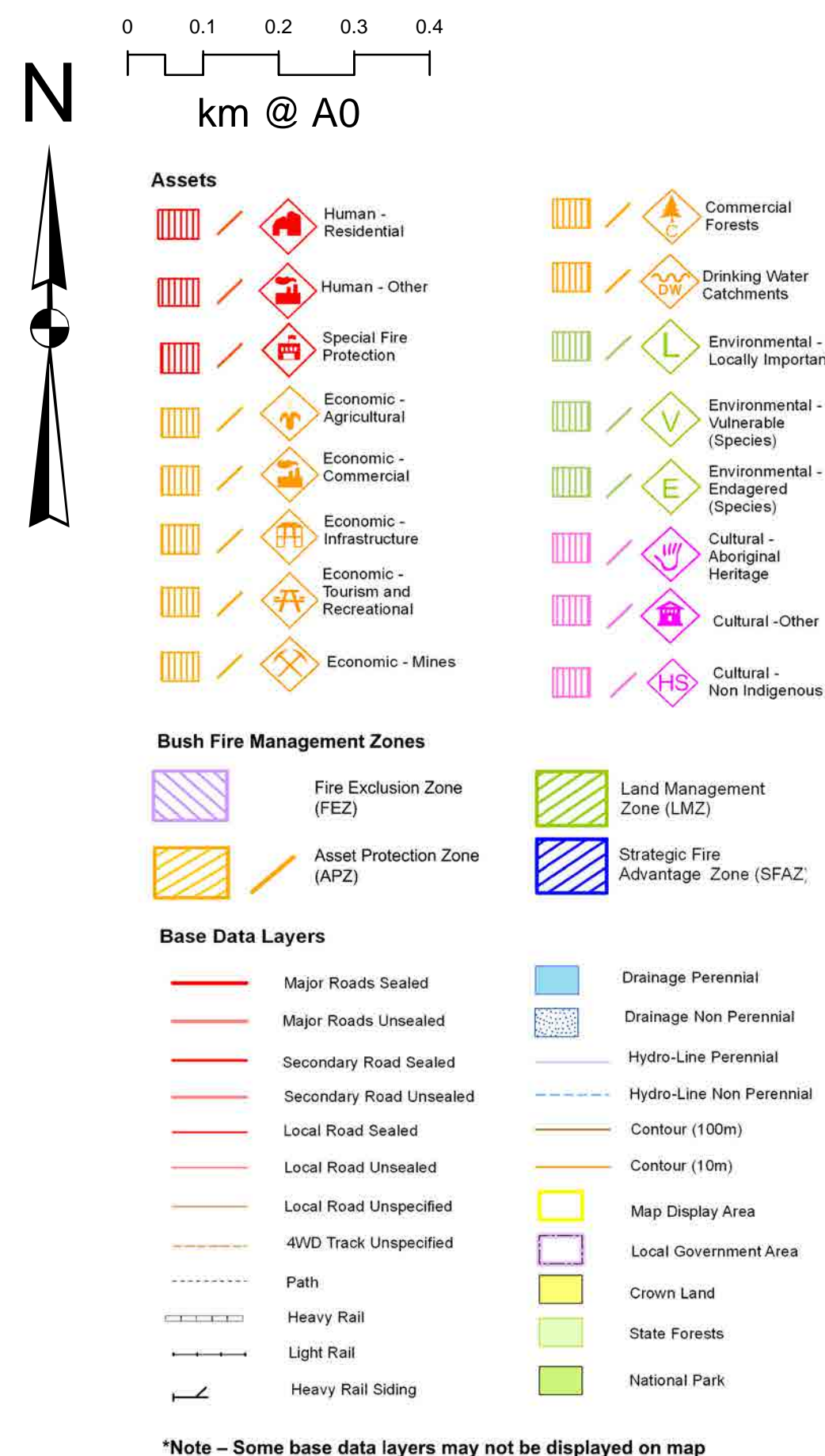
**Disclaimer**  
The Mosman, North Sydney, Willoughby BFMC makes every effort to ensure the quality of the information available on this map. Before relying on the information on this map, users should carefully evaluate its accuracy, completeness and relevance for their purposes, and should obtain any appropriate professional advice relevant to their particular circumstances.

The Mosman, North Sydney, Willoughby BFMC can not guarantee and assumes no legal liability or responsibility for the accuracy, currency or completeness of the information. Copyright: Mosman, North Sydney, Willoughby BFMC 2017.

Authorized by ..... of Mosman, North Sydney, Willoughby BFMC.  
Date created: Friday, 24 November 2017

BFRMP version 2.1.23.0





| Treatments |                     |  |                      |
|------------|---------------------|--|----------------------|
| ID         | Treatment strategy  | Action   | Agencies (Support)   |
| T14        | Community Education | Education brochure/letter/liaise major         | LGA (FRNSW)          |
| T18        | Hazard Reduction    | Undertake mechanical and / or prescribed       | LGA (FRNSW)          |
| T39        | Preparedness        | Implement Defence Bush Fire Management Plan    | Defence (LGA, FRNSW) |
| T54        | Community Education | Education brochure/letter/liaise major         | LGA (FRNSW)          |
| T55        | Hazard Reduction    | Undertake mechanical works and / or prescribed | LGA (FRNSW)          |
| T56        | Ignition Management | Restrict / close reserve from public access    | LGA (FRNSW, Police)  |
| T57        | Community Education | Education brochure/letter/liaise major         | LGA (FRNSW)          |
| T58        | Hazard Reduction    | Undertake mechanical and / or prescribed       | LGA (FRNSW)          |
| T59        | Ignition Management | Restrict / close reserve from public access    | LGA (FRNSW, Police)  |
| T68        | Community Education | Education brochure/letter/liaise major         | LGA (FRNSW)          |
| T69        | Hazard Reduction    | Undertake mechanical and / or prescribed       | LGA (FRNSW)          |
| T73        | Ignition Management | Restrict / close reserve from public access    | LGA (FRNSW, Police)  |

| Assets  |                                       |             |                |            |          |           |
|---------|---------------------------------------|-------------|----------------|------------|----------|-----------|
| Map Ref | Asset name                            | Asset type  | Subtype        | Risk level | Priority | Treatment |
| 37      | Tunks Park West                       | Human       | Residential    | Very High  | 2A       | T14:18    |
| 54      | Endangered Flora HMAS Waterhen        | Environment | Vulnerable     | High       | 3A       | T39       |
| 77      | Tunks Park East Residential           | Human       | Residential    | High       | 3C       | T54:55    |
| 78      | Milray Ave Residential                | Human       | Residential    | High       | 3C       | T54:55:56 |
| 79      | HMAS Waterhen                         | Economic    | Infrastructure | High       | 3C       | T54:39    |
| 80      | Balls Head Quarantine Station         | Human       | Residential    | Medium     | 4        | T57:59:58 |
| 90      | Folley Point Residential              | Human       | Residential    | Medium     | 4        | T57       |
| 91      | Aqueduct Tunks Park East              | Economic    | Infrastructure | Medium     | 4        | T58       |
| 95      | Primrose Residential                  | Human       | Residential    | Medium     | 4        | T57:58    |
| 96      | Brightmore Residential                | Human       | Residential    | Medium     | 4        | T57:58    |
| 97      | Wonga Rd Residential                  | Human       | Residential    | Medium     | 4        | T57:58    |
| 98      | Rotary Mens Shed                      | Economic    | Tourist and    | Medium     | 4        | T57:58    |
| 99      | Primrose Community Centre / Tennis    | Economic    | Tourist and    | Medium     | 4        | T58       |
| 100     | Brightmore Residential 2              | Human       | Residential    | Medium     | 4        | T57       |
| 101     | NSW Fisheries Complex                 | Economic    | Infrastructure | Medium     | 4        | T57:58:59 |
| 110     | Woolleys Boat Builders                | Economic    | Commercial     | Low        | NA       | T68:69:73 |
| 111     | Tyron Ave Residential                 | Human       | Residential    | Low        | NA       | T68:69:73 |
| 113     | Shirley Road Residential              | Human       | Residential    | Low        | NA       | T59:57:58 |
| 114     | Bridge End Residential                | Human       | Residential    | Low        | NA       | T68:69:73 |
| 125     | Tunks Park Kiosk Toilets Change Rooms | Economic    | Infrastructure | Low        | NA       | T58       |
| 126     | Boat repair workshop Cremorne         | Economic    | Commercial     | Low        | NA       | T57       |
| 128     | Former Coal Loader Complex            | Economic    | Tourist and    | Low        | NA       | T57:59:58 |

# Mosman, North Sydney, Willoughby BFM Bush Fire Risk Management Plan 2017

### NORTH SYDNEY - Map Display Area

## Map 2 of 3

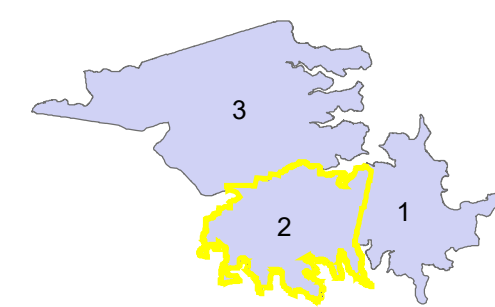
This Bush Fire Risk Management Plan (BFRMP) has been prepared by the Mosman, North Sydney, Willoughby Bush Fire Management Committee (BFMC) pursuant to section 52 of the *Rural Fires Act 1997*.

The **aim** of this BFRMP is to reduce the adverse impact of bush fires on life, property and the environment.

The **objectives** of this BFRMP are to:

- reduce the number of human-induced bush fire ignitions that cause damage to life, property or the environment;
- manage fuel to reduce the spread and intensity of bush fires while minimising environmental/ecological impacts;
- reduce the community's vulnerability to bush fires by improving its preparedness; and
- effectively contain fires with a potential to cause damage to life, property and the environment.

This map forms part of the BFRMP for the Mosman, North Sydney, Willoughby BFC, covering the local government area(s) of . It should be viewed in conjunction with the accompanying BFRMP document which provides further details on the BFC area, the assets assessed and the risk assessment process used.



## Review

**Review**  
Under the *Rural Fires Act 1997* this plan must be reviewed and updated within each successive five year period following the constitution of the BFMC. The Mosman, North Sydney, Willoughby BFMC will also review this plan as necessary. This may be triggered by a range of circumstances, including but not limited to:

- changes to the BFMC area, organisational responsibilities or legislation;
- changes to the bush fire risk in the area; or
- following a major fire event.

## Assets

**Assets**  
This BFRMP identifies the assets that are considered by the Mosman, North Sydney, Willoughby BFMFC and community to be at risk from bush fires, assesses the bush fire risk to each asset and assigns treatments designed to mitigate the risk. Assets in the BFMFC area identified as requiring treatments are listed in the assets table. Other assets within the BFMFC area that were assessed as not requiring treatments within the life of this plan are listed in the appendix to the BFRMP document. The Map Ref number 'NA' denotes non-spatial assets.

## Treatments

- fire treatments assigned to assets in the Mosman, North Sydney, Willoughby area are listed in the treatments table and linked to the assets which they are designed to protect. Standard BFMC wide treatments (i.e. not linked to a specific asset) which occur on an ongoing basis from the BFMC area are:
  - reviewing the bush fire prone land map;
  - ensuring developments in the bush fire prone land comply with Planning for Bush Fire Risk;
  - using the Local Environment Plan's (LEP) to control development in areas with a bush fire risk;
  - varying the standard bush fire danger period as required;
  - requiring permits during bush fire danger periods
  - prosecution of arsonists/offenders
  - investigation of bush fire causes;
  - normal fire suppression activities;
  - assessing and managing compliance with strategic fire-fighting resource allocation management systems;
  - preparation of a S&S Operations Coordination Plan;

Note on LMZ: All areas not specifically mapped as an APZ, SFAZ or FEZ are considered as LMZ for this risk management plan. For areas identified by an LMZ polygon on the map, please refer to the BFRMP document for the specific land management objectives.

| Zone                                 | Purpose  | Suppression  | Zone  |
|--------------------------------------|--|--|---|
| <b>Asset Protection Zone</b>         | To protect human life, property and highly valued public assets and values.  | To enable the safe use of Direct Attack suppression strategies within the zone.<br>To minimise bush fire impacts on undefended assets.   | As per RFS zone 1 and 2, and underpins <i>Asset Protection Zones</i> .  |
| <b>Strategic Fire Advantage Zone</b> | To provide strategic areas of fire protection advantage which will reduce the speed and intensity of bush fires, and reduce the potential for spot fire development.<br>To aid containment of wildfires to existing management boundaries. | To improve the likelihood and safe use of <b>Parallel Attack</b> suppression strategies within the zone.<br>and/or<br><b>Indirect Attack</b> (back burning) in high to very high fire weather conditions within the zone.<br><br>To reduce the likelihood of: Crown fire development within the zone.<br>and/or<br>Spot fire ignition potential from the zone. | Zone width related to suppression objectives and dependent upon:<br>- Topography<br>- Aspect<br>- Spotting propensity<br>- Location of adjacent fire breaks<br>- Mosaic pattern of treatment<br>Hazard Assessment Fuel Hazard (OFH) once vegetation conditions reach minimum fire thresholds within this zone<br>Management practices should aim to achieve mosaic fuel reduction patterns so that the majority of the SFAZ has an OFH of less than high. |
| <b>Land Management Zone</b>          | To meet relevant land management and fire objectives in areas where APZs or SFAZs are not appropriate.   | As per the land management and fire objectives of the responsible land management authority.<br>To reduce the likelihood of spread of fires.<br>To undertake mosaic burning.   | As appropriate to achieve land management, e.g. heritage and/or fire protection e.g. broad scale strategic burning objectives.  |
| <b>Fire Exclusion Zone</b>           | To exclude bush fires.   | N/A  | Variable dependent on size of fire sensitive areas requiring protection   |

## Disclaimer

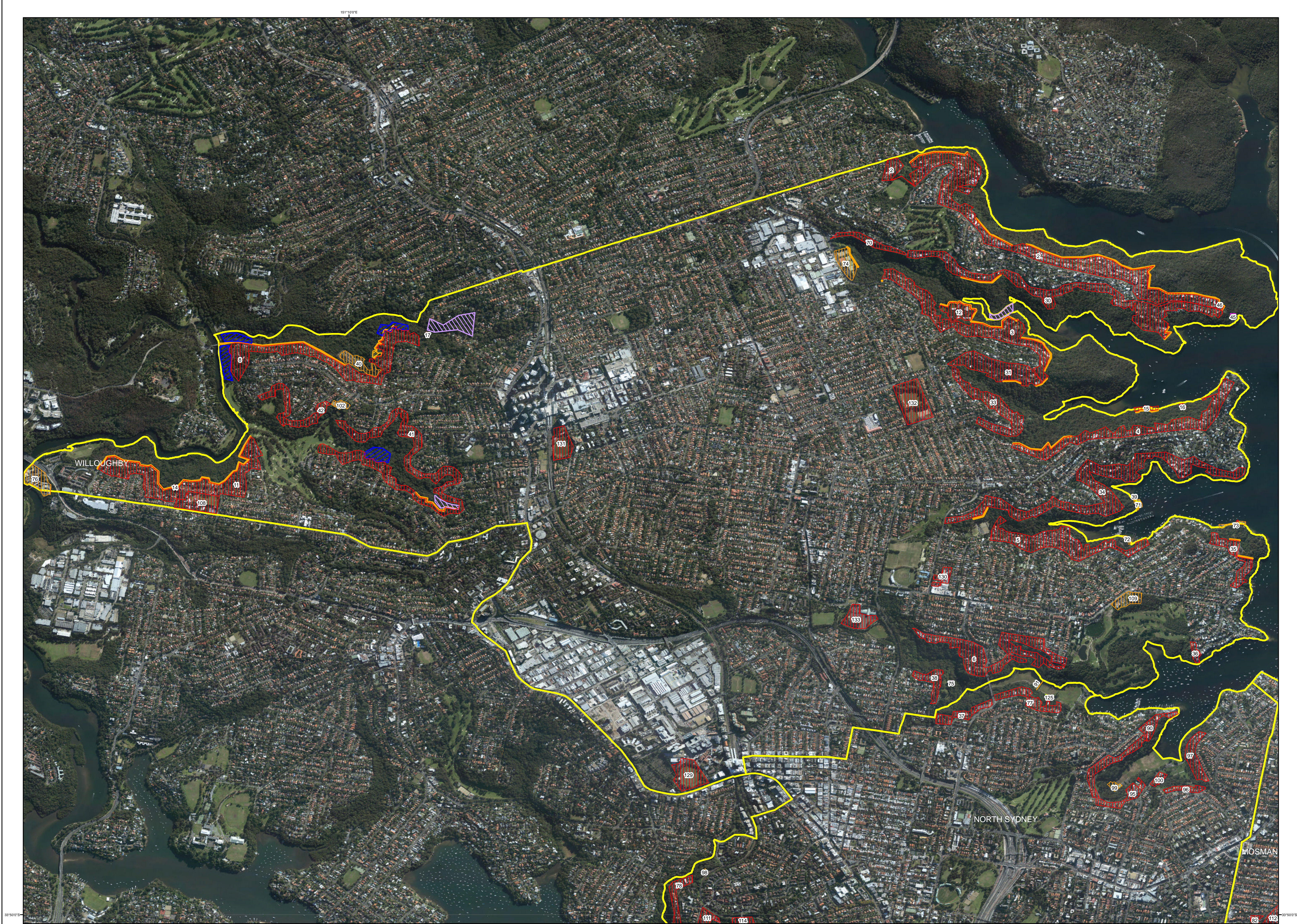
**Disclaimer**  
The Mosman, North Sydney, Willoughby BFMG makes every effort to ensure the quality of the information available on this map. Before relying on the information on this map, users should carefully evaluate its accuracy, completeness and relevance for their purposes, and should obtain any appropriate professional advice relevant to their particular circumstances.

The Mosman, North Sydney, Willoughby BFMC can not guarantee and assumes no legal liability or responsibility for the accuracy, currency or completeness of the information. Copyright: Mosman, North Sydney, Willoughby BFMC 2017.

Authorized by ..... of Mosman, North Sydney  
Willoughby BFMCo.  
Date created: Friday, 24 November 2017

BFRR version 2.1.23.0





| Treatments |                     |  |                      |
|------------|---------------------|--|----------------------|
| ID         | Treatment strategy  | Action                                       | Agencies (Support)   |
| T10        | Hazard Reduction    | Undertake mechanical and / or prescribed     | LGA (FRNSW)          |
| T11        | Hazard Reduction    | Maintain established APZ's                   | LGA                  |
| T12        | Community Education | Undertake Annual Inspection and review ePIP  | FRNSW (LGA)          |
| T20        | Community Education | Maintain Community Fire Unit as per FRNSW    | FRNSW                |
| T23        | Hazard Reduction    | Maintain reduced fue loads around perimeter  | LGA                  |
| T24        | Preparedness        | Maintain agency maintenance / inspection     | Ausgrid              |
| T25        | Hazard Reduction    | Undertake mechanical and / or prescribed     | LGA, Ausgrid (FRNSW) |
| T26        | Hazard Reduction    | Maintain established APZ's                   | LGA                  |
| T27        | Hazard Reduction    | Undertake Mechanical and or Prescribed       | LGA (FRNSW)          |
| T28        | Preparedness        | Conduct annual inspection of fuel loads      | LGA                  |
| T44        | Preparedness        | Maintain APZ - Annual maintenance inspection | LGA, Private         |
| T46        | Hazard Reduction    | Maintain APZ - Old Pacific Power Site        | LGA, Private         |
| T47        | Hazard Reduction    | Maintain SFAZ - Magdala Road                 | OEH                  |
| T48        | Hazard Reduction    | Maintain LMZ - Pumphouse Reserve             | LGA                  |
| T49        | Hazard Reduction    | Maintain SFAZ - Pumphouse Reserve            | LGA (FRNSW)          |
| T50        | Hazard Reduction    | Maintain fuel reduced road edge              | LGA                  |
| T51        | Hazard Reduction    | Undertake Mechanical and or Prescribed       | LGA (FRNSW)          |
| T52        | Hazard Reduction    | Maintain existing APZ                        | LGA                  |
| T53        | Hazard Reduction    | Maintain reduced fue loads around perimeter  | LGA                  |
| T58        | Hazard Reduction    | Undertake mechanical and / or prescribed     | LGA (FRNSW)          |
| T66        | Preparedness        | Conduct annual inspection of fuel loads      | LGA                  |
| T74        | Hazard Reduction    | Maintain fuels in accordancewith Guidelines  | LGA                  |

| Assets  |  |            |                |            |          |           |
|---------|--|------------|----------------|------------|----------|-----------|
| Map Ref | Asset name                               | Asset type | Subtype        | Risk level | Priority | Treatment |
| 2       | Castle Cove North Escarpment             | Human      | Residential    | Extreme    | 1B       | T10;11    |
| 3       | Middle Cove North Escarpment             | Human      | Residential    | Extreme    | 1B       | T10;11    |
| 4       | Castlecrag North Escarpment              | Human      | Residential    | Extreme    | 1B       | T10;11    |
| 5       | Northbridge North Escarpment             | Human      | Residential    | Extreme    | 1B       | T10       |
| 6       | Northbridge Southern Escarpment 1        | Human      | Residential    | Extreme    | 1B       | T10       |
| 8       | Chatswood West 1                         | Human      | Residential    | Extreme    | 1B       | T10;11    |
| 11      | Chatswood West 2                         | Human      | Residential    | Extreme    | 1B       | T10;11    |
| 12      | Gleneason High School                    | Human      | Special Fire   | Extreme    | 1B       | T12;11    |
| 14      | Mowbray Scout Hall                       | Human      | Special Fire   | Extreme    | 1B       | T10;11    |
| 15      | Foreshore properties below Edinburgh     | Human      | Residential    | Extreme    | 1B       | T10;11    |
| 16      | Foreshore "Artist Cottage" Edinburgh     | Human      | Other          | Other      | 1B       | T10       |
| 17      | Blue Gum Scout Hall                      | Human      | Special Fire   | Extreme    | 1B       | T10       |
| 30      | Castle Cove Southern Escarpment          | Human      | Residential    | Very High  | 2A       | T20;26;27 |
| 31      | Middle Cove Southern Escarpment          | Human      | Residential    | Very High  | 2A       | T26;27    |
| 33      | Castlecrag North Escarpment 1            | Human      | Residential    | Very High  | 2A       | T27       |
| 34      | Castlecrag Southern Escarpment           | Human      | Residential    | Very High  | 2A       | T26;27    |
| 35      | Northbridge North/East Escerpment        | Human      | Residential    | Very High  | 2A       | T26;27    |
| 36      | Northbridge Southern Escarpment          | Human      | Residential    | Very High  | 2A       | T27       |
| 38      | Naremburn North Escarpment               | Human      | Residential    | Very High  | 2A       | T27       |
| 39      | Castlecrag Sea Scout Hall                | Human      | Special Fire   | Very High  | 2A       | T27;28    |
| 40      | Church complex development               | Economic   | Commercial     | Very High  | 2A       | T27       |
| 41      | Chatswood West 3                         | Human      | Residential    | Very High  | 2A       | T27;26    |
| 42      | Chatswood West 3                         | Human      | Residential    | Very High  | 2A       | T27       |
| 43      | Northbridge Sea Scout Hall               | Human      | Special Fire   | Very High  | 2A       | T27;28    |
| 45      | Old Dance Hall Ruins                     | Cultural   | Non            | Very High  | 2A       | T23       |
| 46      | Ausgrid Electrical Sub Station           | Economic   | Infrastructure | Very High  | 2A       | T24;25    |
| 70      | Castle Cove Southern Escarpment 1        | Human      | Residential    | High       | 3A       | T50       |
| 71      | Castlecrag Boatshed/Marina               | Economic   | Commercial     | High       | 3A       | T51       |
| 72      | Northbridge Swimming Baths               | Economic   | Tourist and    | High       | 3A       | T51       |
| 73      | Northbridge Sailing Club and             | Economic   | Commercial     | High       | 3A       | T51       |
| 74      | Tennis Valley                            | Economic   | Tourist and    | High       | 3A       | T51;52    |
| 75      | Fatty Dawson Ruins                       | Cultural   | Non            | High       | 3A       | T53       |
| 76      | Penfords Factory                         | Economic   | Commercial     | High       | 3A       | (1)       |
| 102     | Chatswood West Tennis Club               | Economic   | Tourist and    | Medium     | 4        | T66       |
| 108     | Mowbray Primary School                   | Human      | Special Fire   | Medium     | 4        | T66       |
| 109     | Northbridge park sport facilities & mens | Economic   | Tourist and    | Medium     | 4        | T58       |
| 129     | NSP - Gore Hill Oval St Leonards         | Human      | Other          | Low        | NA       | T74       |
| 130     | NSP - Northbridge Plaza Carpark          | Human      | Other          | Low        | NA       | T74       |
| 131     | NSP - Chatswood Park Willoughby          | Human      | Other          | Low        | NA       | T74       |
| 132     | NSP - Willoughby Park                    | Human      | Other          | Low        | NA       | T74       |
| 133     | NSP - Willoughby Leisure Centre          | Human      | Other          | Low        | NA       | T74       |

(1):T49;48;47;44;46

# Mosman, North Sydney, Willoughby BFMC Bush Fire Risk Management Plan 2017

## WILLOUGHBY - Map Display Area

### Map 3 of 3

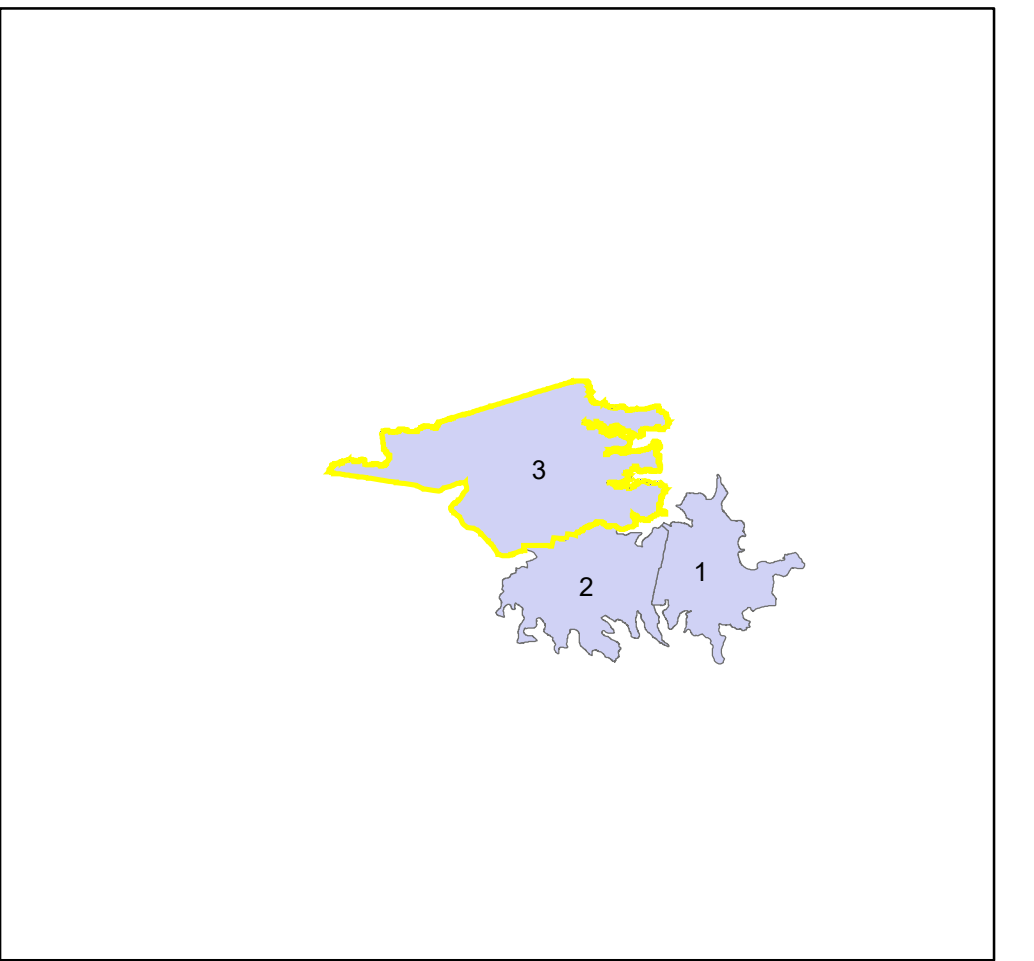
This Bush Fire Risk Management Plan (BFRMP) has been prepared by the Mosman, North Sydney, Willoughby Bush Fire Management Committee (BFMC) pursuant to section 52 of the Rural Fires Act 1997.

The aim of this BFRMP is to reduce the adverse impact of bush fires on life, property and the environment.

The objectives of this BFRMP are to:

- reduce the number of human-induced bush fire ignitions that cause damage to life, property or the environment;
- manage fuel to reduce the spread and intensity of bush fires while minimising environmental/ecological impacts;
- reduce the community's vulnerability to bush fires by improving its preparedness; and
- effectively contain fires with a potential to cause damage to life, property and the environment.

This map forms part of the BFRMP for the Mosman, North Sydney, Willoughby BFMC, covering the local government area(s) of . It should be viewed in conjunction with the accompanying BFRMP document which provides further details on the BFMC area, the assets assessed and the risk assessment process used.



**Review**  
Under the Rural Fires Act 1997 this plan must be reviewed and updated within each successive five year period following the constitution of the BFMC. The Mosman, North Sydney, Willoughby BFMC will also review this plan as necessary. This may be triggered by a range of circumstances, including but not limited to:

- changes to the BFMC area, organisational responsibilities or legislation;
- changes to the bush fire risk in the area; or
- following a major fire event.

**Assets**  
This BFRMP identifies the assets that are considered by the Mosman, North Sydney, Willoughby BFMC and community to be at risk from bush fires, assesses the bush fire risk to each asset and assigns treatments designed to mitigate the risk. Assets in the BFMC area identified as requiring treatments are listed in the assets table. Other assets within the BFMC area that were assessed as not requiring treatments within the life of this plan are listed in the appendix to the BFRMP document. The Map Ref number "NA" denotes non-spatial assets.

**Treatments**  
Specific treatments assigned to assets in the Mosman, North Sydney, Willoughby area are listed in the treatments table and linked to the assets which they are designed to protect. Standard BFMC wide treatments (i.e. not linked to a specific asset) which occur on an ongoing basis within the BFMC area are:

- reviewing the bush fire prone land map;
- ensuring developments in the bush fire prone land comply with Planning for Bush Fire Protection;
- using the Local Environment Plan's (LEPs) to control development in areas with a bush fire risk;
- varying the standard bush fire danger period as required;
- requiring permits during bush fire danger periods
- prosecution of arsonists/offenders
- investigation of bush fire cause;
- normal fire suppression activities;
- assessing and managing compliance with strategic fire-fighting resource allocation management systems;
- preparation of a S&2 Operations Coordination Plan;

Note on LMZ: All areas not specifically mapped as an APZ, SFAZ or FEZ are considered as LMZ for this risk management plan. For areas identified by an LMZ polygon on the map, please refer to the BFRMP document for the specific land management objectives.

| Zone                                 | Purpose   | Suppression  | Zone  |
|--------------------------------------|---|--|---|
| <b>Asset Protection Zone</b>         | To protect human life, property and highly valued public assets and values.   | To enable the safe use of <b>Direct Attack</b> suppression strategies within the zone. To minimise bush fire impacts on undefended assets.   | As per RFS document <i>Standards for Asset Protection Zones</i> .   |
| <b>Strategic Fire Advantage Zone</b> | To provide strategic areas of fire protection advantage which will reduce the speed and intensity of bush fires, and reduce the potential for spot fire development. To aid containment of wildfires to existing management boundaries. | To improve the likelihood and safe use of <b>Parallel Attack</b> suppression strategies within the zone. <b>Indirect Attack</b> (back burning) in high to very high fire weather conditions within the zone. To reduce the likelihood of: Crown fire development within the zone. and/or Spot fire ignition potential from the zone. | Zone width related to suppression objectives and dependant upon:<br>- Topography<br>- Aspect<br>- Spotting propensity<br>- Location of adjacent fire breaks<br>- Mosaic pattern of treatment<br>Assess Overall Fuel Hazard (OFH) once vegetation communities reach minimum fire thresholds within this plan. Management practices should aim to achieve mosaic fuel reduction patterns so that the majority of the SFAZ has an OFH of less than high. |
| <b>Land Management Zone</b>          | To meet relevant land management objectives in area where APZs or SFAZs are not appropriate.  | As per the land management and fire protection objectives of the responsible land management agency. To reduce the likelihood of spread of fires. To undertake mosaic burning.   | As appropriate to achieve land management, e.g. heritage and/or fire protection e.g. broad scale mosaic burning objectives.   |
| <b>Fire Exclusion Zone</b>           | To exclude bush fires.  | N/A  | Variable dependant on size of fire sensitive area requiring protection.   |

**Disclaimer**  
The Mosman, North Sydney, Willoughby BFMC makes every effort to ensure the quality of the information available on this map. Before relying on the information on this map, users should carefully evaluate its accuracy, completeness and relevance for their purposes, and should obtain any appropriate professional advice relevant to their particular circumstances.

The Mosman, North Sydney, Willoughby BFMC can not guarantee and assumes no legal liability or responsibility for the accuracy, currency or completeness of the information. Copyright: Mosman, North Sydney, Willoughby BFMC 2017.

Authorized by ..... of Mosman, North Sydney, Willoughby BFMC.

Date created: Friday, 24 November 2017

BFRR version 2.1.23.0